

SPC0612SQFTLEDXL

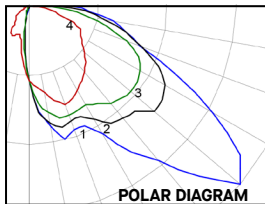
6" SQUARE FORWARD THROW

6" Square LED XL series cylinder with forward throw optic (peak candela at 50° above nadir.) May be pendant or surface mounted. Ideal for wall, stairwell, and pathway illumination.

LUMENS / WATTAGE DATA

PART NUMBER	SOURCE LUMENS	DELIVERED LUMENS ²	SYSTEM WATTS	LPW
SPC0612SQFTLEDXL 10L	1000	920	15	62
SPC0612SQFTLEDXL 13L	1300	1309	22	61
SPC0612SQFTLEDXL 20L	2000	1698	31	54
SPC0612SQFTLEDXL 30L	3000	2359	49	48

1 Nominal Source Lumens At Any CCT 2 Nominal Delivered Lumens At Any CCT



CANDELA CURVES

- 1 Vertical Plane at Horizontal Angle 0°
- 2 Vertical Plane at Horizontal Angle 22.5°
- 3 Vertical Plane at Horizontal Angle 45°
- 4 Vertical Plane at Horizontal Angle 67.5°

PROJECT: _____
 QUANTITY: _____ TYPE: _____



PRODUCT SELECTOR GUIDE

SERIES	LUMENS	CCT	OPTICS	DRIVER/DIMMING	LENS	MOUNTING	FINISH
SPC0612SQFTLEDXL			FT		GL		

EXAMPLE

SPC0612SQFTLEDXL	10L	35K	FT	DS10X	GL	WM	MW
-------------------------	-----	-----	----	-------	----	----	----

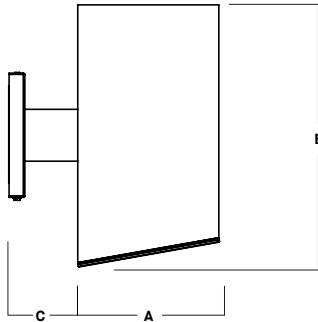
SERIES	LUMENS ¹	CCT	OPTICS	DRIVER / DIMMING ³	OPTIONS ⁴	TRIM	MOUNTING ⁵	FINISH ⁷			
SPC0612SQFTLEDXL	10L	1000 Lm	FT Forward Throw	EX Electronic Driver, 120V/277V	FS Fuse Holder and Fuse	GL Clear Glass Lens	WM Wall Mount	MW Matte White			
	13L	1300 Lm							CR Corrosion Resistant	PT Platinum Silver	
	20L	2000 Lm									EMMR 7W Remote EM
	30L	3000 Lm									
		DS2W1 ELV/MLV, 120V	GS Gasket	WL Wet Location	EMMR 7W Remote EM						

NOTES:

1 Nominal Source Lumens At Any CCT 2 Nominal Delivered Lumens At Any CCT 3 Contact Factory for Additional Options 4 See Product Options Page for Details
 5 See Mounting Page for Details on Components and Finishes 6 Reference Color Sheet Located on Product Webpage for Full List of Available Colors/Consult Factory for Special Finishes 7 Standard Finishes



DIMENSIONS



A	B	C
6.0 152.4 mm	11.25 285.7 mm	3.0 76.2 mm

APPLICATION

6" Square LED XL series cylinder with forward throw optic (peak candela at 50° above nadir.) May be pendant or surface mounted. Ideal for wall, stairwell, and pathway illumination.

FINISH

Multi-stage polyester powder-coat process applied on our dedicated paint lines. A wide variety of standard and custom finishes are available. All exposed materials are chromate pretreated to resist corrosion.

ELECTRONICS

LED system features Xicato LED module with proprietary phosphor technology that provides consistent stable color with CCT control of +/- 100K over life of the light engine. Base CRI is 83 with 2-step MacAdam Ellipse binning. Variety of electronic 120V/277V and dimming drivers.

CONSTRUCTION

The housing is made from a heavy walled aluminum extrusion. Within the housing, the design uses a combination of corrosion resistant and stainless steel components. Optics formed high purity aluminum. Tempered glass safety lens. Die cut neoprene gasket.

CODE COMPLIANCE

BAA Compliant. ETL listed for damp locations. Wet location option. Manufactured and tested to UL standard No.1598/8750.

STANDARD FINISHES SHOWN WITH CF0412PC

MW
Matte White



MB
Matte Black

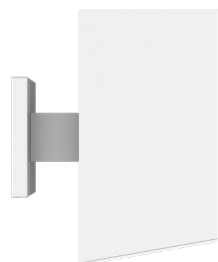


PT
Platinum Silver

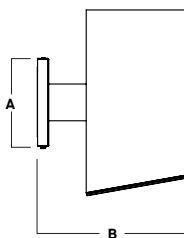


WALL MOUNT DETAIL

WM
WALL MOUNT



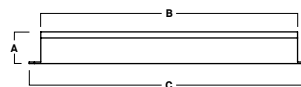
SIDE VIEW



A	B
5.3 134.6 mm	8.9 226.1 mm

REMOTE EMERGENCY BATTERY OPTIONS

EMRM* - 7W REMOTE EMERGENCY BATTERY
(50' MAX)



A	B	C
1.3	12.6	13.0

*OTHER EM BATTERY SIZES AVAILABLE, CONSULT FACTORY