

SR12SQLEDOA

APPLICATION

12" square recessed LED downlight LED features soffit/area light for optimal performance.

FEATURES

Efficient, powerful LED light source, designed to exceed 50,000 hours of life (**L70**). Multi-Bar mounting brackets. All LED modules and drivers are replaceable and up-gradeable. New and Retrofit/Remodeler options. Wet location use screws fasteners. (4)

FINISH

A variety of architectural powdercoat and anodized finishes are available. Matte White flange is standard.

ELECTRONICS

LED module features high brightness white Nichia LEDs. 3-step MacAdam Ellipses binning and CRI 84 minimum. Variety of electronic 120V/277V and dimming drivers.

CONSTRUCTION

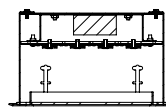
Housing constructed of .050 5052-H32 aluminum. Trim fabricated from aluminum extrusion and finished to specification.

CODE COMPLIANCE

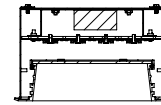
BAA Compliant. Non-IC rated. ETL certified to meet US and Canadian standards. Suitable for dry or damp locations. Optional Wet location. Manufactured and tested to UL standards No. 1598/8750.

LUMENS / WATTAGE DATA			
PART NUMBER	DELIVERED LUMENS ¹	SYSTEM WATTS	LPW
SR12SQLEDOA 11L	861	10.6	81
SR12SQLEDOA 22L	1674	18.4	91
SR12SQLEDOA 33L	2441	26	94
SR12SQLEDOA 44L	3209	33.7	95

¹ Nominal Delivered Lumens at 35K xx RT1212 MW xx FO



FT-Flush Trim/Lens



RT-Regressed Trim/Lens



Retrofit/Remodeler with Flush Trim

SERIES	LUMENS ¹	CCT	DRIVER / VOLTAGE ²	OPTIONS ³	TRIM	FINISH ⁵	OPTIONS						
SR12SQLEDOA	11L	850 Lm	E_ Electronic Driver DS10_ 10%, 0-10V	1 120V 2 277V	BH27 ⁴ 27" Solid Bars H12 12" - 24" Expandable Bars H06 6" - 12" Expandable Bars CB24 24" C-Channel Bars FS Fusing EM Integral Emergency Battery CR Corrosion Resistant RM Remodeler Housing	FLUSH TRIM FT1212 Flush Extruded Aluminum Door	TRIM / FLANGE FINISH MW ⁵ Matte White MB Matte Black PT Platinum CC ⁶ Custom Color	LENS FO ⁷ Matte White Acrylic Lens 90% Efficient SO Solite Lens WL ⁸ Wet Location					
	22L	1650 Lm							30K 3000K	35K 3500K	REGRESSED TRIM RT1212 Regressed Extruded Aluminum Door	REGRESSED FINISH MW ⁵ Matte White MB Matte Black PT Platinum Silver CC ⁶ Custom Color	TRIM / FLANGE FINISH WF ⁷ White Flange MF Matching Flange
	33L	2450 Lm							40K 4000K	50K 5000K			
	44L	3200 Lm											

EXAMPLE: SR12SQLEDOA33L35KE1BH27/FT1212MW/FO

NOTES:
1 Nominal Delivered Lumens at 35K xx RT1212 MW xx FO 2 Contact Factory for Additional Options 3 See Product Options Page for Details 4 Standard Bar Hangers 5 Contact Factory for Special Finishes 6 Standard Finish 7 For use with Non Matte White Trim Finish 8 Standard Lens 9 Trim Secured with 4 Screws



PROJECT: _____
QUANTITY: _____ TYPE: _____



12" SQUARE LENSED ENDURO SERIES / PHOTOMETRIC DATA

recessed
fixtures



SR12SQLEDOA 44L 35K xx FT1212 MW xx FO

CANDLEPOWER CURVE TEST SP-01642_3	INTENSITY CANDELA 0° AZIMUTH	ZONAL LUMENS		SINGLE UNIT: PERFORMANCE HORIZONTAL FOOTCANDLES INITIAL DOWNLIGHT ONLY				MULTIPLE UNITS: PERFORMANCE 80/50/20% REFLECTANCES HORIZONTAL FOOTCANDLES AND WATTS/SQ FT							
		0°	0° - 10°	95	3%	Mounting Distance	FC at Beam Center	Diameter at Beam Angle	FC at Beam Edge	Ceiling Height	Fixture Spacing	RCR 2		RCR 4	
	0°	989	0° - 10°	95	3%										
	0°	989	0° - 20°	361	13%										
	5°	987	0° - 30°	759	28%	5.5'	33 fc	15.5'	3 fc	9'	6'	57	0.80	64	1.15
	15°	950	0° - 40°	1234	45%	6.5'	23 fc	18.3'	2 fc	12'	8'	39	0.54	30	0.54
	25°	877	0° - 60°	2160	79%	7.5'	18 fc	21.2'	2 fc	16'	12'	13	0.18	15	0.27
	35°	772	0° - 80°	2675	98%	8.5'	14 fc	24.0'	1 fc	Delivered Illuminance Rating: (DIR)					
	45°	645	0° - 90°	2722	99%	10.0'	10 fc	28.2'	1 fc						
	55°	504	Total	2736	100%	12.0'	7 fc	33.9'	1 fc	Recessed mounting Square rooms used for multiple units: RCR 2: Length & Width = Ceiling Ht. - 2.5' x 5.00 RCR 4: Length & Width = Ceiling Ht. - 2.5' x 2.50 * Average Initial Footcandles at 2.5' Above Floor					
	90°	11				14.0'	5 fc	39.5'	0 fc						
						16.0'	4 fc	45.1'	0 fc						

Delivered Lumens: 2736
Luminaire Watts: 33.7
LER: 81.19

CP at 0° (Nadir): 989

Beam Angle: 109°
Spacing Ratio: 1.24
Melanopic Ratio: 0.54

SR12SQLEDOA 44L 35K xx RT1212 MW xx FO

CANDLEPOWER CURVE TEST SP-01643_3	INTENSITY CANDELA 0° AZIMUTH	ZONAL LUMENS		SINGLE UNIT: PERFORMANCE HORIZONTAL FOOTCANDLES INITIAL DOWNLIGHT ONLY				MULTIPLE UNITS: PERFORMANCE 80/50/20% REFLECTANCES HORIZONTAL FOOTCANDLES AND WATTS/SQ FT							
		0°	0° - 10°	124	4%	Mounting Distance	FC at Beam Center	Diameter at Beam Angle	FC at Beam Edge	Ceiling Height	Fixture Spacing	RCR 2		RCR 4	
	0°	1302	0° - 10°	124	4%										
	0°	1302	0° - 20°	470	15%										
	5°	1295	0° - 30°	980	31%	5.5'	43 fc	13.6'	5 fc	9'	6'	68	0.80	78	1.15
	15°	1234	0° - 40°	1573	49%	6.5'	31 fc	16.0'	4 fc	12'	8'	46	0.54	36	0.54
	25°	1119	0° - 60°	2659	83%	7.5'	23 fc	18.5'	3 fc	16'	12'	16	0.18	18	0.27
	35°	964	0° - 80°	3163	99%	8.5'	18 fc	21.0'	2 fc	Delivered Illuminance Rating: (DIR)					
	45°	771	0° - 90°	3199	100%	10.0'	13 fc	24.7'	2 fc						
	55°	565	Total	3209	100%	12.0'	9 fc	29.6'	1 fc	Recessed mounting Square rooms used for multiple units: RCR 2: Length & Width = Ceiling Ht. - 2.5' x 5.00 RCR 4: Length & Width = Ceiling Ht. - 2.5' x 2.50 * Average Initial Footcandles at 2.5' Above Floor					
	90°	5				14.0'	7 fc	34.5'	1 fc						
						16.0'	5 fc	39.4'	1 fc						

Delivered Lumens: 3209
Luminaire Watts: 33.7
LER: 95.22

CP at 0° (Nadir): 1302

Beam Angle: 102°
Spacing Ratio: 1.19
Melanopic Ratio: 0.55

