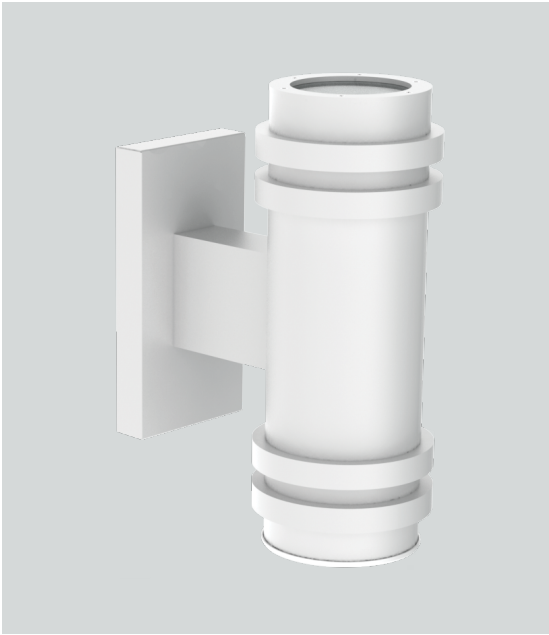


6" ROUND DECO DIRECT / INDIRECT DECORATIVE SERIES



CO618DECUDXT - WALL MOUNT

APPLICATION

6" round x 18" high decorative direct / indirect XT series cylinder luminaire for accent and general illumination.

FEATURES

Spectrum's Cylinder series provides traditional architectural style with high performance energy efficient illumination. Rugged design with flexible mounting, finish and LED options make these extremely versatile fixtures. Quick change LED module with interchangeable optics for job site flexibility and fixture upgrade.

FINISH

Multi-stage polyester powder-coat process applied on our dedicated paint lines. See mounting and color pages for standard finishes. All exposed materials are chromate pretreated to resist corrosion.

ELECTRONICS

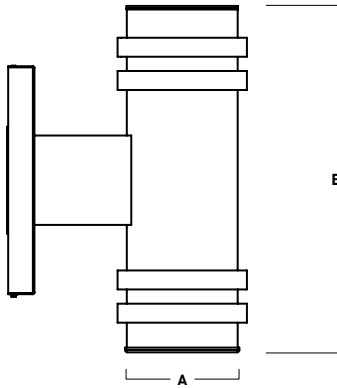
LED system features Xicato LED module with proprietary phosphor technology that provides consistent stable color with CCT control of +/- 100K over life of the light engine. Base CRI is 83 with 2-step MacAdam Ellipse binning. High CRI is 98 with 1 x 2-step MacAdam Ellipse binning. Variety of electronic 120V/277V and dimming drivers. 1 or 2 circuit operation.

CONSTRUCTION

Fabricated seamless aluminum fixture housing. Silicone gasket seals optical chamber. Specular primary optical reflectors provide high efficiency illumination. Impact resistant tempered glass lenses. Stainless steel hardware with galvanized steel brackets to resist corrosion. Trim formed from .063 thick high purity aluminum and finished to specification.

CODE COMPLIANCE

BAA compliant. ETL certified to meet US and Canadian standards. Suitable for dry or damp locations. Wet Location Option. Manufactured and tested to UL standards No. 1598/8750.



A	B
6.0	18.1
152.4 mm	459.7 mm

Fixture Weight: 27.5 lbs

LUMENS / WATTAGE DATA				
PART NUMBER	SOURCE LUMENS	DELIVERED LUMENS ²	SYSTEM WATTS ³	LPW
CO618DECUDXT10Lx2	2000	1251	18.2	69
CO618DECUDXT13Lx2	2600	1685	26.0	65
CO618DECUDXT20Lx2	4000	2592	43.4	60

SERIES	UPLIGHT ⁴		DOWNLIGHT		CCT		DRIVER / DIMMING ⁶		OPTIONS ⁷		TRIM		MOUNTING ¹⁰		FINISH ¹¹			
CO618DECUDXT	LUMENS ¹	OPTICS	LUMENS ¹	OPTICS	83 CRI		EX Electronic Driver, 120V/277V	WL Wet Location	TSG Semi Diffuse Low Iridescent	WM3 Wall Mount 3" Extension	MW ¹² Matte White	TSC Same Color as Cylinder	WM5 Wall Mount 5" Extension	MB ¹² Matte Black	PT ¹² Platinum Silver	CC Custom Color		
		10L		XN ⁵ 12°	10L	XN ⁵ 12°											27K	2700K
	1000 Lm	ND 20°	1000 Lm	ND 20°	30K	3000K	DO10X	1%, 0-10V, 120V/277V	CR Corrosion Resistant	TCC Custom Color	EMRM 7W Remote EM	EMEN 7W Remote with Enclosure	GL ⁴ Clear Glass Lens	SO ⁹ Micro Prism Solite™ Lens	FG Frosted Glass Lens			
		MD 38°		MD 40°	35K	3500K												DS2W1
	1300 Lm	WD 44°	1300 Lm	WD 45°	40K	4000K	98 CRI											
		XW 60°		XW 56°	27HK	2700K	30HK	3000K	35HK	3500K	40HK	4000K						
	2000 Lm		2000 Lm															

EXAMPLE: CO618DECUDXT20LND20LWD35KEX/TSGSO/WM5/MW

NOTES:
 1 Nominal Source Lumens at Any CCT 2 Nominal Delivered Lumens at 83 CRI at Any CCT with MD-GL, MD-TSG-SO 3 At 83 CRI 4 1/4" Clear Glass Only 5 13L Max/XN not Available with 98 CRI Option 6 Contact Factory for Additional Options 7 See Product Options Page for Details 8 Standard Lens for All Indirect and Direct: XN, ND 9 Standard Lens for Direct: MD, WD, XW 10 See Mounting Page for Details on Components and Finishes 11 Reference Color Sheet Located on Product Webpage for Full List of Available Colors/Consult Factory for Special Finishes 12 Standard Finishes



PROJECT: _____
 TYPE: _____



Dimensions and values shown are nominal. Spectrum Lighting continually works to improve products and reserves the right to make changes which may alter the performance or appearance of products.

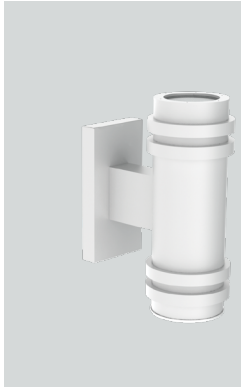
6" ROUND DECO DIRECT / INDIRECT

DECORATIVE SERIES / FIXTURE OPTIONS

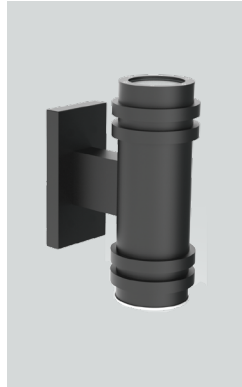


STANDARD FINISHES

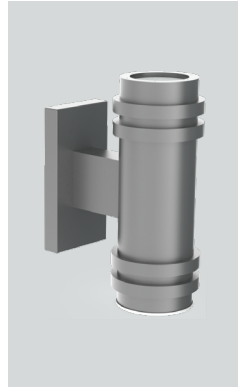
MW
MATTE WHITE



MB
MATTE BLACK

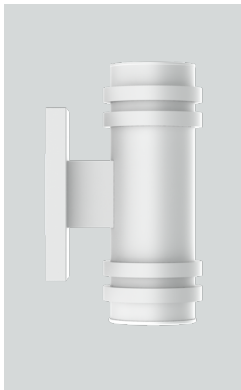


PT
PLATINUM SILVER

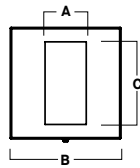


WALL MOUNT DETAIL

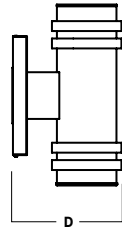
WM3
WALL MOUNT 3" EXTENSION



FRONT VIEW

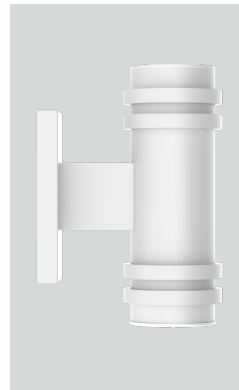


SIDE VIEW

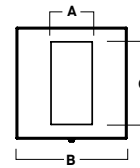


A	B	C	D
2.4	6.4	4.7	10.9
61.0 mm	162.6 mm	119.4 mm	276.9 mm

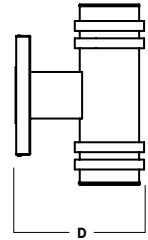
WM5
WALL MOUNT 5" EXTENSION



FRONT VIEW



SIDE VIEW



A	B	C	D
2.4	6.4	4.7	12.9
61.0 mm	162.6 mm	119.4 mm	327.7 mm

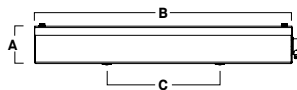
EMERGENCY BATTERY OPTIONS

EMRM* - 7W REMOTE EMERGENCY BATTERY
(50' MAX)



A	B	C
1.3	12.6	13.0

EMEN* - 7W REMOTE EMERGENCY BATTERY
WITH ENCLOSURE (50' MAX)



A	B	C
2.0	17.0	6.2

*OTHER EM BATTERY SIZES AVAILABLE, CONSULT FACTORY

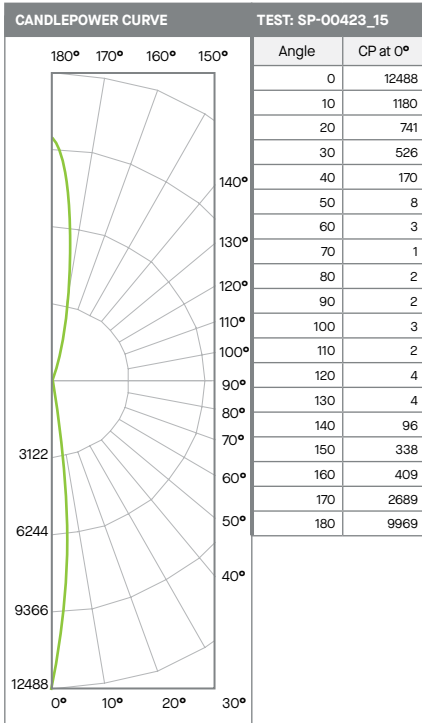
6" ROUND DECO DIRECT / INDIRECT

DECORATIVE SERIES / PHOTOMETRIC DATA



C06xxUDXT-13LXNGL-13LXN-xxKEX-TSG-GL

13Lx2 XTRA NARROW - 83 CRI



ZONAL LUMENS		
0-20	725	30%
0-40	1251	51%
0-60	1289	53%
0-90	1295	53%
90-120	7	0%
90-150	168	7%
90-180	1144	47%
Total Lumens	2438	100%

SINGLE UNIT: PERFORMANCE INITIAL FOOTCANDLES AND BEAM ANGLE DIAMETERS			
Mounting Height*	FC at Center	Diameter of Beam**	FC at Beam**
5.5'	413	0.9'	205
6.5'	296	1.1'	147
7.5'	222	1.3'	110
8.5'	173	1.4'	86
10.0'	125	1.7'	62
12.0'	87	2.0'	43
14.0'	64	2.4'	32
16.0'	49	2.7'	24

SINGLE UNIT: PERFORMANCE INITIAL FOOTCANDLES AND BEAM ANGLE DIAMETERS			
Mounting Distance*	FC at Center	Diameter of Beam**	FC at Beam**
4.0'	781	1.1'	384
5.0'	500	1.3'	246
6.0'	347	1.6'	170
8.0'	195	2.1'	96
10.0'	125	2.6'	61
12.0'	87	3.2'	43
14.0'	64	3.7'	31
16.0'	49	4.2'	24

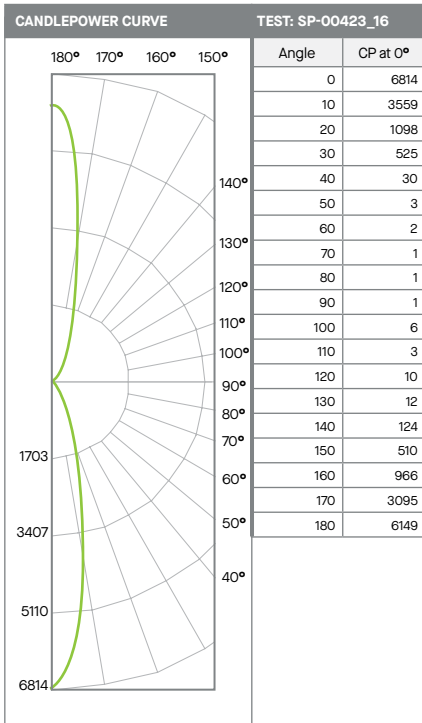
Delivered Lumens: 2438
Luminaire Watts: 36.8
LER: 66

CP @ 0° (Nadir): 12488
Direct Beam Angle: 9.7°
Indirect Beam Angle: 15.0°
CRI: 83

Spacing Ratio: N/A
Output Multipliers: 10L x 0.74

C06xxUDXT-20LNDGL-20LND-xxKEX-TSG-GL

20Lx2 NARROW - 83 CRI



ZONAL LUMENS		
0-20	1043	32%
0-40	1562	48%
0-60	1573	49%
0-90	1576	49%
90-120	16	0%
90-150	298	9%
90-180	1663	51%
Total Lumens	3239	100%

SINGLE UNIT: PERFORMANCE INITIAL FOOTCANDLES AND BEAM ANGLE DIAMETERS			
Mounting Height*	FC at Center	Diameter of Beam**	FC at Beam**
5.5'	225	2.0'	109
6.5'	161	2.4'	78
7.5'	121	2.8'	59
8.5'	94	3.2'	46
10.0'	68	3.7'	33
12.0'	47	4.5'	23
14.0'	35	5.2'	17
16.0'	27	6.0'	13

SINGLE UNIT: PERFORMANCE INITIAL FOOTCANDLES AND BEAM ANGLE DIAMETERS			
Mounting Distance*	FC at Center	Diameter of Beam**	FC at Beam**
4.0'	426	1.4'	207
5.0'	273	1.8'	132
6.0'	189	2.1'	92
8.0'	106	2.8'	52
10.0'	68	3.5'	33
12.0'	47	4.2'	23
14.0'	35	4.9'	17
16.0'	27	5.6'	13

Delivered Lumens: 3239
Luminaire Watts: 43.4
LER: 75

CP @ 0° (Nadir): 6814
Direct Beam Angle: 21.1°
Indirect Beam Angle: 20.0°
CRI: 83

Spacing Ratio: N/A
Output Multipliers: 10L x 0.48, 13L x 0.65

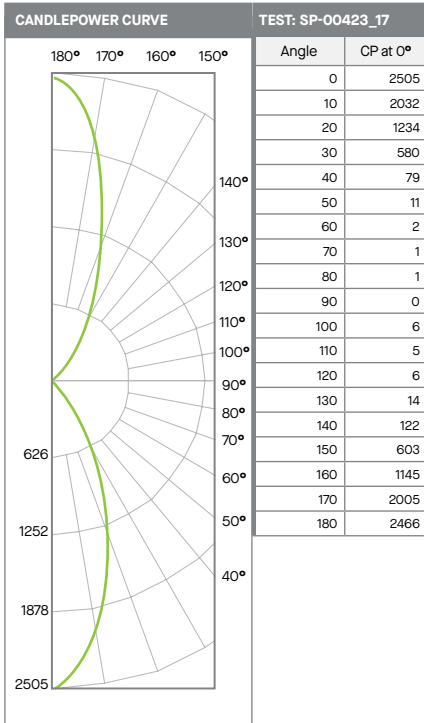
6" ROUND DECO DIRECT / INDIRECT

DECORATIVE SERIES / PHOTOMETRIC DATA



C06xxUDXT-20LMDGL-20LMD-xxKEX-TSG-SO

20Lx2 MEDIUM - 83 CRI



Beam Angle	Lumens	%
0-20	674	26%
0-40	1272	49%
0-60	1305	50%
0-90	1308	50%
90-120	15	1%
90-150	270	10%
90-180	1284	50%
Total Lumens	2592	100%

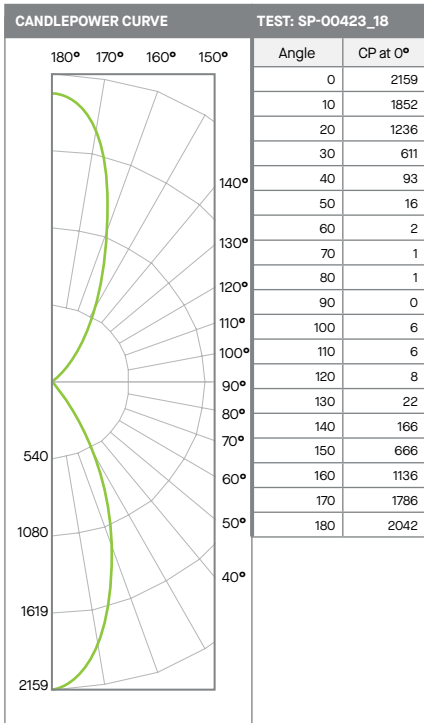
Mounting Height*	FC at Center	Diameter of Beam**	FC at Beam**
5.5'	83	4.0'	37
6.5'	59	4.7'	26
7.5'	45	5.4'	20
8.5'	35	6.1'	15
10.0'	25	7.2'	11
12.0'	17	8.6'	8
14.0'	13	10.1'	6
16.0'	10	11.5'	4

Mounting Distance*	FC at Center	Diameter of Beam**	FC at Beam**
4.0'	157	2.8'	70
5.0'	100	3.5'	45
6.0'	70	4.2'	31
8.0'	39	5.7'	17
10.0'	25	7.1'	11
12.0'	17	8.5'	8
14.0'	13	9.9'	6
16.0'	10	11.3'	4

Delivered Lumens: 2592 CP @ 0° (Nadir): 2505 Spacing Ratio: N/A
 Luminaire Watts: 43.4 Direct Beam Angle: 39.6° Output Multipliers: 10L x 0.48, 13L x 0.65
 LER: 60 Indirect Beam Angle: 39.0°
 CRI: 83

C06xxUDXT-20LWDGL-20LWD-xxKEX-TSG-SO

20Lx2 WIDE - 83 CRI



Beam Angle	Lumens	%
0-20	627	24%
0-40	1255	48%
0-60	1298	50%
0-90	1302	50%
90-120	16	1%
90-150	329	13%
90-180	1307	50%
Total Lumens	2609	100%

Mounting Height*	FC at Center	Diameter of Beam**	FC at Beam**
5.5'	71	4.6'	30
6.5'	51	5.4'	22
7.5'	38	6.2'	16
8.5'	30	7.1'	13
10.0'	22	8.3'	9
12.0'	15	10.0'	6
14.0'	11	11.6'	5
16.0'	8	13.3'	4

Mounting Distance*	FC at Center	Diameter of Beam**	FC at Beam**
4.0'	135	3.1'	59
5.0'	86	3.8'	38
6.0'	60	4.6'	26
8.0'	34	6.1'	15
10.0'	22	7.7'	9
12.0'	15	9.2'	7
14.0'	11	10.7'	5
16.0'	8	12.3'	4

Delivered Lumens: 2609 CP @ 0° (Nadir): 2159 Spacing Ratio: N/A
 Luminaire Watts: 43.4 Direct Beam Angle: 45.1° Output Multipliers: 10L x 0.48, 13L x 0.65
 LER: 60 Indirect Beam Angle: 42.0°
 CRI: 83

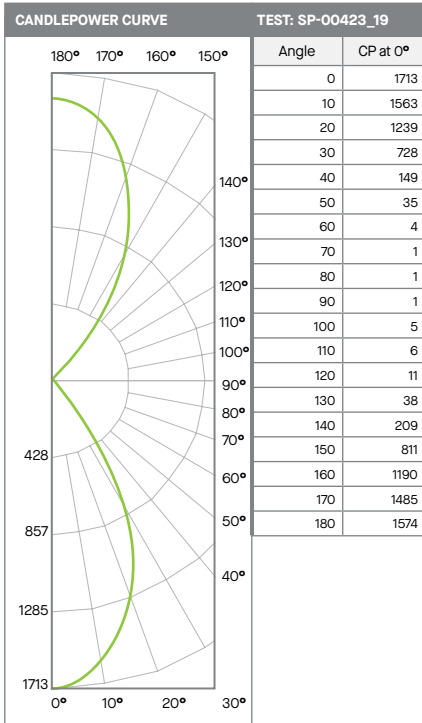
6" ROUND DECO DIRECT / INDIRECT

DECORATIVE SERIES / PHOTOMETRIC DATA



C06xxUDXT-20LXWGL-20LXW-xxKEX-TSG-SO

20Lx2 XTRA WIDE - 83 CRI



Angle	CP at 0°
0	1713
10	1563
20	1239
30	728
40	149
50	35
60	4
70	1
80	1
90	1
100	5
110	6
120	11
130	38
140	209
150	811
160	1190
170	1485
180	1574

Beam Angle	Lumens	%
0-20	556	20%
0-40	1273	47%
0-60	1349	50%
0-90	1354	50%
90-120	17	1%
90-150	407	15%
90-180	1365	50%
Total Lumens	2719	100%

Delivered Lumens: 2719
 Luminaire Watts: 43.4
 LER: 63

Mounting Height*	FC at Center	Diameter of Beam**	FC at Beam**
5.5'	57	5.4'	23
6.5'	41	6.3'	16
7.5'	30	7.3'	12
8.5'	24	8.3'	10
10.0'	17	9.8'	7
12.0'	12	11.7'	5
14.0'	9	13.7'	4
16.0'	7	15.6'	3

* From aperture to horizontal surface below.
 ** At IESNA defined Beam Angle, to 50% Max. CP.

CP @ 0° (Nadir): 1713
 Direct Beam Angle: 52.0°
 Indirect Beam Angle: 55.5°
 CRI: 83

Spacing Ratio: N/A
 Output Multipliers: 10L x 0.48, 13L x 0.65

Mounting Distance*	FC at Center	Diameter of Beam**	FC at Beam**
4.0'	107	4.2'	42
5.0'	69	5.3'	27
6.0'	48	6.3'	19
8.0'	27	8.4'	10
10.0'	17	10.5'	7
12.0'	12	12.6'	5
14.0'	9	14.7'	3
16.0'	7	16.8'	3

* From top of fixture to horizontal surface above.
 ** At IESNA defined Beam Angle, to 50% Max. CP.