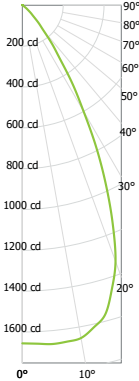


CANDLEPOWER CURVE
TEST SP-15008_3



Delivered Lumens: 1330
Luminaire Watts: 15
LER: 88.67

INTENSITY
CANDELA
0° AZIMUTH

0°
0° 1656
5° 1665
15° 1568
25° 968
35° 323
45° 78
55° 14
90° 1

CP at 0° (Nadir): 1656
CRI: 80+

ZONAL LUMENS

0° - 10°	160	12%
0° - 20°	589	44%
0° - 30°	1027	77%
0° - 40°	1236	93%
0° - 60°	1316	99%
0° - 80°	1321	99%
0° - 90°	1322	99%
Total	1330	100%

Beam Angle: 54°
Spacing Ratio: 0.87
Melanopic Ratio 0.58

SINGLE UNIT: PERFORMANCE
HORIZONTAL FOOTCANDLES
INITIAL DOWNLIGHT ONLY

Mounting Distance	FC at Beam Center	Diameter at Beam Angle	FC at Beam Edge
6.5'	39 fc	6.6'	14 fc
7.5'	29 fc	7.6'	10 fc
8.5'	23 fc	8.6'	8 fc
10.0'	17 fc	10.1'	6 fc
12.0'	11 fc	12.1'	4 fc
14.0'	8 fc	14.1'	3 fc
16.0'	6 fc	16.2'	2 fc
20.0'	4 fc	20.2'	1 fc

CCT Multiplier: 30K x .93

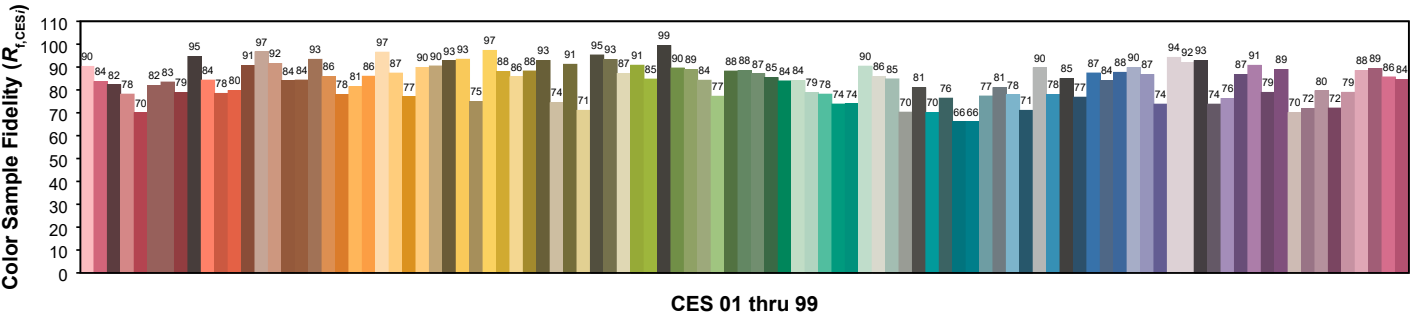
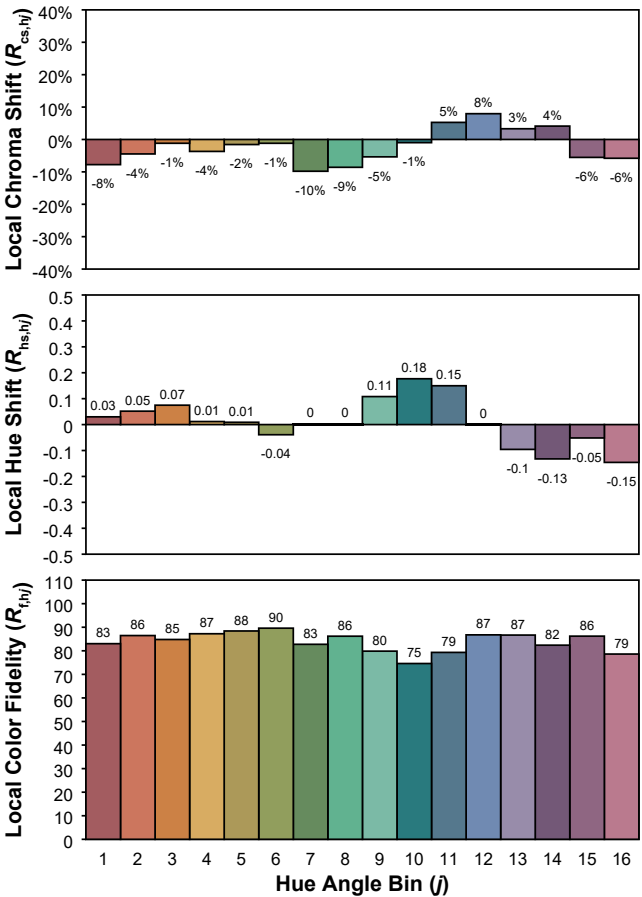
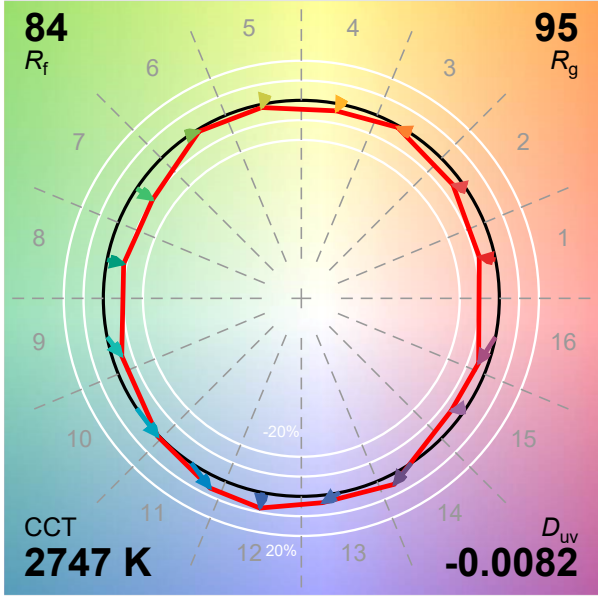
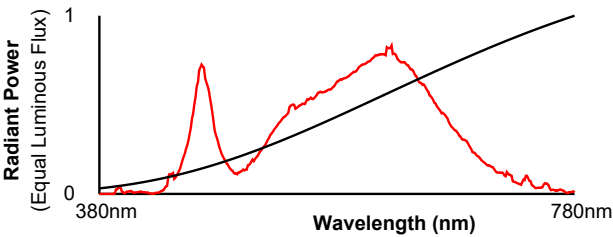
MULTIPLE UNITS: PERFORMANCE
80/50/20% REFLECTANCES
HORIZONTAL FOOTCANDLES AND WATTS/SQ FT

Ceiling Height	Fixture Spacing	RCR 2		RCR 4	
		FC +	W/Sq. Ft.	FC +	W/Sq. Ft.
9'	4'	87	0.97	57	0.71
12'	5'	48	0.53	42	0.53
15'	6'	33	0.37	23	0.29
Delivered Illuminance Rating: (DIR)		90 FC per W/Sq. Ft.		79 FC per W/Sq. Ft.	
1' Suspension Length to luminous aperture Square rooms used for multiple units: RCR 2: Length & Width = Ceiling Ht. - 3.5' x 5.00 RCR 4: Length & Width = Ceiling Ht. - 3.5' x 2.50 + Average Initial Footcandles at 2.5' Above Floor					

IES TM-30-18 Color Rendition Report

Manufacturer: Spectrum Lighting

Model: SP-15008_3 ~ TSRA25 13L 35K XW E1 BET xx



Luminous Flux:	1158 lm
Radiant Flux:	4 Wrad
Electrical Power:	15 W
Efficacy:	77 lm/W
Melanopic Flux:	667 mel lm
Melanopic Ratio:	0.58
CCT:	2747K
xy Coordinates:	0.439, 0.384
u'v' Coordinates:	0.261, 0.514
Delta u'v':	-0.0082

CIE u'v' (1976)

