



## 8" ROUND DIRECT / INDIRECT FOCUSED ILLUMINATION



### CO812UDXT, CO818UDXT, CO824UDXT 2 CABLE MOUNT WITH CORD

#### APPLICATION

8" round x 12", 18" or 24" high 8" diameter cylinder luminaire for direct / indirect illumination.

#### FEATURES

Spectrum's Cylinder series provides traditional architectural style with high performance and energy efficient illumination. Rugged design with flexible mounting, finish and LED options make these extremely versatile fixtures. Interchangeable optics for job site flexibility and fixture upgrade.

#### FINISH

Multi-stage polyester powder-coat process applied on our dedicated paint lines. See mounting and color pages for standard finishes. All exposed materials are chromate pre-treated to resist corrosion.

#### ELECTRONICS

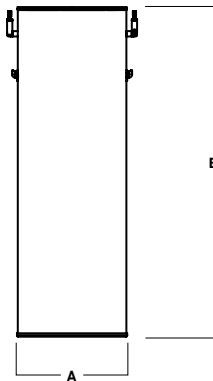
LED system features Xicato LED module with proprietary phosphor technology that provides consistent stable color with CCT control of +/- 100K over life of the light engine. Base CRI is 83 with 2-step MacAdam Ellipse binning. High CRI is 98 with 1 x 2-step MacAdam Ellipse binning. Variety of electronic 120V/277V and dimming drivers.

#### CONSTRUCTION

Fabricated seamless aluminum fixture housing, specular primary reflector provides high efficiency illumination. Stainless steel hardware with galvanized brackets to resist corrosion. Machined aluminum trims finished to specification.

#### CODE COMPLIANCE

BAA compliant. ETL certified to meet US and Canadian standards. Suitable for dry



SERIES	A	B
CO812UDXT	8.0	12.2
CO818UDXT	8.0	18.0
CO824UDXT	8.0	24.3

LUMENS / WATTAGE DATA				
PART NUMBER	SOURCE LUMENS	DELIVERED LUMENS <sup>2</sup>	SYSTEM WATTS	LPW
CO824UDXT10L	2000	1497	18.2	82
CO824UDXT13L	2600	2017	26.0	78
CO824UDXT20L	4000	3103	43.4	71

SERIES	LUMENS <sup>1/3</sup>	CCT	OPTICS		DRIVER / DIMMING <sup>6</sup>		TRIM	MOUNTING <sup>10</sup>	FINISH <sup>12</sup>	
CO812UDXT <sup>4</sup> 8" x 12" Cylinder	10L 1000 Lm	83 CRI	UPLIGHT <sup>5</sup>	DOWNLIGHT	EX Electronic Driver, 120V/277V	DS10X 10%, 0-10V, 120V/277V	DOWNLIGHT TSG <sup>7</sup> Semi Diffuse Low Iridescent Clear	CD2x8R <sup>11</sup>	2 Cable Mount with Cord	MW <sup>7</sup> Matte White MB <sup>7</sup> Matte Black PT <sup>7</sup> Platinum Silver CC Custom Color
	13L 1300 Lm	27K 2700K	ND 23°	ND 22°						
CO818UDXT 8" x 18" Cylinder	20L 2000 Lm	30K 3000K	MD 37°	MD 39°	DO10X 1%, 0-10V, 120V/277V	DS2W1 ELV/MLV, 120V	TCY Same Color as Cylinder TCC Custom Color	EMRM 7W Remote EM EMEN 7W Remote with Enclosure		
		35K 3500K	WD 42°	WD 46°						
CO824UDXT 8" x 24" Cylinder		40K 4000K	XW 58°	XW 57°			NL No Lens GL <sup>8</sup> Clear Glass Lens SO <sup>9</sup> Micro Prism Solite™ Lens	EMERGENCY BATTERY OPTIONS		
		98 CRI								
		27HK 2700K								
		30HK 3000K								
		35HK 3500K								
		40HK 4000K								

**EXAMPLE:** CO824UDXT20L35KMDWDEX/TSGSO/CD2x8R36/MW

#### NOTES:

1 Nominal Source Lumens at Any CCT 2 Nominal Delivered Lumens at 83 CRI at Any CCT with WD-GL, WD-TSG-SO 3 Uplight & Downlight Use The Same Lumen Output 4 98 CRI 13L Max 5 1/4" Clear Glass Only  
6 Contact Factory for Additional Options 7 Standard Finishes 8 Standard Lens for ND 9 Standard Lens for MD, WD, XW 10 See Mounting Page for Details on Components and Finishes 11 Specify Length in Inches: See Mounting Page for Available Lengths 12 Reference Color Sheet Located on Product Webpage for Full List of Available Colors



PROJECT: \_\_\_\_\_  
TYPE: \_\_\_\_\_



Dimensions and values shown are nominal. Spectrum Lighting continually works to improve products and reserves the right to make changes which may alter the performance or appearance of products.

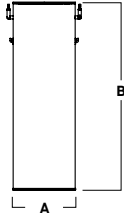
# 8" ROUND DIRECT / INDIRECT

## FOCUSED ILLUMINATION / FIXTURE OPTIONS



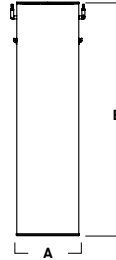
### SERIES SIZES

C0812UDXT



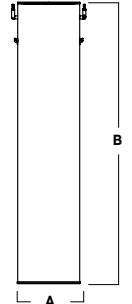
A	B
8.0	12.2
203.2 mm	309.9 mm

C0818UDXT



A	B
8.0	18.0
203.2 mm	457.2 mm

C0824UDXT



A	B
8.0	24.3
203.2 mm	617.2 mm

### STANDARD FINISHES

MW  
MATTE WHITE



MB  
MATTE BLACK

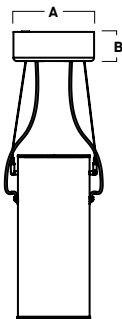


PT  
PLATINUM SILVER



### MOUNTING TYPES

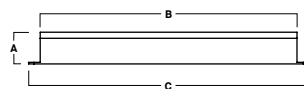
CD2x8R  
2 CABLE MOUNT WITH CORD



A	B
9.0	3.25
228.6 mm	82.6 mm

### REMOTE EMERGENCY BATTERY OPTIONS

EMRM\* - 7W REMOTE EMERGENCY BATTERY  
(50' MAX)



A	B	C
1.3	12.6	13.0

EMEN\* - 7W REMOTE EMERGENCY BATTERY  
WITH ENCLOSURE (50' MAX)



A	B	C
2.0	17.0	6.2

\*OTHER EM BATTERY SIZES AVAILABLE, CONSULT FACTORY

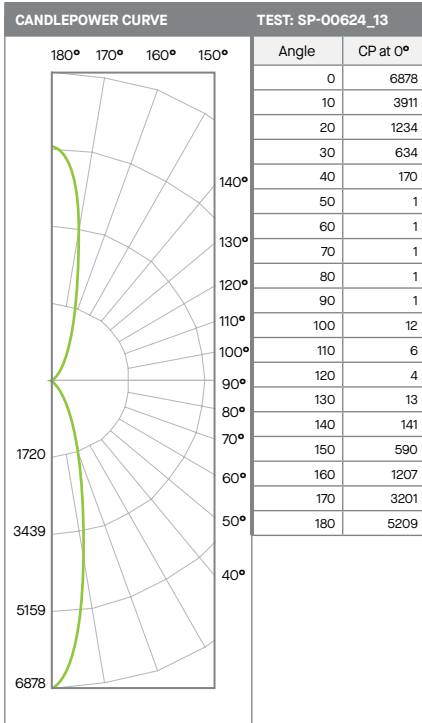
# 8" ROUND DIRECT / INDIRECT

## FOCUSED ILLUMINATION / PHOTOMETRIC DATA



### C0824UDXT-20LNDGL-20LND-xxKEX-TSG-GLxxx

### 20Lx2 NARROW - 83 CRI



Beam Angle	Lumens	%
0-20	1135	33%
0-40	1802	53%
0-60	1844	54%
0-90	1847	54%
90-120	30	1%
90-150	280	8%
90-180	1568	46%
<b>Total Lumens</b>	<b>3414</b>	<b>100%</b>

Mounting Height*	FC at Center	Diameter of Beam**	FC at Beam**
5.5'	227	2.0'	110
6.5'	163	2.4'	79
7.5'	122	2.8'	59
8.5'	95	3.1'	46
10.0'	69	3.7'	33
12.0'	48	4.4'	23
14.0'	35	5.2'	17
16.0'	27	5.9'	13

Mounting Distance*	FC at Center	Diameter of Beam**	FC at Beam**
4.0'	430	1.6'	206
5.0'	275	2.0'	132
6.0'	191	2.5'	92
8.0'	107	3.3'	52
10.0'	69	4.1'	33
12.0'	48	4.9'	23
14.0'	35	5.7'	17
16.0'	27	6.5'	13

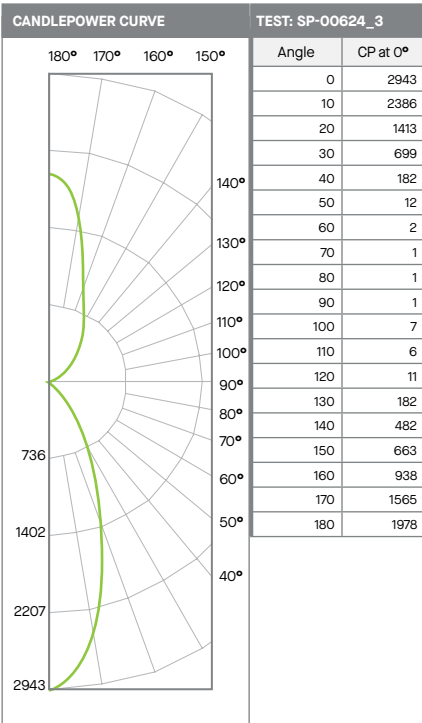
Delivered Lumens: 3414  
Luminaire Watts: 43.4  
LER: 79

CP @ 0° (Nadir): 6878  
Direct Beam Angle: 20.9°  
Indirect Beam Angle: 23.1°  
CRI: 83

Spacing Ratio: N/A  
Output Multipliers: 10L x 0.48, 13L x 0.65

### C0824UDXT-20LMDGL-20LMD-xxKEX-TSG-Soxxx

### 20Lx2 MEDIUM - 83 CRI



Beam Angle	Lumens	%
0-20	773	25%
0-40	1503	48%
0-60	1564	50%
0-90	1567	51%
90-120	18	1%
90-150	675	22%
90-180	1534	49%
<b>Total Lumens</b>	<b>3101</b>	<b>100%</b>

Mounting Height*	FC at Center	Diameter of Beam**	FC at Beam**
5.5'	97	4.0'	43
6.5'	70	4.7'	31
7.5'	52	5.4'	23
8.5'	41	6.1'	18
10.0'	29	7.2'	13
12.0'	20	8.6'	9
14.0'	15	10.1'	7
16.0'	11	11.5'	5

Mounting Distance*	FC at Center	Diameter of Beam**	FC at Beam**
4.0'	184	2.6'	83
5.0'	118	3.3'	53
6.0'	82	4.0'	37
8.0'	46	5.3'	21
10.0'	29	6.6'	13
12.0'	20	7.9'	9
14.0'	15	9.3'	7
16.0'	11	10.6'	5

Delivered Lumens: 3101  
Luminaire Watts: 43.4  
LER: 71

CP @ 0° (Nadir): 2943  
Direct Beam Angle: 39.6°  
Indirect Beam Angle: 36.6°  
CRI: 83

Spacing Ratio: N/A  
Output Multipliers: 10L x 0.48, 13L x 0.65

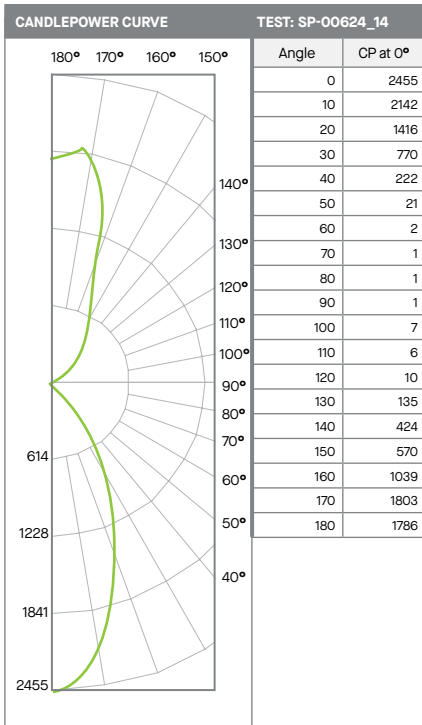
# 8" ROUND DIRECT / INDIRECT

## FOCUSED ILLUMINATION / PHOTOMETRIC DATA



C0824UDXT-20LWDGL-20LWD-xxKEX-TSG-Soxxx

20Lx2 WIDE - 83 CRI



ZONAL LUMENS		
0-20	712	23%
0-40	1501	48%
0-60	1578	51%
0-90	1581	51%
90-120	18	1%
90-150	599	19%
90-180	1522	49%
<b>Total Lumens</b>	<b>3103</b>	<b>100%</b>

SINGLE UNIT: PERFORMANCE INITIAL FOOTCANDLES AND BEAM ANGLE DIAMETERS			
Mounting Height*	FC at Center	Diameter of Beam**	FC at Beam**
5.5'	81	4.7'	34
6.5'	58	5.5'	25
7.5'	44	6.4'	18
8.5'	34	7.2'	14
10.0'	25	8.5'	10
12.0'	17	10.2'	7
14.0'	13	11.9'	5
16.0'	10	13.6'	4

SINGLE UNIT: PERFORMANCE INITIAL FOOTCANDLES AND BEAM ANGLE DIAMETERS			
Mounting Distance*	FC at Center	Diameter of Beam**	FC at Beam**
4.0'	153	3.1'	67
5.0'	98	3.8'	43
6.0'	68	4.6'	30
8.0'	38	6.2'	17
10.0'	25	7.7'	11
12.0'	17	9.2'	7
14.0'	13	10.8'	5
16.0'	10	12.3'	4

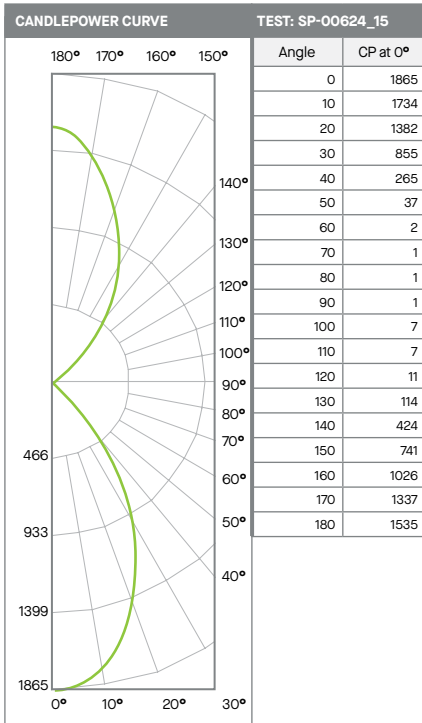
Delivered Lumens: 3103  
Luminaire Watts: 43.4  
LER: 71

CP @ 0° (Nadir): 2455  
Direct Beam Angle: 46.0°  
Indirect Beam Angle: 42.1°  
CRI: 83

Spacing Ratio: N/A  
Output Multipliers: 10L x 0.48, 13L x 0.65

C0824UDXT-20LXWGL-20LXW-xxKEX-TSG-Soxxx

20Lx2 XTRA WIDE - 83 CRI



ZONAL LUMENS		
0-20	611	20%
0-40	1483	48%
0-60	1594	52%
0-90	1597	52%
90-120	19	1%
90-150	612	20%
90-180	1479	48%
<b>Total Lumens</b>	<b>3076</b>	<b>100%</b>

SINGLE UNIT: PERFORMANCE INITIAL FOOTCANDLES AND BEAM ANGLE DIAMETERS			
Mounting Height*	FC at Center	Diameter of Beam**	FC at Beam**
5.5'	62	6.2'	23
6.5'	44	7.3'	17
7.5'	33	8.4'	13
8.5'	26	9.6'	10
10.0'	19	11.2'	7
12.0'	13	13.5'	5
14.0'	10	15.7'	4
16.0'	7	18.0'	3

SINGLE UNIT: PERFORMANCE INITIAL FOOTCANDLES AND BEAM ANGLE DIAMETERS			
Mounting Distance*	FC at Center	Diameter of Beam**	FC at Beam**
4.0'	117	4.4'	45
5.0'	75	5.6'	29
6.0'	52	6.7'	20
8.0'	29	8.9'	11
10.0'	19	11.1'	7
12.0'	13	13.3'	5
14.0'	10	15.6'	4
16.0'	7	17.8'	3

Delivered Lumens: 3076  
Luminaire Watts: 43.4  
LER: 71

CP @ 0° (Nadir): 1865  
Direct Beam Angle: 58.7°  
Indirect Beam Angle: 58.1°  
CRI: 83

Spacing Ratio: N/A  
Output Multipliers: 10L x 0.48, 13L x 0.65