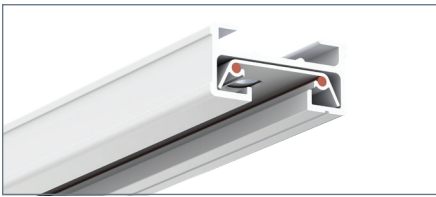




**BET - SINGLE CIRCUIT TRACK**  
SURFACE / SUSPENDED TRACK & ACCESSORIES - 120V ONLY



**BET TRACK**

Track / Power Distribution System suitable for retail, commercial and residential use. Compatible with a wide selection of BET single circuit track lighting fixtures. Ships with one BET41 end cap.

**BET02WH**

2' Track Matte White

**BET04WH**

4' Track Matte White

**BET06WH**

6' Track Matte White

**BET08WH**

8' Track Matte White

**BET02BK**

2' Track Matte Black

**BET04BK**

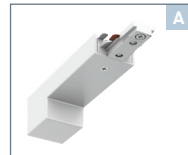
4' Track Matte Black

**BET06BK**

6' Track Matte Black

**BET08BK**

8' Track Matte Black



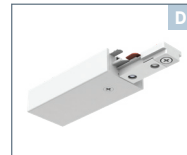
**CONDUIT END FEED**  
Surface conduit wiring. Accepts 3/8" or 1/2" (trade size) electrical fittings.

**BET13WH**

Conduit End Feed White

**BET13BK**

Conduit End Feed Black



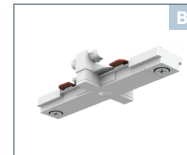
**TOP ACCESS END FEED**  
Direct wiring through the ceiling with end feed in suspension.

**BET11WH**

Top Access End Feed White

**BET11BK**

Top Access End Feed Black



**MINI "I" CONNECTOR**  
Connects two track sections. Low profile design for a clean continuous run.

**BET21WH**

Mini "I" Connector White

**BET21BK**

Mini "I" Connector Black



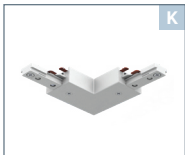
**END CAP**  
Covers end of track section. One included with each BET track continuous run.

**BET41WH**

End Cap White

**BET41BK**

End Cap Black



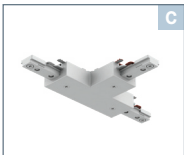
**"L" CONNECTOR**  
Connects two track sections in a L configuration Left or right. Can be internally adjusted 180°

**BET34WH**

"L" Connector White

**BET34BK**

"L" Connector Black



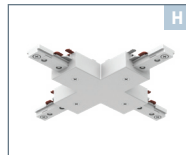
**"T" CONNECTOR**  
Connects three track sections in a T configuration. Adjustable for right or left applications.

**BET40WH**

"T" Connector White

**BET40BK**

"T" Connector Black



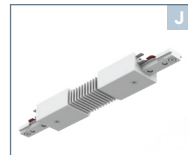
**"X" CONNECTOR**  
Connects four track sections in an X configuration. Factory wired for two separate 90° runs. Can be field wired for one run.

**BET38WH**

"X" Connector White

**BET38BK**

"X" Connector Black



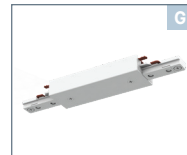
**FLEXIBLE CONNECTOR**  
Connects two track sections up to 90° left, right, up or down.

**BET92WH**

Flexible Connector White

**BET92BK**

Flexible Connector Black



**LONG CONNECTOR**  
Connects two track sections. Can be used as a feed point.

**BET14WH**

Long Connector White

**BET14BK**

Long Connector Black



**FLOATING CANOPY**  
Wiring through a junction box. Can be located anywhere along the track. Comes with one BT41 end cap.

**BET90WH**

Floating Canopy White

**BET90BK**

Floating Canopy Black



**LINE VOLTAGE MONO-POINT**

**BET70WH**

Mono Point Canopy White

**BET70BK**

Mono Point Canopy Black



**CURRENT LIMITING SINGLE CIRCUIT END FEED**

End feed with Current Limiting device. 2 Amps, other amperage upon request

**BET11CLWH-2A**

End Feed White

**BET11CLBK-2A**

End Feed Black



**THREAD ROD MOUNTING KIT**  
For 1/4" IPS Thread

**BET10WH**

Thread Rod White

**BET10BK**

Thread Rod Black



**STEM ASSEMBLIES**  
Thin 1/4" IPS Stems with Hardware to Connect to Track

**TPM24WH**

24" Stems White

**TPM24BK**

24" Stems Black

**TPM36WH**

36" Stems White

**TPM36BK**

36" Stems Black

\*Field Cuttable



**T-BAR HANGER CLIPS**  
Fits into channel in back of track: may be spaced to 4ft. Slide-on Type T-bar mounting clip.

**BET12S**

T-Bar Hanger



**T-BAR HANGER CLIPS**  
Fits into channel in back of track: may be spaced to 4ft. **Deep tile** [3/16"] T-bar mounting clip.

**BET12SD**

Deep T-Bar Hanger



**COVER PLATE**  
Square Cover Plate with the threaded center access hole. Includes ground washer, threaded nipple, and nut. For use with Spectrum part numbers: BET11WH, BET11BK Top End Feed and when used as feed points: BET34WH, BET34BK, BET40WH, BET40BK, BET38WH, BET38BK or BET14WH, BET14BK

**BET61WH**

Cover Plate White

**BET61BK**

Cover Plate Black



**PLUG ADAPTOR**

Grounded Outlet. Integral on/off switch, track polarity indicator. Max. 5 Amp capacity. Not UL Listed.

**BET33WH** Plug Adaptor White

**BET33BK** Plug Adaptor Black



# BET - SINGLE CIRCUIT TRACK

SURFACE / SUSPENDED TRACK SYSTEM CONFIGURATION

