

8" ROUND DIRECT / ADJUSTABLE INDIRECT ACCENTUATOR SERIES



C0816ADJUXT - WALL MOUNT

APPLICATION

8" round x 16" high 8" diameter series direct / indirect cylinder luminaire with adjustable tilt indirect (uplight) component.

FEATURES

Spectrum's Cylinder series provides traditional architectural style with high performance and energy efficient illumination. Rugged design with flexible mounting, finish and LED options make these extremely versatile fixtures. Quick change LED module with interchangeable optics for job site flexibility and fixture upgrade. Uplight LED module may be tilted up to 20° from vertical and locked.

FINISH

Multi-stage polyester powder-coat process applied on our dedicated paint lines. See mounting and color pages for standard finishes. All exposed materials are chromate pretreated to resist corrosion.

ELECTRONICS

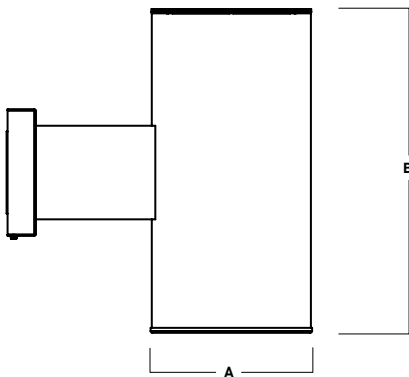
LED system features Xicato LED module with proprietary phosphor technology that provides consistent stable color with CCT control of +/- 100K over life of the light engine. Base CRI is 83 with 2-step MacAdam Ellipse binning. High CRI is 98 with 1 x 2-step MacAdam Ellipse binning. Variety of electronic 120V/277V and dimming drivers. 1 or 2 circuit operation.

CONSTRUCTION

Fabricated seamless aluminum fixture housing. Silicone gasket seals optical chamber. Specular primary optical reflectors provide high efficiency illumination. Impact resistant tempered glass lenses. Stainless steel hardware with galvanized steel brackets to resist corrosion. Trim formed from .063 thick high purity aluminum and finished to specification.

CODE COMPLIANCE

BAA compliant. ETL certified to meet US and Canadian standards. Suitable for dry or damp locations. Wet Location Option. Manufactured and tested to UL standards No. 1598/8750.



A	B
8.0 203.2 mm	16.0 406.4 mm

Fixture Weight: 24.5 lbs

LUMENS / WATTAGE DATA				
PART NUMBER	SOURCE LUMENS	DELIVERED LUMENS ²	SYSTEM WATTS ³	LPW
C0816ADJUXT10Lx2	2000	1645	18	90
C0816ADJUXT13Lx2	2600	2216	26	85
C0816ADJUXT20Lx2	4000	3410	43	79

SERIES	UPLIGHT ⁴		DOWNLIGHT		CCT	DRIVER / DIMMING ⁶	OPTIONS ⁷	TRIM	MOUNTING ¹⁰	FINISH ¹¹
C0816ADJUXT	LUMENS ¹	OPTICS	LUMENS ¹	OPTICS	83 CRI	EX Electronic Driver, 120V/277V DS10X 10%, 0-10V, 120V/277V D010X 1%, 0-10V, 120V/277V DS2W1 ELV/MLV, 120V	WL Wet Location FS Fuse Holder and Fuse 2CIR 2 Circuit	TSG Semi Diffuse Low Iridescent Clear TCY Same Color as Cylinder TCC Custom Color	WM3 Wall Mount 3" Extension WM5 Wall Mount 5" Extension	MW¹² Matte White MB¹² Matte Black PT¹² Platinum Silver CC Custom Color
	10L 1000 Lm	XN⁵ 11° ND 23° MD 37°	10L 1000 Lm	XN⁵ 12° ND 22° MD 39°	27K 2700K 30K 3000K 35K 3500K 40K 4000K					
	13L 1300 Lm	WD 42° XW 58°	13L 1300 Lm	WD 46° XW 57°	98 CRI ⁵ 27HK 2700K 30HK 3000K 35HK 3500K 40HK 4000K					
	20L 2000 Lm		20L 2000 Lm							
								LENS GL⁸ Clear Glass Lens SO⁹ Micro Prism Solite™ Lens FG Frosted Glass Lens	EMERGENCY BATTERY OPTIONS EMRM 7W Remote EM EMEN 7W Remote with Enclosure	

EXAMPLE: C0816ADJUXT10LND20LWD35KEX/TSGSO/WM5/MW

NOTES:
 1 Nominal Source Lumens at Any CCT 2 Nominal Delivered Lumens at 83 CRI at Any CCT with WD-GL, WD-TSG-SO 3 At 83 CRI 4 1/4" Clear Glass Only 5 13L Max/XN not Available with 98 CRI Option 6 Contact Factory for Additional Options 7 See Product Options Page for Details 8 Standard Lens for All Indirect and Direct: XN, ND 9 Standard Lens for All Direct: MD, WD, XW 10 See Mounting Page for Details on Components and Finishes 11 Reference Color Sheet Located on Product Webpage for Full List of Available Colors/Consult Factory for Special Finishes 12 Standard Finishes



PROJECT: _____
 TYPE: _____



Dimensions and values shown are nominal. Spectrum Lighting continually works to improve products and reserves the right to make changes which may alter the performance or appearance of products.

8" ROUND DIRECT / ADJUSTABLE INDIRECT

ACCENTUATOR SERIES / FIXTURE OPTIONS



STANDARD FINISHES

MW
MATTE WHITE



MB
MATTE BLACK

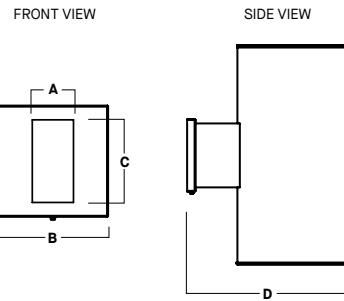


PT
PLATINUM SILVER



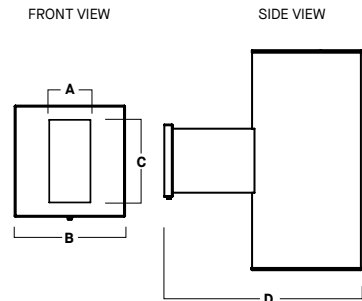
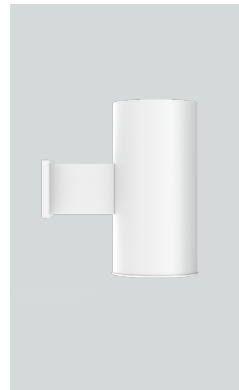
WALL MOUNT DETAIL

WM3
WALL MOUNT 3" EXTENSION



A	B	C	D
2.4	6.4	4.7	11.7
61.0 mm	162.6 mm	119.4 mm	297.2 mm

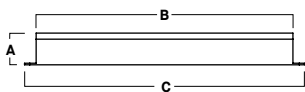
WM5
WALL MOUNT 5" EXTENSION



A	B	C	D
2.4	6.4	4.7	14.5
61.0 mm	162.6 mm	119.4 mm	368.3 mm

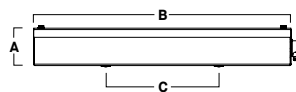
EMERGENCY BATTERY OPTIONS

EMRM* - 7W REMOTE EMERGENCY BATTERY
(50' MAX)



A	B	C
1.3	12.6	13.0

EMEN* - 7W REMOTE EMERGENCY BATTERY
WITH ENCLOSURE (50' MAX)



A	B	C
2.0	17.0	6.2

*OTHER EM BATTERY SIZES AVAILABLE, CONSULT FACTORY

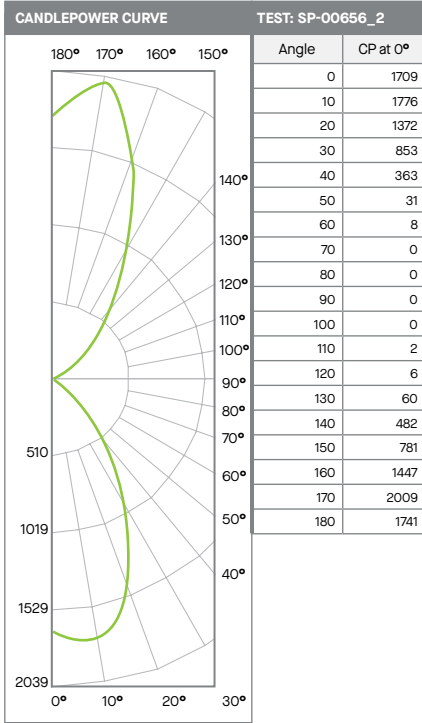
8" ROUND DIRECT / ADJUSTABLE INDIRECT

ACCENTUATOR SERIES / PHOTOMETRIC DATA



C0816ADJXT-20LWDGL-20LWD-xxK-EX-TSG-SO

20Lx2 WIDE - 83 CRI



Beam Angle	Lumens	%
0-20	617	18%
0-40	1501	44%
0-60	1634	48%
0-90	1636	48%
90-120	6	0%
90-150	620	18%
90-180	1773	52%
Total Lumens	3410	100%

Delivered Lumens: 3410
Luminaire Watts: 43.4
LER: 79

Mounting Height*	FC at Center	Diameter of Beam**	FC at Beam**
5.5'	56	6.0'	22
6.5'	40	7.1'	16
7.5'	30	8.2'	12
8.5'	24	9.3'	9
10.0'	17	11.0'	7
12.0'	12	13.2'	5
14.0'	9	15.4'	3
16.0'	7	17.6'	3

* From aperture to horizontal surface below.
** At IESNA defined Beam Angle, to 50% Max. CP.

Spacing Ratio: N/A
Output Multipliers: 13L x 0.65

Mounting Height*	FC at Center	Diameter of Beam**	FC at Beam**
4.0'	107	4.6'	40
5.0'	68	5.8'	26
6.0'	47	6.9'	18
8.0'	27	9.2'	10
10.0'	17	11.5'	6
12.0'	12	13.9'	4
14.0'	9	16.2'	3
16.0'	7	18.5'	3

* From aperture to horizontal surface below.
** At IESNA defined Beam Angle, to 50% Max. CP.