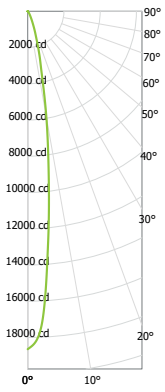


TSRA31 21L 35K XN E1 BET xx

CANDLEPOWER CURVE
TEST SP-15009



Delivered Lumens: 2192
Luminaire Watts: 20
LER: 109.60

INTENSITY
CANDELA
0° AZIMUTH

0°	
0°	18650
5°	12891
15°	2506
25°	508
35°	134
45°	45
55°	9
90°	1

ZONAL LUMENS

0° - 10°	1027	47%
0° - 20°	1774	81%
0° - 30°	2037	93%
0° - 40°	2131	97%
0° - 60°	2180	99%
0° - 80°	2183	100%
0° - 90°	2184	100%
Total	2192	100%

SINGLE UNIT: PERFORMANCE
HORIZONTAL FOOTCANDLES
INITIAL DOWNLIGHT ONLY

Mounting Distance	FC at Beam Center	Diameter at Beam Angle	FC at Beam Edge
6.5'	441 fc	1.6'	216 fc
7.5'	332 fc	1.9'	162 fc
8.5'	258 fc	2.1'	126 fc
10.0'	186 fc	2.5'	91 fc
12.0'	130 fc	3.0'	63 fc
14.0'	95 fc	3.5'	46 fc
16.0'	73 fc	4.0'	36 fc
20.0'	47 fc	5.0'	23 fc

MULTIPLE UNITS: PERFORMANCE
80/50/20% REFLECTANCES
HORIZONTAL FOOTCANDLES AND WATTS/SQ FT

Ceiling Height	Fixture Spacing	RCR 6		RCR 8	
		FC +	W/Sq. Ft.	FC +	W/Sq. Ft.
18'	3'	225	2.21	211	2.19
22'	4'	138	1.36	130	1.35
26'	5'	71	0.70	88	0.91
Delivered Illuminance Rating: (DIR)		102 FC per W/Sq. Ft.		96 FC per W/Sq. Ft.	
1' Suspension Length to luminous aperture Square rooms used for multiple units: RCR 6: Length & Width = Ceiling Ht. - 3.5' x 1.66 RCR 8: Length & Width = Ceiling Ht. - 3.5' x 1.25 + Average Initial Footcandles at 2.5' Above Floor					

CP at 0° (Nadir): 18650

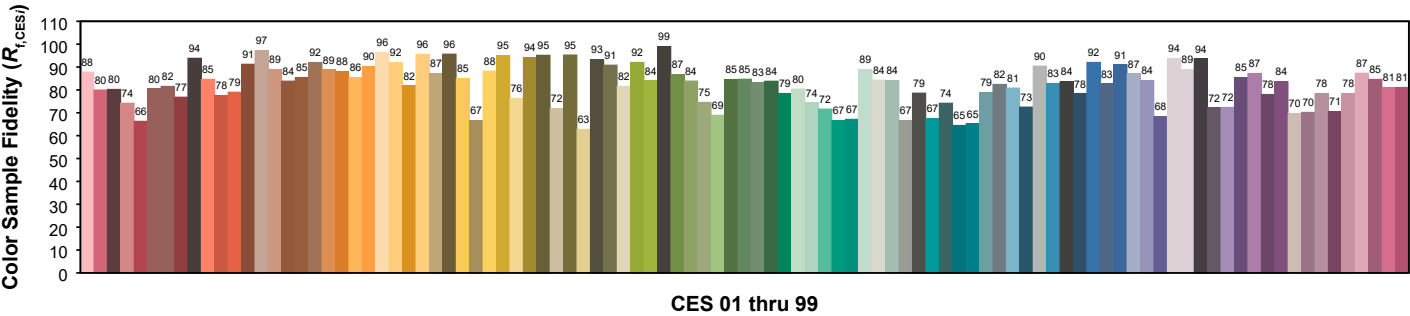
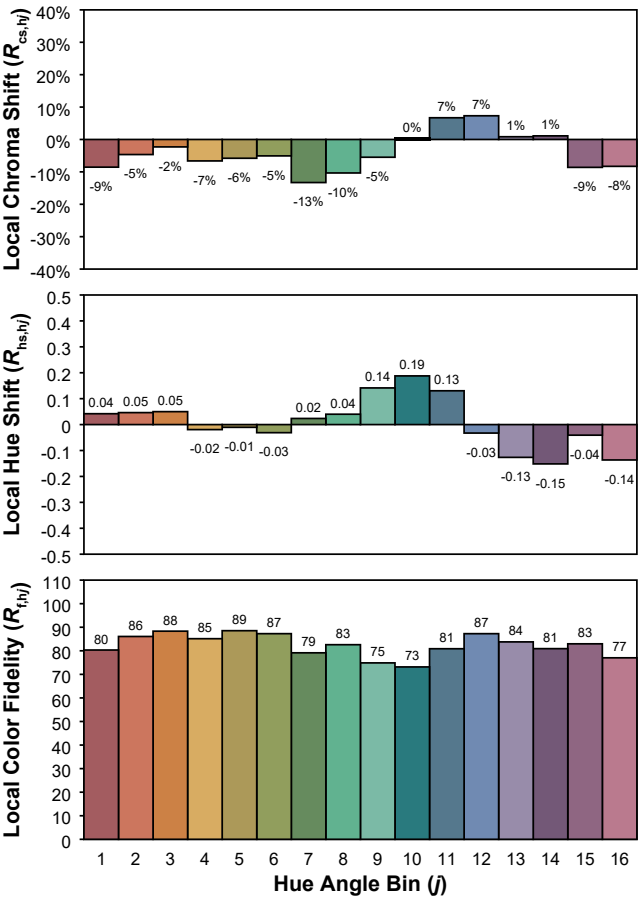
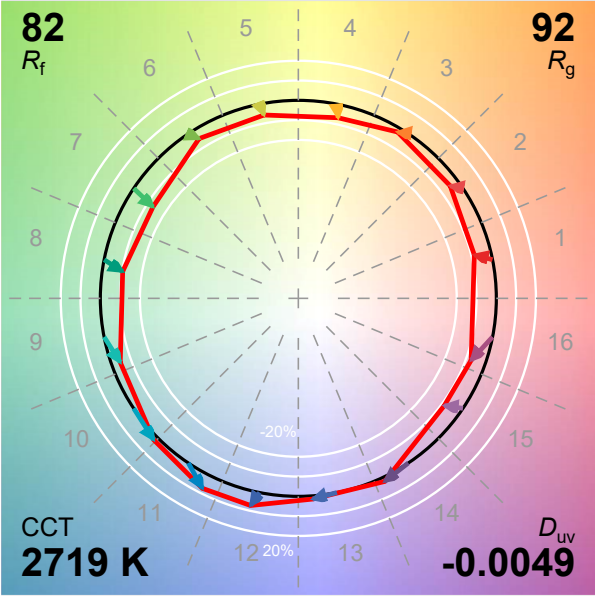
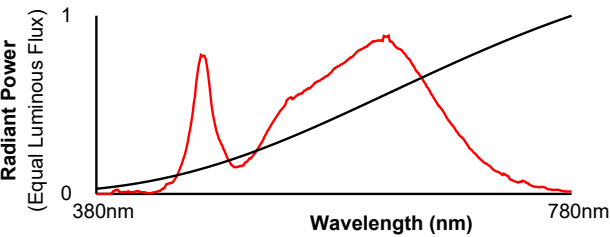
Beam Angle: 14°
Spacing Ratio: 0.25
Melanopic Ratio 0.57

CCT Multiplier: 30K x .93

IES TM-30-18 Color Rendition Report

Manufacturer: Spectrum Lighting

Model: SP-15009 ~ TSRA31 21L 35K XN E1 BET xx



Luminous Flux:	1945 lm
Radiant Flux:	7 Wrad
Electrical Power:	20 W
Efficacy:	97 lm/W
Melanopic Flux:	1103 mel lm
Melanopic Ratio:	0.57
CCT:	2719K
xy Coordinates:	0.445, 0.394
u'v' Coordinates:	0.26, 0.519
Delta u'v':	-0.0049

CIE u'v' (1976)

