

12" ROUND DIRECT GENERAL ILLUMINATION



C1216GV - WALL MOUNT

APPLICATION

12" round x 16" high pendant for auditorium and area lighting.

FEATURES

Architectural high performance LED Cylinder luminaire. Designed to illuminate auditoriums, houses of worship and other spaces where LED color quality and control are required. This series offers .01% dim to black as well as DMX, ELV and DALI dimming. Rugged design with flexible mounting, finish and LED options make these extremely versatile fixtures.

FINISH

Multi-stage polyester powder-coat process applied on our dedicated paint lines. See mounting and color pages for standard finishes. All exposed materials are chromate pretreated to resist corrosion.

ELECTRONICS

GV LED system features high brightness white Samsung LED's. 3-step MacAdam Ellipse binning. Standard CRI: 85+. Higher CRI, R9 and custom LED configurations are available; consult factory. Variety of electronic 120V/277V and dimming drivers.

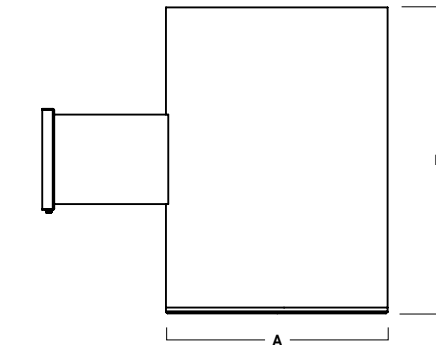
DMX controls available.

CONSTRUCTION

Fabricated seamless aluminum fixture housing. Specular primary optical reflectors provide high efficiency illumination. Stainless steel hardware with galvanized steel brackets to resist corrosion. One piece reflector trim spun from .063 thick high purity aluminum and finished to specification.

CODE COMPLIANCE

BAA compliant. ETL certified to meet US and Canadian standards. Suitable for dry or damp locations. Wet Location Option. Manufactured and tested to UL standards No. 1598/8750.



A	B
11.7 297.2 mm	16.1 408.9 mm

LUMENS / WATTAGE DATA				
PART NUMBER	SOURCE LUMENS ¹	DELIVERED LUMENS ²	SYSTEM WATTS	LPW
C1216GV15L	1500	1041	10	104
C1216GV27L	2700	1818	18	101
C1216GV37L	3700	2666	26	103
C1216GV55L	5500	3927	39	101

SERIES	LUMENS ¹	CCT	DRIVER / DIMMING ³	OPTIONS ⁶	TRIM	MOUNTING ¹⁰	FINISH ¹²	
C1216GV	15L 1500 Lm	27K 2700K	EX Electronic Driver, 120V/277V	FS Fuse Holder and Fuse WL ⁷ Wet Location	TSG ⁸ Semi Diffuse Low Iridescent Clear	WM3 Wall Mount 3" Extension	MW ¹³ Matte White MB ¹³ Matte Black PT ¹³ Platinum Silver CC Custom Color	
	27L 2700 Lm	30K 3000K	DS10X 10%, 0-10V, 120V/277V		TCY Same Color as Cylinder			
	37L 3700 Lm	35K 3500K	DO10X 1%, 0-10V, 120V/277V		TCC Custom Color	LENS		EMERGENCY BATTERY OPTIONS
	55L 5500 Lm	40K 4000K	DS2WI ELV / MLV, 120V		DLTE1 ⁴ Lutron 2-Wire Forward Phase (MLV), 120V	SO ⁹ Micro Prism Solite™ Lens		EMIT ¹¹ 7W Emergency Battery Test Switch
		50K 5000K	DL3EX ⁴ 1%, Lutron® EcoSystem® Fade, 120V/277V	FG Frosted Glass Lens	EMRM 7W Remote EM			
			EDO1X 0.1%, eldoLED 120V/277V					
			DALIX DALI Control					
			DMXS ⁵ DMX Standard Configuration					
			DMXC ⁵ DMX Non-Standard Custom					

EXAMPLE: C1216GV37L35KDO10X/TSGSO/WM3/MW

NOTES:
¹ Nominal Source Lumens at 35K ² Nominal Delivered Lumens at 35K with TSG-SO ³ Contact Factory for Additional Options ⁴ 37L Max ⁵ Contact Factory ⁶ See Product Options Page For Details ⁷ Lenses Required
⁸ Standard Finish ⁹ Standard Lens ¹⁰ See Mounting Page for Details on Components and Finishes ¹¹ EMIT Up to 37L ¹² Reference Color Sheet Located on Product Webpage for Full List of Available Colors ¹³ Standard Finishes



PROJECT: _____
 TYPE: _____



Dimensions and values shown are nominal. Spectrum Lighting continually works to improve products and reserves the right to make changes which may alter the performance or appearance of products.

12" ROUND DIRECT

GENERAL ILLUMINATION / FIXTURE OPTIONS



STANDARD FINISHES

MW
MATTE WHITE



MB
MATTE BLACK



PT
PLATINUM SILVER

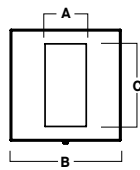


WALL MOUNT DETAIL

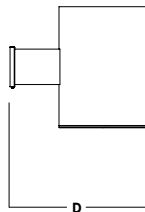
WM3
WALL MOUNT 3" EXTENSION



FRONT VIEW

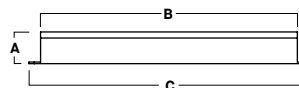


SIDE VIEW



A	B	C	D
2.4	6.4	4.7	18.2
61.0 mm	162.6 mm	119.4 mm	462.3 mm

EMRM* - 7W REMOTE EMERGENCY BATTERY
(50' MAX)



A	B	C
1.3	12.6	13.0

*OTHER EM BATTERY SIZES AVAILABLE, CONSULT FACTORY

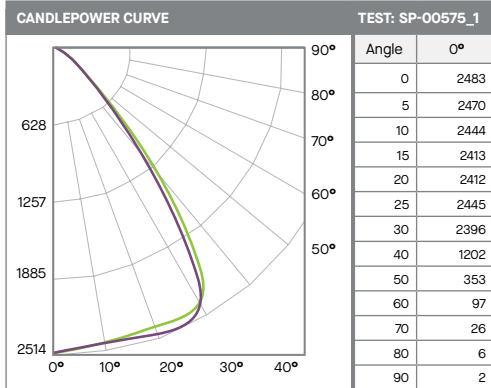
12" ROUND DIRECT

GENERAL ILLUMINATION / PHOTOMETRIC DATA



C12xxGV-55L35K-EX-TSG-SO

55L - 85 CRI



ZONAL LUMENS

0-10	236	6%
0-20	931	24%
0-30	2071	53%
0-40	3190	81%
0-60	3853	98%
0-80	3923	100%
0-90	3927	100%
Total Lumens	3927	100%

SINGLE UNIT: PERFORMANCE
INITIAL FOOTCANDLES AND BEAM ANGLE DIAMETERS

Mounting Height*	FC at Center	Diameter of Beam**	FC at Beam**
5.5'	82	7.7'	28
6.5'	59	9.1'	20
7.5'	44	10.5'	15
8.5'	34	11.9'	12
10.0'	25	14.0'	8
12.0'	17	16.8'	6
14.0'	13	19.6'	4
16.0'	10	22.4'	3

* From aperture to horizontal surface below.
** At IESNA defined Beam Angle, to 50% Max. CP.

Green: 0-180
Purple: 45-225

Delivered Lumens: 3927 CP @ 0° (Nadir): 2483
Luminaire Watts: 39 Beam Angle: 70°
LER: 101 CRI: 84

Spacing Ratio: 1.32
Output Multipliers: 15L x 0.27, 27L x 0.49, 37L x 0.67