

# 8" ROUND ADJUSTABLE ACCENT ACCENTUATOR SERIES



## CO808XT - CEILING MOUNT

### APPLICATION

8" round x 8" high cylinder luminaire for accent, decorative and general illumination. Unique biaxial trim adjustable for accent lighting.

### FEATURES

Biaxial adjustable trim tilts down 20 degrees and rotates 360 degrees for optimal aiming. Spectrum's Cylinder series provides traditional architectural style with high performance and energy efficient illumination. Rugged design with flexible mounting, finish and LED options make these extremely versatile fixtures. Quick change LED module with interchangeable optics for job site flexibility and fixture upgrade.

### FINISH

Multi-stage polyester powder-coat process applied on our dedicated paint lines. See mounting and color pages for standard finishes. All exposed materials are chromate pre-treated to resist corrosion.

### ELECTRONICS

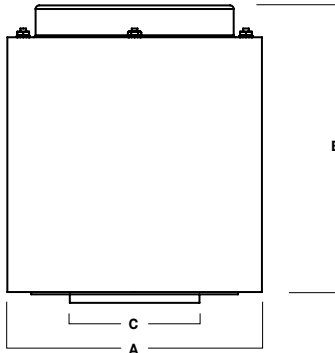
LED system features Xicato LED module with proprietary phosphor technology that provides consistent stable color with CCT control of +/- 100K over life of the light engine. Base CRI is 83 with 2-step MacAdam Ellipse binning. High CRI is 98 with 1 x 2-step MacAdam Ellipse binning. Variety of electronic 120V/277V and dimming drivers.

### CONSTRUCTION

Fabricated seamless aluminum fixture housing. Passive machined aluminum heatsink. Die-cast tilt down gimbal ring and optics bezel. Impact resistant tempered glass lenses. Stainless steel hardware. Finished to specification.

### CODE COMPLIANCE

BAA compliant. ETL certified to meet US and Canadian standards. Suitable for dry or damp locations. Manufactured and tested to UL standards No. 1598/8750.



A	B	C
8.0	9.0	4.1
203.2 mm	228.6 mm	104.1 mm

Fixture Weight: 14.5 lbs

LUMENS / WATTAGE DATA				
PART NUMBER	SOURCE LUMENS	DELIVERED LUMENS <sup>2</sup>	SYSTEM WATTS <sup>1</sup>	LPW
CO808XT10L	1000	899	9.1	99
CO808XT13L	1300	1211	13.0	93
CO808XT20L	2000	1863	21.7	86
CO808XT30L	3000	2794	32.6	86

SERIES	LUMENS <sup>1</sup>	CCT	OPTICS	DRIVER / DIMMING <sup>6</sup>	OPTIONS <sup>7</sup>	TRIM	MOUNTING <sup>9</sup>	FINISH <sup>12</sup>		
CO808XT	10L	1000 Lm	83 CRI	XN <sup>5</sup> 16°	EX Electronic Driver, 120V/277V	FS Fuse Holder and Fuse	TCY Same Color as Cylinder	HM <sup>10</sup> Hang Straight	MW <sup>13</sup> Matte White	
	13L	1300 Lm	27K 2700K							ND 20°
	20L	2000 Lm	30K 3000K	MD 21°	DO10X 1%, 0-10V, 120V/277V		AT <sup>10</sup> Hang Straight All Thread	PT <sup>13</sup> Platinum Silver		
	30L	3000 Lm	35K 3500K	WD 40°						
			40K 4000K				CD3X <sup>10/11</sup> Cord Cable Mount			
			98 CRI <sup>4</sup>					SM Surface Mount		
			27HK 2700K				LENS		EMERGENCY BATTERY OPTIONS	
			30HK 3000K				NL No Lens	EMCR 10W Canopy Mounted EM		
			35HK 3500K				GL <sup>8</sup> Clear Glass Lens	EMRM 7W Remote EM		
			40HK 4000K				SO Micro Prism Solite™ Lens	EMEN 7W Remote with Enclosure		

**EXAMPLE:** CO808XT20L30KMDEX/TCYSO/PM36/MW

#### NOTES:

1 Nominal Source Lumens At Any CCT 2 Nominal Delivered Lumens at 83 CRI at Any CCT with ND-GL 3 At 83 CRI 4 20L Max 5 13L Max/XN not Available with 98 CRI Option 6 Contact Factory for Additional Options 7 See Product Options Page for Details 8 Standard Lens 9 See Mounting Page for Details on Components and Finishes 10 Specify Length in Inches: See Mounting Page for Available Lengths 11 EMxxx Option Requires 2 Cords 12 Reference Color Sheet Located on Product Webpage for Full List of Available Colors 13 Standard Finishes



PROJECT: \_\_\_\_\_  
TYPE: \_\_\_\_\_



Dimensions and values shown are nominal. Spectrum Lighting continually works to improve products and reserves the right to make changes which may alter the performance or appearance of products.

# 8" ROUND ADJUSTABLE ACCENT

## ACCENTUATOR SERIES / FIXTURE OPTIONS



### STANDARD FINISHES

**MW**  
MATTE WHITE



**MB**  
MATTE BLACK

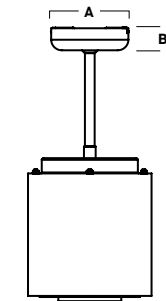


**PT**  
PLATINUM SILVER



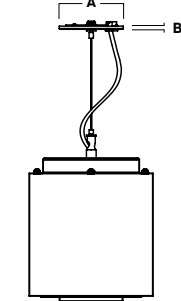
### MOUNTING TYPES

**HM / PM / AT**  
HANG STRAIGHT / PENDANT / ALL THREAD



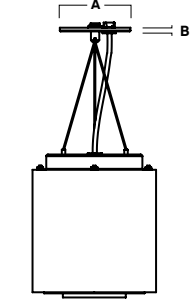
A	B
5.0	1.5
127.0 mm	38.1 mm

**CD**  
CORD / CABLE MOUNT



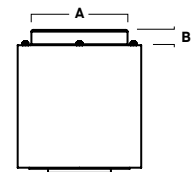
A	B
5.0	.25
127.0 mm	6.4 mm

**CD3X**  
CORD / CABLE MOUNT



A	B
5.0	0.25
127.0 mm	6.4 mm

**SM**  
SURFACE MOUNT



A	B
6.2	1.0
157.5 mm	25.4 mm

# STANDARD MOUNTING & ACCESSORIES

SOME OPTIONS NOT AVAILABLE ON ALL FIXTURES, CONSULT SPECIFICATION SHEETS. SEE INDIVIDUAL SPECIFICATION SHEETS OR CONSULT FACTORY FOR ADDITIONAL INFORMATION. NOTE: THIS IS TYPICAL OF CYLINDERS SPECIFICATION FOR PENDANT MOUNTING. INDIVIDUAL FIXTURES OR PROJECTS MAY HAVE SPECIALIZED REQUIREMENTS.



## MOUNTING TYPES

<p><b>HM*</b> HANG STRAIGHT 45° SWIVEL 5/8" OD STEM - 3/8" IP</p> <p>ORDER: <b>HM</b> (Length) SPECIFY LENGTH: <b>HM3</b> - 3"    <b>HM24</b> - 24" <b>HM6</b> - 6"    <b>HM36</b> - 36" <b>HM12</b> - 12"    <b>HM48</b> - 48" <b>HM18</b> - 18"    <b>HM72</b> - 72" <b>HMLC(XX)</b> Custom Length (Specify in Inches)</p>	<p><b>PM*</b> RIGID PENDANT MOUNT RIGID 5/8" OD STEM - 3/8" IP</p> <p>ORDER: <b>PM</b> (Length) SPECIFY LENGTH: <b>PM3</b> - 3"    <b>PM24</b> - 24" <b>PM6</b> - 6"    <b>PM36</b> - 36" <b>PM12</b> - 12"    <b>PM48</b> - 48" <b>PM18</b> - 18"    <b>PM72</b> - 72" <b>PMLC(XX)</b> Custom Length (Specify in Inches)</p>	<p><b>AT**</b> HANG STRAIGHT ALL THREAD 45° SWIVEL 5/8" OD STEM - 1/4" IP</p> <p>ORDER: <b>AT</b> (Length) SPECIFY LENGTH: <b>AT12</b> - 12" <b>AT24</b> - 24" <b>AT36</b> - 36"</p>	<p><b>CD</b> CORD / CABLE MOUNT SJ CORD WITH 1/16 SS CABLE</p> <p>ORDER: <b>CD</b> (Length) SPECIFY LENGTH: <b>CD36</b> - 36" <b>CD72</b> - 72" <b>CD144</b> - 144" <b>CDLC(XX)</b> Custom Length (Specify in Inches)</p>	<p><b>CD3X</b> CORD / CABLE MOUNT SJ CORD WITH 1/16 SS CABLE</p> <p>ORDER: <b>CD</b> (Length) SPECIFY LENGTH: <b>CD36</b> - 36" <b>CD72</b> - 72" <b>CD144</b> - 144" <b>CDLC(XX)</b> Custom Length (Specify in Inches)</p>	<p><b>SM</b> SURFACE MOUNT WIRING COMPARTMENT / TOP HAT</p> <p>ORDER: <b>SM</b> TOP VIEW CANOPY 3.5</p> <p>KEY SLOTS MOUNT CANOPY TO WALL JUNCTION BOX. JUNCTION BOX IS COVERED.</p>
--	---	--	---	---	--

\*MAXIMUM ONE PIECE STEM LENGTH IS 72". \*\*MAXIMUM ONE PIECE STEM LENGTH IS 36". LONGER LENGTHS ARE POSSIBLE USING MULTIPLE STEMS AND COUPLERS.

## EMERGENCY BATTERY OPTIONS

**EMCR** - LARGE DRIVER CANOPY FOR 10W EMERGENCY BATTERY

## REMOTE EMERGENCY BATTERY OPTIONS

<p><b>EMRM*</b> - 7W REMOTE EMERGENCY BATTERY (50' MAX)</p> <table border="1"> <thead> <tr> <th>A</th> <th>B</th> <th>C</th> </tr> </thead> <tbody> <tr> <td>1.3</td> <td>12.6</td> <td>13.0</td> </tr> </tbody> </table>	A	B	C	1.3	12.6	13.0	<p><b>EMEN*</b> - 7W REMOTE EMERGENCY BATTERY WITH ENCLOSURE (50' MAX)</p> <table border="1"> <thead> <tr> <th>A</th> <th>B</th> <th>C</th> </tr> </thead> <tbody> <tr> <td>2.0</td> <td>17.0</td> <td>6.2</td> </tr> </tbody> </table>	A	B	C	2.0	17.0	6.2
A	B	C											
1.3	12.6	13.0											
A	B	C											
2.0	17.0	6.2											

\*OTHER EM BATTERY SIZES AVAILABLE, CONSULT FACTORY

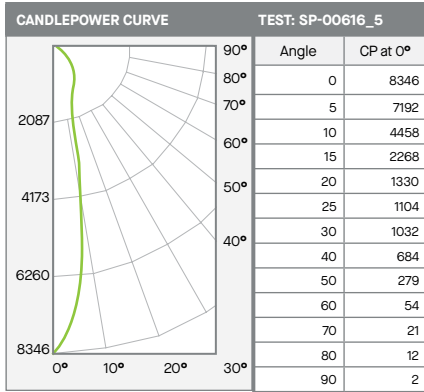
# 8" ROUND ADJUSTABLE ACCENT

## ACCENTUATOR SERIES / PHOTOMETRIC DATA



### C0808XT-30LxxK-NDEX-TCY-GLxxMW

### 30L NARROW - 83 CRI



Distance	Lumens	%
0-10	583	21%
0-20	1229	44%
0-30	1738	62%
0-40	2272	81%
0-60	2720	97%
0-80	2780	99%
0-90	2793	100%
Total Lumens	2794	100%

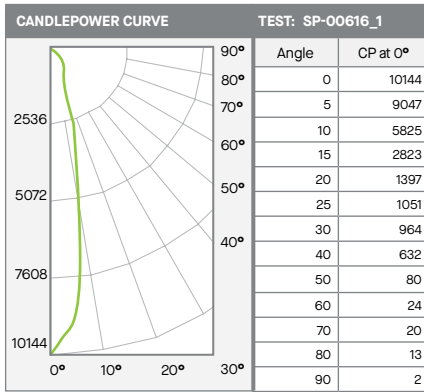
Mounting Height*	FC at Center	Diameter of Beam**	FC at Beam**
5.5'	276	2.0'	134
6.5'	198	2.3'	96
7.5'	148	2.7'	72
8.5'	116	3.0'	56
10.0'	83	3.6'	40
12.0'	58	4.3'	28
14.0'	43	5.0'	21
16.0'	33	5.7'	16

\* From aperture to horizontal surface below.  
\*\* At IESNA defined Beam Angle, to 50% Max. CP.

Delivered Lumens: 2794    CP @ 0° (Nadir): 8346    Spacing Ratio: 0.36  
 Luminaire Watts: 32.6    Beam Angle: 20.3°    Output Multipliers: 10L x 0.32, 13L x 0.43, 20L x 0.67  
 LER: 86    CRI: 83

### C0808XT-30LxxK-MDEX-TCY-GLxxMW

### 30L MEDIUM - 83 CRI



Distance	Lumens	%
0-10	724	26%
0-20	1511	53%
0-30	2008	71%
0-40	2515	89%
0-60	2764	98%
0-80	2814	99%
0-90	2828	100%
Total Lumens	2829	100%

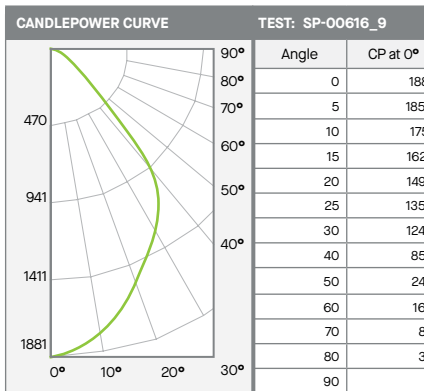
Mounting Height*	FC at Center	Diameter of Beam**	FC at Beam**
5.5'	335	2.0'	162
6.5'	240	2.4'	116
7.5'	180	2.8'	87
8.5'	140	3.2'	68
10.0'	101	3.7'	49
12.0'	70	4.5'	34
14.0'	52	5.2'	25
16.0'	40	6.0'	19

\* From aperture to horizontal surface below.  
\*\* At IESNA defined Beam Angle, to 50% Max. CP.

Delivered Lumens: 2829    CP @ 0° (Nadir): 10144    Spacing Ratio: 0.4  
 Luminaire Watts: 32.6    Beam Angle: 21.1°    Output Multipliers: 10L x 0.32, 13L x 0.43, 20L x 0.67  
 LER: 87    CRI: 83

### C0808XT-30LxxK-WDEX-TCY-GLxxMW

### 30L WIDE - 83 CRI



Distance	Lumens	%
0-10	171	6%
0-20	620	23%
0-30	1239	47%
0-40	1902	72%
0-60	2433	92%
0-80	2628	99%
0-90	2650	100%
Total Lumens	2652	100%

Mounting Height*	FC at Center	Diameter of Beam**	FC at Beam**
5.5'	62	4.3'	27
6.5'	45	5.1'	19
7.5'	33	5.9'	15
8.5'	26	6.6'	11
10.0'	19	7.8'	8
12.0'	13	9.4'	6
14.0'	10	10.9'	4
16.0'	7	12.5'	3

\* From aperture to horizontal surface below.  
\*\* At IESNA defined Beam Angle, to 50% Max. CP.

Delivered Lumens: 2652    CP @ 0° (Nadir): 1881    Spacing Ratio: 1.02  
 Luminaire Watts: 32.6    Beam Angle: 42.7°    Output Multipliers: 10L x 0.32, 13L x 0.43, 20L x 0.67  
 LER: 81    CRI: 83