



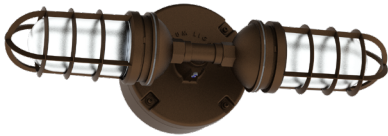
VAPOR TIGHT SERIES
DAMP / WET LOCATION
 SUBWAY LINE

PROJECT: _____

QUANTITY: _____ TYPE: _____



WJ1X2XT
 PT - Platinum Silver



WJ1X2XT
 BZ - Bronze



WJ1X2XT
 MW - Matte White



WJ1X2XT
 MB - Matte Black

| SERIES | LUMENS ¹ | CCT | DRIVER / DIMMING ² | ACCESSORIES ³ | GUARDS | MOUNTING | FINISH ⁵ | WET KIT |
|---------|----------------------------|--|---|---|---------------------|---------------------------------------|--|-----------------------|
| WJ1X2XT | 10L 1000 Lm 13L 1300 Lm | 27K 2700K 30K 3000K 35K 3500K 40K 4000K | EX DO10X Electronic Driver, 120V/277V 1%, 0-10V, 120V/277V | FJ1 ⁴ 3" Frosted Glass Enclosure FJ3 3" Prismatic Lamp Enclosure AMJ1 3" Amber Lamp Enclosure RDJ1 3" Red Lamp Enclosure GRJ1 3" Green Lamp Enclosure BLJ1 3" Blue Lamp Enclosure | CG1 Cast Wire Guard | CP106 Wall Mount with Driver in J-Box | MW ⁶ Matte White MB ⁶ Matte Black PT ⁶ Platinum Silver CC Custom Color | WLKA Wet Location Kit |

EXAMPLE: WJ1X2XT10L35KDO10X/FJ1/CG1/CP106/MW

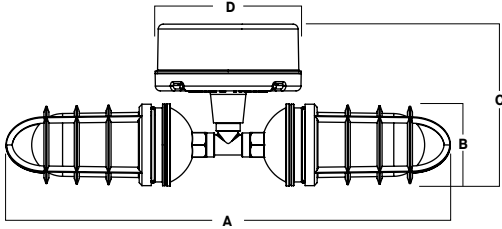
NOTES:
 1 Nominal Source Lumens at 35K 2 Contact Factory for Additional Options 3 Enclosure, Wire Guard Required - Choose One Option 4 Standard Enclosure
 5 Reference Color Sheet Located on Product Webpage for Full List of Available Colors/Consult Factory for Special Finishes 6 Standard Finishes





VAPOR TIGHT SERIES
DAMP / WET LOCATION
SUBWAY LINE

HOUSING DIMENSIONS



| A | B | C | D |
|----------|----------|----------|----------|
| 22.7 | 4.2 | 8.2 | 7.5 |
| 576.6 mm | 106.7 mm | 208.3 mm | 190.5 mm |

APPLICATION

The XT Series LED Vapor Tight series with T-fitting for twin fixture mount.

FEATURES

Spectrum Lighting's RLM Classics are reproductions of early American lighting fixtures reimaged with modern LED light sources and materials. The wide range of combinations for lamping, enclosures, and finishes allows for creative fixture specification and design. Frosted lamp enclosure (FJ1) is standard. A variety of colored lamp enclosures are available. LED module and driver are serviceable for future replacement.

FINISH

Multi-stage polyester powder-coat process applied on our dedicated paint lines. A wide variety of standard and custom finishes are available. All exposed materials are chromate pretreated to resist corrosion.

ELECTRONICS

LED system features Xicato LED module with proprietary phosphor technology that converts high brightness blue LEDs into uniform white light. Designed to provide consistent, stable color with CCT control of +/- 100K over life of the light engine. Base CRI is 80 with 90, 95 CRI and Vivid™ options. Variety of electronic 120v/277v and dimming drivers.

CONSTRUCTION

Fixture is constructed of spun and die-cast heavy gauge aluminum.

CODE COMPLIANCE

BAA Compliant. ETL/UL for damp locations. Optional Wet location. Manufactured and tested to UL standards No. 1598/8750.

