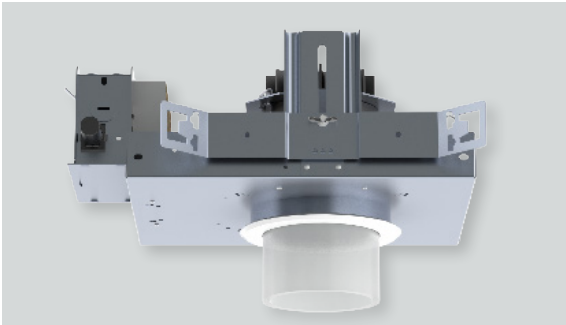




# 4" ROUND DOWNLIGHT / NON-IC

ILLUMITECH DECORATIVE / 4000 LUMENS



## RDFO4XT - DECORATIVE TRIM / NON-IC RATED

### APPLICATION

Illumitech decorative recessed series offer two lengths of decorative acrylic cylinder (FACY). Cylinder glows softly to create ambiance.

### FEATURES

Two-stage optical system with regressed Solite lens for smooth light distribution. Quick change LED module with interchangeable optics for job site adjustment and fixture maintenance. Shallow plenum design. Tool-less driver and j-box access. Posi-lock trim retention torsion springs.

### TRIM FINISH

Decorative cylinder is soft etched UV stabilized cast machined acrylic. Matte White flange is standard.

### ELECTRONICS

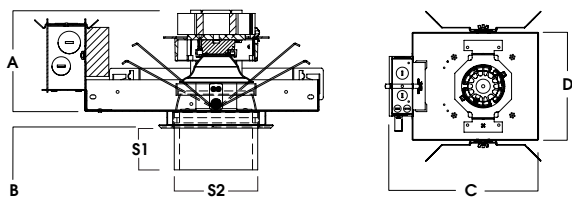
LED system features Xicato LED module with proprietary phosphor technology that provides consistent, stable color with CCT control of +/- 100K over life of the light engine. Base CRI is 83 with 2-step MacAdam Ellipse binning. High CRI is 98 with 1x2-step MacAdam Ellipse binning. Variety of electronic 120V/277V and dimming drivers.

### CONSTRUCTION

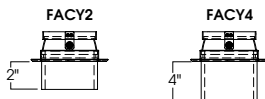
Housing/frame constructed of #20 ga. galvanized steel to resist corrosion. Self-Flanged one piece trim spun from 0.063" thick high purity aluminum and finished to specification.

### CODE COMPLIANCE

BAA Compliant. ETL certified to meet US and Canadian standards. Suitable for dry or damp locations. Manufactured and tested to UL standards No. 1598/8750.



A	B	C	D	TRIM	S1	S2	CUT OUT
10L-20L: 4.9	0.625	13.2	9.5	FACY2	2.0	4.0	4.7
30L-40L: 5.7	15.2 mm	335.3 mm	241.3 mm	FACY4	4.0	4.0	119.4 mm



WATTAGE TO LUMENS UPDATE					
CURRENT PART NUMBER EXAMPLE	PREVIOUS PART NUMBER EXAMPLE	SOURCE LUMENS <sup>1</sup>	DELIVERED LUMENS <sup>2</sup>	SYSTEM WATTS	LPW
RDFO4XT10L	RDFO4LEDX15W	1000	554	11.1	49.9
RDFO4XT13L	RDFO4LEDX20W	1300	746	15.0	49.7
RDFO4XT20L	RDFO4LEDX33W	2000	1148	23.7	48.4
RDFO4XT30L	RDFO4LEDX52W	3000	1722	34.6	49.8
RDFO4XT40L	N/A	4000	2210	39.9	55.4

SERIES	LUMENS <sup>1</sup>	CCT	OPTICS	DRIVER / VOLTAGE <sup>4</sup>	OPTIONS <sup>5</sup>	TRIM	COLOR	CAST ACRYLIC	TRIM OPTIONS		
RDFO4XT	83 CRI		<b>XN<sup>3</sup></b> 10° <b>ND</b> 27° <b>MD</b> 40° <b>WD</b> 45° <b>XW</b> 50°	<b>E_</b> Electronic Driver <b>DS10_</b> 10% 0-10V <b>DO10_</b> 1% 0-10V <b>DS2W1</b> 1% ELV/MLV, 120V <b>DLTE1</b> 1% Lutron® 2-Wire Forward Phase, 120V <b>DL3E_</b> 1% Lutron® EcoSystem®, Fade <b>EL10_</b> 1%, eldoLED <b>ED01_</b> 0.1%, eldoLED <b>DALI_</b> DALI Control	<b>1</b> 120V <b>2</b> 277V <b>BH27<sup>6</sup></b> 27" Solid Bars <b>H12</b> 12" - 24" Expandable Bars <b>H06</b> 6" - 12" Expandable Bars <b>CB24</b> 24" C-Channel Bars <b>EM</b> EM Battery Pack <b>FS</b> Fusing <b>EB</b> Black Housing <b>CR</b> Corrosion Resistant <b>PR<sup>7</sup></b> Deep Ceiling Extension <b>GR</b> Goof Ring <b>AMB</b> Anti Microbial Finish	<b>RD4FXTMWSO<sup>8</sup></b>	<b>FA</b> Frosted Clear	<b>CY2</b> 2" Deep Acrylic <b>CY4</b> 4" Deep Acrylic	<b>GS</b> Gasket <b>WL</b> Wet Location		
	10L	1000 Lm								27K	2700K
	13L	1300 Lm								30K	3000K
	20L	2000 Lm								35K	3500K
	30L	3000 Lm								40K	4000K
	40L	4000 Lm									
	98 CRI										
	10L	1000 Lm								27HK	2700K
	13L	1300 Lm								30HK	3000K
	20L	2000 Lm								35HK	3500K
30L	3000 Lm	40HK	4000K								

**EXAMPLE:** RDFO4XT13L35KMDE1/H12/RD4FXTMWSOFACY4

**NOTES:**  
 1 Nominal Source Lumens at Any CCT 2 Nominal Delivered Lumens 83CRI at Any CCT with MD-FACY4 3 XN 13L Max at 83 and 98 CRI 4 Contact Factory for Additional Options 5 See Product Options Page for Details  
 6 Standard Bar Hangers 7 Contact Factory 8 "F" Indicates Self-Flange Trim, Matte White Standard



PROJECT: \_\_\_\_\_  
 TYPE: \_\_\_\_\_



Dimensions and values shown are nominal. Spectrum Lighting continually works to improve products and reserves the right to make changes which may alter the performance or appearance of products.