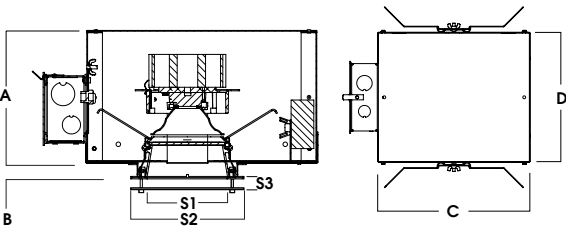




4" SQUARE DOWNLIGHT / IC RATED

ILLUMITECH DECORATIVE / 2000 LUMENS



A	B	C	D	TRIM	S1	S2	S3
6.4 162.6 mm	0.625 15.2 mm	10L-13L: 13.2 20L: 19.2	9.5 241.3 mm	1TFGSQ 1TCGSQ 1TFGSQOC 1TCGSQOC	3.9 99.1 mm	5.5 139.7 mm	1.0 25.4 mm

SDFI4XT - DECORATIVE TRIM / IC RATED

APPLICATION

Illumitech decorative recessed series offers four suspended glass elements. These create visual focus and ceiling brightness while functioning as a performance downlight.

FEATURES

Decorative glass tier suspended by four machined chrome standoffs. Glass is tempered and finished to a jewel like polish. Two-stage optical system for smooth light distribution and focus control. Quick change LED module with interchangeable optics for job site adjustment and fixture maintenance. Posi-lock trim retention torsion springs.

TRIM FINISH

A variety of architectural powdercoat and anodized finishes are available. Matte White flange is standard.

ELECTRONICS

LED system features Xicato LED module with proprietary phosphor technology that provides consistent, stable color with CCT control of +/- 100K over life of the light engine. Base CRI is 83 with 2-step MacAdam Ellipse binning. High CRI is 98 with 1x2-step MacAdam Ellipse binning. Variety of electronic 120V/277V and dimming drivers.

CONSTRUCTION

Self-Flanged one piece trim formed from high purity aluminum and finished to specification. Glass is .125 thick tempered edge polished and finished to specification.

CODE COMPLIANCE

BAA Compliant. Non-IC rated. ETL certified to meet US and Canadian standards. Suitable for dry or damp locations. Optional Wet location. Manufactured and tested to UL standards No. 1598/8750.

WATTAGE TO LUMENS UPDATE			
CURRENT PART NUMBER EXAMPLE	PREVIOUS PART NUMBER EXAMPLE	SOURCE LUMENS ¹	SYSTEM WATTS
SDFI4XT10L	SDFI4LEDX115W	1000	11.1
SDFI4XT13L	SDFI4LEDX120W	1300	15.0
SDFI4XT20L	SDFI4LEDX133W	2000	23.7

SERIES	LUMENS ¹	CCT	OPTICS	DRIVER / VOLTAGE ³	OPTIONS ⁴	TRIM	FINISH	TRIM OPTIONS			
SDFI4XT	83 CRI		XN ² 10° ND 27° MD 40° WD 45° XW 50°	E Electronic Driver DS10_ 10% 0-10V DO10_ 1% 0-10V DS2W1 1% ELV/MLV, 120V DLTE1 1% Lutron® 2-Wire Forward Phase, 120V DL3E_ 1% Lutron® EcoSystem®, Fade EL10_ 1% eldoLED ED01_ 0.1% eldoLED DALI_ DALI Control	1 120V 2 277V	SD4FXT ⁷	MW ⁸ Matte White MB Matte Black SC ⁹ Semi-Diffuse HZ ⁹ Haze Full Diffuse PT Platinum Silver BZ Bronze CH Charcoal AS Anodic Sapphire AM Anodic Malachite SN Sun Gold CO Copper Metallic GH Graphite AMB Anti Microbial Finish CC ¹⁰ Custom Color	SO Micro Prism Solite™ Lens GS Gasket WL Wet Location			
	10L	1000 Lm							27K	2700K	BH27 ⁵ 27" Solid Bars
	13L	1300 Lm							30K	3000K	H12 12" - 24" Expandable Bars
	20L	2000 Lm							35K	3500K	H06 6" - 12" Expandable Bars
									40K	4000K	CB24 24" C-Channel Bars
											EMRM Remote EM Battery Pack
	98 CRI				FS Fusing						
	10L	1000 Lm	27HK	2700K	EB Black Housing						
	13L	1300 Lm	30HK	3000K	CR Corrosion Resistant						
	20L	2000 Lm	35HK	3500K	PR ⁶ Deep Ceiling Extension						
	30L	3000 Lm	40HK	4000K	GR Goof Ring						
					CCEA Chicago Ceiling Plenum Rated						
				AMB Anti Microbial Finish							

EXAMPLE: SDFI4XT20L30KE1/BH27/CA0224XTMWSO1TFGSQOC

NOTES:
 1 Nominal Source Lumens at Any CCT 2 XN 13L Max at 83 and 98 CRI 3 Contact Factory for Additional Options 4 See Product Options Page for Details 5 Standard Bar Hangers 6 Contact Factory 7 "F" Indicates Self-Flange Trim, Matte White Standard 8 Standard Finish 9 Anodized Reflector with Matte White Flange 10 Contact Factory for Special Finishes



PROJECT: _____
 TYPE: _____



Dimensions and values shown are nominal. Spectrum Lighting continually works to improve products and reserves the right to make changes which may alter the performance or appearance of products.