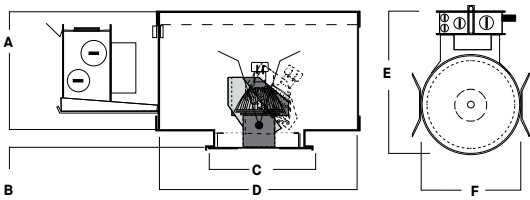
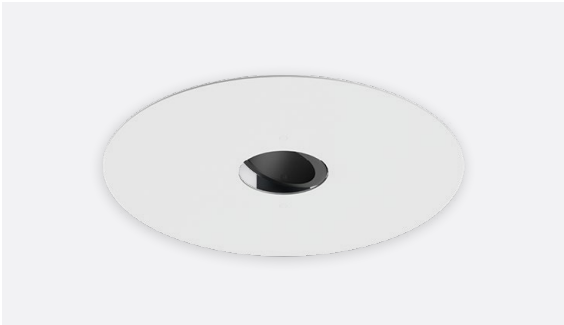


3.5" ROUND FLAT CEILING

PROJECT: _____
 QUANTITY: _____ TYPE: _____



A	B	C	D	E	F
4.7	0.7	4.5	8.0	12.0	8.0
120.6 mm	19.0 mm	114.3 mm	203.2 mm	304.8 mm	203.2 mm

Fixture Weight: 4.0 lbs

Ceiling Cutout: Ø 4.3

SGDG4X

APPLICATION

3.5" Versa light LED MR16 for flat trim installations.

FEATURES

Efficient reflector design optimized for MR16 LED lamps (sold by others). Versa light housing accepts variety of trims. Trim rotates 360° for easy alignment, tilts and locks to 45°. Integral 5/8" (0.625") plaster ring. Tool-less access for ease of maintenance. Multi-bar adjustable mounting brackets.

TRIM FINISH

Variety of powdercoat and anodized finishes available on trim.

ELECTRONICS

120V Electronic transformer is standard.

CONSTRUCTION

Frame constructed of 20 ga. aluminum. Trim fabricated from .063" aluminum and finished to specification.

CODE COMPLIANCE

ETL listed for damp locations. Manufactured and tested to UL Standard No. 1598.

PRODUCT SELECTOR GUIDE

SERIES	DIMMING	OPTIONS	BAR HANGERS	TRIM	FINISH	LENS
SGDG4X						

EXAMPLE

SGDG4X	E1		BH27	AR3200SAPH	MW	SO
--------	----	--	------	------------	----	----

HOUSING

SERIES	DIMMING	OPTIONS
SGDG4X	E1 Electronic, 120V	CR Corrosion Resistant TR Top Relamping Option

MOUNTING OPTIONS

BAR HANGERS
BH27 27" Solid Bars H12 12" - 24" Expandable Bars CB24 24" C-Channel Bars

TRIM OPTIONS

TRIM	FINISH	LENS
AR3200 SAPH Pinhole, 2.0" SASL Slot Aperture SALW Wall Wash SAWL Wet Location NAPH Fixed Lamp Pinhole NAWL Fixed Lamp Wet Location	MW Matte White MB Matte Black	GL Clear Glass Lens SO Micro Prism Solite™ Lens NL No Lens

