



**4" ROUND DIRECT  
DAMP LOCATION  
GAMMA SERIES**

PROJECT: \_\_\_\_\_  
 QUANTITY: \_\_\_\_\_ TYPE: \_\_\_\_\_



CF0406PC



CF0412PC



CF0418PC

SERIES	LUMENS <sup>1</sup>		CCT	OPTICS		DRIVER / DIMMING <sup>2</sup>		LENS	MOUNTING <sup>3</sup>		FINISH <sup>4</sup>			
CF0406PC 4" x 6"	10L	700 Lm	80 CRI	ND	20°	EX	Electronic Driver, 120V/277V 1%, 0-10V, 120V/277V	NL	WM	Wall Mount	MW <sup>5</sup>	Matte White		
	15L	1050 Lm	27K	2700K	MD			26°					CL	Clear Glass Lens
	20L	1450 Lm	30K	3000K	WD			51°					SO	
CF0412PC 4" x 12"			35K	3500K	XW	61°	DS2W1	ELV/MLV, 120V	HL	Hex Louver	PT <sup>5</sup>	Platinum Silver		
			40K	4000K							CC	Custom Color		
	CF0418PC 4" x 18"			90 CRI							EMERGENCY BATTERY OPTIONS			
			27HK	2700K					EMRM	7W Remote EM				
			30HK	3000K					EMEN	7W Remote with Enclosure				
			35HK	3500K										
		40HK	4000K											

EXAMPLE: CF0406PC15L35KNDEX/CL/WM/MW

**NOTES:**  
 1 Nominal Delivered Lumens at 3500K 2 Consult Factory for Additional Options 3 See Mounting Page for Details on Components and Finishes  
 4 Reference Color Sheet Located on Product Webpage for Full List of Available Colors 5 Standard Finishes





# 4" ROUND DIRECT DAMP LOCATION GAMMA SERIES

LUMENS / WATTAGE DATA			
PART NUMBER	DELIVERED LUMENS <sup>1</sup>	SYSTEM WATTS	LPW
CF0412PC 10L	736	6.5	113
CF0412PC 15L	1089	9.5	115
CF0412PC 20L	1471	12.9	114

<sup>1</sup> Nominal Delivered Lumens at 3500K, 80 CRI, Medium Optic with Clear Lens

### APPLICATION

The Gamma Family of Cylinders are a robust offering of point source LED luminaires featuring high efficacies, an assortment of optical control, and installation flexibility, which make them suitable for a wide range of commercial and institutional applications.

### ELECTRONICS

Solid-state light engine available in various color temperatures and lumen outputs. Specifiable in 2700K, 3000K, 3500K, 4000K in CRI 80 (Typ.), or 2700K, 3000K, 3500K, 4000K in CRI 90 (Typ.), color accuracy  $\leq 3$  SDCM. Selection of integral electronic constant current, dimmable drivers available, power factor  $> 0.9$  (Typ). Driver and light engine are field serviceable for future replacement or upgrades. Emergency battery options provide 7W for 90 minutes.

### CONSTRUCTION

Seamless cylinder body machined from 6063 extruded aluminum. Trim and top cap are die-cast aluminum. Twist and lock trim design for no visible fasteners. Passive aluminum heatsink optimized for LED life and performance. Specular reflectors offered in variety of beam spreads. Lens accessory options available (maximum of 2).

### MOUNTING

Mounting bracket for direct installation with 4" octagonal junction boxes. Single-piece, seamless die-cast aluminum wall arm. See mounting page for additional information. Contact factory for special installation circumstances.

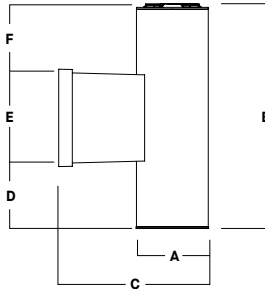
### FINISH

Multi-stage polyester powder-coat process applied on our in-house finishing department. Custom colors also available (contact factory with RAL#). Wall arm will match cylinder finish specification.

### CODE COMPLIANCE

ETL Listed. Suitable for dry or damp locations with operation in ambient conditions up to 25°C. 5 year limited warranty on all components. Proudly designed and manufactured in Massachusetts, USA.

## DIMENSIONS



Dimensioned with **CF0412PC**

SERIES	A	B	C	D	E	F
CF0406PC	4.0	6.4	8.3	0.4	5.4	0.6
CF0412PC	4.0	12.4	8.3	3.4	5.4	3.6
CF0418PC	4.0	18.4	8.3	6.4	5.4	6.6

## SERIES SIZES

CF0406PC



CF0412PC



CF0418PC



## STANDARD FINISHES SHOWN WITH CF0412PC

MW  
Matte White



MB  
Matte Black

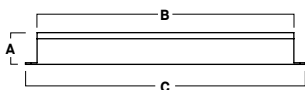


PT  
Platinum Silver



## EMERGENCY BATTERY OPTIONS

**EMRM\*** - 7W REMOTE EMERGENCY BATTERY  
(50' MAX)



A	B	C
1.3	12.6	13.0

**EMEN\*** - 7W REMOTE EMERGENCY BATTERY  
WITH ENCLOSURE (50' MAX)



A	B	C
2.0	17.0	6.2

\*OTHER EM BATTERY SIZES AVAILABLE. CONSULT FACTORY





# 4" ROUND DIRECT

## GAMMA SERIES / PHOTOMETRIC DATA

### CF04XXPC 20L 35K ND XX CL XX

CANDLEPOWER CURVE TEST SP-01069	INTENSITY CANDELA 0° AZIMUTH	ZONAL LUMENS	SINGLE UNIT: PERFORMANCE DIRECT FOOTCANDLES BASED ON DOWNLIGHT ONLY				MULTIPLE UNITS: PERFORMANCE 80/50/20% REFLECTANCES INITIAL FOOTCANDLES AND WATTS PER SQUARE FOOT					
			Mounting Height AFF	FC at Center on Floor	Beam Diameter	FC at Beam Edge	Ceiling Height	Fixture Spacing	RCR 4		RCR 6	
	0°	0° - 10° 486 34%	8'	112 fc	2.7'	53 fc	14'	3'	155	1.46	127	1.30
	0°	0° - 20° 945 66%	10'	71 fc	3.4'	34 fc	18'	4'	77	0.72	91	0.92
	5°	0° - 30° 1240 86%	12'	50 fc	4.1'	24 fc	22'	5'	58	0.55	54	0.55
	15°	0° - 40° 1408 98%	14'	36 fc	4.8'	17 fc	Delivered Illuminance Rating: (DIR)					
	25°	0° - 60° 1432 100%	16'	28 fc	5.5'	13 fc	106 FC per W/Sq. Ft. 98 FC per W/Sq. Ft.					
	35°	0° - 80° 1437 100%	20'	18 fc	6.8'	9 fc	2' Suspension Length to luminous aperture Square rooms used for multiple units: RCR 4: Length & Width = Ceiling Ht. - 4.5' x 2.50 RCR 6: Length & Width = Ceiling Ht. - 4.5' x 1.66 * Average Footcandles at 2.5' Above Floor					
	45°	0° - 90° 1439 100%	24'	12 fc	8.2'	6 fc						
	55°	0° - 90° 1439 100%	28'	9 fc	9.5'	4 fc						
	90°	Total 1439 100%										

Delivered Lumens: 1439  
Luminaire Watts: 12.9  
LER: 111.55

CP at 0° (Nadir): 7143  
CRI: 80

Beam Angle: 20°  
Spacing Ratio: 0.33

Lumen Multiplier: 10L x 0.5, 15L x 0.74  
CCT Multiplier: 27K x 0.972, 30K x 0.981, 40K x 1.04  
27HK x 0.78, 30HK x 0.82

### CF04XXPC 20L 35K MD XX CL XX

CANDLEPOWER CURVE TEST SP-01068	INTENSITY CANDELA 0° AZIMUTH	ZONAL LUMENS	SINGLE UNIT: PERFORMANCE DIRECT FOOTCANDLES BASED ON DOWNLIGHT ONLY				MULTIPLE UNITS: PERFORMANCE 80/50/20% REFLECTANCES INITIAL FOOTCANDLES AND WATTS PER SQUARE FOOT					
			Mounting Height AFF	FC at Center on Floor	Beam Diameter	FC at Beam Edge	Ceiling Height	Fixture Spacing	RCR 3		RCR 5	
	0°	0° - 10° 371 25%	8'	74 fc	3.7'	34 fc	14'	4'	93	0.82	91	0.89
	0°	0° - 20° 909 62%	10'	48 fc	4.6'	22 fc	18'	6''	46	0.41	45	0.44
	5°	0° - 30° 1260 86%	12'	33 fc	5.6'	15 fc	22'	8'''	21	0.19	17	0.17
	15°	0° - 40° 1438 98%	14'	24 fc	6.5'	11 fc	Delivered Illuminance Rating: (DIR)					
	25°	0° - 60° 1463 99%	16'	19 fc	7.4'	9 fc	112 FC per W/Sq. Ft. 102 FC per W/Sq. Ft.					
	35°	0° - 80° 1469 100%	20'	12 fc	9.3'	5 fc	2' Suspension Length to luminous aperture Square rooms used for multiple units: RCR 3: Length & Width = Ceiling Ht. - 4.5' x 3.33 RCR 5: Length & Width = Ceiling Ht. - 4.5' x 2.00 * Average Footcandles at 2.5' Above Floor ** Exceeds Spacing Ratio by 3% *** Exceeds Spacing Ratio by 6%					
	45°	0° - 90° 1471 100%	24'	8 fc	11.1'	4 fc						
	55°	0° - 90° 1471 100%	28'	6 fc	13.0'	3 fc						
	90°	Total 1471 100%										

Delivered Lumens: 1471  
Luminaire Watts: 12.9  
LER: 114.03

CP at 0° (Nadir): 4763  
CRI: 80

Beam Angle: 26°  
Spacing Ratio: 0.43

Lumen Multiplier: 10L x 0.5, 15L x 0.74  
CCT Multiplier: 27K x 0.972, 30K x 0.981, 40K x 1.04  
27HK x 0.78, 30HK x 0.82

### CF04XXPC 20L 35K WD XX CL XX

CANDLEPOWER CURVE TEST SP-01070	INTENSITY CANDELA 0° AZIMUTH	ZONAL LUMENS	SINGLE UNIT: PERFORMANCE DIRECT FOOTCANDLES BASED ON DOWNLIGHT ONLY				MULTIPLE UNITS: PERFORMANCE 80/50/20% REFLECTANCES INITIAL FOOTCANDLES AND WATTS PER SQUARE FOOT					
			Mounting Height AFF	FC at Center on Floor	Beam Diameter	FC at Beam Edge	Ceiling Height	Fixture Spacing	RCR 2		RCR 4	
	0°	0° - 10° 207 14%	6'	59 fc	5.7'	22 fc	14'	6'	43	0.37	38	0.37
	0°	0° - 20° 716 48%	8'	33 fc	7.7'	12 fc	18'	8'	21	0.18	19	0.18
	5°	0° - 30° 1220 82%	10'	21 fc	9.6'	8 fc	22'	10'	16	0.14	11	0.11
	15°	0° - 40° 1457 98%	12'	15 fc	11.5'	5 fc	Delivered Illuminance Rating: (DIR)					
	25°	0° - 60° 1483 100%	14'	11 fc	13.4'	4 fc	118 FC per W/Sq. Ft. 105 FC per W/Sq. Ft.					
	35°	0° - 80° 1487 100%	16'	8 fc	15.3'	3 fc	2' Suspension Length to luminous aperture Square rooms used for multiple units: RCR 2: Length & Width = Ceiling Ht. - 4.5' x 5.00 RCR 4: Length & Width = Ceiling Ht. - 4.5' x 2.50 * Average Footcandles at 2.5' Above Floor					
	45°	0° - 90° 1488 100%	20'	5 fc	19.2'	2 fc						
	55°	0° - 90° 1488 100%	24'	4 fc	23.0'	1 fc						
	90°	Total 1488 100%										

Delivered Lumens: 1488  
Luminaire Watts: 12.9  
LER: 115.35

CP at 0° (Nadir): 2121  
CRI: 80

Beam Angle: 51°  
Spacing Ratio: 0.81

Lumen Multiplier: 10L x 0.5, 15L x 0.74  
CCT Multiplier: 27K x 0.972, 30K x 0.981, 40K x 1.04  
27HK x 0.78, 30HK x 0.82





# 4" ROUND DIRECT

## GAMMA SERIES / PHOTOMETRIC DATA

CF04XXPC 20L 35K XW XX CL XX

CANDLEPOWER CURVE TEST SP-01071	INTENSITY CANDELA 0° AZIMUTH	ZONAL LUMENS	SINGLE UNIT: PERFORMANCE DIRECT FOOTCANDLES BASED ON DOWNLIGHT ONLY				MULTIPLE UNITS: PERFORMANCE 80/50/20% REFLECTANCES INITIAL FOOTCANDLES AND WATTS PER SQUARE FOOT											
			Mounting Height AFF	FC at Center on Floor	Beam Diameter	FC at Beam Edge	Ceiling Height	Fixture Spacing	RCR 2		RCR 4							
	0°																	
	0° - 10°	159	11%															
	0° - 20°	596	41%	6'	47 fc	7.1'	15 fc	14'	8'	24	0.21	21	0.21					
	5°	1656		8'	26 fc	9.5'	8 fc	16'	10'	16	0.14	14	0.14					
	0° - 30°	1150	78%	10'	17 fc	11.8'	5 fc	22'	12'	10	0.08	6	0.06					
	15°	1558		12'	12 fc	14.2'	4 fc	Delivered Illuminance Rating: (DIR)		116 FC per W/Sq. Ft.		102 FC per W/Sq. Ft.						
	0° - 40°	1432	98%	14'	9 fc	16.6'	3 fc	2' Suspension Length to luminous aperture Square rooms used for multiple units: RCR 2: Length & Width = Ceiling Ht. - 4.5' x 5.00 RCR 4: Length & Width = Ceiling Ht. - 4.5' x 2.50 * Average Footcandles at 2.5' Above Floor										
	0° - 60°	1462	100%	16'	7 fc	19.0'	2 fc											
	25°	1243		20'	4 fc	23.7'	1 fc											
	35°	447		24'	3 fc	28.4'	1 fc											
	0° - 80°	1466	100%															
	0° - 90°	1468	100%															
Total	1468	100%																

Delivered Lumens: 1468  
Luminaire Watts: 12.9  
LER: 113.80

CP at 0° (Nadir): 1678  
CRI: 80

Beam Angle: 61°  
Spacing Ratio: 0.98

Lumen Multiplier: 10L x 0.5, 15L x 0.74  
CCT Multiplier: 27K x 0.972, 30K x 0.981, 40K x 1.04  
27HK x 0.78, 30HK x 0.82

