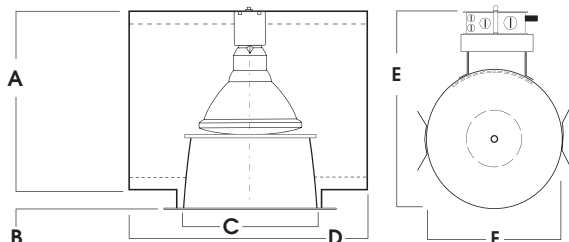
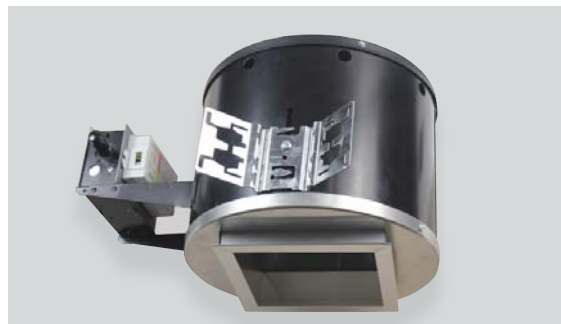


6" SQUARE DOWNLIGHT PAR30/ PAR38 LAMP

150 WATT MAX INCANDESCENT



A	B	C	D	E	F
8.5	0.6	6.0	11.5	16.0	11.5
215.9 mm	15.2 mm	152.4 mm	292.1 mm	406.4 mm	292.1 mm

SGD6SQIN

APPLICATION

6" square PAR30/ PAR38 downlight for incandescent lamps.

FEATURES

- Efficient trim design with a variety of lens options.
- Integral 5/8" (0.625) plaster ring.
- Maximum wattage label (MWL) for low wattage Incandescent or LED lamps.
- Tool-less ballast access.
- Multi-bar adjustable mounting brackets.

FINISH

Variety of powdercoat and anodized finishes available on trim.
Eco Black (EB) finish available on frame/ housing.

ELECTRONICS

120 Volt is standard. Use option T277 for 277V supply feed.

CONSTRUCTION

Frame constructed of 20 ga. aluminum.
Trim formed from .050 high purity aluminum and finished to specification.

LABELS

UL/ ETL Listed for Damp locations. Wet location available.
Manufactured and tested to UL Standard No. 1598.

Max Ceiling Thickness:	1.0 (25.4 mm)
Ceiling Cutout:	7.0 ² (177.8 mm) ²
Fixture Weight:	6.0 lbs

SERIES	OPTIONS	TRIM / FINISH	TRIM OPTIONS	FIXTURE LAMPING*												
SGD6SQIN- Spectrum Gold 6" Square	BH27 -27" Bar Hangers (Supplied)	AR0606-SG -Semi-Diffuse Low-Iridescent (Standard)	FG* -Frosted Glass	<table border="1"> <thead> <tr> <th>LAMP</th> <th>MAX. WATTAGE</th> </tr> </thead> <tbody> <tr> <td>PAR20</td> <td>50w</td> </tr> <tr> <td>PAR30</td> <td>75w</td> </tr> <tr> <td>R30</td> <td>100w</td> </tr> <tr> <td>PAR38</td> <td>150w</td> </tr> <tr> <td>R40</td> <td>150w</td> </tr> </tbody> </table> <p>*Medium Base</p>	LAMP	MAX. WATTAGE	PAR20	50w	PAR30	75w	R30	100w	PAR38	150w	R40	150w
	LAMP	MAX. WATTAGE														
PAR20	50w															
PAR30	75w															
R30	100w															
PAR38	150w															
R40	150w															
CB24 -C-Channel Bars	CCEA -Chicago Ceiling Plenum	GM -Corrugated Soft Glow	GL* -Clear Glass Lens													
CR -Corrosion Resistant	T277 -Step Down Transformer 277v to 120v	GO -Gold Alzak	GS -Gasket													
FS -Fuse Holder and Fuse	PR -Plaster Ring (Special Depth)	MB -Matte Black	SO* -Micro Prism Solite™ Lens													
MWL -Max Wattage Label (Specify Wattage)	EB -Eco Black Housing Finish	MW -Matte White	PG* -Prismatic (T73) Lens													
TBC -T-Bar Clips	TR -Top Relamping Option	PW -Pewter Alzak	SK* -Skytek™ Linear Lens													
		UM -Umber Alzak	LN -See Recessed Fixtures/ Lens Options for Lens, Louver and Filter Accessories													
		WE -Wheat Alzak	WL -Wet Location													
		BF -Black Flange														
		WF -White Flange														
		CC -Custom Color														
		AR0306-** -Finished as specified														
		Note: Polished Flange is Standard.	* Use AR0306 ** Trim with Lens Optics													

EXAMPLE: SGD6SQIN/ AR0606 SG

Dimensions shown are nominal. Spectrum Lighting is continually improving products and reserves the right to make changes that will not alter performance or appearance with or without written notice.



PROJECT:	TYPE:
CAT. NO.:	

