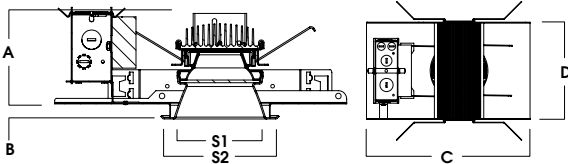
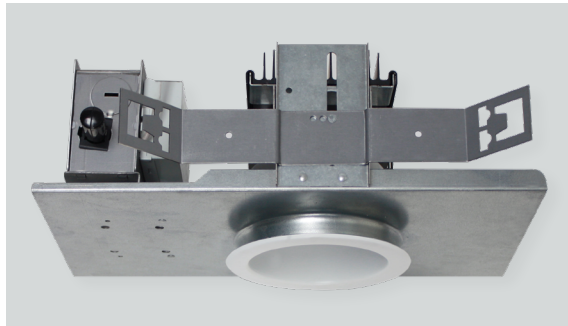
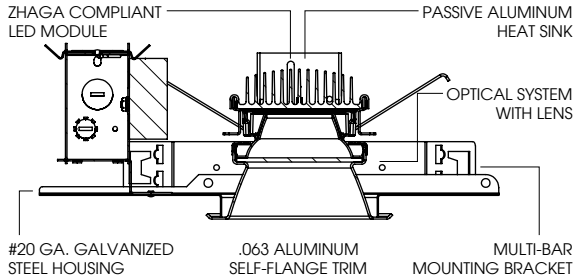


4" ROUND LED DOWNLIGHT

OS SERIES / 4500 LUMENS MAX



A	B	C	D	S1	S2
4.38	0.625	13.3	7.8	4.0	5.4
111.3 mm	15.9 mm	337.8 mm	198.1 mm	101.6 mm	137.2 mm

SGE4LEDOS - TRIM FLANGE / NON-IC RATED

APPLICATION

4" LED Recessed open aperture downlight for general downlighting.

FEATURES

Two-stage optical system for smooth light distribution. Zhaga International Standard LED module for ease of maintenance and replacement. Shallow plenum design. Tool-less LED module, driver and J-Box access. Multi-Bar mounting brackets. BH27 Standard mounting bars included. Posi-lock trim retention torsion springs. Integral 0.625" collar.

TRIM FINISH

A variety of architectural powdercoat and anodized finishes are available. Matte white flange is standard.

ELECTRONICS

LED module features high brightness white Osram LEDs. 3-step MacAdam Ellipse binning and CRI 84 minimum. Full range of electronic 120V/277V and dimming drivers.

CONSTRUCTION

Housing/frame constructed of #20 ga. galvanized steel to resist corrosion. Self-flanged one piece trim spun from 0.063" thick high purity aluminum and finished to specification. Passive machined aluminum heatsink.

CODE COMPLIANCE

BAA Compliant. Non-IC rated. ETL certified to meet US and Canadian standards. Suitable for dry or damp locations. Optional Wet location. LM79/LM80/TM21 data available. Manufactured and tested to UL standards No. 1598/8750.

WATTAGE TO LUMENS UPDATE

CURRENT PART NUMBER EXAMPLE	PREVIOUS PART NUMBER EXAMPLE	SOURCE LUMENS ¹	DELIVERED LUMENS ²	SYSTEM WATTS	LPW
SGE4LEDOS10L	SGE4LEDOS14W	1100	810	11	74
SGE4LEDOS15L	N/A	1500	1040	13	80
SGE4LEDOS20L	SGE4LEDOS25W	2000	1722	20	86
SGE4LEDOS30L	SGE4LEDOS35W	3000	2366	28	85
SGE4LEDOS45L	N/A	4500	3502	41	85

SERIES	LUMENS ¹	CCT	DRIVER / VOLTAGE ³	OPTIONS ⁴	TRIM	FINISH	TRIM OPTIONS		
SGE4LEDOS	10L	1100 Lm	27K 2700K	E_ Electronic Driver	1 120V 2 277V	AR4223OS	MW ⁶ Matte White MB Matte Black SG Semi-Diffuse HZ Haze Full Diffuse PT Platinum Silver BZ Bronze OB Oil Rubbed Bronze CH Charcoal AS Anodic Sapphire AN Anodic Natural AC Anodic Champagne AZ Anodic Bronze AK Anodic Black AM Anodic Malachite SN Sun Gold CO Copper Metallic GH Graphite CC ¹⁰ Custom Color		
	15L	1500 Lm	30K 3000K	DS10_ 10%, 0-10V				BH27 ⁵ 27" Solid Bars	SO ¹¹ Micro Prism Solite™ Lens
	20L	2000 Lm	35K 3500K	DO10_ 1%, 0-10V				H12 12" - 24" Expandable Bars	GL Clear Glass Lens
	30L	3000 Lm	40K 4000K	DS2W1 1%, ELV/MLV, 120V				H06 6" - 12" Expandable Bars	FG Frosted Glass Lens
	45L	4500 Lm		DS2W1 1%, ELV/MLV, 120V DLTE1 1% Lutron® 2-Wire Forward Phase, 120V DL3E_ 1% Lutron® EcoSystem®, Fade EL10_ 1%, eldoLED ED01_ 0.1%, eldoLED DALI_ DALI Control				CB24 24" C-Channel Bars FS Fusing EB Fixture Painted Black CR Corrosion Resistant PR ² Deep Ceiling Extension GR Goof Ring ZIG ⁷ ZigBee Module BLU ⁷ Bluetooth LE EM ⁸ 7W Emergency Battery Test Switch Remote AMB Anti-Microbial Finish	GS Gasket WL Wet Location PF ¹² Polished Flange AMB Anti-Microbial Finish

EXAMPLE: SGE4LEDOS20L35KE1/AR4223OSSGSO

NOTES:
 1 Nominal Source Lumens at 35K 2 Nominal Delivered Lumens at 35K with SG-SO 3 Contact Factory for Additional Options 4 See Product Options Page for Details 5 Standard Bar Hangers 6 Contact Factory
 7 Order DS101/2 When Specifying ZIG or BLU 8 Standard EM 9 Standard Finish 10 Contact Factory for Special Finishes 11 Standard Lens 12 Flange and Reflector Same Finish



PROJECT: _____
 TYPE: _____



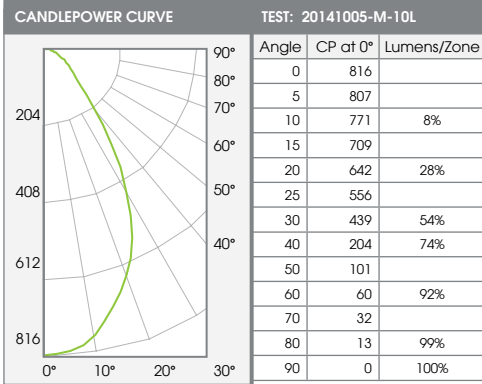
Dimensions and values shown are nominal. Spectrum Lighting continually works to improve products and reserves the right to make changes which may alter the performance or appearance of products.

4" ROUND LED DOWNLIGHT OS SERIES / PHOTOMETRIC DATA

recessed
fixtures



SGE4LEDOS10L35KE1-AR4223OSMWSO



Delivered Lumens: 976
Luminaire Watts: 14.4
LER: 68

CP @ 0° (Nadir): 816
Beam Angle: 62°
Spacing Ratio: 0.96

SINGLE UNIT: PERFORMANCE INITIAL FOOTCANDLES AND BEAM ANGLE DIAMETERS			
Mounting Height*	FC at Center	Diameter of Beam**	FC at Beam**
5.5'	27	6.6'	10
6.5'	19	7.8'	7
7.5'	15	9.0'	5
8.0'	13	9.6'	5
8.5'	11	10.2'	4
9.0'	10	10.8'	4
10.0'	8	12.0'	3
11.0'	7	13.2'	2

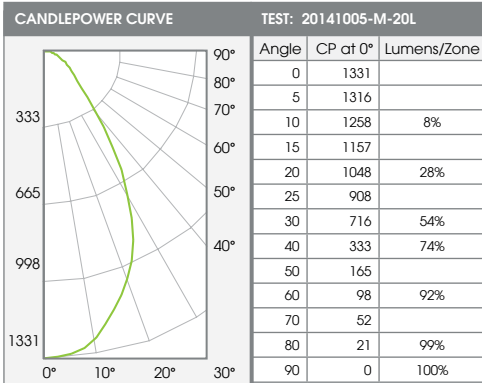
* From aperture to horizontal surface below.
** At IESNA defined Beam Angle, to 50% Max. CP.

MULTIPLE UNITS: PERFORMANCE 80/50/20% REFLECTANCES INITIAL FOOTCANDLES AND WATTS PER SQUARE FOOT					
Ceiling Height	Fixture Spacing	RCR 2: Large Room		RCR 4: Medium Room	
		FC*	W/Sq. Ft.	FC*	W/Sq. Ft.
8'	4'	52	0.79	50	0.90
	5'	37	0.56	37	0.68
9'	5'	34	0.51	36	0.64
	6'	23	0.35	28	0.51
10'	5'	30	0.46	27	0.48
	6'	26	0.40	22	0.40
11'	6'	24	0.36	21	0.38
	7'	18	0.27	16	0.29

Delivered Illuminance Rating: (DIR) 65 FC per W/Sq. Ft. 54 FC per W/Sq. Ft.
*Average Footcandles at 2.5' above floor.

CCT: 3500° K CRI: 84 CCT Output Factors: 40K 103%, 30K 95%, 27K 89% Multiplier for FC Values at 9W: 0.56

SGE4LEDOS20L35KE1-AR4223OSMWSO



Delivered Lumens: 1593
Luminaire Watts: 25.6
LER: 62

CP @ 0° (Nadir): 1331
Beam Angle: 62°
Spacing Ratio: 0.96

SINGLE UNIT: PERFORMANCE INITIAL FOOTCANDLES AND BEAM ANGLE DIAMETERS			
Mounting Height*	FC at Center	Diameter of Beam**	FC at Beam**
6.5'	32	7.8'	12
7.5'	24	9.0'	9
8.0'	21	9.6'	8
8.5'	18	10.2'	7
9.0'	16	10.8'	6
10.0'	13	12.0'	5
11.0'	11	13.2'	4
12.0'	9	14.4'	3

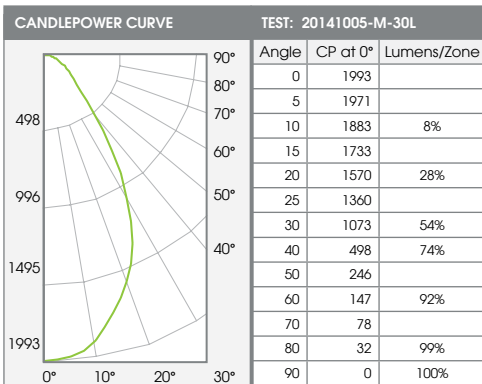
* From aperture to horizontal surface below.
** At IESNA defined Beam Angle, to 50% Max. CP.

MULTIPLE UNITS: PERFORMANCE 80/50/20% REFLECTANCES INITIAL FOOTCANDLES AND WATTS PER SQUARE FOOT					
Ceiling Height	Fixture Spacing	RCR 2: Large Room		RCR 4: Medium Room	
		FC*	W/Sq. Ft.	FC*	W/Sq. Ft.
9'	5'	55	0.90	58	1.14
	6'	38	0.63	46	0.90
10'	5'	49	0.81	44	0.85
	6'	43	0.71	36	0.71
11'	6'	40	0.65	34	0.67
	7'	29	0.48	27	0.52
12'	7'	28	0.45	27	0.54
	8'	24	0.39	21	0.40

Delivered Illuminance Rating: (DIR) 61 FC per W/Sq. Ft. 51 FC per W/Sq. Ft.
*Average Footcandles at 2.5' above floor.

CCT: 3500° K CRI: 84 CCT Output Factors: 40K 103%, 30K 95%, 27K 89%

SGE4LEDOS30L35KE1-AR4223OSMWSO



Delivered Lumens: 2385
Luminaire Watts: 35.1
LER: 68

CP @ 0° (Nadir): 1993
Beam Angle: 62°
Spacing Ratio: 0.96

SINGLE UNIT: PERFORMANCE INITIAL FOOTCANDLES AND BEAM ANGLE DIAMETERS			
Mounting Height*	FC at Center	Diameter of Beam**	FC at Beam**
7.5'	35	9.0'	13
8.0'	31	9.6'	11
8.5'	28	10.2'	10
9.0'	25	10.8'	9
10.0'	20	12.0'	7
11.0'	16	13.2'	6
12.0'	14	14.4'	5
14.0'	10	16.8'	4

* From aperture to horizontal surface below.
** At IESNA defined Beam Angle, to 50% Max. CP.

MULTIPLE UNITS: PERFORMANCE 80/50/20% REFLECTANCES INITIAL FOOTCANDLES AND WATTS PER SQUARE FOOT					
Ceiling Height	Fixture Spacing	RCR 2: Large Room		RCR 4: Medium Room	
		FC*	W/Sq. Ft.	FC*	W/Sq. Ft.
10'	5'	74	1.10	65	1.20
	6'	64	0.98	54	0.98
11'	6'	60	0.89	51	0.92
	7'	44	0.66	40	0.72
12'	7'	41	0.62	41	0.74
	8'	35	0.53	31	0.55
14'	7'	41	0.61	37	0.65
	8'	35	0.53	27	0.49

Delivered Illuminance Rating: (DIR) 66 FC per W/Sq. Ft. 55 FC per W/Sq. Ft.
*Average Footcandles at 2.5' above floor.

CCT: 3500° K CRI: 84 CCT Output Factors: 40K 103%, 30K 95%, 27K 89%