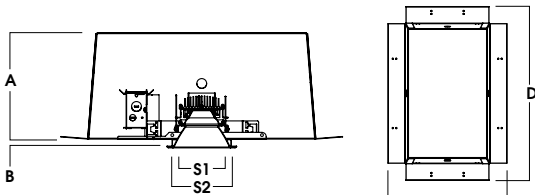
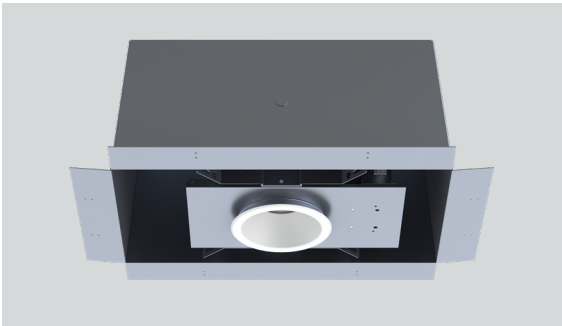
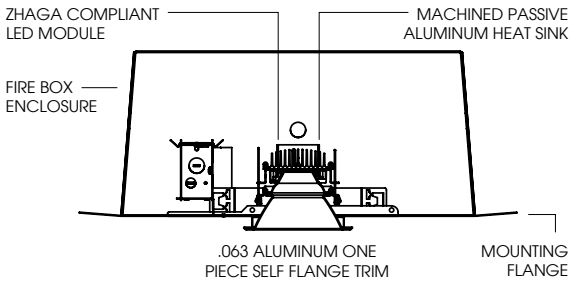


5" FIRE PRO - FIRE RATED DOWNLIGHT
OS SERIES / 2000 LUMENS MAX



| A | B | C | D | S1 | S2 |
|----------|---------|----------|----------|----------|----------|
| 9.5 | .625 | 17.2 | 25.1 | 4.9 | 6.3 |
| 241.3 mm | 15.9 mm | 436.9 mm | 637.5 mm | 124.5 mm | 160.0 mm |

FPE5LEDOS - TRIM FLANGE / NON-IC RATED

APPLICATION

Fire Pro 5" LED recessed open aperture downlight for fire rated ceilings.

FEATURES

60 minutes rated firebox enclosure. Two-stage optical system for smooth light distribution. Zhaga International Standard LED module for ease of maintenance and replacement. Tool-less LED module, driver and J-Box access. Multi-Bar mounting brackets. Posi-lock trim retention torsion springs. Integral 0.625" collar.

TRIM FINISH

A variety of architectural powdercoat and anodized finishes are available.

Matte white flange is standard.

ELECTRONICS

LED module features high brightness white Osram LEDs. 3-step MacAdam Ellipse binning and CRI 84 minimum. Full range of electronic 120V/277V and dimming drivers.

CONSTRUCTION

Housing / frame constructed of #20 ga. galvanized steel. Self-flanged one piece trim spun from 0.063" high purity aluminum and finished to specification. Extruded and machined 6063-H32 aluminum heatsink. T.I.M. gasket for optimal thermal management.

CODE COMPLIANCE

ASTM E119-05a, UL 263, UBC 7-1, NFPA 251, ANSI A2.1. Certified by Omega Point Laboratories. Certified by Intertek and Warnock Hersey. BAA Compliant. Non-IC rated. ETL certified to meet US and Canadian standards. Suitable for dry or damp locations. LM79/LM80/TM21 data available. Optional Wet location. Manufactured and tested to UL standards No. 1598/8750.

| WATTAGE / LUMENS DATA | | |
|-----------------------|----------------------------|--------------|
| PART NUMBER | SOURCE LUMENS ¹ | SYSTEM WATTS |
| FPE5LEDOS10L | 1100 | 11 |
| FPE5LEDOS15L | 1500 | 13 |
| FPE5LEDOS20L | 2000 | 20 |

| SERIES | LUMENS ¹ | CCT | DRIVER / VOLTAGE ² | OPTIONS ³ | FIREBOX | TRIM | FINISH ⁶ | TRIM OPTIONS | | |
|-----------|---------------------|---------|-------------------------------|--|--|--------|----------------------------|--------------|--|--|
| FPE5LEDOS | 10L | 1100 Lm | 27K 2700K | E. Electronic Driver DS2W1 1%, ELV/MLV, 120V DO10 10%, 0-10V DS10 1%, 0-10V | H12 12" - 24" Expandable Bars FS Fusing CR Corrosion Resistant PR ⁷ Deep Ceiling Extension GR Goof Ring AMB Anti-Microbial Finish | FB2012 | 60 Minutes Rated Enclosure | AR5223OS | MB ⁶ Matte White | SO ⁸ Micro Prism Solite™ Lens |
| | 15L | 1500 Lm | 30K 3000K | | | | | | GL Clear Glass Lens | |
| | 20L | 2000 Lm | 35K 3500K 40K 4000K | | | | | | HZ Haze Full Diffuse PT Platinum Silver BZ Bronze OB Oil Rubbed Bronze CH Charcoal AS Anodic Sapphire AN Anodic Natural AC Anodic Champagne AZ Anodic Bronze AK Anodic Black AM Anodic Malachite SN Sun Gold CO Copper Metallic GH Graphite CC ⁷ Custom Color | |

EXAMPLE: FPE5LEDOS10L35KE1/FB2012/AR5223OSMWSO

NOTES:
1 Nominal Source Lumens at 35K 2 Contact Factory for Additional Options 3 See Product Options Page for Details 4 Contact Factory 5 Inside Trim And Flange Will Match Color Specified 6 Standard Finish 7 Contact Factory for Special Finishes 8 Standard Lens 9 Flange and Reflector Same Finish



PROJECT: _____
TYPE: _____



Dimensions and values shown are nominal. Spectrum Lighting continually works to improve products and reserves the right to make changes which may alter the performance or appearance of products.