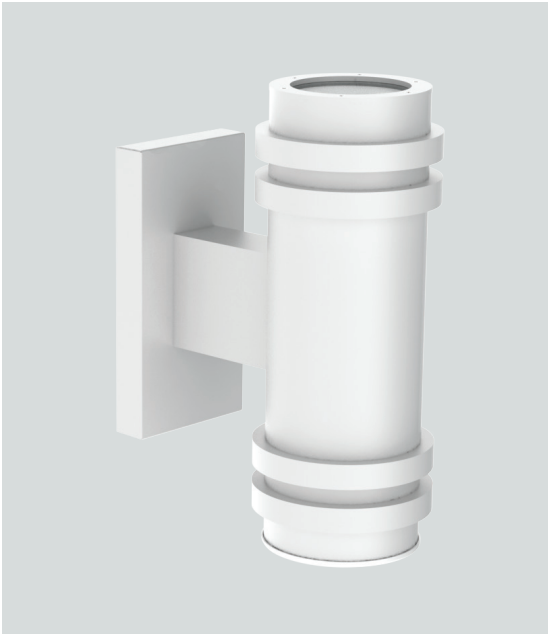


6" ROUND DECO DIRECT / INDIRECT DECORATIVE SERIES



C0618DECUDXT - WALL MOUNT

APPLICATION

6" round x 18" high decorative direct / indirect XT series cylinder luminaire for accent and general illumination.

FEATURES

Spectrum's Cylinder series provides traditional architectural style with high performance energy efficient illumination. Rugged design with flexible mounting, finish and LED options make these extremely versatile fixtures. Quick change LED module with interchangeable optics for job site flexibility and fixture upgrade.

FINISH

Multi-stage polyester powder-coat process applied on our dedicated paint lines. See mounting and color pages for standard finishes. All exposed materials are chromate pretreated to resist corrosion.

ELECTRONICS

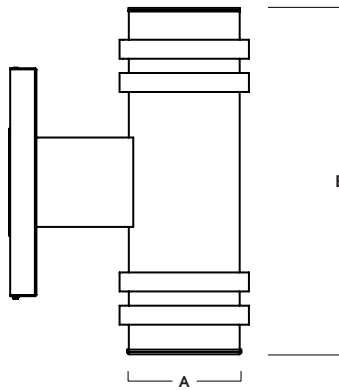
LED system features Xicato LED module with proprietary phosphor technology that provides consistent stable color with CCT control of +/- 100K over life of the light engine. Base CRI is 83 with 2-step MacAdam Ellipse binning. High CRI is 98 with 1 x 2-step MacAdam Ellipse binning. Variety of electronic 120V/277V and dimming drivers. 1 or 2 circuit operation.

CONSTRUCTION

Fabricated seamless aluminum fixture housing. Silicone gasket seals optical chamber. Specular primary optical reflectors provide high efficiency illumination. Impact resistant tempered glass lenses. Stainless steel hardware with galvanized steel brackets to resist corrosion. Trim formed from .063 thick high purity aluminum and finished to specification.

CODE COMPLIANCE

BAA compliant. ETL certified to meet US and Canadian standards. Suitable for dry or damp locations. Wet Location Option. Manufactured and tested to UL standards No. 1598/8750.



A	B
6.0 152.4 mm	18.1 459.7 mm

Fixture Weight: 27.5 lbs

LUMENS / WATTAGE DATA				
PART NUMBER	SOURCE LUMENS	DELIVERED LUMENS ²	SYSTEM WATTS ³	LPW
C0618DECUDXT10Lx2	2000	1251	18.2	69
C0618DECUDXT13Lx2	2600	1685	26.0	65
C0618DECUDXT20Lx2	4000	2592	43.4	60

SERIES	UPLIGHT ⁴		DOWNLIGHT		CCT		DRIVER / DIMMING ⁶	OPTIONS ⁷	TRIM	MOUNTING ¹⁰		FINISH ¹¹	
C0618DECUDXT	LUMENS ¹	OPTICS	LUMENS ¹	OPTICS	83 CRI		EX Electronic Driver, 120V/277V	WL Wet Location	TSG Semi Diffuse Low Iridescent	WM3 Wall Mount 3" Extension	MW ¹² Matte White		
					DS10X 10%, 0-10V, 120V/277V	FS Fuse Holder and Fuse							TCY Same Color as Cylinder
	DO10X 1%, 0-10V, 120V/277V	CR Corrosion Resistant	TCC Custom Color										
					20L 2000 Lm	XW 60°				13L 1300 Lm	XW 56°	98 CRI	
	27HK 2700K	30HK 3000K	35HK 3500K	40HK 4000K			GL ⁹ Clear Glass Lens	SO ⁹ Micro Prism Solite™ Lens	FG Frosted Glass Lens			EMRM 7W Remote EM	EMEN 7W Remote with Enclosure

EXAMPLE: C0618DECUDXT20LND20LWD35KEX/TSGSO/WM5/MW

NOTES:
 1 Nominal Source Lumens at Any CCT 2 Nominal Delivered Lumens at 83 CRI at Any CCT with MD-GL MD-TSG-SO 3 At 83 CRI 4 1/4" Clear Glass Only 5 13L Max/XN not Available with 98 CRI Option 6 Contact Factory for Additional Options 7 See Product Options Page for Details 8 Standard Lens for All Indirect and Direct: XN, ND 9 Standard Lens for Direct: MD, WD, XW 10 See Mounting Page for Details on Components and Finishes 11 See Color Page for More Options/Consult Factory for Special Finishes 12 Standard Finishes



PROJECT: _____
 TYPE: _____



Dimensions and values shown are nominal. Spectrum Lighting continually works to improve products and reserves the right to make changes which may alter the performance or appearance of products.

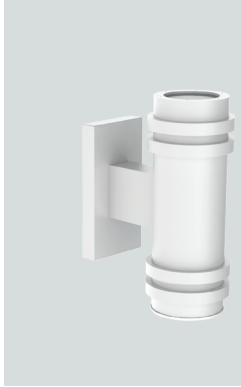
6" ROUND DECO DIRECT / INDIRECT

DECORATIVE SERIES / FIXTURE OPTIONS

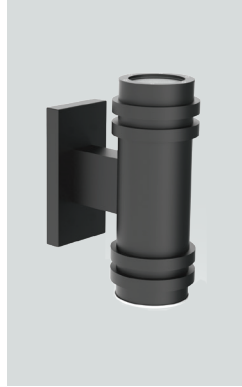


STANDARD FINISHES

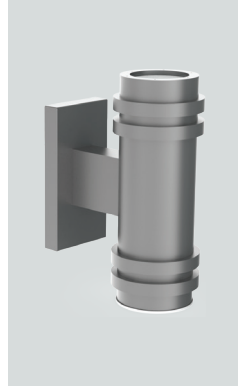
MW
MATTE WHITE



MB
MATTE BLACK

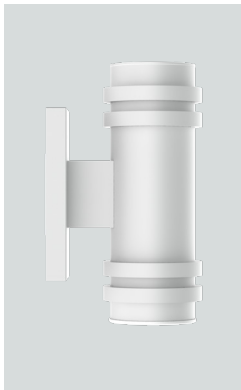


PT
PLATINUM SILVER

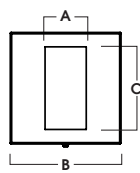


WALL MOUNT DETAIL

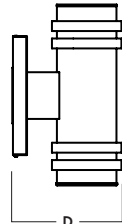
WM3
WALL MOUNT 3" EXTENSION



FRONT VIEW

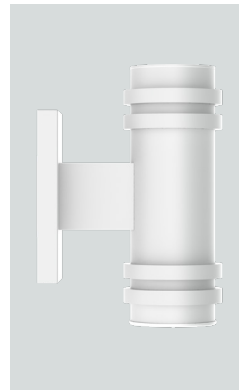


SIDE VIEW

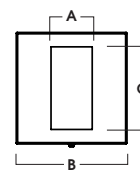


A	B	C	D
2.4	6.4	4.7	10.9
61.0 mm	162.6 mm	119.4 mm	276.9 mm

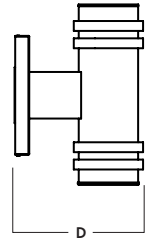
WM5
WALL MOUNT 5" EXTENSION



FRONT VIEW



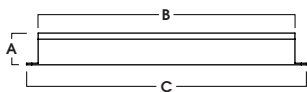
SIDE VIEW



A	B	C	D
2.4	6.4	4.7	12.9
61.0 mm	162.6 mm	119.4 mm	327.7 mm

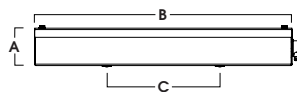
EMERGENCY BATTERY OPTIONS

EMRM* - 7W REMOTE EMERGENCY BATTERY
(50' MAX)



A	B	C
1.3	12.6	13.0

EMEN* - 7W REMOTE EMERGENCY BATTERY
WITH ENCLOSURE (50' MAX)



A	B	C
2.0	17.0	6.2

*OTHER EM BATTERY SIZES AVAILABLE. CONSULT FACTORY

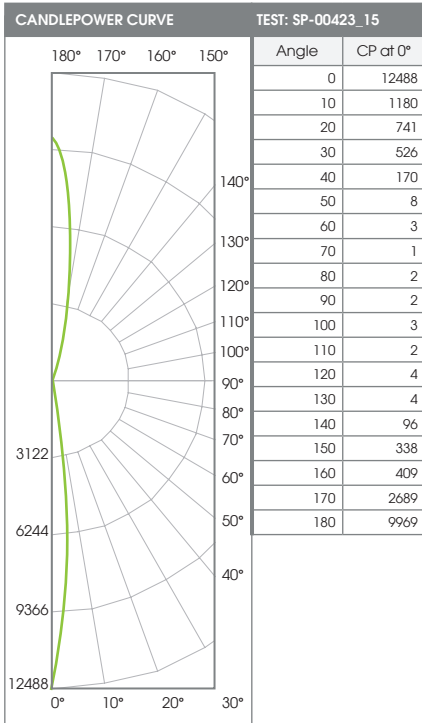
6" ROUND DECO DIRECT / INDIRECT

DECORATIVE SERIES / PHOTOMETRIC DATA



C06xxUDXT-13LXNGL-13LXN-xxKEX-TSG-GL

13Lx2 XTRA NARROW - 83 CRI



ZONAL LUMENS		
0-20	725	30%
0-40	1251	51%
0-60	1289	53%
0-90	1295	53%
90-120	7	0%
90-150	168	7%
90-180	1144	47%
Total Lumens	2438	100%

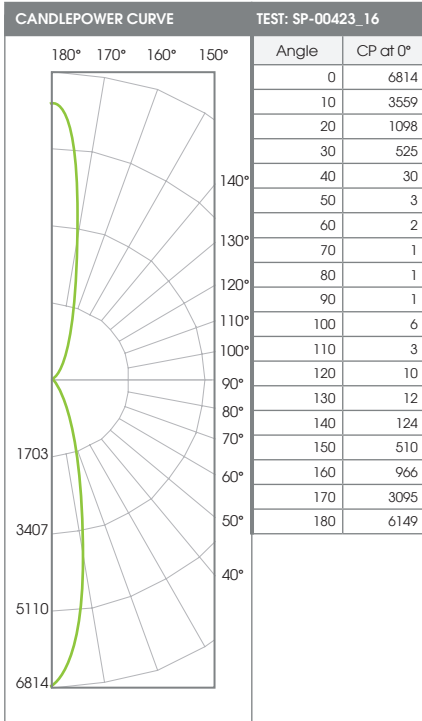
SINGLE UNIT: PERFORMANCE INITIAL FOOTCANDLES AND BEAM ANGLE DIAMETERS			
Mounting Height*	FC at Center	Diameter of Beam**	FC at Beam**
5.5'	413	0.9'	205
6.5'	296	1.1'	147
7.5'	222	1.3'	110
8.5'	173	1.4'	86
10.0'	125	1.7'	62
12.0'	87	2.0'	43
14.0'	64	2.4'	32
16.0'	49	2.7'	24

SINGLE UNIT: PERFORMANCE INITIAL FOOTCANDLES AND BEAM ANGLE DIAMETERS			
Mounting Distance*	FC at Center	Diameter of Beam**	FC at Beam**
4.0'	781	1.1'	384
5.0'	500	1.3'	246
6.0'	347	1.6'	170
8.0'	195	2.1'	96
10.0'	125	2.6'	61
12.0'	87	3.2'	43
14.0'	64	3.7'	31
16.0'	49	4.2'	24

Delivered Lumens: 2438 CP @ 0° (Nadir): 12488 Spacing Ratio: N/A
 Luminaire Watts: 36.8 Direct Beam Angle: 9.7° Output Multipliers: 10L x 0.74
 LER: 66 Indirect Beam Angle: 15.0°
 CRI: 83

C06xxUDXT-20LNDGL-20LND-xxKEX-TSG-GL

20Lx2 NARROW - 83 CRI



ZONAL LUMENS		
0-20	1043	32%
0-40	1562	48%
0-60	1573	49%
0-90	1576	49%
90-120	16	0%
90-150	298	9%
90-180	1663	51%
Total Lumens	3239	100%

SINGLE UNIT: PERFORMANCE INITIAL FOOTCANDLES AND BEAM ANGLE DIAMETERS			
Mounting Height*	FC at Center	Diameter of Beam**	FC at Beam**
5.5'	225	2.0'	109
6.5'	161	2.4'	78
7.5'	121	2.8'	59
8.5'	94	3.2'	46
10.0'	68	3.7'	33
12.0'	47	4.5'	23
14.0'	35	5.2'	17
16.0'	27	6.0'	13

SINGLE UNIT: PERFORMANCE INITIAL FOOTCANDLES AND BEAM ANGLE DIAMETERS			
Mounting Distance*	FC at Center	Diameter of Beam**	FC at Beam**
4.0'	426	1.4'	207
5.0'	273	1.8'	132
6.0'	189	2.1'	92
8.0'	106	2.8'	52
10.0'	68	3.5'	33
12.0'	47	4.2'	23
14.0'	35	4.9'	17
16.0'	27	5.6'	13

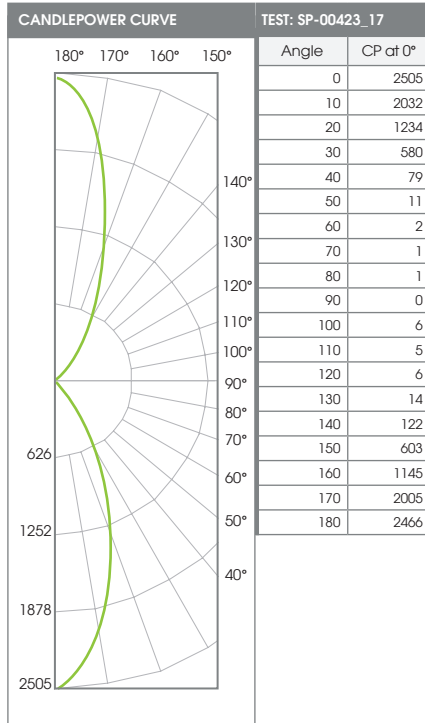
Delivered Lumens: 3239 CP @ 0° (Nadir): 6814 Spacing Ratio: N/A
 Luminaire Watts: 43.4 Direct Beam Angle: 21.1° Output Multipliers: 10L x 0.48, 13L x 0.65
 LER: 75 Indirect Beam Angle: 20.0°
 CRI: 83

6" ROUND DECO DIRECT / INDIRECT

DECORATIVE SERIES / PHOTOMETRIC DATA



C06xxUDXT-20LMDGL-20LMD-xxKEX-TSG-SO



Beam Angle	Lumens	%
0-20	674	26%
0-40	1272	49%
0-60	1305	50%
0-90	1308	50%
90-120	15	1%
90-150	270	10%
90-180	1284	50%
Total Lumens	2592	100%

20Lx2 MEDIUM - 83 CRI

Mounting Height*	FC at Center	Diameter of Beam**	FC at Beam**
5.5'	83	4.0'	37
6.5'	59	4.7'	26
7.5'	45	5.4'	20
8.5'	35	6.1'	15
10.0'	25	7.2'	11
12.0'	17	8.6'	8
14.0'	13	10.1'	6
16.0'	10	11.5'	4

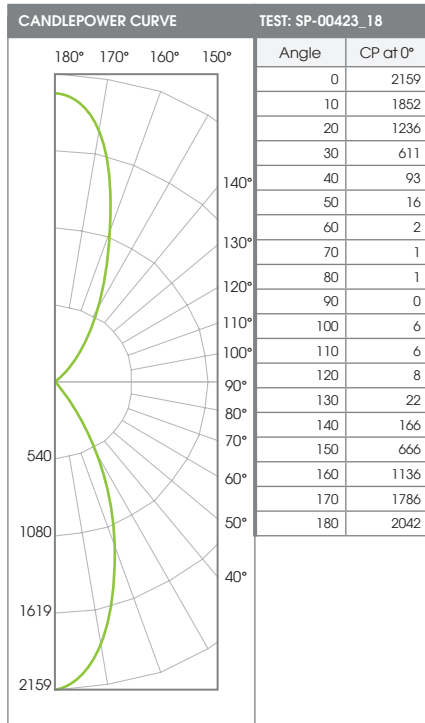
* From aperture to horizontal surface below.
** At IESNA defined Beam Angle, to 50% Max. CP.

Mounting Distance*	FC at Center	Diameter of Beam**	FC at Beam**
4.0'	157	2.8'	70
5.0'	100	3.5'	45
6.0'	70	4.2'	31
8.0'	39	5.7'	17
10.0'	25	7.1'	11
12.0'	17	8.5'	8
14.0'	13	9.9'	6
16.0'	10	11.3'	4

* From top of fixture to horizontal surface above.
** At IESNA defined Beam Angle, to 50% Max. CP.

Delivered Lumens: 2592 CP @ 0° (Nadir): 2505 Spacing Ratio: N/A
 Luminaire Watts: 43.4 Direct Beam Angle: 39.6° Output Multipliers: 10L x 0.48, 13L x 0.65
 LER: 60 Indirect Beam Angle: 39.0°
 CRI: 83

C06xxUDXT-20LWDGL-20LWD-xxKEX-TSG-SO



Beam Angle	Lumens	%
0-20	627	24%
0-40	1255	48%
0-60	1298	50%
0-90	1302	50%
90-120	16	1%
90-150	329	13%
90-180	1307	50%
Total Lumens	2609	100%

20Lx2 WIDE - 83 CRI

Mounting Height*	FC at Center	Diameter of Beam**	FC at Beam**
5.5'	71	4.6'	30
6.5'	51	5.4'	22
7.5'	38	6.2'	16
8.5'	30	7.1'	13
10.0'	22	8.3'	9
12.0'	15	10.0'	6
14.0'	11	11.6'	5
16.0'	8	13.3'	4

* From aperture to horizontal surface below.
** At IESNA defined Beam Angle, to 50% Max. CP.

Mounting Distance*	FC at Center	Diameter of Beam**	FC at Beam**
4.0'	135	3.1'	59
5.0'	86	3.8'	38
6.0'	60	4.6'	26
8.0'	34	6.1'	15
10.0'	22	7.7'	9
12.0'	15	9.2'	7
14.0'	11	10.7'	5
16.0'	8	12.3'	4

* From top of fixture to horizontal surface above.
** At IESNA defined Beam Angle, to 50% Max. CP.

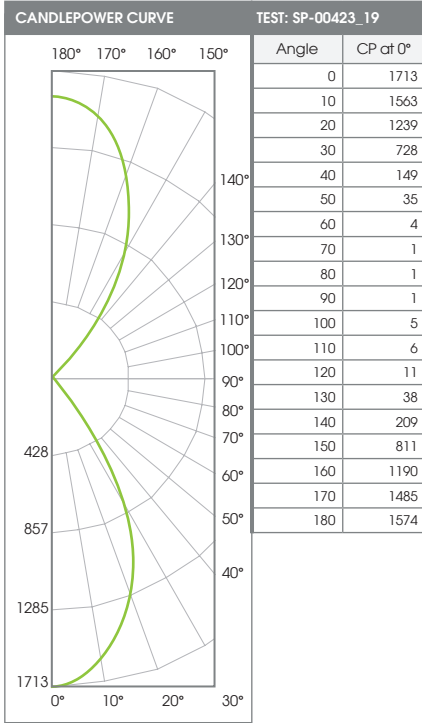
Delivered Lumens: 2609 CP @ 0° (Nadir): 2159 Spacing Ratio: N/A
 Luminaire Watts: 43.4 Direct Beam Angle: 45.1° Output Multipliers: 10L x 0.48, 13L x 0.65
 LER: 60 Indirect Beam Angle: 42.0°
 CRI: 83

6" ROUND DECO DIRECT / INDIRECT
 DECORATIVE SERIES / PHOTOMETRIC DATA



C06xxUDXT-20LXWGL-20LXW-xxKEX-TSG-SO

20Lx2 XTRA WIDE - 83 CRI



Beam Angle	Lumens	%
0-20	556	20%
0-40	1273	47%
0-60	1349	50%
0-90	1354	50%
90-120	17	1%
90-150	407	15%
90-180	1365	50%
Total Lumens	2719	100%

Mounting Height*	FC at Center	Diameter of Beam**	FC at Beam**
5.5'	57	5.4'	23
6.5'	41	6.3'	16
7.5'	30	7.3'	12
8.5'	24	8.3'	10
10.0'	17	9.8'	7
12.0'	12	11.7'	5
14.0'	9	13.7'	4
16.0'	7	15.6'	3

Mounting Distance*	FC at Center	Diameter of Beam**	FC at Beam**
4.0'	107	4.2'	42
5.0'	69	5.3'	27
6.0'	48	6.3'	19
8.0'	27	8.4'	10
10.0'	17	10.5'	7
12.0'	12	12.6'	5
14.0'	9	14.7'	3
16.0'	7	16.8'	3

Delivered Lumens: 2719
 Luminaire Watts: 43.4
 LER: 63

CP @ 0° (Nadir): 1713
 Direct Beam Angle: 52.0°
 Indirect Beam Angle: 55.5°
 CRI: 83

Spacing Ratio: N/A
 Output Multipliers: 10L x 0.48, 13L x 0.65

* From aperture to horizontal surface below.
 ** At IESNA defined Beam Angle, to 50% Max. CP.

* From top of fixture to horizontal surface above.
 ** At IESNA defined Beam Angle, to 50% Max. CP.

COLOR OPTIONS - POWDER COAT PAINT FINISHES

NOTE: NO PRINTED IMAGE CAN EQUAL THE EXACT COLOR OF FINISH ON METAL.
SEE INDIVIDUAL SPECIFICATION SHEETS OR CONSULT FACTORY FOR ADDITIONAL INFORMATION.



STANDARD CORD / STEM / CANOPY FINISHES

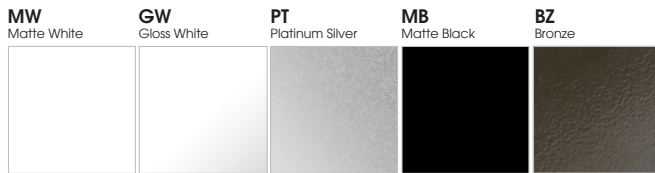
FIXTURE COLOR	STANDARD CORD COLOR	STANDARD CANOPY / STEM COLOR
Matte White, Textured White	Matte White	Matte White
Gloss White	Matte White	Gloss White
Matte Black, Textured Black	Matte Black	Matte Black
All Others	Matte Black	Same Color as Fixture
Custom Color	Contact Factory	Contact Factory

PAINT TIMES

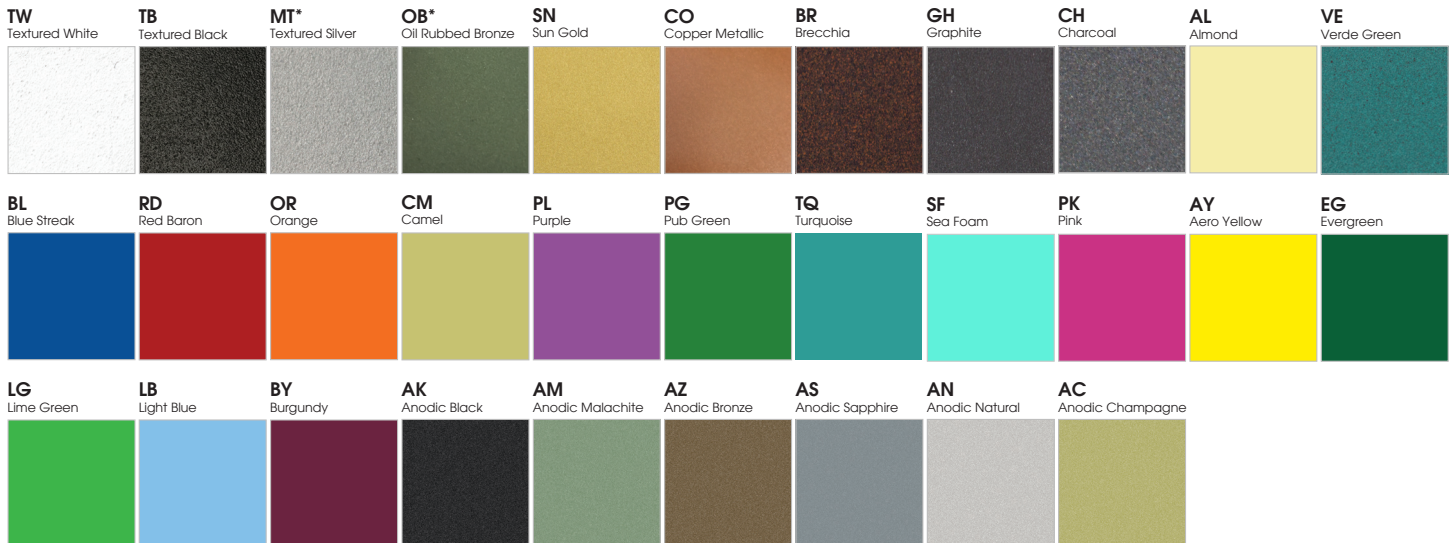
TIER	COST	AVERAGE PAINT TIME*
Tier 1 - Standard Finishes	\$	⌚
Tier 2 - Typical Finishes	\$\$	⌚⌚
Custom Color	Contact Factory	Contact Factory

*CONTACT FACTORY FOR SPECIFIC PRODUCT LEAD TIMES

TIER 1 - STANDARD FINISHES



TIER 2 - TYPICAL FINISHES



CUSTOM COLOR FINISHES

CONTACT FACTORY

CC
Custom Color



*UNAVAILABLE FOR WET LOCATION