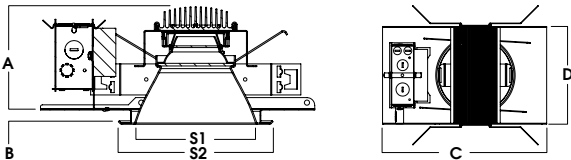
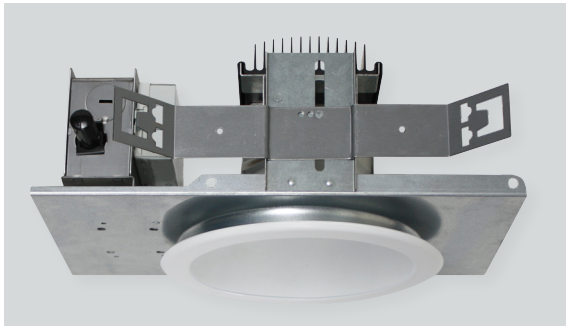
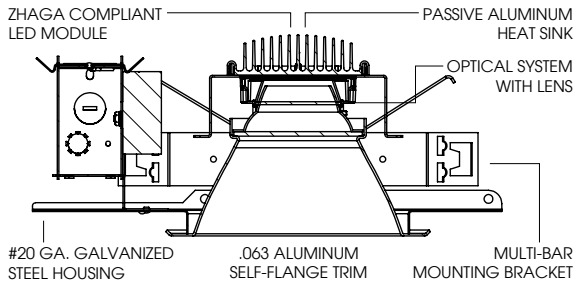


8" ROUND LED DOWNLIGHT

OS SERIES / 4500 LUMENS MAX



A	B	C	D	S1	S2
4.7	0.625	14.0	9.38	7.5	9.2
126.2 mm	15.87 mm	355.6 mm	236.2 mm	190.5 mm	233.7 mm

SGE8LEDOS - TRIM FLANGE / NON-IC RATED

APPLICATION

8" LED Recessed open aperture downlight for general downlighting.

FEATURES

Two-stage optical system for smooth light distribution. Zhaga International Standard LED module for ease of maintenance and replacement. Shallow plenum design. Tool-less LED module, driver and J-Box access. Multi-Bar mounting brackets. BH27 Standard mounting bars included. Posi-lock trim retention torsion springs. Integral 0.625" collar.

TRIM FINISH

A variety of architectural powdercoat and anodized finishes are available. Matte white flange is standard.

ELECTRONICS

LED module features high brightness white Osram LEDs. 3-step MacAdam Ellipse binning and CRI 84 minimum. Full range of electronic 120V/277V and dimming drivers.

CONSTRUCTION

Housing/frame constructed of #20 ga. galvanized steel to resist corrosion. Self-flanged one piece trim spun from 0.063" thick high purity aluminum and finished to specification. Passive machined aluminum heatsink.

CODE COMPLIANCE

BAA Compliant. Non-IC rated. ETL certified to meet US and Canadian standards. Suitable for dry or damp locations. Optional Wet location. LM79/LM80/TM21 data available. Manufactured and tested to UL standards No. 1598/8750.

WATTAGE TO LUMENS UPDATE					
CURRENT PART NUMBER EXAMPLE	PREVIOUS PART NUMBER EXAMPLE	SOURCE LUMENS ¹	DELIVERED LUMENS ²	SYSTEM WATTS	LPW
SGE8LEDOS10L	SGE8LEDOS14W	1100	863	11	78
SGE8LEDOS15L	N/A	1500	1092	13	84
SGE8LEDOS20L	SGE8LEDOS25W	2000	1833	20	92
SGE8LEDOS30L	SGE8LEDOS35W	3000	2519	28	90
SGE8LEDOS45L	N/A	4500	3728	41	90

SERIES	LUMENS ¹	CCT	DRIVER / VOLTAGE ³	OPTIONS ⁴	TRIM	FINISH	TRIM OPTIONS		
SGE8LEDOS	10L	1100 Lm	27K 2700K 30K 3000K 35K 3500K 40K 4000K	E Electronic Driver DS10 10%, 0-10V DO10 1%, 0-10V DS2W1 1%, ELV/MLV, 120V DLTE1 1% Lutron® 2-Wire Forward Phase, 120V DL3E 1% Lutron® EcoSystem®, Fade EL10 1%, eldoLED ED01 0.1%, eldoLED DALI DALI Control	1 120V 2 277V	BH27 ⁵ 27" Solid Bars H12 12" - 24" Expandable Bars H06 6" - 12" Expandable Bars CB24 24" C-Channel Bars FS Fusing EB Fixture Painted Black CR Corrosion Resistant PR ⁶ Deep Ceiling Extension GR Goof Ring ZIG ⁷ ZigBee Module BLU ⁷ Bluetooth LE EM ⁸ 7W Emergency Battery Test Switch Remote EMIT ⁹ 7W Emergency Battery Test Switch in Trim AMB Anti-Microbial Finish	AR8223OS	MW ¹⁰ Matte White MB Matte Black SG Semi-Diffuse HZ Haze Full Diffuse PT Platinum Silver BZ Bronze OB Oil Rubbed Bronze CH Charcoal AS Anodic Sapphire AN Anodic Natural AC Anodic Champagne AZ Anodic Bronze AK Anodic Black AM Anodic Malachite SN Sun Gold CO Copper Metallic GH Graphite CC ¹¹ Custom Color	SO ¹² Micro Prism Solite™ Lens GL Clear Glass Lens FG Frosted Glass Lens GS Gasket WL Wet Location EMIT ⁹ Emergency Test Switch in Trim PF ¹³ Polished Flange AMB Anti-Microbial Finish
	15L	1500 Lm							
	20L	2000 Lm							
	30L	3000 Lm							
	45L	4500 Lm							

EXAMPLE: SGE8LEDOS30L35KE1/AR8223OSSGSO

NOTES:
 1 Nominal Source Lumens at 35K 2 Nominal Delivered Lumens at 35K with SG-SO 3 Contact Factory for Additional Options 4 See Product Options Page for Details 5 Standard Bar Hangers 6 Contact Factory
 7 Order DS10/2 When Specifying ZIG or BLU 8 Standard EM 9 EMIT Suffix Required on Trim and Housing 10 Standard Finish 11 Contact Factory for Special Finishes 12 Standard Lens 13 Flange and Reflector Same Finish



PROJECT: _____
 TYPE: _____



Dimensions and values shown are nominal. Spectrum Lighting continually works to improve products and reserves the right to make changes which may alter the performance or appearance of products.

8" ROUND LED DOWNLIGHT OS SERIES / PHOTOMETRIC DATA

recessed
fixtures



SGE8LEDOS14W35KE1-AR8223OSMWSO

CANDLEPOWER CURVE		TEST: 20141008-M-8-14W		
Angle	CP at 0°	Lumens/Zone		
0°	859			
5°	854			
10°	830	8%		
15°	785			
20°	729	28%		
25°	656			
30°	554	56%		
40°	219	79%		
50°	88			
60°	48	94%		
70°	27			
80°	12	99%		
90°	0	100%		

Delivered Lumens: 1064
Luminaire Watts: 14.4
LER: 74

CP @ 0° (Nadir): 859
Beam Angle: 67°
Spacing Ratio: 1.04

SINGLE UNIT: PERFORMANCE INITIAL FOOTCANDLES AND BEAM ANGLE DIAMETERS			
Mounting Height*	FC at Center	Diameter of Beam**	FC at Beam**
5.5'	28	7.3'	10
6.5'	20	8.6'	7
7.5'	15	9.9'	5
8.0'	13	10.6'	5
8.5'	12	11.3'	4
9.0'	11	11.9'	4
10.0'	9	13.2'	3
11.0'	7	14.6'	2

* From aperture to horizontal surface below.
** At IESNA defined Beam Angle, to 50% Max. CP.

MULTIPLE UNITS: PERFORMANCE 80/50/20% REFLECTANCES INITIAL FOOTCANDLES AND WATTS PER SQUARE FOOT					
Ceiling Height	Fixture Spacing	RCR 2: Large Room		RCR 4: Medium Room	
		FC*	W/Sq. Ft.	FC*	W/Sq. Ft.
8'	4'	57	0.79	55	0.90
	5'	41	0.56	41	0.68
9'	5'	37	0.51	39	0.64
	6'	26	0.35	31	0.51
10'	5'	33	0.46	30	0.48
	6'	29	0.40	24	0.40
11'	6'	27	0.36	23	0.38
	7'	20	0.27	18	0.29

Delivered Illuminance Rating: (DIR) 73 FC per W/Sq. Ft. 61 FC per W/Sq. Ft.
*Average Footcandles at 2.5' above floor.

CCT: 3500° K CRI: 84 CCT Output Factors: 40K 103%, 30K 95%, 27K 89% Multiplier for FC Values at 9W: 0.56

SGE8LEDOS25W35KE1-AR8223OSMWSO

CANDLEPOWER CURVE		TEST: 20141008-M-8-25W		
Angle	CP at 0°	Lumens/Zone		
0°	1402			
5°	1393			
10°	1354	8%		
15°	1281			
20°	1190	28%		
25°	1071			
30°	905	56%		
40°	358	79%		
50°	143			
60°	78	94%		
70°	45			
80°	20	99%		
90°	0	100%		

Delivered Lumens: 1736
Luminaire Watts: 25.6
LER: 68

CP @ 0° (Nadir): 1402
Beam Angle: 67°
Spacing Ratio: 1.04

SINGLE UNIT: PERFORMANCE INITIAL FOOTCANDLES AND BEAM ANGLE DIAMETERS			
Mounting Height*	FC at Center	Diameter of Beam**	FC at Beam**
6.5'	33	8.6'	12
7.5'	25	9.9'	9
8.5'	22	10.6'	8
9.0'	19	11.3'	7
9.5'	17	11.9'	6
10.0'	14	13.2'	5
11.0'	12	14.6'	4
12.0'	10	15.9'	3

* From aperture to horizontal surface below.
** At IESNA defined Beam Angle, to 50% Max. CP.

MULTIPLE UNITS: PERFORMANCE 80/50/20% REFLECTANCES INITIAL FOOTCANDLES AND WATTS PER SQUARE FOOT					
Ceiling Height	Fixture Spacing	RCR 2: Large Room		RCR 4: Medium Room	
		FC*	W/Sq. Ft.	FC*	W/Sq. Ft.
9'	5'	60	0.90	64	1.14
	6'	42	0.63	51	0.90
10'	5'	54	0.81	48	0.85
	6'	47	0.71	40	0.71
11'	6'	44	0.65	38	0.67
	7'	32	0.48	29	0.52
12'	7'	30	0.45	30	0.54
	8'	26	0.39	23	0.40

Delivered Illuminance Rating: (DIR) 66 FC per W/Sq. Ft. 56 FC per W/Sq. Ft.
*Average Footcandles at 2.5' above floor.

CCT: 3500° K CRI: 84 CCT Output Factors: 40K 103%, 30K 95%, 27K 89%

SGE8LEDOS35W35KE1-AR8223OSMWSO

CANDLEPOWER CURVE		TEST: 20141008-M-8-35W		
Angle	CP at 0°	Lumens/Zone		
0°	2099			
5°	2086			
10°	2028	8%		
15°	1918			
20°	1782	28%		
25°	1603			
30°	1355	56%		
40°	536	79%		
50°	214			
60°	116	94%		
70°	67			
80°	29	99%		
90°	0	100%		

Delivered Lumens: 2599
Luminaire Watts: 35.2
LER: 74

CP @ 0° (Nadir): 2099
Beam Angle: 67°
Spacing Ratio: 1.04

SINGLE UNIT: PERFORMANCE INITIAL FOOTCANDLES AND BEAM ANGLE DIAMETERS			
Mounting Height*	FC at Center	Diameter of Beam**	FC at Beam**
7.5'	37	9.9'	13
8.5'	33	10.6'	11
9.5'	29	11.3'	10
10.0'	26	11.9'	9
11.0'	21	13.2'	7
11.5'	17	14.6'	6
12.0'	15	15.9'	5
14.0'	11	18.5'	4

* From aperture to horizontal surface below.
** At IESNA defined Beam Angle, to 50% Max. CP.

MULTIPLE UNITS: PERFORMANCE 80/50/20% REFLECTANCES INITIAL FOOTCANDLES AND WATTS PER SQUARE FOOT					
Ceiling Height	Fixture Spacing	RCR 2: Large Room		RCR 4: Medium Room	
		FC*	W/Sq. Ft.	FC*	W/Sq. Ft.
10'	5'	81	1.12	72	1.17
	6'	71	0.98	59	0.98
11'	6'	66	0.89	57	0.92
	7'	48	0.66	44	0.72
12'	7'	45	0.62	46	0.74
	8'	39	0.53	34	0.55
14'	7'	45	0.62	40	0.65
	8'	38	0.53	30	0.49

Delivered Illuminance Rating: (DIR) 72 FC per W/Sq. Ft. 61 FC per W/Sq. Ft.
*Average Footcandles at 2.5' above floor.

CCT: 3500° K CRI: 84 CCT Output Factors: 40K 103%, 30K 95%, 27K 89%