



6" ROUND DIRECT
WET LOCATION
 GAMMA SERIES

PROJECT: _____
 QUANTITY: _____ TYPE: _____



CW0606PC



CW0612PC



CW0618PC

SERIES	LUMENS ¹		CCT	OPTICS		DRIVER / DIMMING ²		LENS		MOUNTING ³		FINISH ⁴										
CW0606PC 6" x 6"	10L	700 Lm	80 CRI	ND	14°	EX	Electronic Driver, 120V/277V	CL	Clear Lens	WM	Wall Mount	MW⁵	Matte White									
	15L	1050 Lm												27K	2700K	MD	31°	DO10X	1%, 0-10V, 120V/277V	SO	Micro Prism Solite™ Lens	MB⁵
CW0612PC 6" x 12"	20L	1400 Lm	30K	3000K	WD	52°	DS2W1	ELV/MLV, 120V					PT⁵	Platinum Silver								
	30L	2100 Lm													35K	3500K	XW	75°			CC	Custom Color
	40L	2850 Lm													40K	4000K						
CW0618PC 6" x 18"			90 CRI							EMER. BAT. OPTIONS		See Page 4 for Full Range of Color Options (83-90165)										
			27HK	2700K					EMRM	7W Remote EM												
			30HK	3000K					EMEN	7W Remote EM with Enclosure												

EXAMPLE: CW0606PC15L35KNDEX/CL/WM/MW

NOTES:
 1 Nominal Delivered Lumens at 3500K 2 Consult Factory for Additional Options 3 See Mounting Page for Details on Components and Finishes
 4 See Color Page for More Options/Consult Factory for Special Finishes 5 Standard Finishes



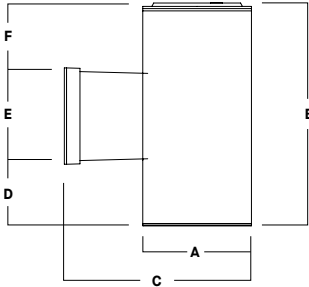


6" ROUND DIRECT WET LOCATION GAMMA SERIES

LUMENS / WATTAGE DATA			
PART NUMBER	DELIVERED LUMENS ¹	SYSTEM WATTS	LPW
CW0612PC 10L	707	6.5	109
CW0612PC 15L	1046	9.5	110
CW0612PC 20L	1413	12.9	110
CW0612PC 30L	2120	19.9	107
CW0612PC 40L	2827	27.4	103

¹ Nominal Delivered Lumens at 3500K, 80 CRI, Medium Optic with Clear Lens

DIMENSIONS



Dimensioned with **CW0612PC**

SERIES	A	B	C	D	E	F
CW0606PC	6.1	6.4	10.5	0.4	5.4	0.6
CW0612PC	6.1	12.4	10.5	3.4	5.4	3.6
CW0618PC	6.1	18.5	10.5	6.4	5.4	6.6

APPLICATION

The Gamma Family of Cylinders are a robust offering of point source LED luminaires featuring high efficacies, an assortment of optical control, and installation flexibility, which make them suitable for a wide range of commercial and institutional applications.

ELECTRONICS

Solid-state light engine available in various color temperatures and lumen outputs. Specifiable in 2700K, 3000K, 3500K, 4000K in CRI 80 (Typ.), or 2700K, 3000K in CRI 90 (Typ.), color accuracy ≤ 3 SDCM. Selection of integral electronic constant current, dimmable drivers available, power factor > 0.9 (Typ). Driver and light engine are field serviceable for future replacement or upgrades. Emergency battery options provide 7W for 90 minutes.

CONSTRUCTION

Seamless cylinder body machined from 6063 extruded aluminum. Trim and top cap are die-cast aluminum. Self-locating trim is secured with self-sealing stainless steel hardware. Nitrile rubber o-rings provide additional ingress protection from water. Passive aluminum heatsink optimized for emitter life and performance. Specular reflectors offered in variety of beam spreads. Lens type must be specified.

MOUNTING

Mounting bracket for direct installation with 4" octagonal junction boxes. Single-piece, seamless die-cast aluminum wall arm. See mounting page for additional information. Contact factory for special installation circumstances.

FINISH

Multi-stage polyester powder-coat process applied on our in-house finishing department. Custom colors also available (contact factory with RAL#). Wall arm will match cylinder finish specification.

CODE COMPLIANCE

ETL Listed. Suitable for wet locations with operation in ambient conditions up to 25°C. 5 year limited warranty on all components. Proudly designed and manufactured in Massachusetts, USA.

SERIES SIZES

CW0606PC



CW0612PC



CW0618PC



STANDARD FINISHES SHOWN WITH CW0612PC

MW
Matte White



MB
Matte Black

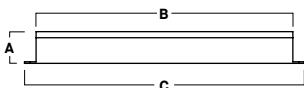


PT
Platinum Silver



EMERGENCY BATTERY OPTIONS

EMRM* - 7W REMOTE EMERGENCY BATTERY
(50' MAX)



A	B	C
1.3	12.6	13.0

EMEN* - 7W REMOTE EMERGENCY BATTERY
WITH ENCLOSURE (50' MAX)



A	B	C
2.0	17.0	6.2

*OTHER EM BATTERY SIZES AVAILABLE. CONSULT FACTORY





6" ROUND DIRECT

GAMMA SERIES / PHOTOMETRIC DATA

CW06XXPC 40L 35K ND XX CL XX

CANDLEPOWER CURVE TEST SP-01077	INTENSITY CANDELA 0° AZIMUTH	ZONAL LUMENS	SINGLE UNIT: PERFORMANCE DIRECT FOOTCANDLES BASED ON DOWNLIGHT ONLY				MULTIPLE UNITS: PERFORMANCE 80/50/20% REFLECTANCES INITIAL FOOTCANDLES AND WATTS PER SQUARE FOOT					
			Mounting Height AFF	FC at Center on Floor	Beam Diameter	FC at Beam Edge	Ceiling Height	Fixture Spacing	RCR 4		RCR 6	
	0°	0° - 10° 894 31%	10'	173 fc	2.4'	85 fc	18'	3'	271	2.81	272	3.12
	0°	0° - 20° 1453 50%	12'	120 fc	2.9'	59 fc	22'	4"	156	1.61	156	1.79
	5°	0° - 30° 2001 69%	14'	88 fc	3.4'	43 fc	26'	5"	101	1.04	101	1.16
	15°	0° - 40° 2620 90%	16'	68 fc	3.9'	33 fc	Delivered Illuminance Rating: (DIR)		97 FC per W/Sq. Ft.		87 FC per W/Sq. Ft.	
	25°	0° - 60° 2890 100%	20'	43 fc	4.8'	21 fc	3' Suspension Length to luminous aperture Square rooms used for multiple units: RCR 4: Length & Width = Ceiling Ht. - 5.5' x 2.50 RCR 6: Length & Width = Ceiling Ht. - 5.5' x 1.66 * Average Footcandles at 2.5' Above Floor ** Exceeds Spacing Ratio by 1% *** Exceeds Spacing Ratio by 2%					
	35°	0° - 80° 2893 100%	24'	30 fc	5.8'	15 fc						
	45°	0° - 90° 2895 100%	28'	22 fc	6.7'	11 fc						
	55°	0° - 90° 2895 100%	32'	17 fc	7.7'	8 fc						
	90°	1	Total 2895 100%									
	Delivered Lumens: 2895 CP at 0° (Nadir): 17337 Beam Angle: 14° Lumen Multiplier: 10L x 0.25, 15L x 0.37, 20L x 0.50, 30L x 0.75 Luminaire Watts: 27.4 Spacing Ratio: 0.24 CCT Multiplier: 27K x 0.97, 30K x 0.98, 40K x 1.04 LER: 105.66 CRI: 80 27HK x 0.78, 30HK x 0.82 See Page 1 for System Watts for all outputs											

CW06XXPC 40L 35K MD XX CL XX

CANDLEPOWER CURVE TEST SP-01076	INTENSITY CANDELA 0° AZIMUTH	ZONAL LUMENS	SINGLE UNIT: PERFORMANCE DIRECT FOOTCANDLES BASED ON DOWNLIGHT ONLY				MULTIPLE UNITS: PERFORMANCE 80/50/20% REFLECTANCES INITIAL FOOTCANDLES AND WATTS PER SQUARE FOOT					
			Mounting Height AFF	FC at Center on Floor	Beam Diameter	FC at Beam Edge	Ceiling Height	Fixture Spacing	RCR 3		RCR 5	
	0°	0° - 10° 484 17%	8'	89 fc	4.4'	40 fc	14'	4'	172	1.75	164	1.90
	0°	0° - 20° 1284 45%	10'	57 fc	5.5'	26 fc	18'	6'	65	0.66	52	0.60
	5°	0° - 30° 1907 67%	12'	40 fc	6.5'	18 fc	22'	8'	39	0.40	31	0.36
	15°	0° - 40° 2543 90%	14'	29 fc	7.6'	13 fc	Delivered Illuminance Rating: (DIR)		98 FC per W/Sq. Ft.		87 FC per W/Sq. Ft.	
	25°	0° - 60° 2814 100%	16'	22 fc	8.7'	10 fc	2' Suspension Length to luminous aperture Square rooms used for multiple units: RCR 3: Length & Width = Ceiling Ht. - 4.5' x 3.33 RCR 5: Length & Width = Ceiling Ht. - 4.5' x 2.00 * Average Footcandles at 2.5' Above Floor					
	35°	0° - 80° 2825 100%	20'	14 fc	10.9'	6 fc						
	45°	0° - 90° 2827 100%	24'	10 fc	13.1'	4 fc						
	55°	0° - 90° 2827 100%	28'	7 fc	15.3'	3 fc						
	90°	1	Total 2827 100%									
	Delivered Lumens: 2827 CP at 0° (Nadir): 5721 Beam Angle: 31° Lumen Multiplier: 10L x 0.25, 15L x 0.37, 20L x 0.50, 30L x 0.75 Luminaire Watts: 27.4 Spacing Ratio: 0.50 CCT Multiplier: 27K x 0.97, 30K x 0.98, 40K x 1.04 LER: 103.18 CRI: 80 27HK x 0.78, 30HK x 0.82 See Page 1 for System Watts for all outputs											

CW06XXPC 40L 35K WD XX CL XX

CANDLEPOWER CURVE TEST SP-01290_M-40L	INTENSITY CANDELA 0° AZIMUTH	ZONAL LUMENS	SINGLE UNIT: PERFORMANCE DIRECT FOOTCANDLES BASED ON DOWNLIGHT ONLY				MULTIPLE UNITS: PERFORMANCE 80/50/20% REFLECTANCES INITIAL FOOTCANDLES AND WATTS PER SQUARE FOOT					
			Mounting Height AFF	FC at Center on Floor	Beam Diameter	FC at Beam Edge	Ceiling Height	Fixture Spacing	RCR 2		RCR 4	
	0°	0° - 10° 319 11%	8'	54 fc	7.9'	20 fc	14'	6'	82	0.77	72	0.77
	0°	0° - 20° 1077 37%	10'	35 fc	9.8'	13 fc	18'	8'	41	0.38	35	0.38
	5°	0° - 30° 1921 67%	12'	24 fc	11.8'	9 fc	22'	10'	31	0.29	21	0.23
	15°	0° - 40° 2597 90%	14'	18 fc	13.8'	6 fc	Delivered Illuminance Rating: (DIR)		106 FC per W/Sq. Ft.		93 FC per W/Sq. Ft.	
	25°	0° - 60° 2851 99%	16'	14 fc	15.7'	5 fc	2' Suspension Length to luminous aperture Square rooms used for multiple units: RCR 2: Length & Width = Ceiling Ht. - 4.5' x 5.00 RCR 4: Length & Width = Ceiling Ht. - 4.5' x 2.50 * Average Footcandles at 2.5' Above Floor					
	35°	0° - 80° 2870 99%	20'	9 fc	19.7'	3 fc						
	45°	0° - 90° 2873 100%	24'	6 fc	23.6'	2 fc						
	55°	0° - 90° 2873 100%	28'	4 fc	27.5'	2 fc						
	90°	2	Total 2885 100%									
	Delivered Lumens: 2885 CP at 0° (Nadir): 3480 Beam Angle: 52° Lumen Multiplier: 10L x 0.25, 15L x 0.36, 20L x 0.50, 30L x 0.75 Luminaire Watts: 27.2 Spacing Ratio: 0.78 CCT Multiplier: 27K x 0.97, 30K x 0.98, 40K x 1.04 LER: 106.07 CRI: 80 27HK x 0.78, 30HK x 0.83 See Page 1 for System Watts for all outputs											





6" ROUND DIRECT

GAMMA SERIES / PHOTOMETRIC DATA

CW06XXPC 40L 35K XW XX CL XX

CANDLEPOWER CURVE TEST SP-01078	INTENSITY CANDELA 0° AZIMUTH	ZONAL LUMENS		SINGLE UNIT: PERFORMANCE DIRECT FOOTCANDLES BASED ON DOWNLIGHT ONLY				MULTIPLE UNITS: PERFORMANCE 80/50/20% REFLECTANCES INITIAL FOOTCANDLES AND WATTS PER SQUARE FOOT							
		0° - 10°	205	7%	Mounting Height AFF	FC at Center on Floor	Beam Diameter	FC at Beam Edge	Fixture Spacing	RCR 1		RCR 3			
	0°	2156													
	5°	2123													
	15°	2021			6'	60 fc	9.2'	15 fc	14"	8"	47	0.44	40	0.44	
	25°	1842			8'	34 fc	12.3'	8 fc	18"	10"	27	0.25	20	0.22	
	35°	1303			10'	22 fc	15.4'	5 fc	22"	12"	19	0.18	19	0.20	
	45°	287			12'	15 fc	18.5'	4 fc	Delivered Illuminance Rating: (DIR) 108 FC per W/Sq. Ft. 92 FC per W/Sq. Ft. 2' Suspension Length to luminous aperture Square rooms used for multiple units: RCR 1: Length & Width = Ceiling Ht. - 4.5' x 10.00 RCR 3: Length & Width = Ceiling Ht. - 4.5' x 3.33 * Average Footcandles at 2.5' Above Floor						
	55°	28			14'	11 fc	21.5'	3 fc							
	90°	0			16'	8 fc	24.6'	2 fc							
					20'	5 fc	30.8'	1 fc							
					24'	4 fc	36.9'	1 fc							
				Total	2752	100%									

Delivered Lumens: 2752
Luminaire Watts: 27.4
LER: 100.44

CP at 0° (Nadir): 2156
CRI: 80

Beam Angle: 75°
Spacing Ratio: 1.14

Lumen Multiplier: 10L x 0.25, 15L x 0.37, 20L x 0.50, 30L x 0.75
CCT Multiplier: 27K x 0.97, 30K x 0.98, 40K x 1.04
27HK x 0.78, 30HK x 0.82
See Page 1 for System Watts for all outputs



COLOR OPTIONS - POWDER COAT PAINT FINISHES

NOTE: NO PRINTED IMAGE CAN EQUAL THE EXACT COLOR OF FINISH ON METAL.
SEE INDIVIDUAL SPECIFICATION SHEETS OR CONSULT FACTORY FOR ADDITIONAL INFORMATION.



STANDARD CORD / STEM / CANOPY FINISHES

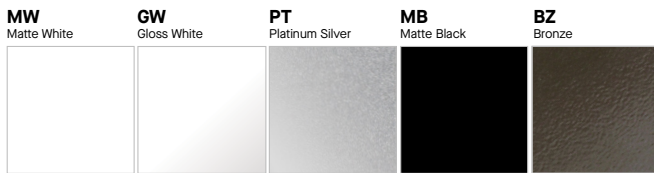
FIXTURE COLOR	STANDARD CORD COLOR	STANDARD CANOPY / STEM COLOR
Matte White, Textured White	Matte White	Matte White
Gloss White	Matte White	Gloss White
Matte Black, Textured Black	Matte Black	Matte Black
All Others	Matte Black	Same Color as Fixture
Custom Color	Contact Factory	Contact Factory

PAINT TIMES

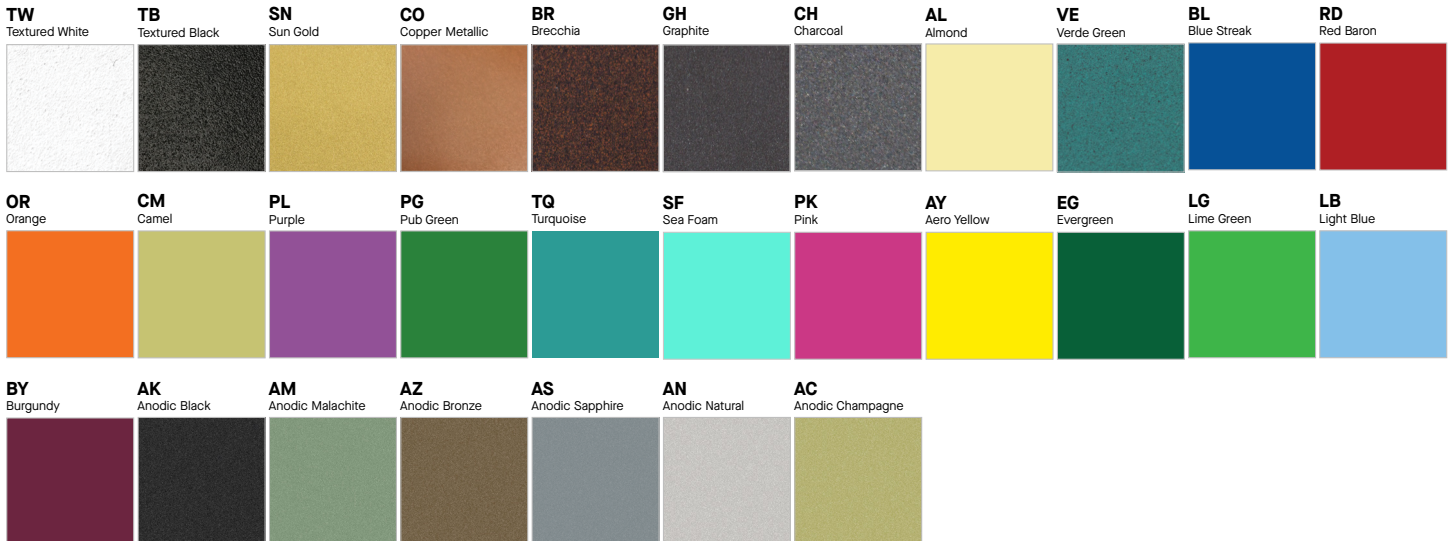
TIER	COST	AVERAGE PAINT TIME*
Tier 1 - Standard Finishes	\$	⌚
Tier 2 - Typical Finishes	\$\$	⌚⌚
Custom Color	Contact Factory	Contact Factory

*CONTACT FACTORY FOR SPECIFIC PRODUCT LEAD TIMES

TIER 1 - STANDARD FINISHES



TIER 2 - TYPICAL FINISHES



CUSTOM COLOR FINISHES

CONTACT FACTORY

CC
Custom Color



*UNAVAILABLE FOR WET LOCATION

