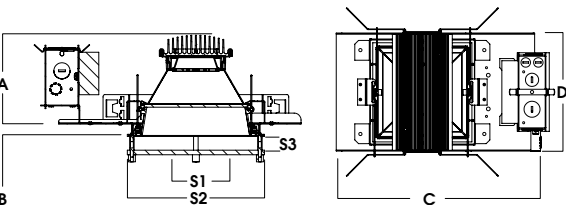
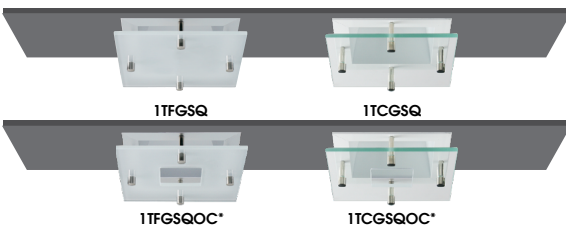
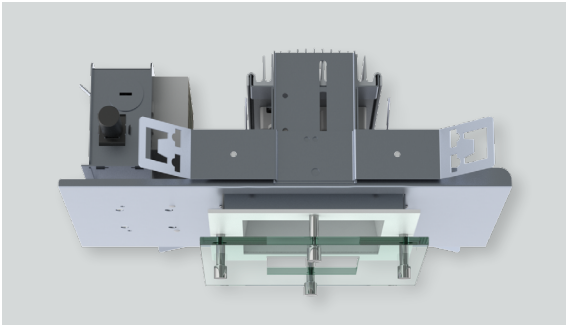




# 4" ILLUMITECH DECORATIVE ACCENT OS SERIES / 4500 LUMENS MAX



A	B	C	D	S1	S2	S3*
4.9	0.625	14.2	7.9	3.0	6.0	.75
124.5 mm	15.9 mm	360.7 mm	200.7 mm	76.2 mm	152.4 mm	19.05 mm

## SGE4SQLEDOS - DECORATIVE TRIM / NON-IC RATED

### APPLICATION

Illumitech decorative accent LED series creates ceiling brightness and visual interest while delivering performance illumination.

### FEATURES

Decorative accent elements mechanically attach to reflector trim. Two-stage optical system for smooth light distribution. Zhaga International Standard LED module for ease of maintenance and replacement. Shallow plenum design. Tool-less LED module, driver and J-Box access. Multi-Bar mounting brackets. BH27 Standard mounting bars included. Posi-lock trim retention torsion springs. Integral 0.625" collar.

### TRIM FINISH

A variety of powdercoat and anodized finishes are available. Matte white trim and matching self-flange is standard.

### ELECTRONICS

LED module features high brightness white Osram LEDs. 3-step MacAdam Ellipse binning and CRI 84 minimum. Full range of electronic 120V/277V and dimming drivers.

### CONSTRUCTION

Housing/frame constructed of #20 ga. galvanized steel to resist corrosion. Decorative glass is fabricated and tempered. Passive machined aluminum heatsink.

### CODE COMPLIANCE

BAA Compliant. Non-IC rated. ETL certified to meet US and Canadian standards. Suitable for dry or damp locations. Optional Wet location. LM79/LM80/TM21 data available. Manufactured and tested to UL standards No. 1598/8750.

WATTAGE TO LUMENS UPDATE					
CURRENT PART NUMBER EXAMPLE	PREVIOUS PART NUMBER EXAMPLE	SOURCE LUMENS <sup>1</sup>	DELIVERED LUMENS <sup>2</sup>	SYSTEM WATTS	LPW
SGE4SQLEDOS10L	SGE4SQLEDOS14W	1100	665	13	53
SGE4SQLEDOS20L	SGE4SQLEDOS25W	2000	877	15	58
SGE4SQLEDOS30L	SGE4SQLEDOS35W	3000	1087	22	49
SGE4SQLEDOS45L	N/A	4500	1623	30	55

SERIES	LUMENS <sup>1</sup>	CCT	DRIVER / VOLTAGE <sup>3</sup>	OPTIONS <sup>5</sup>	TRIM	FINISH	TRIM OPTIONS			
SGE4SQLEDOS	10L 1100 Lm	27K 2700K	E Electronic Driver DS10 10%, 0-10V DO10 1%, 0-10V DS2W1 1%, ELV/MLV, 120V DLTE1 1% Lutron® 2-Wire Forward Phase, 120V DL3E 1% Lutron® EcoSystem®, Face EL10 1%, eldoLED ED01 0.1%, eldoLED DALI DALI Control DMXS <sup>4</sup> DMX Standard Configuration DMXC <sup>4</sup> DMX Non-Standard Custom	1 120V 2 277V	BH27 <sup>6</sup> 27" Solid Bars H12 12" - 24" Expandable Bars H06 6" - 12" Expandable Bars CB24 24" C-Channel Bars FS Fusing EB Fixture Painted Black CR Corrosion Resistant PR <sup>7</sup> Deep Ceiling Extension GR Goof Ring ZIG <sup>9</sup> ZigBee Module BLU <sup>9</sup> Bluetooth LE EM <sup>9</sup> 7W Emergency Battery Test Switch Remote AMB Anti-Microbial Finish	CA0244OS	MW <sup>10</sup> Matte White	SO <sup>12</sup> Micro Prism Solite™ Lens WL Wet Location PF <sup>13</sup> Polished Flange AMB Anti-Microbial Finish		
	20L 2000 Lm	30K 3000K					MB Matte Black		DECORATIVE TRIM	
	30L 3000 Lm	35K 3500K					PT Platinum Silver		1TFGSQ Square Tier Frosted Glass	1TCGSQ Square Tier Clear Glass
	45L 4500 Lm	40K 4000K					OB Bronze AZ Anodized Champagne AZ Anodized Bronze AK Anodized Black AM Anodized Malachite SN Sun Gold CO Copper Metallic GH Graphite CC <sup>11</sup> Custom Color		1TFGSQOC Square Open Center Tier Frosted Glass	1TCGSQOC Square Open Center Tier Clear Glass

EXAMPLE: SGE4SQLEDOS20L30KE1FS/CA0244OSMWSO1TFGSQOC

NOTES:  
1 Nominal Source Lumens at 35K 2 Nominal Delivered Lumens 84 CRI at 35K with SO 1TFGSQ 3 Contact Factory for Additional Options 4 Contact Factory 5 See Product Options Page for Details 6 Standard Bar Hangers  
7 Contact Factory 8 Order DS101/2 When Specifying ZIG or BLU 9 Standard EM 10 Standard Finish 11 Contact Factory for Special Finishes 12 Required 13 Flange and Reflector Same Finish



PROJECT: \_\_\_\_\_  
TYPE: \_\_\_\_\_



Dimensions and values shown are nominal. Spectrum Lighting continually works to improve products and reserves the right to make changes which may alter the performance or appearance of products.

# 4" ILLUMITECH DECORATIVE ACCENT OS SERIES / PHOTOMETRIC DATA

recessed  
fixtures



SGE4SQLEDOS 30L 35K DS101 CA0422OS SO 1TFGSQ

CANDLEPOWER CURVE TEST SP-00913_M-20L	INTENSITY CANDELA 0° AZIMUTH	ZONAL LUMENS	SINGLE UNIT: PERFORMANCE INITIAL FOOTCANDLES BASED ON IES BEAM ANGLE				MULTIPLE UNITS: PERFORMANCE 80/50/20% REFLECTANCES INITIAL FOOTCANDLES AND WATTS PER SQUARE FOOT								
			Mounting Height AFF	FC at Center on Floor	Beam Diameter	FC at Beam Edge	Ceiling Height	Fixture Spacing	RCR 3		RCR 5				
	0.00°	0.00°	0° - 10°	151	9%	5.5'	56 fc	4.1'	23 fc	9'	4'	75	1.58	63	1.58
	0.00°	1,693	0° - 20°	468	29%	6.5'	40 fc	4.8'	17 fc	12'	4'	89	1.89	81	2.05
	5.00°	1,628	0° - 30°	782	48%	7.5'	30 fc	5.5'	12 fc	16'	6'	34	0.72	26	0.65
	10.00°	1,421	0° - 40°	1,048	65%	8.5'	23 fc	6.3'	10 fc	Delivered Illuminance Rating: (DIR)		47 FC per W/Sq. Ft.		40 FC per W/Sq. Ft.	
	15.00°	1,123	0° - 60°	1,390	86%	10.0'	17 fc	7.4'	7 fc	Recessed Mounting Square rooms used for multiple units: - RCR 3: Length & Width = Ceiling Ht. -2.5' x 3.33 - RCR 5: Length & Width = Ceiling Ht. -2.5' x 2.00 + Average Footcandles at 2.5' Above Floor					
	20.00°	856	0° - 80°	1,575	97%	12.0'	12 fc	8.8'	5 fc						
	30.00°	532	0° - 90°	1,610	99%	14.0'	9 fc	10.3'	4 fc						
	40.00°	324	Total	1,623	100%	16.0'	7 fc	11.8'	3 fc						
	50.00°	195													
	60.00°	131													
	70.00°	91													
	80.00°	58													
90.00°	6														

Delivered Lumens: **1,623**  
Luminaire Watts: **29.6**  
LER: **54.83**

CP at 0deg (Nadir): **1,693**  
CRI: **80+**

Beam Angle: **40.44**  
Spacing Ratio: **0.63**

Lumen Multiplier: 10L x 0.41, 15L x 0.52, 20L x 0.67  
CCT Multiplier: 27K x 0.89, 30K x 0.95, 40K x 1.03

SGE4SQLEDOS 30L 35K DS101 CA0422OS SO 1TCGSQ

CANDLEPOWER CURVE TEST SP-00912_M-30L	INTENSITY CANDELA 0° AZIMUTH	ZONAL LUMENS	SINGLE UNIT: PERFORMANCE INITIAL FOOTCANDLES BASED ON IES BEAM ANGLE				MULTIPLE UNITS: PERFORMANCE 80/50/20% REFLECTANCES INITIAL FOOTCANDLES AND WATTS PER SQUARE FOOT								
			Mounting Height AFF	FC at Center on Floor	Beam Diameter	FC at Beam Edge	Ceiling Height	Fixture Spacing	RCR 2		RCR 4				
	0.00°	0.00°	0° - 10°	155	7%	5.5'	53 fc	6.1'	18 fc	9'	4'	125	1.79	105	1.79
	0.00°	1,613	0° - 20°	591	28%	6.5'	38 fc	7.2'	13 fc	12'	6'	59	0.84	49	0.84
	5.00°	1,609	0° - 30°	1,136	53%	7.5'	29 fc	8.3'	10 fc	16'	10'	22	0.32	14	0.23
	10.00°	1,595	0° - 40°	1,512	71%	8.5'	22 fc	9.4'	7 fc	Delivered Illuminance Rating: (DIR)		70 FC per W/Sq. Ft.		58 FC per W/Sq. Ft.	
	15.00°	1,550	0° - 60°	1,931	91%	10.0'	16 fc	11.0'	5 fc	Recessed Mounting Square rooms used for multiple units: - RCR 2: Length & Width = Ceiling Ht. -2.5' x 5.00 - RCR 4: Length & Width = Ceiling Ht. -2.5' x 2.50 + Average Footcandles at 2.5' Above Floor					
	20.00°	1,398	0° - 80°	2,103	99%	12.0'	11 fc	13.2'	4 fc						
	30.00°	720	0° - 90°	2,121	100%	14.0'	8 fc	15.4'	3 fc						
	40.00°	352	Total	2,130	100%	16.0'	6 fc	17.6'	2 fc						
	50.00°	249													
	60.00°	156													
	70.00°	81													
	80.00°	33													
90.00°	3														

Delivered Lumens: **2,130**  
Luminaire Watts: **29.6**  
LER: **71.96**

CP at 0deg (Nadir): **1,613**  
CRI: **80+**

Beam Angle: **57.72**  
Spacing Ratio: **0.93**

Lumen Multiplier: 10L x 0.41, 15L x 0.52, 20L x 0.67  
CCT Multiplier: 27K x 0.89, 30K x 0.95, 40K x 1.03