

3" ROUND DIRECT PICO SERIES



C0310XT - WALL MOUNT

APPLICATION

3" round x 10" high XT series direct downlight cylinder luminaire.

FEATURES

Spectrum's Cylinder series provides traditional architectural style with high performance and energy efficient illumination. Rugged design with flexible mounting, finish and LED options make these extremely versatile fixtures. Integral LED driver. Quick change LED module with interchangeable optics for job site flexibility and fixture upgrade.

FINISH

Multi-stage polyester powder-coat process applied on our dedicated paint lines. See mounting and color pages for standard finishes. All exposed materials are chromate pretreated to resist corrosion.

ELECTRONICS

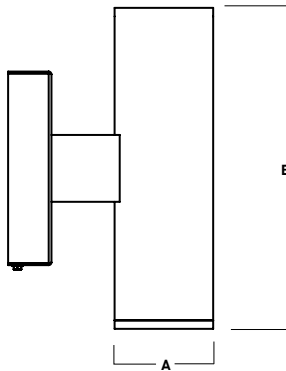
LED system features Xicato LED module with proprietary phosphor technology that provides consistent stable color with CCT control of +/- 100K over life of the light engine. Base CRI is 83 with 2-step MacAdam Ellipse binning. High CRI is 98 with 1 x 2-step MacAdam Ellipse binning. Variety of electronic 120V/277V and dimming drivers.

CONSTRUCTION

Fabricated seamless aluminum fixture housing. Specular primary reflector provides high efficiency illumination. Stainless steel hardware with galvanized brackets to resist corrosion.

CODE COMPLIANCE

BAA compliant. ETL certified to meet US and Canadian standards. Suitable for dry or damp locations. Wet Location Option. Manufactured and tested to UL standards No. 1598/8750.



A	B
3.3 83.8 mm	10.6 269.2 mm

Fixture Weight: 4.5 lbs

LUMENS / WATTAGE DATA

PART NUMBER	SOURCE LUMENS ¹	DELIV-ERED LUMENS ²	SYSTEM WATTS ³	LPW
C0310XT7L	700	506	6.2	82
C0310XT10L	1000	675	9.1	74

SERIES	LUMENS ¹	CCT	OPTICS	DRIVER / DIMMING ⁵	OPTIONS ⁶	MOUNTING ¹⁰	FINISH ¹¹
C0310XT	7L 700 Lm	83 CRI	XN ⁴ 12°	EX Electronic Driver, 120V/277V DS10X 10%, 0-10V, 120V/277V DS2W1 ELV/MLV, 120V	WL Wet Location CR Corrosion Resistant	WM3 Wall Mount 3" Extension	MW ¹² Matte White MB ¹² Matte Black PT ¹² Platinum Silver CC Custom Color
	10L 1000 Lm	27K 2700K 30K 3000K 35K 3500K 40K 4000K	ND 30° MD 33° WD 38°				
		98 CRI					
		27HK 2700K 30HK 3000K 35HK 3500K 40HK 4000K					
					LENS	EMERGENCY BATTERY OPTIONS	
					NL ⁷ No Lens GL ⁸ Clear Glass Lens SO ⁹ Micro Prism Solite™ Lens	EMRM 7W Remote EM EMEN 7W Remote with Enclosure	

EXAMPLE: C0310XT10L30KNDEX/WL/GL/WM3/MW

NOTES:

¹ Nominal Source Lumens At Any CCT ² Nominal Delivered Lumens at 83 CRI at Any CCT with MD-SO ³ At 83 CRI ⁴ XN not available with HK ⁵ Contact Factory for Additional Options
⁶ See Product Options Page for Details ⁷ Not Available with WL ⁸ Standard Lens for XN, ND ⁹ Standard Lens for MD, WD ¹⁰ See Mounting Page for Details on Components and Finishes
¹¹ Reference Color Sheet Located on Product Webpage for Full List of Available Colors/Consult Factory for Special Finishes ¹² Standard Finishes



PROJECT: _____
 TYPE: _____



Dimensions and values shown are nominal. Spectrum Lighting continually works to improve products and reserves the right to make changes which may alter the performance or appearance of products.

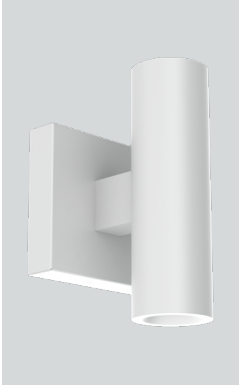
3" ROUND DIRECT

PICO SERIES / FIXTURE OPTIONS

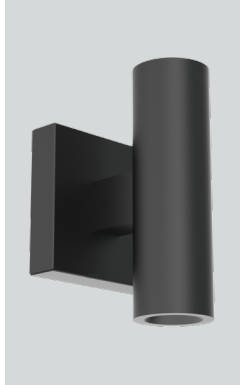


STANDARD FINISHES

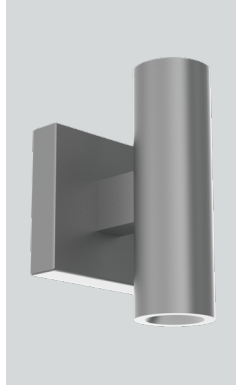
MW
MATTE WHITE



MB
MATTE BLACK

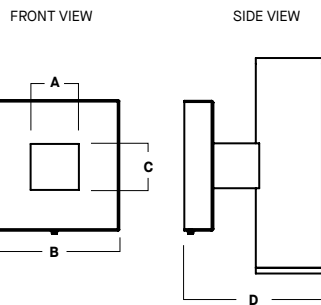
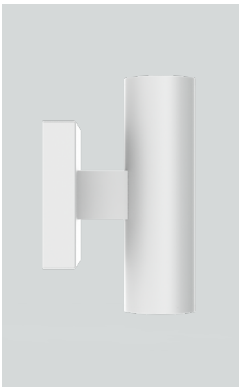


PT
PLATINUM SILVER



WALL MOUNT DETAIL

WM3
WALL MOUNT 3" EXTENSION



A	B	C	D
1.4	6.4	2.2	6.3
35.6 mm	162.6 mm	55.9 mm	160.0 mm

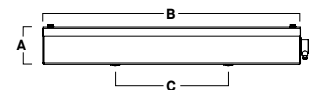
EMERGENCY BATTERY OPTIONS

EMRM* - 7W REMOTE EMERGENCY BATTERY
(50' MAX)



A	B	C
1.3	12.6	13.0

EMEN* - 7W REMOTE EMERGENCY BATTERY
WITH ENCLOSURE (50' MAX)



A	B	C
2.0	17.0	6.2

*OTHER EM BATTERY SIZES AVAILABLE, CONSULT FACTORY

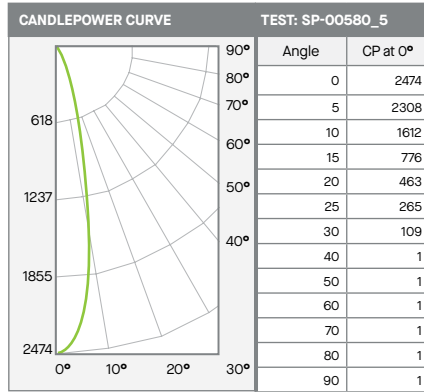


3" ROUND DIRECT

PICO SERIES / PHOTOMETRIC DATA



CO310XT-10LxxK-NDEX-GLxxMW



ZONAL LUMENS		
0-10	196	33%
0-20	440	74%
0-30	568	95%
0-40	590	99%
0-60	592	99%
0-80	594	100%
0-90	595	100%
Total Lumens	595	100%

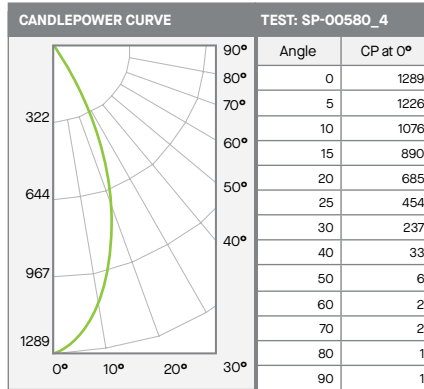
10L NARROW - 83 CRI

SINGLE UNIT: PERFORMANCE INITIAL FOOTCANDLES AND BEAM ANGLE DIAMETERS			
Mounting Height*	FC at Center	Diameter of Beam**	FC at Beam**
5.5'	82	2.4'	39
6.5'	59	2.8'	28
7.5'	44	3.3'	21
8.5'	34	3.7'	16
10.0'	25	4.3'	12
12.0'	17	5.2'	8
14.0'	13	6.1'	6
16.0'	10	6.9'	5

* From aperture to horizontal surface below.
** At IESNA defined Beam Angle, to 50% Max. CP.

Delivered Lumens: 595 CP @ 0° (Nadir): 2474 Spacing Ratio: 0.42
 Luminaire Watts: 9.1 Beam Angle: 24.5° Output Multipliers: 7L x 0.75
 LER: 65 CRI: 83

CO310XT-10LxxK-MDEX-SOxxMW



ZONAL LUMENS		
0-10	113	17%
0-20	364	54%
0-30	580	86%
0-40	654	97%
0-60	669	99%
0-80	673	100%
0-90	675	100%
Total Lumens	675	100%

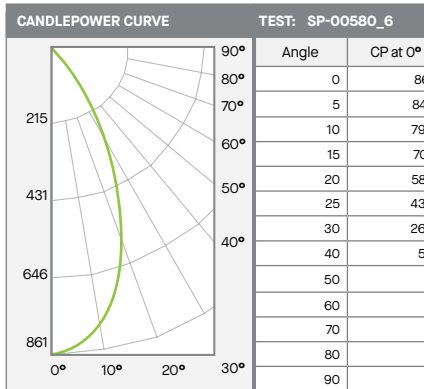
10L MEDIUM - 83 CRI

SINGLE UNIT: PERFORMANCE INITIAL FOOTCANDLES AND BEAM ANGLE DIAMETERS			
Mounting Height*	FC at Center	Diameter of Beam**	FC at Beam**
5.5'	43	4.2'	19
6.5'	31	5.0'	13
7.5'	23	5.7'	10
8.5'	18	6.5'	8
10.0'	13	7.6'	6
12.0'	9	9.1'	4
14.0'	7	10.7'	3
16.0'	5	12.2'	2

* From aperture to horizontal surface below.
** At IESNA defined Beam Angle, to 50% Max. CP.

Delivered Lumens: 675 CP @ 0° (Nadir): 1289 Spacing Ratio: 0.68
 Luminaire Watts: 9.1 Beam Angle: 41.7° Output Multipliers: 7L x 0.75
 LER: 74 CRI: 83

CO310XT-10LxxK-WDEX-SOxxMW



ZONAL LUMENS		
0-10	79	13%
0-20	276	46%
0-30	478	80%
0-40	571	96%
0-60	593	99%
0-80	596	100%
0-90	597	100%
Total Lumens	597	100%

10L WIDE - 83 CRI

SINGLE UNIT: PERFORMANCE INITIAL FOOTCANDLES AND BEAM ANGLE DIAMETERS			
Mounting Height*	FC at Center	Diameter of Beam**	FC at Beam**
5.5'	28	5.1'	12
6.5'	20	6.1'	8
7.5'	15	7.0'	6
8.5'	12	7.9'	5
10.0'	9	9.3'	4
12.0'	6	11.2'	2
14.0'	4	13.1'	2
16.0'	3	14.9'	1

* From aperture to horizontal surface below.
** At IESNA defined Beam Angle, to 50% Max. CP.

Delivered Lumens: 597 CP @ 0° (Nadir): 861 Spacing Ratio: 0.8
 Luminaire Watts: 9.1 Beam Angle: 50.0° Output Multipliers: 7L x 0.75
 LER: 66 CRI: 83

