



6" ROUND DIRECT
WET LOCATION
 GAMMA SERIES

PROJECT: _____
 QUANTITY: _____ TYPE: _____



CW0606PC



CW0612PC



CW0618PC

SERIES	LUMENS ¹	CCT	OPTICS	DRIVER / DIMMING ²	LENS	MOUNTING ³	FINISH ⁴			
CW0606PC 6" x 6"	10L 700 Lm	80 CRI	ND 14°	EX Electronic Driver, 120V/277V	CL Clear Lens	WM Wall Mount	MW ⁵ Matte White			
	15L 1050 Lm							27K 2700K	MD 31°	SO Micro Prism Solite™ Lens
CW0612PC 6" x 12"	20L 1400 Lm	90 CRI	WD 52°	DO10X 1%, 0-10V, 120V/277V			PT ⁵ Platinum Silver			
	30L 2100 Lm							30K 3000K	XW 75°	CC Custom Color
	40L 2850 Lm							35K 3500K		
CW0618PC 6" x 18"		27HK 2700K				EMER. BAT. OPTIONS	See Page 4 for Full Range of Color Options (83-90165)			
		30HK 3000K			EMRM 7W Remote EM					
		35HK 3500K			EMEN 7W Remote EM with Enclosure					
		40HK 4000K								

EXAMPLE: CW0606PC15L35KNDEX/CL/WM/MW

NOTES:
 1 Nominal Delivered Lumens at 3500K 2 Consult Factory for Additional Options 3 See Mounting Page for Details on Components and Finishes
 4 See Color Page for More Options/Consult Factory for Special Finishes 5 Standard Finishes



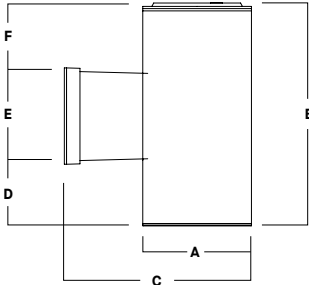


6" ROUND DIRECT WET LOCATION GAMMA SERIES

LUMENS / WATTAGE DATA			
PART NUMBER	DELIVERED LUMENS ¹	SYSTEM WATTS	LPW
CW0612PC 10L	707	6.5	109
CW0612PC 15L	1046	9.5	110
CW0612PC 20L	1413	12.9	110
CW0612PC 30L	2120	19.9	107
CW0612PC 40L	2827	27.4	103

¹ Nominal Delivered Lumens at 3500K, 80 CRI, Medium Optic with Clear Lens

DIMENSIONS



Dimensioned with **CW0612PC**

SERIES	A	B	C	D	E	F
CW0606PC	6.1	6.4	10.5	0.4	5.4	0.6
CW0612PC	6.1	12.4	10.5	3.4	5.4	3.6
CW0618PC	6.1	18.5	10.5	6.4	5.4	6.6

APPLICATION

The Gamma Family of Cylinders are a robust offering of point source LED luminaires featuring high efficacies, an assortment of optical control, and installation flexibility, which make them suitable for a wide range of commercial and institutional applications.

ELECTRONICS

Solid-state light engine available in various color temperatures and lumen outputs. Specifiable in 2700K, 3000K, 3500K, 4000K in CRI 80 (Typ.), or 2700K, 3000K, 3500K, 4000K in CRI 90 (Typ.), color accuracy ≤ 3 SDCM. Selection of integral electronic constant current, dimmable drivers available, power factor > 0.9 (Typ). Driver and light engine are field serviceable for future replacement or upgrades. Emergency battery options provide 7W for 90 minutes.

CONSTRUCTION

Seamless cylinder body machined from 6063 extruded aluminum. Trim and top cap are die-cast aluminum. Self-locating trim is secured with self-sealing stainless steel hardware. Nitrile rubber o-rings provide additional ingress protection from water. Passive aluminum heatsink optimized for emitter life and performance. Specular reflectors offered in variety of beam spreads. Lens type must be specified.

MOUNTING

Mounting bracket for direct installation with 4" octagonal junction boxes. Single-piece, seamless die-cast aluminum wall arm. See mounting page for additional information. Contact factory for special installation circumstances.

FINISH

Multi-stage polyester powder-coat process applied on our in-house finishing department. Custom colors also available (contact factory with RAL#). Wall arm will match cylinder finish specification.

CODE COMPLIANCE

ETL Listed. Suitable for wet locations with operation in ambient conditions up to 25°C. 5 year limited warranty on all components. Proudly designed and manufactured in Massachusetts, USA.

SERIES SIZES

CW0606PC



CW0612PC



CW0618PC



STANDARD FINISHES SHOWN WITH CW0612PC

MW
Matte White



MB
Matte Black

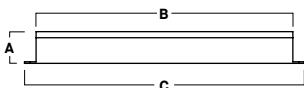


PT
Platinum Silver



EMERGENCY BATTERY OPTIONS

EMRM* - 7W REMOTE EMERGENCY BATTERY
(50" MAX)



A	B	C
1.3	12.6	13.0

EMEN* - 7W REMOTE EMERGENCY BATTERY
WITH ENCLOSURE (50" MAX)



A	B	C
2.0	17.0	6.2

*OTHER EM BATTERY SIZES AVAILABLE. CONSULT FACTORY





6" ROUND DIRECT

GAMMA SERIES / PHOTOMETRIC DATA

CW06XXPC 40L 35K ND XX CL XX

CANDLEPOWER CURVE TEST SP-01077	INTENSITY CANDELA 0° AZIMUTH	ZONAL LUMENS	SINGLE UNIT: PERFORMANCE DIRECT FOOTCANDLES BASED ON DOWNLIGHT ONLY				MULTIPLE UNITS: PERFORMANCE 80/50/20% REFLECTANCES INITIAL FOOTCANDLES AND WATTS PER SQUARE FOOT						
			Mounting Height AFF	FC at Center on Floor	Beam Diameter	FC at Beam Edge	Ceiling Height	Fixture Spacing	RCR 4		RCR 6		
	0°	0° - 10° 894 31%	10'	173 fc	2.4'	85 fc	18'	3'	271	2.81	272	3.12	
	0°	0° - 20° 1453 50%	12'	120 fc	2.9'	59 fc	22'	4"	156	1.61	156	1.79	
	5°	0° - 30° 2001 69%	14'	88 fc	3.4'	43 fc	26'	5"	101	1.04	101	1.16	
	15°	0° - 40° 2620 90%	16'	68 fc	3.9'	33 fc	Delivered Illuminance Rating: (DIR)		97 FC per W/Sq. Ft.		87 FC per W/Sq. Ft.		
	25°	0° - 60° 2890 100%	20'	43 fc	4.8'	21 fc	3' Suspension Length to luminous aperture Square rooms used for multiple units: RCR 4: Length & Width = Ceiling Ht. - 5.5' x 2.50 RCR 6: Length & Width = Ceiling Ht. - 5.5' x 1.66 * Average Footcandles at 2.5' Above Floor ** Exceeds Spacing Ratio by 1% *** Exceeds Spacing Ratio by 2%						
	35°	0° - 80° 2893 100%	24'	30 fc	5.8'	15 fc							
	45°	0° - 90° 2895 100%	28'	22 fc	6.7'	11 fc							
	55°	6	Total	32'	17 fc	7.7'	8 fc						
	90°	1											
	Delivered Lumens: 2895 Luminaire Watts: 27.4 LER: 105.66		CP at 0° (Nadir): 17337 CRI: 80	Beam Angle: 14° Spacing Ratio: 0.24	Lumen Multiplier: 10L x 0.25, 15L x 0.37, 20L x 0.50, 30L x 0.75 CCT Multiplier: 27K x 0.97, 30K x 0.98, 40K x 1.04 27HK x 0.78, 30HK x 0.82	See Page 1 for System Watts for all outputs							

CW06XXPC 40L 35K MD XX CL XX

CANDLEPOWER CURVE TEST SP-01076	INTENSITY CANDELA 0° AZIMUTH	ZONAL LUMENS	SINGLE UNIT: PERFORMANCE DIRECT FOOTCANDLES BASED ON DOWNLIGHT ONLY				MULTIPLE UNITS: PERFORMANCE 80/50/20% REFLECTANCES INITIAL FOOTCANDLES AND WATTS PER SQUARE FOOT						
			Mounting Height AFF	FC at Center on Floor	Beam Diameter	FC at Beam Edge	Ceiling Height	Fixture Spacing	RCR 3		RCR 5		
	0°	0° - 10° 484 17%	8'	89 fc	4.4'	40 fc	14'	4'	172	1.75	164	1.90	
	0°	0° - 20° 1284 45%	10'	57 fc	5.5'	26 fc	18'	6'	65	0.66	52	0.60	
	5°	0° - 30° 1907 67%	12'	40 fc	6.5'	18 fc	22'	8'	39	0.40	31	0.36	
	15°	0° - 40° 2543 90%	14'	29 fc	7.6'	13 fc	Delivered Illuminance Rating: (DIR)		98 FC per W/Sq. Ft.		87 FC per W/Sq. Ft.		
	25°	0° - 60° 2814 100%	16'	22 fc	8.7'	10 fc	2' Suspension Length to luminous aperture Square rooms used for multiple units: RCR 3: Length & Width = Ceiling Ht. - 4.5' x 3.33 RCR 5: Length & Width = Ceiling Ht. - 4.5' x 2.00 * Average Footcandles at 2.5' Above Floor						
	35°	0° - 80° 2825 100%	20'	14 fc	10.9'	6 fc							
	45°	0° - 90° 2827 100%	24'	10 fc	13.1'	4 fc							
	55°	8	Total	28'	7 fc	15.3'	3 fc						
	90°	1											
	Delivered Lumens: 2827 Luminaire Watts: 27.4 LER: 103.18		CP at 0° (Nadir): 5721 CRI: 80	Beam Angle: 31° Spacing Ratio: 0.50	Lumen Multiplier: 10L x 0.25, 15L x 0.37, 20L x 0.50, 30L x 0.75 CCT Multiplier: 27K x 0.97, 30K x 0.98, 40K x 1.04 27HK x 0.78, 30HK x 0.82	See Page 1 for System Watts for all outputs							

CW06XXPC 40L 35K WD XX CL XX

CANDLEPOWER CURVE TEST SP-01290_M-40L	INTENSITY CANDELA 0° AZIMUTH	ZONAL LUMENS	SINGLE UNIT: PERFORMANCE DIRECT FOOTCANDLES BASED ON DOWNLIGHT ONLY				MULTIPLE UNITS: PERFORMANCE 80/50/20% REFLECTANCES INITIAL FOOTCANDLES AND WATTS PER SQUARE FOOT						
			Mounting Height AFF	FC at Center on Floor	Beam Diameter	FC at Beam Edge	Ceiling Height	Fixture Spacing	RCR 2		RCR 4		
	0°	0° - 10° 319 11%	8'	54 fc	7.9'	20 fc	14'	6'	82	0.77	72	0.77	
	0°	0° - 20° 1077 37%	10'	35 fc	9.8'	13 fc	18'	8'	41	0.38	35	0.38	
	5°	0° - 30° 1921 67%	12'	24 fc	11.8'	9 fc	22'	10'	31	0.29	21	0.23	
	15°	0° - 40° 2597 90%	14'	18 fc	13.8'	6 fc	Delivered Illuminance Rating: (DIR)		106 FC per W/Sq. Ft.		93 FC per W/Sq. Ft.		
	25°	0° - 60° 2851 99%	16'	14 fc	15.7'	5 fc	2' Suspension Length to luminous aperture Square rooms used for multiple units: RCR 2: Length & Width = Ceiling Ht. - 4.5' x 5.00 RCR 4: Length & Width = Ceiling Ht. - 4.5' x 2.50 * Average Footcandles at 2.5' Above Floor						
	35°	0° - 80° 2870 99%	20'	9 fc	19.7'	3 fc							
	45°	260	0° - 90° 2873 100%	24'	6 fc	23.6'	2 fc						
	55°	22	Total	28'	4 fc	27.5'	2 fc						
	90°	2											
	Delivered Lumens: 2885 Luminaire Watts: 27.2 LER: 106.07		CP at 0° (Nadir): 3480 CRI: 80	Beam Angle: 52° Spacing Ratio: 0.78	Lumen Multiplier: 10L x 0.25, 15L x 0.36, 20L x 0.50, 30L x 0.75 CCT Multiplier: 27K x 0.97, 30K x 0.98, 40K x 1.04 27HK x 0.78, 30HK x 0.83	See Page 1 for System Watts for all outputs							





6" ROUND DIRECT

GAMMA SERIES / PHOTOMETRIC DATA

CW06XXPC 40L 35K XW XX CL XX

CANDLEPOWER CURVE TEST SP-01078	INTENSITY CANDELA 0° AZIMUTH	ZONAL LUMENS		SINGLE UNIT: PERFORMANCE DIRECT FOOTCANDLES BASED ON DOWNLIGHT ONLY				MULTIPLE UNITS: PERFORMANCE 80/50/20% REFLECTANCES INITIAL FOOTCANDLES AND WATTS PER SQUARE FOOT							
		0° - 10°	205	7%	Mounting Height AFF	FC at Center on Floor	Beam Diameter	FC at Beam Edge	Ceiling Height	Fixture Spacing	RCR 1		RCR 3		
	0°	2156													
	5°	2123													
	15°	2021													
	25°	1842													
	35°	1303													
	45°	287													
	55°	28													
	90°	0													
		Total	2752	100%											
					6'	60 fc	9.2'	15 fc							
				8'	34 fc	12.3'	8 fc								
				10'	22 fc	15.4'	5 fc								
				12'	15 fc	18.5'	4 fc								
				14'	11 fc	21.5'	3 fc								
				16'	8 fc	24.6'	2 fc								
				20'	5 fc	30.8'	1 fc								
				24'	4 fc	36.9'	1 fc								
				Delivered Illuminance Rating: (DIR)				108 FC per W/Sq. Ft.		92 FC per W/Sq. Ft.					
				2' Suspension Length to luminous aperture Square rooms used for multiple units: RCR 1: Length & Width = Ceiling Ht. - 4.5' x 10.00 RCR 3: Length & Width = Ceiling Ht. - 4.5' x 3.33 * Average Footcandles at 2.5' Above Floor											

Delivered Lumens: 2752
Luminaire Watts: 27.4
LER: 100.44

CP at 0° (Nadir): 2156
CRI: 80

Beam Angle: 75°
Spacing Ratio: 1.14

Lumen Multiplier: 10L x 0.25, 15L x 0.37, 20L x 0.50, 30L x 0.75
CCT Multiplier: 27K x 0.97, 30K x 0.98, 40K x 1.04
27HK x 0.78, 30HK x 0.82
See Page 1 for System Watts for all outputs

