

PROJECT: \_\_\_\_\_  
 TYPE: \_\_\_\_\_



### 3" ROUND FLANGELESS SUPER SHALLOW IC NEW CONSTRUCTION

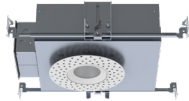
Spectrum's Infinium 3" recessed round downlight series features a deep shallow plenum housing and variety of trims for accent and general illumination.

NOMINAL LUMENS / WATTAGE DATA				
CURRENT PART NUMBER EXAMPLE	PREVIOUS PART NUMBER EXAMPLE	DELIVERED LUMENS <sup>1</sup>	SYSTEM WATTS	LPW
IF03RSN 007	N/A	537	5	99
IF03RSN 010	RDF03OC 10L	751	7	103
IF03RSN 015	N/A	1046	10	103

<sup>1</sup> Nominal Delivered Lumens at 835 DL FL GP MW

#### AVAILABLE HOUSING TYPE

IF03RSN IC - IC New Construction



HOUSING						HOUSING OPTIONS						
SERIES	TYPE	EMITTER	CRI/CCT	LUMENS	OPTIONS	DIMMING		MOUNTING		BATTERY		
IF03RSN	IC New Construction	PC	90 Minimum	007 537 Lm	PR 1.25" Ceiling Extension	N1 Non-Dimming Electronic Driver	D1 1% 0-10V	D3 1% ELV/MLV Phase-Cut (120V)	1 120V	2 277V	B1 Expandable Bar Hangers	ER 7W Remote Battery
			922 2200K	010 751 Lm								
			927 2700K	015 1046 Lm								
			930 3000K									
80 Minimum	Nominal Delivered Lumens at 835 DL FL GP MW											
827 2700K												
830 3000K												
835 3500K												
840 4000K												

#### AVAILABLE TRIM / MODULE TYPES



TRIM OPTIONS					SEPARATE ADDITIONAL ACCESSORIES	
TRIM TYPE	BEAM <sup>1</sup>	LENS	FINISH	OPTION		
DL Downlight	SP Spot (24°) NF Narrow Flood (28°) FL Flood (38°) WF Wide Flood (61°)	GN No Lens Not Available in Wet Location	MW Matte White MB Matte Black PT Platinum Silver CC Custom Color	WL Wet Location Requires GP or GC Lens	BAR HANGERS	
		GP Solite™ Micro Prism Lens			B2 27" Solid Bar Hangers	
		GC Clear Glass Lens			B4 24" C-Channel Bar Hangers	
WW Wall Wash	WF Wide Flood	LW Wall Wash Lens				

<sup>1</sup> Nominal Beam Angles Shown

EXAMPLE: IF03RSNICPC927007/D12B1/DLNFPGPMWWL

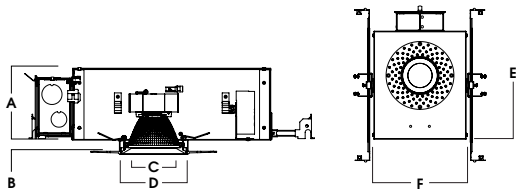
Dimensions and values shown are nominal. Spectrum Lighting continually works to improve products and reserves the right to make changes which may alter the performance or appearance of products.



## HOUSING DIMENSIONS

### IF03RSN IC - SUPER SHALLOW IC NEW CONSTRUCTION

IC rated frame-in kit for new construction with direct insulation contact and CCEA (Chicago Plenum) compatibility.



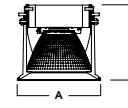
A	B	C	D	E	F
4.0	.625	2.5	3.8	13.2	9.5
101.6 mm	15.9 mm	63.5 mm	96.5 mm	335.3 mm	241.3 mm

Fixture Weight: 5.0 lbs

Ceiling Cutout: Ø 3<sup>7/8</sup>"

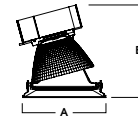
## TRIM / MODULE DATA

### DL - DOWNLIGHT MODULE



A	B
3.8	3.6
96.5 mm	91.4 mm

### WW - WALL WASH MODULE



A	B
3.8	4.1
96.5 mm	104.1 mm

## FEATURES

### APPLICATION

Versatile super shallow plenum 3" round recessed LED luminaire with a 4" deep IC housing, featuring downlight and wall wash flangeless trim options with insulated ceiling housing.

### FEATURES

Two-stage optical system for smooth low glare light distribution. Zhaga International Standard LED module for ease of maintenance and replacement. Shallow plenum design. Tool-less LED module, driver, and J-Box access. Multi-Bar mounting brackets. Expandable bar hangers with horizontal range of 14.2"-26", and vertical adjustment of 2.325". Posi-lock trim retention springs. Integral 0.625" collar, works with up to 1" ceiling. For thicker ceilings consult factory.

### TRIM FINISH

A variety of architectural powdercoat finishes are available. Trims available with and without lens.

### ELECTRONICS

LED module features high brightness Philips LEDs. 3-step MacAdam Ellipse binning and 80 and 90 CRI available. 0-10V or phase-cut dimming to 1%, standard. Variety of 120V/277V drivers available. 2200K closely resembles candle light or high pressure sodium lamps.

### CONSTRUCTION

Housing/frame constructed of #20 ga. galvanized steel to resist corrosion. Flangeless one piece die-cast aluminum trim is finished to specification. Passive machined aluminum heatsink.

### CODE COMPLIANCE

BAA Compliant. ETL certified to meet US and Canadian standards. Suitable for dry or damp locations. Optional Wet Location. Manufactured and tested to UL standards No. 1598/8750. City of Chicago Environmental Air (CCEA), and Insulated Ceiling (IC) options available.



# PHOTOMETRIC DATA - 3" ROUND DOWNLIGHT

IF03RSx IC 835 015 N11 DLSPGP MW

CANDLEPOWER CURVE TEST SP-00776_2_M-015L	INTENSITY CANDELA 0° AZIMUTH	ZONAL LUMENS	SINGLE UNIT: PERFORMANCE INITIAL FOOTCANDLES BASED ON IES BEAM ANGLE				MULTIPLE UNITS: PERFORMANCE 80/50/20% REFLECTANCES INITIAL FOOTCANDLES AND WATTS PER SQUARE FOOT							
			Mounting Height AFF	FC at Center on Floor	Beam Diameter	FC at Beam Edge	Ceiling Height	Fixture Spacing	RCR 3		RCR 5			
	0.00°	0° - 10°	278	26%	5.5'	122 fc	2.3'	61 fc	9'	2'	272	2.63	203	2.17
	0.00° 3,692	0° - 20°	649	61%	6.5'	87 fc	2.7'	44 fc	12'	4'	67	0.65	66	0.71
	5.00° 3,272	0° - 30°	893	84%	7.5'	66 fc	3.2'	33 fc	16'	6'	33	0.32	33	0.35
	10.00° 2,254	0° - 40°	1,003	94%	8.5'	51 fc	3.6'	26 fc	Delivered Illuminance Rating: (DIR)					
	15.00° 1,331	0° - 60°	1,045	98%	10.0'	37 fc	4.2'	18 fc	103 FC per W/Sq. Ft. 93 FC per W/Sq. Ft.					
	20.00° 795	0° - 80°	1,063	100%	12.0'	26 fc	5.1'	13 fc	Recessed Mounting					
	30.00° 335	0° - 90°	1,064	100%	14.0'	19 fc	5.9'	9 fc	Square rooms used for multiple units:					
	40.00° 63	Total	1,064	100%	16.0'	14 fc	6.8'	7 fc	- RCR 3: Length & Width = Ceiling Ht. -2.5' x 3.33					
	50.00° 21								- RCR 5: Length & Width = Ceiling Ht. -2.5' x 2.00					
	60.00° 16								+ Average Footcandles at 2.5' Above Floor					
	70.00° 8													
	80.00° 3													
90.00° 1														

Delivered Lumens: 1,064  
 Luminaire Watts: 10.2  
 LER: 104.31  
 CP at 0deg (Nadir): 3,692  
 CRI: 80  
 Beam Angle: 24  
 Spacing Ratio: 0.4  
 Lumen Multiplier: 07L x 0.40, 10L x 0.56  
 CCT Multiplier: 27K x 0.95, 30K x 0.98, 40K x 1.03

IF03RSx IC 835 015 DLNFGP MW

CANDLEPOWER CURVE TEST SP-00775_2_M-015L	INTENSITY CANDELA 0° AZIMUTH	ZONAL LUMENS	SINGLE UNIT: PERFORMANCE INITIAL FOOTCANDLES BASED ON IES BEAM ANGLE				MULTIPLE UNITS: PERFORMANCE 80/50/20% REFLECTANCES INITIAL FOOTCANDLES AND WATTS PER SQUARE FOOT							
			Mounting Height AFF	FC at Center on Floor	Beam Diameter	FC at Beam Edge	Ceiling Height	Fixture Spacing	RCR 3		RCR 5			
	0.00°	0° - 10°	245	23%	5.5'	98 fc	2.8'	49 fc	9'	2'	267	2.63	199	2.17
	0.00° 2,976	0° - 20°	625	59%	6.5'	70 fc	3.3'	35 fc	12'	4'	66	0.65	65	0.71
	5.00° 2,804	0° - 30°	876	83%	7.5'	53 fc	3.8'	26 fc	16'	6'	25	0.25	21	0.22
	10.00° 2,164	0° - 40°	992	94%	8.5'	41 fc	4.3'	21 fc	Delivered Illuminance Rating: (DIR)					
	15.00° 1,345	0° - 60°	1,033	98%	10.0'	30 fc	5.1'	15 fc	102 FC per W/Sq. Ft. 92 FC per W/Sq. Ft.					
	20.00° 778	0° - 80°	1,049	100%	12.0'	21 fc	6.1'	10 fc	Recessed Mounting					
	30.00° 326	0° - 90°	1,051	100%	14.0'	15 fc	7.1'	8 fc	Square rooms used for multiple units:					
	40.00° 53	Total	1,051	100%	16.0'	12 fc	8.1'	6 fc	- RCR 3: Length & Width = Ceiling Ht. -2.5' x 3.33					
	50.00° 20								- RCR 5: Length & Width = Ceiling Ht. -2.5' x 2.00					
	60.00° 13								+ Average Footcandles at 2.5' Above Floor					
	70.00° 7													
	80.00° 3													
90.00° 1														

Delivered Lumens: 1,051  
 Luminaire Watts: 10.2  
 LER: 103.04  
 CP at 0deg (Nadir): 2,976  
 CRI: 80  
 Beam Angle: 28.27  
 Spacing Ratio: 0.47  
 Lumen Multiplier: 07L x 0.40, 10L x 0.56  
 CCT Multiplier: 27K x 0.95, 30K x 0.98, 40K x 1.03

IF03RSx IC 835 015 N11 DLFLGP MW

CANDLEPOWER CURVE TEST SP-00774_2_M-015L	INTENSITY CANDELA 0° AZIMUTH	ZONAL LUMENS	SINGLE UNIT: PERFORMANCE INITIAL FOOTCANDLES BASED ON IES BEAM ANGLE				MULTIPLE UNITS: PERFORMANCE 80/50/20% REFLECTANCES INITIAL FOOTCANDLES AND WATTS PER SQUARE FOOT							
			Mounting Height AFF	FC at Center on Floor	Beam Diameter	FC at Beam Edge	Ceiling Height	Fixture Spacing	RCR 3		RCR 5			
	0.00°	0° - 10°	184	18%	5.5'	70 fc	3.8'	35 fc	9'	4'	55	0.54	49	0.54
	0.00° 2,104	0° - 20°	555	53%	6.5'	50 fc	4.5'	25 fc	12'	4'	65	0.65	63	0.71
	5.00° 1,989	0° - 30°	859	82%	7.5'	37 fc	5.2'	19 fc	16'	6'	25	0.25	20	0.22
	10.00° 1,705	0° - 40°	989	94%	8.5'	29 fc	5.9'	15 fc	Delivered Illuminance Rating: (DIR)					
	15.00° 1,344	0° - 60°	1,030	98%	10.0'	21 fc	6.9'	11 fc	100 FC per W/Sq. Ft. 90 FC per W/Sq. Ft.					
	20.00° 975	0° - 80°	1,045	100%	12.0'	15 fc	8.3'	7 fc	Recessed Mounting					
	30.00° 422	0° - 90°	1,046	100%	14.0'	11 fc	9.7'	5 fc	Square rooms used for multiple units:					
	40.00° 72	Total	1,046	100%	16.0'	8 fc	11.0'	4 fc	- RCR 3: Length & Width = Ceiling Ht. -2.5' x 3.33					
	50.00° 17								- RCR 5: Length & Width = Ceiling Ht. -2.5' x 2.00					
	60.00° 10								+ Average Footcandles at 2.5' Above Floor					
	70.00° 7													
	80.00° 3													
90.00° 1														

Delivered Lumens: 1,046  
 Luminaire Watts: 10.2  
 LER: 102.55  
 CP at 0deg (Nadir): 2,104  
 CRI: 80  
 Beam Angle: 38  
 Spacing Ratio: 0.6  
 Lumen Multiplier: 07L x 0.40, 10L x 0.56  
 CCT Multiplier: 27K x 0.95, 30K x 0.98, 40K x 1.03



# PHOTOMETRIC DATA - 3" ROUND DOWNLIGHT

IF03RSx IC 835 015 N11 DLWFGP MW

CANDLEPOWER CURVE TEST SP-00777_2_M-010L	INTENSITY CANDELA 0° AZIMUTH	ZONAL LUMENS	SINGLE UNIT: PERFORMANCE INITIAL FOOTCANDLES BASED ON IES BEAM ANGLE				MULTIPLE UNITS: PERFORMANCE 80/50/20% REFLECTANCES INITIAL FOOTCANDLES AND WATTS PER SQUARE FOOT									
			Mounting Height AFF	FC at Center on Floor	Beam Diameter	FC at Beam Edge	Ceiling Height	Fixture Spacing	RCR 2		RCR 4					
	0.00°	950	0° - 10°	90	9%	5.5'	31 fc	6.5'	16 fc	9'	4'	59	0.62	50	0.62	
	5.00°	936	0° - 20°	326	34%	6.5'	22 fc	7.7'	11 fc	12'	6'	27	0.29	24	0.29	
	10.00°	900	0° - 30°	624	65%	7.5'	17 fc	8.8'	8 fc	16'	10'	10	0.11	7	0.08	
	15.00°	839	0° - 40°	814	85%	8.5'	13 fc	10.0'	7 fc	Delivered Illuminance Rating: (DIR)		95 FC per W/Sq. Ft.		81 FC per W/Sq. Ft.		
	20.00°	769	0° - 60°	937	98%	10.0'	10 fc	11.8'	5 fc	Recessed Mounting Square rooms used for multiple units: - RCR 2: Length & Width = Ceiling Ht. -2.5' x 5.00 - RCR 4: Length & Width = Ceiling Ht. -2.5' x 2.50 + Average Footcandles at 2.5' Above Floor						
	30.00°	498	0° - 80°	957	100%	12.0'	7 fc	14.1'	3 fc							
	40.00°	157	0° - 90°	958	100%	14.0'	5 fc	16.5'	2 fc							
	50.00°	68	Total	958	100%	16.0'	4 fc	18.9'	2 fc							
	60.00°	26														
	70.00°	8														
	80.00°	2														
	90.00°	1														

Delivered Lumens: **958**  
Luminaire Watts: **10.2**  
LER: **93.92**

CP at 0deg (Nadir): **950**  
CRI: **80**

Beam Angle: **61.05**  
Spacing Ratio: **0.95**

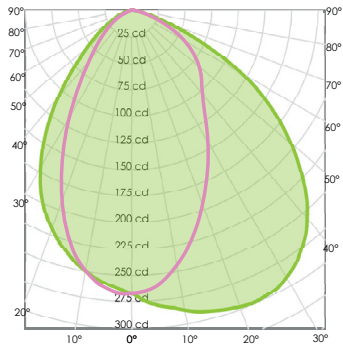
Lumen Multiplier: **07L x 0.40, 10L x 0.56**  
CCT Multiplier: **27K x 0.95, 30K x 0.98, 40K x 1.03**



# PHOTOMETRIC DATA - 3" ROUND WALL WASH

IF03RSx xx PC 835 015 WW WF LW MW

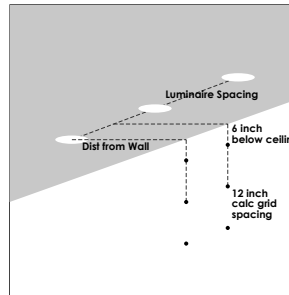
**CANDLEPOWER CURVE**  
TEST SP-00897\_M-015L



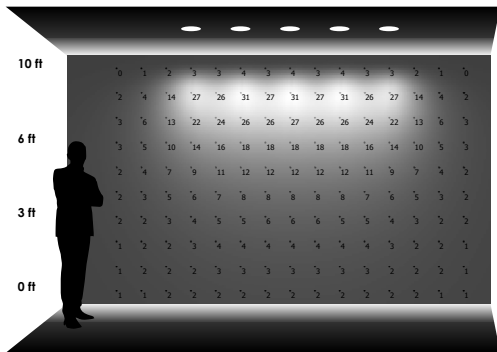
**PERFORMANCE SUMMARY**

Delivered Lumens: 467  
 Luminaire Watts: 10.2  
 LER: 45.78  
 CP at 0deg (Nadir): 268  
 CRI: 80+  
 Lumen Multiplier: 07L x 0.4, 10L x 0.56  
 CCT Multiplier: 27K x 0.95, 30K x 0.98, 40K x 1.03

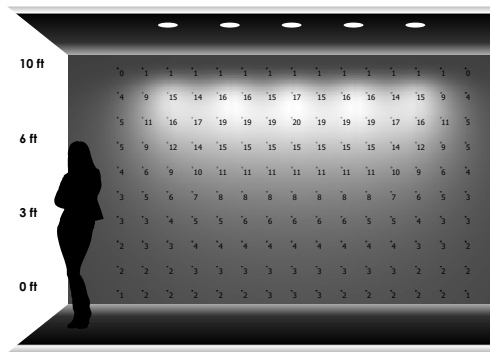
**REFERENCE DIAGRAM**



## PERFORMANCE DATA - INITIAL ILLUMINATION (FOOTCANDLES) ON WALL - DIRECT LIGHT ONLY



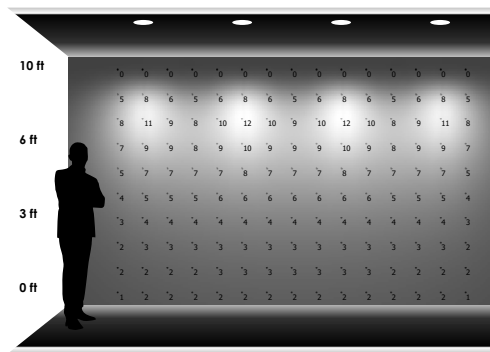
**5 LUMINAIRES**  
2' away from wall  
2' between luminaires



**5 LUMINAIRES**  
2'-6" away from wall  
2'-6" between luminaires



**5 LUMINAIRES**  
3' away from wall  
3' between luminaires



**4 LUMINAIRES**  
3' away from wall  
4' between luminaires

