

3" ROUND DIRECT / INDIRECT PICO SERIES



C0310UDXT - WALL MOUNT

APPLICATION

3" round x 10" high direct / indirect wall luminaire for accent, area and ambient lighting applications.

FEATURES

Spectrum's Cylinder series provides traditional architectural style with high performance and energy efficient illumination. Rugged design with flexible mounting, finish and LED options make these extremely versatile fixtures. Integral LED driver. Quick change LED module with interchangeable optics for job site flexibility and fixture upgrade.

FINISH

Multi-stage polyester powder-coat process applied on our dedicated paint lines. See mounting and color pages for standard finishes. All exposed materials are chromate pretreated to resist corrosion.

ELECTRONICS

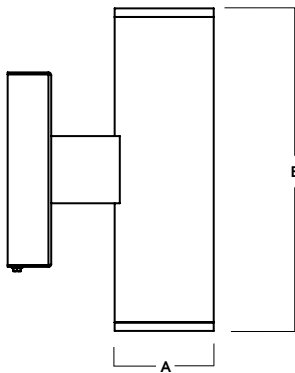
LED system features Xicato LED module with proprietary phosphor technology that provides consistent stable color with CCT control of +/- 100K over life of the light engine. Base CRI is 83 with 2-step MacAdam Ellipse binning. High CRI is 98 with 1 x 2-step MacAdam Ellipse binning. Variety of electronic 120V/277V and dimming drivers. 1 or 2 circuit operation.

CONSTRUCTION

Fabricated seamless aluminum fixture housing. Specular primary optics provide high efficiency illumination. Stainless steel hardware with galvanized brackets to resist corrosion.

CODE COMPLIANCE

BAA compliant. ETL certified to meet US and Canadian standards. Suitable for dry or damp locations. Wet Location Option. Manufactured and tested to UL standards No. 1598/8750.



A	B
3.3 83.8 mm	10.6 269.2 mm

Fixture Weight: 4.5 lbs

LUMENS / WATTAGE DATA

PART NUMBER	SOURCE LUMENS ¹	DELIVERED LUMENS ²	SYSTEM WATTS ³	LPW
C0310UDXT7Lx2	1400	859	12.4	69
C0310UDXT10Lx2	2000	1227	18.2	67

SERIES	UPLIGHT	DOWNLIGHT	CCT	DRIVER / DIMMING ⁵	OPTIONS ⁶	MOUNTING ⁹	FINISH ¹⁰		
C0310UDXT	LUMENS ¹	OPTICS	LUMENS ¹	OPTICS	83 CRI	EX Electronic Driver, 120V/277V DS10X 10%, 0-10V, 120V/277V DS2W1 ELV/MLV, 120V	WL Wet Location Corrosion Resistant CR 2CIR 2 Circuit	WM3 Wall Mount 3" Extension	MW ¹¹ Matte White MB ¹¹ Matte Black PT ¹¹ Platinum Silver CC Custom Color
	7L 700 Lm 10L 1000 Lm	XN ⁴ 12° ND 22° MD 40° WD 44°	7L 700 Lm 10L 1000 Lm	XN ⁴ 12° ND 30° MD 33° WD 38°	27K 2700K 30K 3000K 35K 3500K 40K 4000K				
				98 CRI					
				27HK 2700K 30HK 3000K 35HK 3500K 40HK 4000K		GL ⁷ Clear Glass Lens SO ⁸ Micro Prism Solite™ Lens	EMRM 7W Remote EM EMEN 7W Remote with Enclosure	EMERGENCY BATTERY OPTIONS	See Page 5 for Full Range of Color Options (83-90095)

EXAMPLE: C0310UDXT10LMD10LWD30KEX/SO/WM3/MW

NOTES:

1 Nominal Source Lumens at Any CCT 2 Nominal Delivered Lumens at 83 CRI at Any CCT with MD-GL, MD-SO 3 At 83 CRI 4 XN not Available with 98 CRI Option 5 Contact Factory for Additional Options 6 See Product Options Page for Details 7 Standard Lens for All Indirect and XN, ND 8 Standard Lens for MD, WD 9 See Mounting Page for Details on Components and Finishes 10 See Color Page for More Options/Consult Factory for Special Finishes 11 Standard Finishes



PROJECT: _____
TYPE: _____



Dimensions and values shown are nominal. Spectrum Lighting continually works to improve products and reserves the right to make changes which may alter the performance or appearance of products.

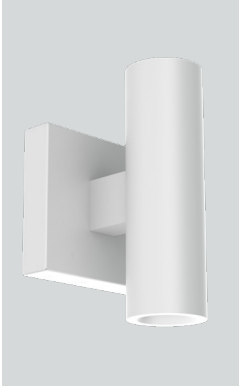
3" ROUND DIRECT / INDIRECT

PICO SERIES / FIXTURE OPTIONS

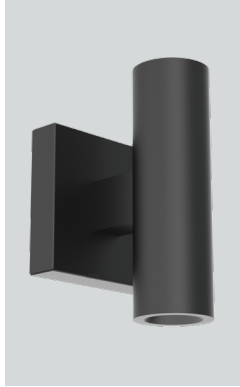


STANDARD FINISHES

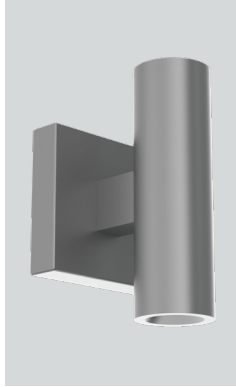
MW
MATTE WHITE



MB
MATTE BLACK

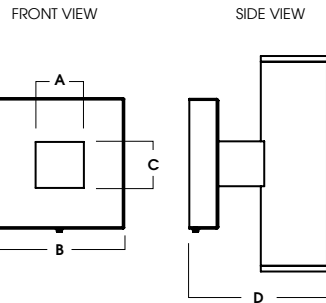
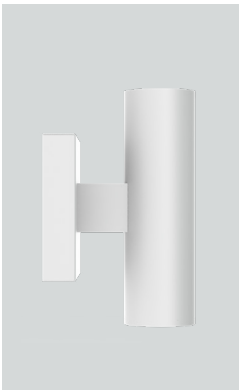


PT
PLATINUM SILVER



WALL MOUNT DETAIL

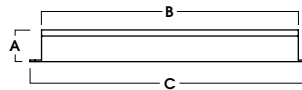
WM3
WALL MOUNT 3" EXTENSION



A	B	C	D
1.4	6.4	2.2	6.3
35.6 mm	162.6 mm	55.9 mm	160.0 mm

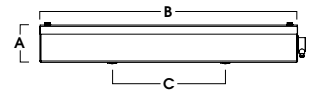
EMERGENCY BATTERY OPTIONS

EMRM* - 7W REMOTE EMERGENCY BATTERY
(50' MAX)



A	B	C
1.3	12.6	13.0

EMEN* - 7W REMOTE EMERGENCY BATTERY
WITH ENCLOSURE (50' MAX)



A	B	C
2.0	17.0	6.2

*OTHER EM BATTERY SIZES AVAILABLE. CONSULT FACTORY

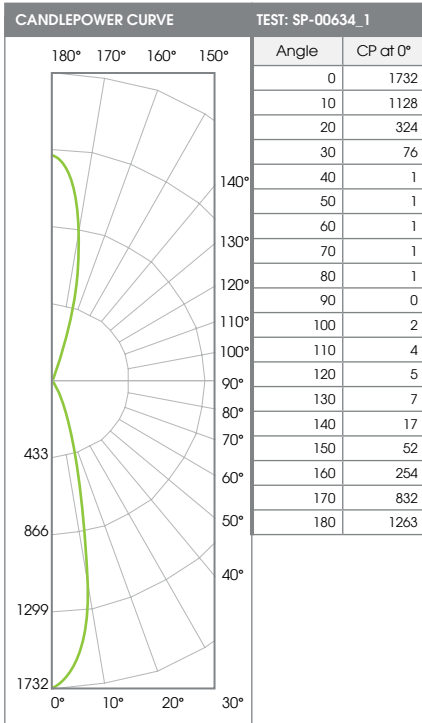
3" ROUND DIRECT / INDIRECT

PICO SERIES / PHOTOMETRIC DATA



C0310UDXT-10LNDGL-10LND-xxKEX-GLxxMW

10Lx2 NARROW - 83 CRI



ZONAL LUMENS		
0-20	308	29%
0-40	413	39%
0-60	414	40%
0-90	417	40%
90-120	9	1%
90-150	38	4%
90-180	315	30%
Total Lumens	1045	100%

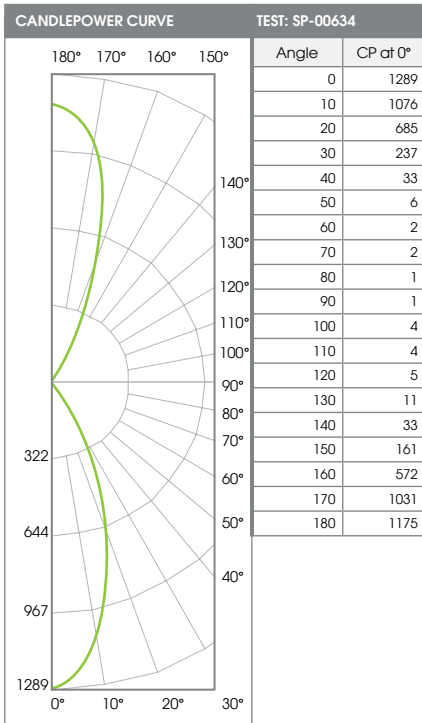
SINGLE UNIT: PERFORMANCE INITIAL FOOTCANDLES AND BEAM ANGLE DIAMETERS			
Mounting Height*	FC at Center	Diameter of Beam**	FC at Beam**
5.5'	57	2.4'	27
6.5'	41	2.8'	20
7.5'	31	3.3'	15
8.5'	24	3.7'	11
10.0'	17	4.3'	8
12.0'	12	5.2'	6
14.0'	9	6.1'	4
16.0'	7	6.9'	3

SINGLE UNIT: PERFORMANCE INITIAL FOOTCANDLES AND BEAM ANGLE DIAMETERS			
Mounting Distance*	FC at Center	Diameter of Beam**	FC at Beam**
4.0'	108	1.4'	52
5.0'	69	1.8'	34
6.0'	48	2.1'	23
8.0'	27	2.8'	13
10.0'	17	3.5'	8
12.0'	12	4.2'	6
14.0'	9	4.9'	4
16.0'	7	5.6'	3

Delivered Lumens: 1045 CP @ 0° (Nadir): 1732 Spacing Ratio: N/A
 Luminaire Watts: 18.2 Direct Beam Angle: 24.5° Output Multipliers: 7L x 0.75
 LER: 57 Indirect Beam Angle: 20.0°
 CRI: 83

C0310UDXT-10LMDGL-10LMD-xxKEX-SOxxMW

10Lx2 MEDIUM - 83 CRI



ZONAL LUMENS		
0-20	364	30%
0-40	654	53%
0-60	669	55%
0-90	675	55%
90-120	12	1%
90-150	78	6%
90-180	553	45%
Total Lumens	1227	100%

SINGLE UNIT: PERFORMANCE INITIAL FOOTCANDLES AND BEAM ANGLE DIAMETERS			
Mounting Height*	FC at Center	Diameter of Beam**	FC at Beam**
5.5'	43	4.2'	19
6.5'	31	5.0'	13
7.5'	23	5.7'	10
8.5'	18	6.5'	8
10.0'	13	7.6'	6
12.0'	9	9.1'	4
14.0'	7	10.7'	3
16.0'	5	12.2'	2

SINGLE UNIT: PERFORMANCE INITIAL FOOTCANDLES AND BEAM ANGLE DIAMETERS			
Mounting Distance*	FC at Center	Diameter of Beam**	FC at Beam**
4.0'	81	2.9'	36
5.0'	52	3.6'	23
6.0'	36	4.3'	16
8.0'	20	5.8'	9
10.0'	13	7.2'	6
12.0'	9	8.7'	4
14.0'	7	10.1'	3
16.0'	5	11.6'	2

Delivered Lumens: 1227 CP @ 0° (Nadir): 1289 Spacing Ratio: N/A
 Luminaire Watts: 18.2 Direct Beam Angle: 41.7° Output Multipliers: 7L x 0.75
 LER: 67 Indirect Beam Angle: 39.8°
 CRI: 83

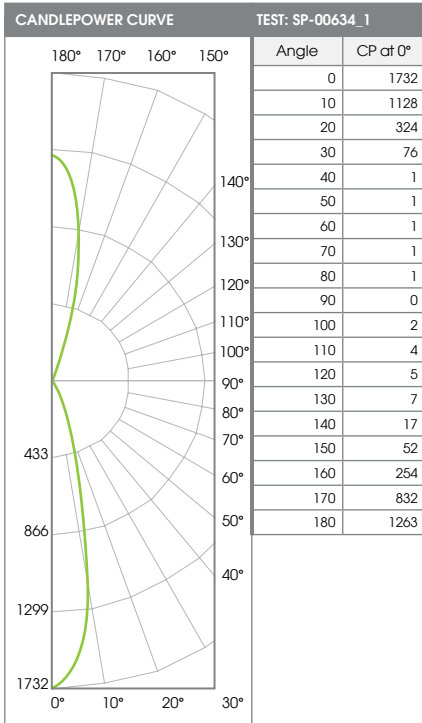
3" ROUND DIRECT / INDIRECT

PICO SERIES / PHOTOMETRIC DATA



C0310UDXT-10LWDGL-10LWD-xxKEX-SOxxMW

10Lx2 WIDE - 83 CRI



Angle Range	Lumens	%
0-20	308	29%
0-40	413	39%
0-60	414	40%
0-90	417	40%
90-120	9	1%
90-150	38	4%
90-180	315	30%
Total Lumens	1045	100%

Mounting Height*	FC at Center	Diameter of Beam**	FC at Beam**
5.5'	57	2.4'	27
6.5'	41	2.8'	20
7.5'	31	3.3'	15
8.5'	24	3.7'	11
10.0'	17	4.3'	8
12.0'	12	5.2'	6
14.0'	9	6.1'	4
16.0'	7	6.9'	3

* From aperture to horizontal surface below.
** At IESNA defined Beam Angle, to 50% Max. CP.

Mounting Distance*	FC at Center	Diameter of Beam**	FC at Beam**
4.0'	108	1.4'	52
5.0'	69	1.8'	34
6.0'	48	2.1'	23
8.0'	27	2.8'	13
10.0'	17	3.5'	8
12.0'	12	4.2'	6
14.0'	9	4.9'	4
16.0'	7	5.6'	3

* From top of fixture to horizontal surface above.
** At IESNA defined Beam Angle, to 50% Max. CP.

Delivered Lumens: 1045 CP @ 0° (Nadir): 1732 Spacing Ratio: N/A
 Luminaire Watts: 18.2 Direct Beam Angle: 24.5° Output Multipliers: 7L x 0.75
 LER: 57 Indirect Beam Angle: 20.0°
 CRI: 83

COLOR OPTIONS - POWDER COAT PAINT FINISHES

NOTE: NO PRINTED IMAGE CAN EQUAL THE EXACT COLOR OF FINISH ON METAL.
SEE INDIVIDUAL SPECIFICATION SHEETS OR CONSULT FACTORY FOR ADDITIONAL INFORMATION.



STANDARD CORD / STEM / CANOPY FINISHES

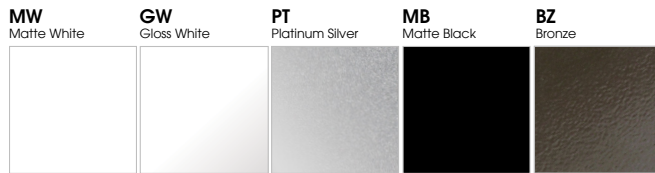
FIXTURE COLOR	STANDARD CORD COLOR	STANDARD CANOPY / STEM COLOR
Matte White, Textured White	Matte White	Matte White
Gloss White	Matte White	Gloss White
Matte Black, Textured Black	Matte Black	Matte Black
All Others	Matte Black	Same Color as Fixture
Custom Color	Contact Factory	Contact Factory

PAINT TIMES

TIER	COST	AVERAGE PAINT TIME*
Tier 1 - Standard Finishes	\$	⌚
Tier 2 - Typical Finishes	\$\$	⌚⌚
Custom Color	Contact Factory	Contact Factory

*CONTACT FACTORY FOR SPECIFIC PRODUCT LEAD TIMES

TIER 1 - STANDARD FINISHES



TIER 2 - TYPICAL FINISHES



CUSTOM COLOR FINISHES

CONTACT FACTORY

CC
Custom Color



*UNAVAILABLE FOR WET LOCATION