



3" ROUND DECORATIVE GLASS 3000 LUMENS MAX

UNIVERSAL HOUSINGS WITH INTERCHANGEABLE TRIMS

Spectrum's A Spec 3" recessed round decorative downlight series features a shallow plenum housing and variety of trims for accent and general illumination.

LUMENS AND WATTAGE CHART					
PART NUMBER	LUMENS	SOURCE LUMENS ¹	DELIVERED LUMENS ²	SYSTEM WATTS	LPW
RD3F	XT10L	1000	204	11.1	18
RD3F	XT13L	1300	275	15.0	18
RD3F	XT20L	2000	424	23.7	18
RD3F	XT30L	3000	636	34.6	18

PROJECT: _____
TYPE: _____



Bubble Glass

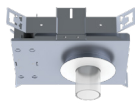


Frosted Glass

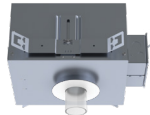


AVAILABLE HOUSING TYPES

SR3MO - New Construction / 30L Max



SR3MI - IC New Construction / 20L Max



SR3MR - Remodel Construction / 30L Max



FIXTURE HOUSING SPECIFICATION

SERIES	LUMENS ¹	DRIVER / DIMMING / VOLTAGE	OPTIONS
SR3MO New Construction SR3MI IC New Construction SR3MR Remodel Construction	XT10L 1000 Lm XT13L 1300 Lm XT20L 2000 Lm XT30L 3000 Lm	E Electronic Driver DS10 10%, 0-10V DS2W1 ELV/MLV, 120V BLU Bluetooth LE	H12 12" - 24" Expandable Bars H06 6" - 12" Expandable Bars BH27 27" Solid Bars CB24 24" C-Channel Bars CH24 24" Chicago Bars FS Fusing EM Integral Emergency Battery EMRM Remote Emergency Battery Pack EB Black Housing PR2 2" Thick Ceiling Adaptor
		1 120V 2 277V	

- Decorative formed round glass tubes in bubble or frosted finish.
- Die-cast aluminum trim with a wide variety of options.
- Shallow plenum housing.
- Universal housing accepts all trim types, including N-Line trimless.
- Performance Xicato LED module for superior reliability and color consistency.
- Large selection of dimming and control options.
- Interchangeable optics and lenses.
- See SR3D for 1" deep regress trim and SR3S for super shallow plenum.
- 5 year warranty on fixture and electronics.
- 10 year warranty on LED CCT.
- Bluetooth LE option.
- Sustainable fixture.
- Zhaga International Standard LED Module for future upgrades.
- 83CRI 2SDCM, 98CRI 1x2SDCM best in industry.

AVAILABLE TRIM / MODULE TYPES



TRIM / MODULE SPECIFICATION

TRIM	CCT	OPTICS	TRIM FINISH ⁹	OPTIONS
RH3BGC2 Bubble Glass Tube Accent RH3FGC2 Frosted Glass Tube Accent	83 CRI 27K 2700K 30K 3000K 35K 3500K 40K 4000K 98 CRI ARTIST ⁴ 27HK 2700K 30HK 3000K 35HK 3500K 40HK 4000K	MD 45°	MW ⁹ Matte White MB Matte Black PT Platinum Silver BZ Bronze CH Charcoal OB Oil Rubbed Bronze AS Sapphire AM Malachite SN Sun Gold CO Copper Metallic GH Graphite CC ¹⁰ Custom Color	NL No Lens

EXAMPLE: SR3MOXT10LDS2W1/H12/RH3BGC227KMDMWNL

NOTES:

1 Nominal Source Lumens at Any CCT 2 Nominal Delivered Lumens 83 CRI at Any CCT with MD-MW-RH3FGC2 3 20L Max 4 For 20L, HK and 30L Options Install Fixtures in Accordance with the Following Marked Spacing: (c) Center To Center of Adjacent Luminaires: 600mm (24in); (b) Top of Luminaire to overhead Building Member: 39mm (1.5in); (c) Luminaire Center to side Building Member: 300mm (12in) 5 Not Available with HK 6 Not Available in IC 7 Contact Factory 8 Inside Trim And Flange Will Match Color Specified 9 Standard Finish 10 Contact Factory for Special Finishes



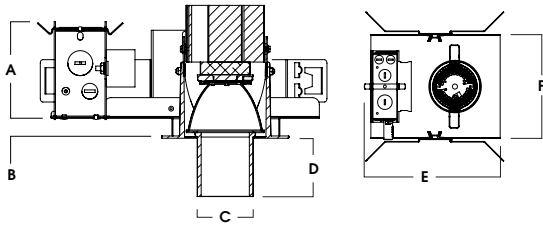
Dimensions and values shown are nominal. Spectrum Lighting continually works to improve products and reserves the right to make changes which may alter the performance or appearance of products.



HOUSING DIMENSIONS

SR3MO - NEW CONSTRUCTION / 30L MAX

Non-IC rated, thermally protected frame-in kit for new construction. Non-IC designation requires insulation must be minimum of 3" from housing.



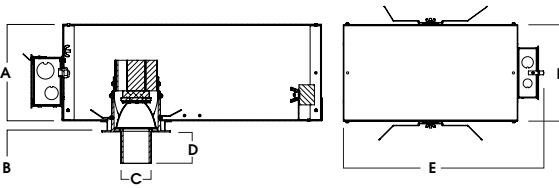
LED	A	B	C	D	E	F
XT10L	3.43	.625	2.0	2.1	9.57	7.65
XT13L	3.77	.625	2.0	2.1	9.57	7.65
XT20L	4.27	.625	2.0	2.1	9.57	7.65
XT30L	4.27	.625	2.0	2.1	9.57	7.65

Fixture Weight: 4.0 lbs

Ceiling Cutout: Ø 4"

SR3MI - IC NEW CONSTRUCTION / 20L MAX

IC rated frame-in kit for new construction with direct insulation contact and CCEA (Chicago Plenum) compatibility.



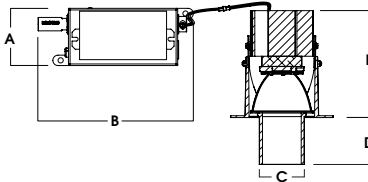
A	B	C	D	E	F
6.36	.625	2.0	2.1	10L-13L: 13.2	9.5
161.5 mm	15.9 mm	50.8 mm	53.3 mm	20L: 19.2	241.3 mm

Fixture Weight: 5.0 lbs

Ceiling Cutout: Ø 4"

SR3MR - REMODEL CONSTRUCTION / 30L MAX

Non-IC rated frame-in kit for existing construction. Non-IC designation requires insulation must be minimum of 3" from housing.



A	B	C	D	E
2.8	7.5	2.0	2.1	4.9
71.1 mm	190.5 mm	50.8 mm	53.3 mm	124.5 mm

Fixture Weight: 2.0 lbs

Ceiling Cutout: Ø 3 3/4"

FEATURES

FRAME-IN KIT

Precision Die-formed 20 gauge galvanized steel housing and integral junction box with (3) 5/8", (3) 7/8" and (2) 1 1/8" knockouts. Junction box capacity: 8 12AWG rated for 90 °C. Tool-less driver and junction box access for ease of maintenance. Post-loc trim retention springs for 5/8"-1" ceiling thickness. Use PR2 for up to 2" thick ceiling. For thicker ceilings consult factory.

MOUNTING

A variety of mounting bars are available (excluding remodel). Ceiling materials must be rigid to support luminaire frame.

DRIVER

Several constant current dimming drivers are available. Power factor >.9 typical, 50/60Hz, 350-1050mA.

TRIM

Self-flanged, one-piece, die-cast aluminum finished in a variety of powdercoat options. Decorative glass is finished in blown glass or frosted pattern.

REMODEL

Features tethered power supply and junction box with sheathed wire.

LUMEN OUTPUT

Optics and kelvins maintain 1000-3000 lumens range.

LED

Zhaga compatible high performance Xicato module. Proprietary phosphor technology provides consistent and stable color with CCT control of +/- 100K over life of light engine.

EMERGENCY

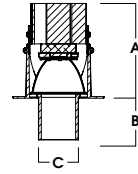
Integral or remote 7W emergency battery options are available. Operates for 90 minutes and produces nominal 450 lumens.

BLUETOOTH

Integral Bluetooth LE option is available for dimming to .1%, grouping, remote access, electrical feedback and beacon technology.

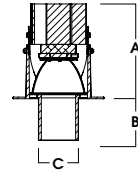
TRIM / MODULE DATA

RH3BGC2 - BUBBLE GLASS TUBE ACCENT MODULE



Lm	A	B	C
XT10L	4.9	2.1	2.0
XT13L	4.9	2.1	2.0
XT20L	4.9	2.1	2.0

RH3FGC2 - FROSTE GLASS TUBE ACCENT MODULE



Lm	A	B	C
XT10L	4.9	2.1	2.0
XT13L	4.9	2.1	2.0
XT20L	4.9	2.1	2.0

FUSING

Integral optional fast blow fuse with fuse holder.

COLOR VARIATION

Standard CRI (83) within 2-step MacAdam Ellipse. High CRI (98) within 1x2-step MacAdam Ellipse.

LISTINGS

ETL Certified to meet US and Canadian Standards. Manufactured and tested to UL standard No. 1598/8750. BAA compliant. City of Chicago Environmental Air (CCEA), and Insulated Ceiling (IC) options available.

WARRANTY

Fixtures, LEDs and drivers carry 5 year Spectrum warranty, as well as individual OEM warranty. Warranty is 5 years from date of manufacturing. LED system rated for operation in an ambient temperatures up to 25 °C.



PHOTOMETRIC DATA - 3" ROUND DECORATIVE

SR3Mx-XT30L-E1-RH3FGC2-35K-MD-MW

CANDLEPOWER CURVE	INTENSITY	ZONAL LUMENS		SINGLE UNIT: PERFORMANCE INITIAL FOOTCANDLES BASED ON IES BEAM ANGLE				MULTIPLE UNITS: PERFORMANCE 80/50/20% REFLECTANCES INITIAL FOOTCANDLES AND WATTS PER SQUARE FOOT							
		0° - 10°	10° - 20°	Mounting Height AFF	FC at Center on Floor	Beam Diameter	FC at Beam Edge	Ceiling Height	Fixture Spacing	RCR 3		RCR 5			
	0.00°	141	22%	5.50'	60 fc	2.3'	30 fc	8'	3'	64	4.08	86	6.36		
	0.00°	1,802	0° - 10°	141	22%	6.50'	43 fc	2.7'	21 fc	12'	5'	22	1.39	19	1.38
	5.00°	1,636	0° - 20°	283	45%	7.50'	32 fc	3.1'	16 fc	16'	7'	13	0.85	8	0.59
	10.00°	1,164	0° - 30°	352	56%	8.50'	25 fc	3.5'	12 fc	Delivered Illuminance Rating: (DIR)					
	15.00°	476	0° - 40°	406	64%	10.00'	18 fc	4.1'	9 fc	2' Suspension Length					
	20.00°	228	0° - 60°	502	79%	12.00'	13 fc	5.0'	6 fc	Square rooms used for multiple units:					
	30.00°	109	0° - 80°	596	94%	14.00'	9 fc	5.8'	5 fc	- RCR 3: Length & Width = Ceiling Ht. - 4.5' x 3.33					
	40.00°	66	0° - 90°	631	100%	16.00'	7 fc	6.6'	4 fc	- RCR 5: Length & Width = Ceiling Ht. - 4.5' x 2.00					
	50.00°	53	Total	633	100%					+ Average Footcandles at 2.5' Above Floor					
	60.00°	48									* Exceeds spacing criteria by 114%				
	70.00°	42									** Exceeds spacing criteria by 67%				
80.00°	36									*** Exceeds spacing criteria by 52%					
90.00°	0														

Delivered Lumens: 633
Luminaire Watts: 34.6
LER: 18.29

CP at 0deg (Nadir): 1,802
CRI: 83

Beam Angle: 23.29
Spacing Ratio: 0.4

Lamp Multiplier: 10L x 0.32, 13L x 0.43, 20L x 0.67
CCT Multiplier: LEDXT lumen output is the same for all available CCT's

