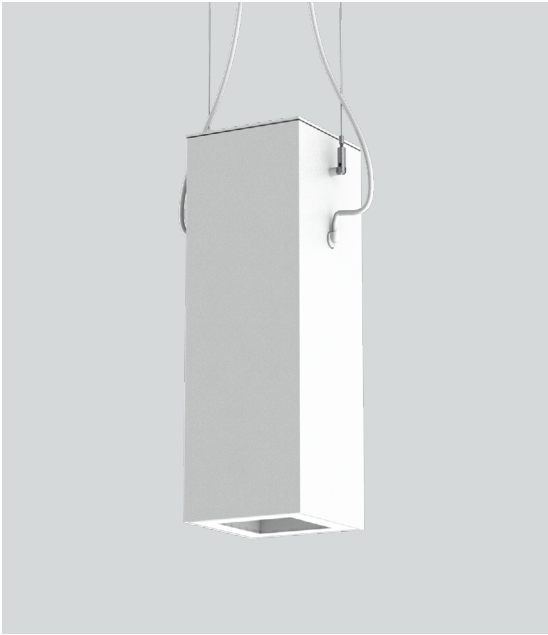


# 6" SQUARE DIRECT / INDIRECT FOCUSED ILLUMINATION



## CO618SQUDXT, CO624SQUDXT 2 CABLE MOUNT WITH CORD

### APPLICATION

6" square x 18" or 24" high cylinder luminaire for direct / indirect illumination.

### FEATURES

Spectrum's Cylinder series provides traditional architectural style with high performance and energy efficient illumination. Rugged design with flexible mounting, finish and LED options make these extremely versatile fixtures. Interchangeable optics for job site flexibility and fixture upgrade.

### FINISH

Multi-stage polyester powder-coat process applied on our dedicated paint lines. See mounting and color pages for standard finishes. All exposed materials are chromate pre-treated to resist corrosion.

### ELECTRONICS

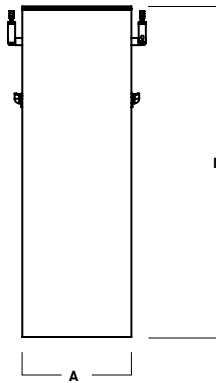
LED system features Xicato LED module with proprietary phosphor technology that provides consistent stable color with CCT control of +/- 100K over life of the light engine. Base CRI is 83 with 2-step MacAdam Ellipse binning. High CRI is 98 with 1 x 2-step MacAdam Ellipse binning. Variety of electronic 120V/277V and dimming drivers.

### CONSTRUCTION

Fabricated seamless aluminum fixture housing, specular primary reflector provides high efficiency illumination. Stainless steel hardware with galvanized brackets to resist corrosion. Machined aluminum trims finished to specification.

### CODE COMPLIANCE

BAA compliant. ETL certified to meet US and Canadian standards. Suitable for dry or damp locations. Manufactured and tested to UL standards No. 1598/8750.



SERIES	A	B
CO618SQUDXT	6.0	18.2
CO624SQUDXT	6.0	24.2

LUMENS / WATTAGE DATA				
PART NUMBER	SOURCE LUMENS <sup>1</sup>	DELIVERED LUMENS <sup>2</sup>	SYSTEM WATTS	LPW
CO618SQUDXT10L	2000	1374	18.2	75
CO618SQUDXT13L	2600	1852	26.0	71
CO618SQUDXT20L	4000	2849	43.4	66

SERIES	LUMENS <sup>1/3</sup>	CCT	OPTICS		DRIVER / DIMMING <sup>5</sup>		TRIM	MOUNTING <sup>9</sup>	FINISH <sup>11</sup>	
CO618SQUDXT 6" x 18" Cylinder	10L 1000 Lm	83 CRI	UPLIGHT <sup>4</sup>	DOWNLIGHT	EX Electronic Driver, 120V/277V	DS10X 10%, 0-10V, 120V/277V	DOWNLIGHT	CD2x6S <sup>10</sup>	2 Cable Mount with Cord	MW <sup>6</sup> Matte White MB <sup>6</sup> Matte Black PT <sup>6</sup> Platinum Silver CC Custom Color
	13L 1300 Lm	27K 2700K	ND 20°	ND 21°						
CO624SQUDXT 6" x 24" Cylinder	20L 2000 Lm	30K 3000K	MD 38°	MD 39°	DO10X 1%, 0-10V, 120V/277V	DS2W1 ELV/MLV, 120V	TCT TPT Platinum Silver TCC Custom Color	EMERGENCY BATTERY OPTIONS	EMRM 7W Remote EM EMEN 7W Remote with Enclosure	
		35K 3500K	WD 45°	WD 44°						
		40K 4000K	XW 58°	XW 56°						
		98 CRI								
		27HK 2700K					NL No Lens			
		30HK 3000K					GL <sup>7</sup> Clear Glass Lens			
		35HK 3500K					SO <sup>8</sup> Micro Prism Solite™ Lens			
		40HK 4000K								

**EXAMPLE:** CO618SQUDXT20L35KMDWDEX/TCYSO/CD2x6S36/MW

NOTES:  
<sup>1</sup> Nominal Source Lumens at Any CCT <sup>2</sup> Nominal Delivered Lumens at 83 CRI at Any CCT with MD-GL, MD-TCY-SO-MW <sup>3</sup> Uplight & Downlight Use The Same Lumen Output <sup>4</sup> ¼" Clear Glass Only <sup>5</sup> Contact Factory for Additional Options <sup>6</sup> Standard Finishes <sup>7</sup> Standard Lens for ND <sup>8</sup> Standard Lens for MD, WD, XW <sup>9</sup> See Mounting Page for Details on Components and Finishes <sup>10</sup> Specify Length in Inches: See Mounting Page for Available Lengths <sup>11</sup> Reference Color Sheet Located on Product Webpage for Full List of Available Colors



PROJECT: \_\_\_\_\_  
 TYPE: \_\_\_\_\_



Dimensions and values shown are nominal. Spectrum Lighting continually works to improve products and reserves the right to make changes which may alter the performance or appearance of products.

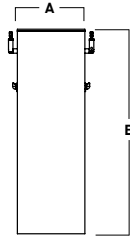
# 6" SQUARE DIRECT / INDIRECT

## FOCUSED ILLUMINATION / FIXTURE OPTIONS



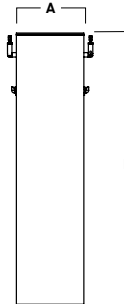
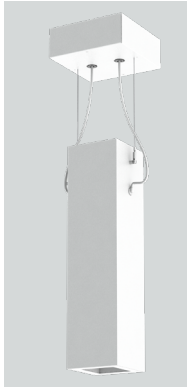
### SERIES SIZES

**C0618UDXT**



A	B
6.0	18.2
152.4 mm	462.3 mm

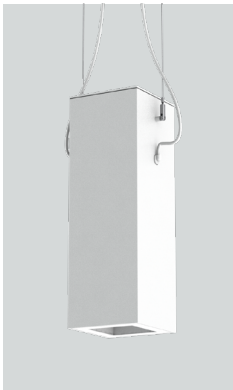
**C0624UDXT**



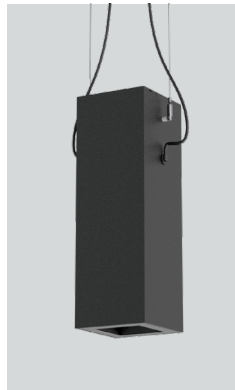
A	B
6.0	24.2
152.4 mm	614.7 mm

### STANDARD FINISHES

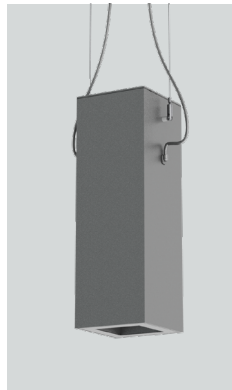
**MW**  
MATTE WHITE



**MB**  
MATTE BLACK

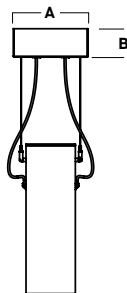
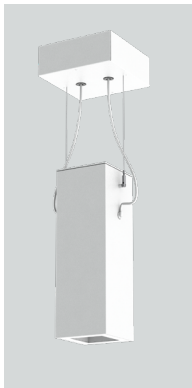


**PT**  
PLATINUM SILVER



### MOUNTING TYPES

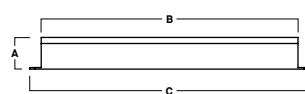
**CD2x6S**  
2 CABLE MOUNT WITH CORD



A	B
9.1	3.5
231.1 mm	88.9 mm

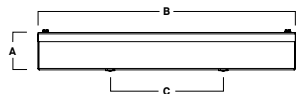
### REMOTE EMERGENCY BATTERY OPTIONS

**EMRM\*** - 7W REMOTE EMERGENCY BATTERY  
(50' MAX)



A	B	C
1.3	12.6	13.0

**EMEN\*** - 7W REMOTE EMERGENCY BATTERY  
WITH ENCLOSURE (50' MAX)



A	B	C
2.0	17.0	6.2

\*OTHER EM BATTERY SIZES AVAILABLE, CONSULT FACTORY

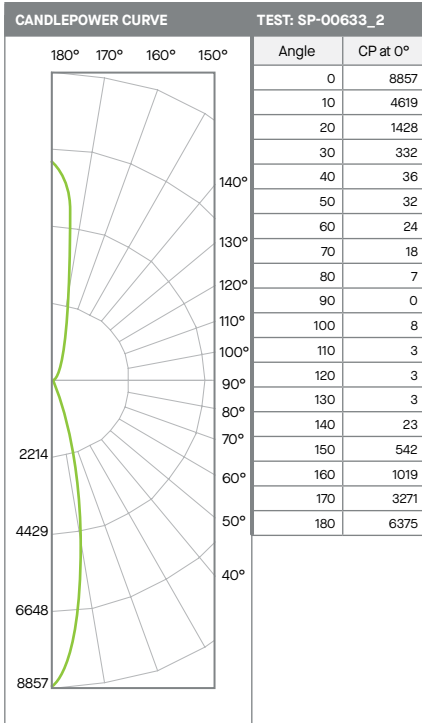
# 6" SQUARE DIRECT / INDIRECT

## FOCUSED ILLUMINATION / PHOTOMETRIC DATA



C06xxSQUDXT-20LNDGL-20LND-xxKEX-TCY-GLMW

20Lx2 NARROW - 83 CRI



Beam Angle	Lumens	%
0-20	1346	40%
0-40	1900	56%
0-60	1954	58%
0-90	1996	59%
90-120	16	0%
90-150	140	4%
90-180	1391	41%
<b>Total Lumens</b>	<b>3386</b>	<b>100%</b>

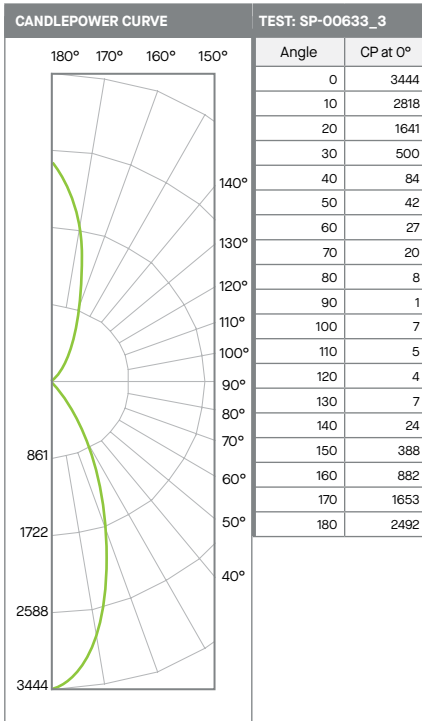
Mounting Height*	FC at Center	Diameter of Beam**	FC at Beam**
5.5'	293	2.0'	142
6.5'	210	2.4'	101
7.5'	157	2.8'	76
8.5'	123	3.2'	59
10.0'	89	3.7'	43
12.0'	62	4.4'	30
14.0'	45	5.2'	22
16.0'	35	5.9'	17

Mounting Distance*	FC at Center	Diameter of Beam**	FC at Beam**
4.0'	554	1.4'	268
5.0'	354	1.8'	172
6.0'	246	2.1'	119
8.0'	138	2.8'	67
10.0'	89	3.5'	43
12.0'	62	4.2'	30
14.0'	45	4.9'	22
16.0'	35	5.6'	17

Delivered Lumens: 3386      CP @ 0° (Nadir): 8857      Spacing Ratio: N/A  
 Luminaire Watts: 43.4      Direct Beam Angle: 21°      Output Multipliers: 10L x 0.48, 13L x 0.65  
 LER: 78      Indirect Beam Angle: 20°  
 CRI: 83

C06xxSQUDXT-20LMDGL-20LMD-xxKEX-TCY-SOMW

20Lx2 MEDIUM - 83 CRI



Beam Angle	Lumens	%
0-20	916	32%
0-40	1615	57%
0-60	1695	59%
0-90	1740	61%
90-120	16	1%
90-150	143	5%
90-180	1108	39%
<b>Total Lumens</b>	<b>2849</b>	<b>100%</b>

Mounting Height*	FC at Center	Diameter of Beam**	FC at Beam**
5.5'	114	3.9'	51
6.5'	82	4.6'	36
7.5'	61	5.3'	27
8.5'	48	6.0'	21
10.0'	34	7.0'	15
12.0'	24	8.4'	11
14.0'	18	9.8'	8
16.0'	13	11.2'	6

Mounting Distance*	FC at Center	Diameter of Beam**	FC at Beam**
4.0'	215	2.1'	100
5.0'	138	2.7'	64
6.0'	96	3.2'	45
8.0'	54	4.3'	25
10.0'	34	5.4'	16
12.0'	24	6.4'	11
14.0'	18	7.5'	8
16.0'	13	8.6'	6

Delivered Lumens: 2849      CP @ 0° (Nadir): 3444      Spacing Ratio: N/A  
 Luminaire Watts: 43.4      Direct Beam Angle: 38.6°      Output Multipliers: 10L x 0.48, 13L x 0.65  
 LER: 66      Indirect Beam Angle: 30°  
 CRI: 83

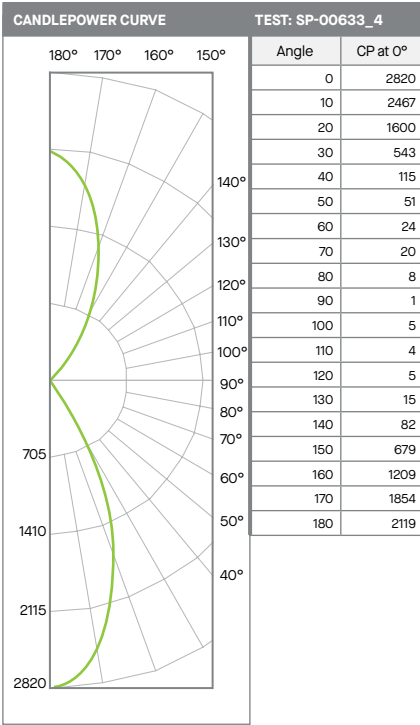
# 6" SQUARE DIRECT / INDIRECT

## FOCUSED ILLUMINATION / PHOTOMETRIC DATA



CO6xxSQUDXT-20LWDGL-20LWD-xxKEX-TCY-SOMW

20Lx2 WIDE - 83 CRI



ZONAL LUMENS		
0-20	822	28%
0-40	1562	53%
0-60	1659	56%
0-90	1703	58%
90-120	15	1%
90-150	223	8%
90-180	1256	42%
<b>Total Lumens</b>	<b>2959</b>	<b>100%</b>

SINGLE UNIT: PERFORMANCE INITIAL FOOTCANDLES AND BEAM ANGLE DIAMETERS			
Mounting Height*	FC at Center	Diameter of Beam**	FC at Beam**
5.5'	93	4.4'	40
6.5'	67	5.2'	29
7.5'	50	6.0'	22
8.5'	39	6.8'	17
10.0'	28	8.0'	12
12.0'	20	9.6'	8
14.0'	14	11.3'	6
16.0'	11	12.9'	5

SINGLE UNIT: PERFORMANCE INITIAL FOOTCANDLES AND BEAM ANGLE DIAMETERS			
Mounting Distance*	FC at Center	Diameter of Beam**	FC at Beam**
4.0'	176	2.9'	78
5.0'	113	3.6'	50
6.0'	78	4.4'	35
8.0'	44	5.8'	19
10.0'	28	7.3'	12
12.0'	20	8.7'	9
14.0'	14	10.2'	6
16.0'	11	11.6'	5

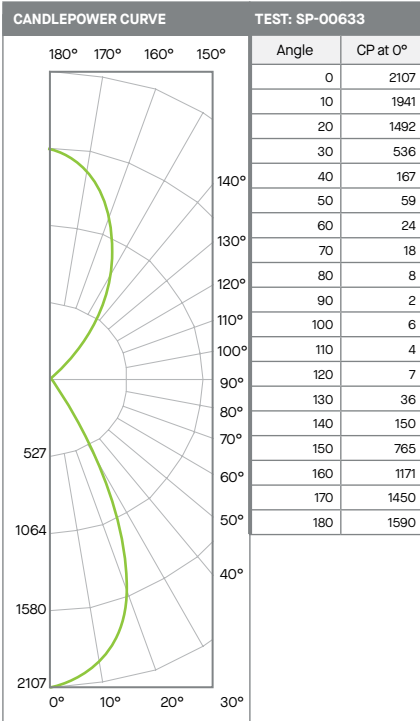
Delivered Lumens: 2959  
Luminaire Watts: 43.4  
LER: 68

CP @ 0° (Nadir): 2820  
Direct Beam Angle: 43.8°  
Indirect Beam Angle: 40.0°  
CRI: 83

Spacing Ratio: N/A  
Output Multipliers: 10L x 0.48, 13L x 0.65

CO6xxSQUDXT-20LXWGL-20LXW-xxKEX-TCY-SOMW

20Lx2 XTRA WIDE - 83 CRI



ZONAL LUMENS		
0-20	674	24%
0-40	1413	50%
0-60	1534	54%
0-90	1576	56%
90-120	15	1%
90-150	294	10%
90-180	1261	44%
<b>Total Lumens</b>	<b>2837</b>	<b>100%</b>

SINGLE UNIT: PERFORMANCE INITIAL FOOTCANDLES AND BEAM ANGLE DIAMETERS			
Mounting Height*	FC at Center	Diameter of Beam**	FC at Beam**
5.5'	70	5.2'	29
6.5'	50	6.1'	20
7.5'	37	7.1'	15
8.5'	29	8.0'	12
10.0'	21	9.4'	9
12.0'	15	11.3'	6
14.0'	11	13.2'	4
16.0'	8	15.1'	3

SINGLE UNIT: PERFORMANCE INITIAL FOOTCANDLES AND BEAM ANGLE DIAMETERS			
Mounting Distance*	FC at Center	Diameter of Beam**	FC at Beam**
4.0'	132	3.7'	54
5.0'	84	4.7'	35
6.0'	59	5.6'	24
8.0'	33	7.5'	14
10.0'	21	9.3'	9
12.0'	15	11.2'	6
14.0'	11	13.1'	4
16.0'	8	14.9'	3

Delivered Lumens: 2837  
Luminaire Watts: 43.4  
LER: 65

CP @ 0° (Nadir): 2107  
Direct Beam Angle: 50.4°  
Indirect Beam Angle: 50.0°  
CRI: 83

Spacing Ratio: N/A  
Output Multipliers: 10L x 0.48, 13L x 0.65