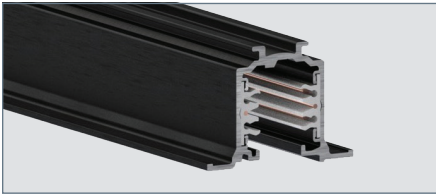




OT/HOT ARCHITECTURAL TRACK & ACCESSORIES

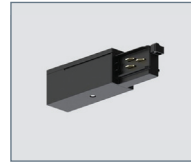
RECESSED - 120V or 277V - 2 CIRCUIT / 2 NEUTRAL 0-10V CONTROL



OT/HOT TRACK

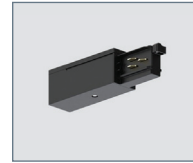
Flush to ceiling One Track recessed track system for drywall installation. 0-10V or DALI controllability. Specify 120V or 277V systems.

- OTR2W4** - 4' Track, 120V, White
- OTR2W4** - 4' Track, 277V, White
- OTR2W8** - 8' Track, 120V, White
- HOTR2W8** - 8' Track, 277V, White
- OTR2B4** - 4' Track, 120V, Black
- HOTR2B4** - 4' Track, 277V, Black
- OTR2B8** - 8' Track, 120V, Black
- HOTR2B8** - 8' Track, 277V, Black



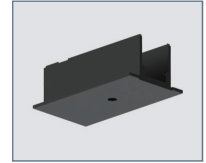
END-FEED*

- Polarity Right / Ground Left
- OTO1W2** - 120V, White
 - HOT01W2** - 277V, White
 - OTO1B2** - 120V, Black
 - HOT01B2** - 277V, Black



END-FEED*

- Polarity Left / Ground Right
- OTO2W2** - 120V, White
 - HOT02W2** - 277V, White
 - OTO2B2** - 120V, Black
 - HOT02B2** - 277V, Black



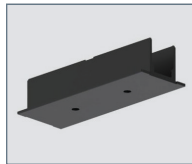
RECESSED COVER FOR END-FEED

- OTC01W** - 120V/277V, White
- OTC01B** - 120V/277V, Black



MIDDLE FEED*

- Polarity Ridge
- OT10W2** - 120V, White
 - HOT10W2** - 277V, White
 - OT10B2** - 120V, Black
 - HOT10B2** - 277V, Black



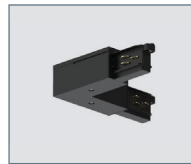
RECESSED COVER FOR MIDDLE FEED

- OTC10W** - 120V/277V, White
- OTC10B** - 120V/277V, Black



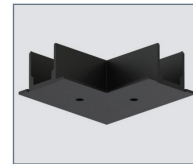
"L" FEED*

- Polarity Interior / Ground Exterior
- OT11W2** - 120V, White
 - HOT11W2** - 277V, White
 - OT11B2** - 120V, Black
 - HOT11B2** - 277V, Black



"L" FEED*

- Polarity Exterior / Ground Interior
- OT12W2** - 120V, White
 - HOT12W2** - 277V, White
 - OT12B2** - 120V, Black
 - HOT12B2** - 277V, Black



RECESSED COVER FOR "L" FEED

- OTC11W** - 120V/277V, White
- OTC11B** - 120V/277V, Black



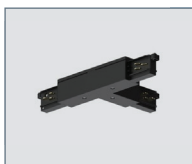
"T" FEED*

- Polarity Exterior Left / Ground Interior Right
- OT13W2** - 120V, White
 - HOT13W2** - 277V, White
 - OT13B2** - 120V, Black
 - HOT13B2** - 277V, Black



"T" FEED*

- Polarity Interior Right / Ground Interior Left
- OT14W2** - 120V, White
 - HOT14W2** - 277V, White
 - OT14B2** - 120V, Black
 - HOT14B2** - 277V, Black



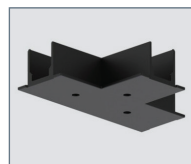
"T" FEED*

- Polarity Interior Left / Ground Exterior Right
- OT15W2** - 120V, White
 - HOT15W2** - 277V, White
 - OT15B2** - 120V, Black
 - HOT15B2** - 277V, Black



"T" FEED*

- Polarity Interior Right / Ground Exterior Left
- OT16W2** - 120V, White
 - HOT16W2** - 277V, White
 - OT16B2** - 120V, Black
 - HOT16B2** - 277V, Black



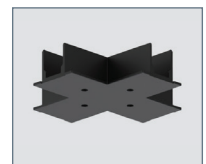
RECESSED COVER FOR "T" FEED

- OTC13W** - 120V/277V, White
- OTC13B** - 120V/277V, Black



"X" FEED*

- Not to be used with trimless track
- OT17W2** - 120V, White
 - HOT17W2** - 277V, White
 - OT17B2** - 120V, Black
 - HOT17B2** - 277V, Black



RECESSED COVER FOR "X" FEED

- OTC17W** - 120V/277V, White
- OTC17B** - 120V/277V, Black

*RECESSED COVER IS REQUIRED AND PURCHASED SEPARATELY



OT/HOT ARCHITECTURAL TRACK & ACCESSORIES
 RECESSED - 120V or 277V - 2 CIRCUIT / 2 NEUTRAL 0-10V CONTROL



JOINTING CONNECTOR

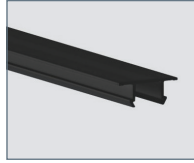
Polarity Ridge

- OT03W** - 120V/277V, White
- OT03B** - 120V/277V, Black



END CAP FOR TRACK WITH LOCKING SCREW

- OT04RW** - 120V, White
- OT04RB** - 120V, Black



ADDITIONAL COVER STRIP FOR TRACK

- OTGPW4** - 4', 120V/277V, White
- OTGPB4** - 4', 120V/277V, Black
- OTGPW8** - 8', 120V/277V, White
- OTGPB8** - 8', 120V/277V, Black



SWAG HOOK

- OTHW** - 120V/277V, White
- OTHB** - 120V/277V, Black



CUTTING TOOL FOR TRACK CONDUCTORS

- OTT** - Cutting Tool For Track Conductors