



# 8" ROUND ACCENT DIRECT

## STAGE-PRO SERIES



### C0812YKXT - YOKE MOUNT

#### APPLICATION

8" round x 12" high XT series pro luminaire with adjustable / lockable yoke for aiming and adjustment.

#### FEATURES

Fixture tilts and locks 180° and rotates and locks 360°. May be surface, wall, or pendant mounted. Two stage optical system for smooth focused light distribution.

#### FINISH

Multi-stage polyester powder-coat process applied on our dedicated paint lines. See mounting and color pages for standard finishes. All exposed materials are chromate pre-treated to resist corrosion.

#### ELECTRONICS

LED system features Xicato LED module with proprietary phosphor technology that provides consistent stable color with CCT control of +/- 100K over life of the light engine. Base CRI is 83 with 2-step MacAdam Ellipse binning. High CRI is 98 with 1 x 2-step MacAdam Ellipse binning. Variety of electronic 120V/277V and dimming drivers.

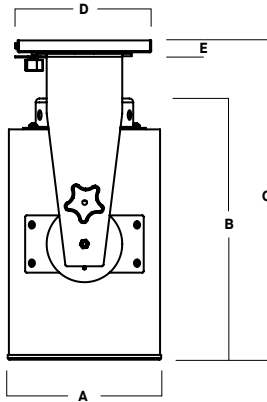
#### CONSTRUCTION

Fabricated seamless aluminum fixture housing. Specular primary optical reflectors provide high efficiency illumination. Impact resistant tempered glass lenses. Stainless steel hardware with galvanized steel brackets to resist corrosion. Trim formed from .063 thick high purity aluminum and finished to specification.

#### CODE COMPLIANCE

BAA compliant. ETL certified to meet US and Canadian standards. Suitable for dry or damp locations. Manufactured and tested to UL standards No. 1598/8750.

0° POSITION



A	B	C	D	E
8.0 203.2 mm	13.5 342.9 mm	16.0 406.4 mm	71 180.3 mm	.62 15.8 mm

Fixture Weight: 22.5 lbs

#### LUMENS / WATTAGE DATA

PART NUMBER	SOURCE LUMENS	DELIVERED LUMENS <sup>2</sup>	SYSTEM WATTS <sup>3</sup>	LPW
C0812YKXT10L	1000	946	9.1	104
C0812YKXT13L	1300	1274	13.0	98
C0812YKXT20L	2000	1960	21.7	90
C0812YKXT30L	3000	2939	32.6	90

SERIES	LUMENS <sup>1</sup>	CCT	OPTICS	DRIVER / DIMMING <sup>5</sup>	OPTIONS <sup>8</sup>	TRIM	MOUNTING <sup>10</sup>	FINISH <sup>11</sup>	
C0812YKXT	10L	1000 Lm	83 CRI	XN <sup>4</sup> 12°	EX Electronic Driver, 120V/277V	FS Fuse Holder and Fuse	TSC <sup>9</sup> Semi Diffuse Low Iridescent Clear	SM Surface Mount	MW <sup>12</sup> Matte White
	13L	1300 Lm	27K 2700K						
	20L	2000 Lm	30K 3000K	MD 39°	DO10X 1%, 0-10V, 120V/277V	SC1 120V Twist Lock Plug	TCC Custom Color	PT <sup>12</sup> Platinum Silver	
	30L	3000 Lm	35K 3500K	WD 46°	DS2W1 ELV / MLV, 120V				P1 277V Twist Lock Plug
			40K 4000K	XW 57°	DLTE <sup>6</sup> Lutron 2-Wire Forward Phase (MLV), 120V	P2 277V Twist Lock Plug	SO Micro Prism Solite™ Lens	EMRM 7W Remote EM	
			98 CRI		DL3EX <sup>6</sup> 1%, Lutron® EcoSystem® Fade, 120V/277V				GL Clear Glass Lens
			27HK 2700K		EDO1X <sup>6</sup> 0.1%, eldoLED 120V/277V	FG Frosted Glass Lens			
			30HK 3000K		DMXS <sup>7</sup> DMX Standard Configuration				
			35HK 3500K		DMXC <sup>7</sup> DMX Non-Standard Custom				
			40HK 4000K						

EXAMPLE: C0812YKXT20L30KNDEX/TSG/SM/MW

#### NOTES:

1 Nominal Source Lumens at Any CCT 2 Nominal Delivered Lumens at 83 CRI at Any CCT with ND-TSG-NL 3 At 83 CRI 4 XN 13L Max at 83 and 98 CRI 5 Contact Factory for Additional Options 6 Requires Longer Yoke 7 Contact Factory 8 See Product Options Page for Details 9 Standard Finish 10 See Mounting Page for Details on Components and Finishes 11 Reference Color Sheet Located on Product Webpage for Full List of Available Colors/Consult Factory for Special Finishes 12 Standard Finishes



PROJECT: \_\_\_\_\_  
TYPE: \_\_\_\_\_



Dimensions and values shown are nominal. Spectrum Lighting continually works to improve products and reserves the right to make changes which may alter the performance or appearance of products.

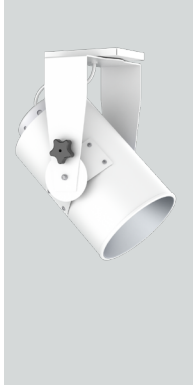
# 8" ROUND ACCENT DIRECT

## STAGE-PRO SERIES / FIXTURE OPTIONS

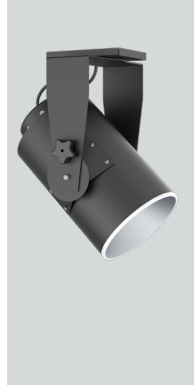


### STANDARD FINISHES

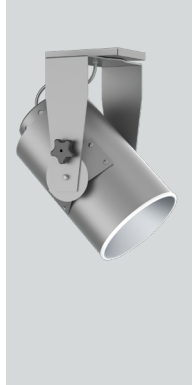
**MW**  
MATTE WHITE



**MB**  
MATTE BLACK

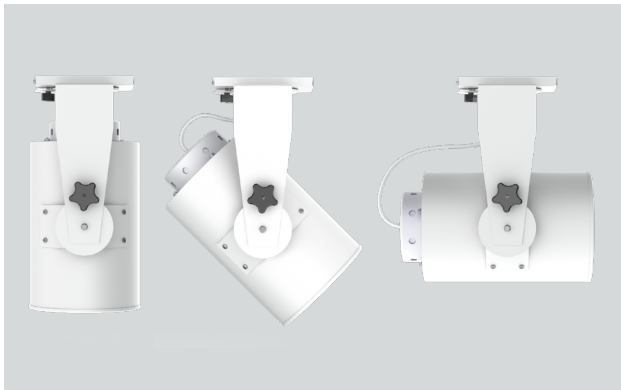


**PT**  
PLATINUM SILVER

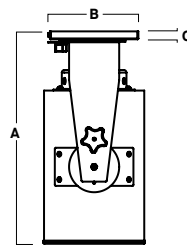


### MOUNTING TYPES

**YK**  
YOKE MOUNT

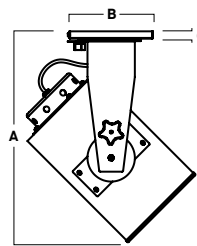


0° POSITION



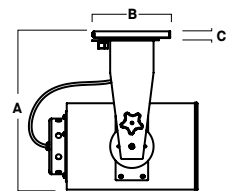
A	B	C
16.0	71	.62
406.4 mm	180.3 mm	15.8 mm

45° POSITION



A	B	C
17.8	71	.62
452.1 mm	180.3 mm	15.8 mm

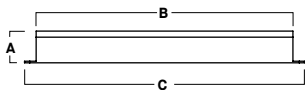
90° TILT



A	B	C
14.7	71	.62
373.4 mm	180.3 mm	15.8 mm

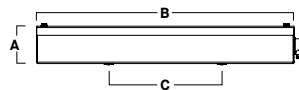
### EMERGENCY BATTERY OPTIONS

**EMRM\*** - 7W REMOTE EMERGENCY BATTERY  
(50' MAX)



A	B	C
1.3	12.6	13.0

**EMEN\*** - 7W REMOTE EMERGENCY BATTERY  
WITH ENCLOSURE (50' MAX)



A	B	C
2.0	17.0	6.2

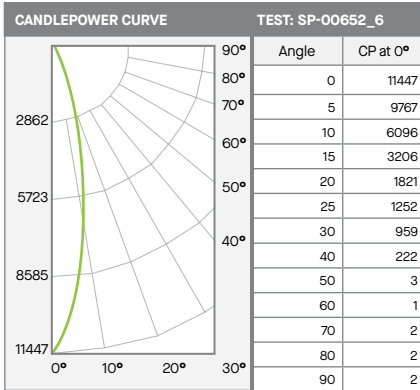
\*OTHER EM BATTERY SIZES AVAILABLE, CONSULT FACTORY

# 8" ROUND ACCENT DIRECT

## STAGE-PRO SERIES / PHOTOMETRIC DATA



### C0812YKXT-30LxxK-NDEX-TSG-NL



ZONAL LUMENS		
0-10	844	29%
0-20	1870	64%
0-30	2491	85%
0-40	2880	98%
0-60	2935	100%
0-80	2938	100%
0-90	2939	100%
Total Lumens	2939	100%

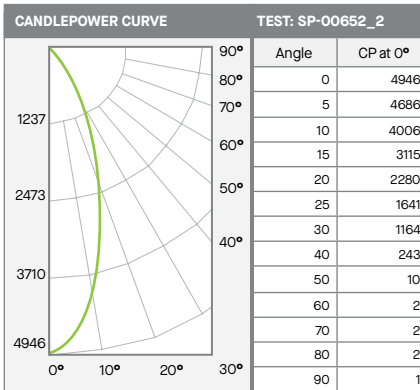
### 30L NARROW - 83 CRI

SINGLE UNIT: PERFORMANCE			
INITIAL FOOTCANDLES AND BEAM ANGLE DIAMETERS			
Mounting Height*	FC at Center	Diameter of Beam**	FC at Beam**
5.5'	378	2.1'	183
6.5'	271	2.5'	131
7.5'	204	2.8'	98
8.5'	158	3.2'	76
10.0'	114	3.8'	55
12.0'	79	4.5'	38
14.0'	58	5.3'	28
16.0'	45	6.0'	22

\* From aperture to horizontal surface below.  
\*\* At IESNA defined Beam Angle, to 50% Max. CP.

Delivered Lumens: 2939 CP @ 0° (Nadir): 11447 Spacing Ratio: 0.36  
 Luminaire Watts: 32.6 Beam Angle: 21.4° Output Multipliers: 10L x 0.32, 13L x 0.43, 20L x 0.66  
 LER: 90 CRI: 83

### C0812YKXT-30LxxK-MDEX-TSG-NL



ZONAL LUMENS		
0-10	427	17%
0-20	1299	50%
0-30	2072	80%
0-40	2504	97%
0-60	2576	100%
0-80	2579	100%
0-90	2581	100%
Total Lumens	2581	100%

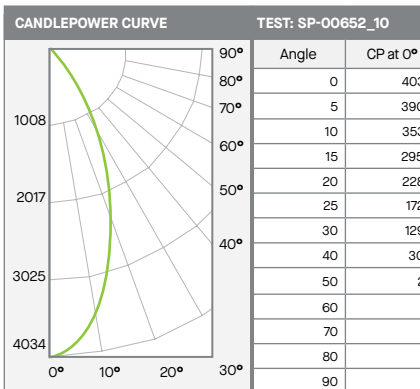
### 30L MEDIUM - 83 CRI

SINGLE UNIT: PERFORMANCE			
INITIAL FOOTCANDLES AND BEAM ANGLE DIAMETERS			
Mounting Height*	FC at Center	Diameter of Beam**	FC at Beam**
5.5'	164	3.8'	73
6.5'	117	4.4'	52
7.5'	88	5.1'	39
8.5'	68	5.8'	31
10.0'	49	6.8'	22
12.0'	34	8.2'	15
14.0'	25	9.6'	11
16.0'	19	10.9'	9

\* From aperture to horizontal surface below.  
\*\* At IESNA defined Beam Angle, to 50% Max. CP.

Delivered Lumens: 2581 CP @ 0° (Nadir): 4946 Spacing Ratio: 0.62  
 Luminaire Watts: 32.6 Beam Angle: 37.7° Output Multipliers: 10L x 0.32, 13L x 0.43, 20L x 0.66  
 LER: 79 CRI: 83

### C0812YKXT-30LxxK-WDEX-TSG-NL



ZONAL LUMENS		
0-10	361	14%
0-20	1179	46%
0-30	1980	77%
0-40	2474	96%
0-60	2572	100%
0-80	2575	100%
0-90	2577	100%
Total Lumens	2577	100%

### 30L WIDE - 83 CRI

SINGLE UNIT: PERFORMANCE			
INITIAL FOOTCANDLES AND BEAM ANGLE DIAMETERS			
Mounting Height*	FC at Center	Diameter of Beam**	FC at Beam**
5.5'	133	4.5'	57
6.5'	95	5.4'	41
7.5'	72	6.2'	31
8.5'	56	7.0'	24
10.0'	40	8.2'	17
12.0'	28	9.9'	12
14.0'	21	11.5'	9
16.0'	16	13.2'	7

\* From aperture to horizontal surface below.  
\*\* At IESNA defined Beam Angle, to 50% Max. CP.

Delivered Lumens: 2577 CP @ 0° (Nadir): 4034 Spacing Ratio: 0.7  
 Luminaire Watts: 32.6 Beam Angle: 44.8° Output Multipliers: 10L x 0.32, 13L x 0.43, 20L x 0.66  
 LER: 79 CRI: 83

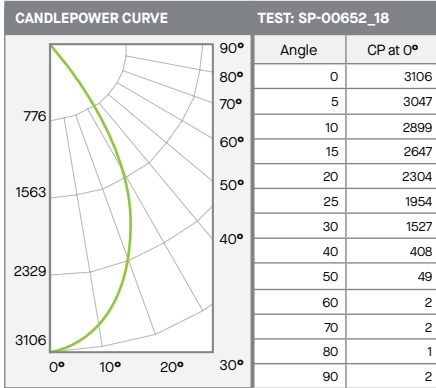
# 8" ROUND ACCENT DIRECT

STAGE-PRO SERIES / PHOTOMETRIC DATA



C0812YKXT-30LxxK-XWEX-TSG-NL

30L XTRA WIDE - 83 CRI



ZONAL LUMENS		
0-10	286	11%
0-20	1021	38%
0-30	1915	71%
0-40	2525	94%
0-60	2679	100%
0-80	2683	100%
0-90	2685	100%
Total Lumens	2685	100%

SINGLE UNIT: PERFORMANCE			
INITIAL FOOTCANDLES AND BEAM ANGLE DIAMETERS			
Mounting Height*	FC at Center	Diameter of Beam**	FC at Beam**
5.5'	103	6.2'	39
6.5'	74	7.4'	28
7.5'	55	8.5'	21
8.5'	43	9.6'	16
10.0'	31	11.3'	12
12.0'	22	13.6'	8
14.0'	16	15.9'	6
16.0'	12	18.1'	5

\* From aperture to horizontal surface below.  
 \*\* At IESNA defined Beam Angle, to 50% Max. CP.

Delivered Lumens: 2685    CP @ 0° (Nadir): 3106    Spacing Ratio: 0.9  
 Luminaire Watts: 32.6    Beam Angle: 59.1°    Output Multipliers: 10L x 0.32, 13L x 0.43, 20L x 0.66  
 LER: 82    CRI: 83