

SGP5XT - TRIM FLANGE / NON-IC RATED

APPLICATION

Pull Down adjustable accent light for retail, residential and commercial ceiling.

FEATURES

LED assembly pulls down to 35° and rotates 360° for optimal aiming. Single optical system for smooth light distribution and focus control. Quick change LED module with interchangeable optics for job site adjustment and fixture maintenance. Shallow plenum design. Tool-less driver and j-box access. Posi-lock trim retention torsion springs. Front loading bezel for lens or louver accessories.

TRIM FINISH

A variety of architectural powdercoat and anodized finishes are available.

Matte White flange is standard.

ELECTRONICS

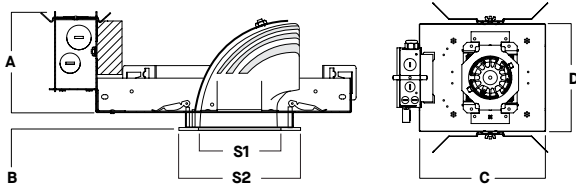
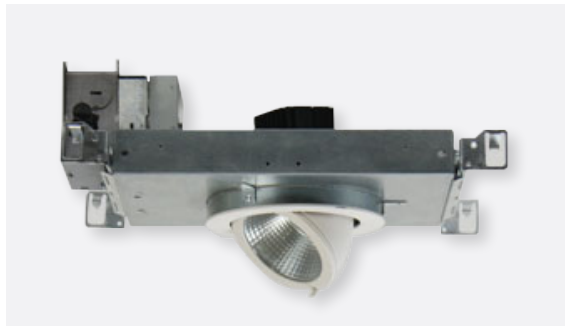
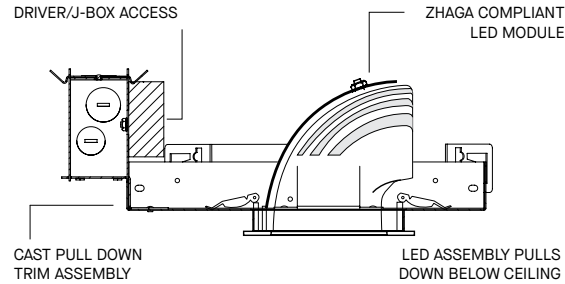
LED system features Xicato LED module with proprietary phosphor technology that provides consistent, stable color with CCT control of +/- 100K over life of the light engine. Base CRI is 83 with 2 MacAdam Ellipse binning. High CRI is 98 with 1 MacAdam Ellipse binning. Variety of electronic 120V/277V and dimming drivers.

CONSTRUCTION

Housing/frame constructed of #20 ga. galvanized steel to resist corrosion. Die cast three piece trim. Spun high performance internal aluminum reflector.

CODE COMPLIANCE

BAA Compliant. Non-IC rated. ETL certified to meet US and Canadian standards. Suitable for dry or damp locations. Manufactured and tested to UL standards No. 1598/8750.



A	B	C	D	S1	S2
4.1	.625	12.9	9.6	3.37	4.25
104.1 mm	15.9 mm	396.2 mm	279.4 mm	6.5 mm	107.0 mm

WATTAGE TO LUMENS UPDATE			
CURRENT PART NUMBER EXAMPLE	PREVIOUS PART NUMBER EXAMPLE	SOURCE LUMENS ¹	SYSTEM WATTS
SGP5XT10L	SGP5UDLEDX15W	1000	9.1
SGP5XT13L	SGP5UDLEDX20W	1300	13.0
SGP5XT20L	SGP5UDLEDX33W	2000	21.7
SGP5XT30L	SGP5UDLEDX52W	3000	32.6

SERIES	LUMENS ¹	CCT	DRIVER / DIMMING / VOLTAGE ²	OPTIONS ⁴	TRIM	LUMENS ¹	CCT	BEAM	FINISH	TRIM OPTIONS							
SGP5XT	83 CRI		E Electronic Driver DS10_ 10% 0-10V DO10_ 1% 0-10V DS2W1 1%, ELV/MLV, 120V DL3E_ 1% Lutron® EcoSystem®, Fade EL10_ 1%, eldoLED ED01_ 0.1%, eldoLED DAL1_ DALI Control DMXS_3 DMX Standard Configuration DMXC_3 DMX Non-Standard Custom	1 120V 2 277V	H12⁵ 12" - 24" Expandable Bars HO6 6" - 12" Expandable Bars FS Fusing CR Corrosion Resistant PR⁶ Deep Ceiling Extension TBC T-Bar Clips EM Emergency Battery Pack GR Goof Ring EB Black Housing	PD05XT	83 CRI		MD 24° WD 38°	MW Matte White MB Matte Black PT Platinum Silver CC⁷ Custom Color	GL⁸ Clear Glass Lens SO Micro Prism Solite™ Lens FG Frosted Glass Lens GS Gasket						
	10L	1000 Lm					27K	2700K				10L	1000 Lm	27K	2700K		
	13L	1300 Lm					30K	3000K				13L	1300 Lm	30K	3000K		
	20L	2000 Lm					35K	3500K				20L	2000 Lm	35K	3500K		
	30L	3000 Lm					40K	4000K				30L	3000 Lm	40K	4000K		
	98 CRI													98 CRI			
	10L	1000 Lm					27HK	2700K				10L	1000 Lm	27HK	2700K		
	13L	1300 Lm					30HK	3000K				13L	1300 Lm	30HK	3000K		
	20L	2000 Lm					35HK	3500K				20L	2000 Lm	35HK	3500K		
	30L	3000 Lm					40HK	4000K				30L	3000 Lm	40HK	4000K		

EXAMPLE: SGP5XT10L35KE1/H12/PD05XT10L27KMDMWSO

NOTES:
 1 Nominal Source Lumens at Any CCT 2 Contact Factory for Additional Options 3 Contact Factory 4 See Product Options Page for Details 5 Standard Bar Hangers 6 Contact Factory 7 Contact Factory for Special Finishes 8 Standard Lens

PROJECT: _____
 QUANTITY: _____ TYPE: _____

