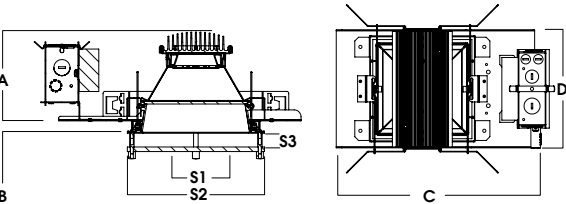
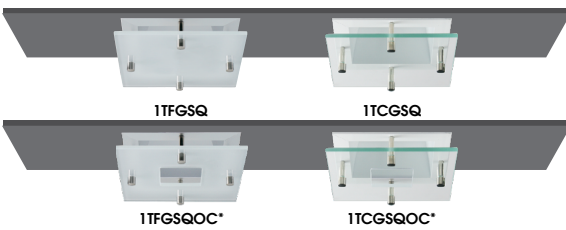
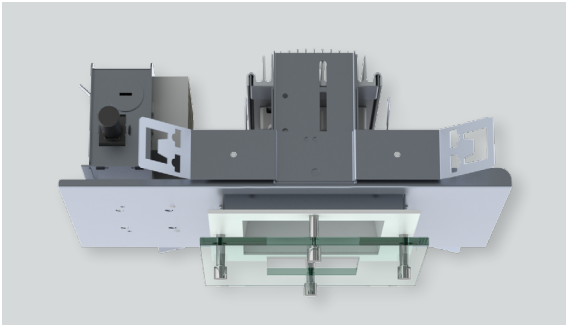




6" ILLUMITECH DECORATIVE ACCENT OS SERIES / 4500 LUMENS MAX



A	B	C	D	S1	S2	S3*
4.9	0.625	14.2	7.9	4.0	7.5	.75
124.5 mm	15.9 mm	360.7 mm	200.7 mm	101.6 mm	190.5 mm	19.05 mm

SGE6SQLEDOS - DECORATIVE TRIM / NON-IC RATED

APPLICATION

Illumitech decorative accent LED series creates ceiling brightness and visual interest while delivering performance illumination.

FEATURES

Decorative accent elements mechanically attach to reflector trim. Two-stage optical system for smooth light distribution. Zhaga International Standard LED module for ease of maintenance and replacement. Shallow plenum design. Tool-less LED module, driver and J-Box access. Multi-Bar mounting brackets. BH27 Standard mounting bars included. Posi-lock trim retention torsion springs. Integral 0.625" collar.

TRIM FINISH

A variety of powdercoat and anodized finishes are available. Matte white trim and matching self-flange is standard.

ELECTRONICS

LED module features high brightness white Osram LEDs. 3-step MacAdam Ellipse binning and CRI 84 minimum. Full range of electronic 120V/277V and dimming drivers.

CONSTRUCTION

Housing/frame constructed of #20 ga. galvanized steel to resist corrosion. Decorative glass is fabricated and tempered. Passive machined aluminum heatsink.

CODE COMPLIANCE

BAA Compliant. Non-IC rated. ETL certified to meet US and Canadian standards. Suitable for dry or damp locations. Optional Wet location. LM79/LM80/TM21 data available. Manufactured and tested to UL standards No. 1598/8750.

WATTAGE TO LUMENS UPDATE			
CURRENT PART NUMBER EXAMPLE	PREVIOUS PART NUMBER EXAMPLE	SOURCE LUMENS ¹	SYSTEM WATTS
SGE6SQLEDOS10L	SGE6SQLEDOS14W	1100	11
SGE6SQLEDOS20L	SGE6SQLEDOS25W	2000	20
SGE6SQLEDOS30L	SGE6SQLEDOS35W	3000	28
SGE6SQLEDOS45L	N/A	4500	41

SERIES	LUMENS ¹	CCT	DRIVER / VOLTAGE ²	OPTIONS ⁴	TRIM	FINISH	TRIM OPTIONS	
SGE6SQLEDOS	10L 1100 Lm	27K 2700K	E Electronic Driver DS10 10%, 0-10V DO10 1%, 0-10V DS2W1 1%, ELV/MLV, 120V DLTE1 1% Lutron® 2-Wire Forward Phase, 120V DL3E 1% Lutron® EcoSystem®, Fade EL10 1%, eldoLED ED01 0.1%, eldoLED DALI DALI Control DMXS³ DMX Standard Configuration DMXC³ DMX Non-Standard Custom	1 120V 2 277V	BH27⁵ 27" Solid Bars H12 12" - 24" Expandable Bars H06 6" - 12" Expandable Bars CB24 24" C-Channel Bars FS Fusing EB Fixture Painted Black CR Corrosion Resistant PR⁶ Deep Ceiling Extension GR Goof Ring ZIG⁷ ZigBee Module BLU⁷ Bluetooth LE EM⁸ 7W Emergency Battery Test Switch Remote EMIT⁹ 7W Emergency Battery Test Switch in Trim AMB Anti-Microbial Finish	CA0366OS	MW¹⁰ Matte White MB Matte Black PT Platinum Silver BZ Bronze OB Oil Rubbed Bronze CH Charcoal AS Anodic Sapphire AN Anodic Natural AC Anodic Champagne AZ Anodic Bronze AK Anodic Black AM Anodic Malachite SN Sun Gold CO Copper Metallic GH Graphite CC¹¹ Custom Color	SO¹² Micro Prism Solite™ Lens WL Wet Location EMIT⁷ Emergency Test Switch in Trim PF¹³ Polished Flange AMB Anti-Microbial Finish DECORATIVE TRIM 1TFGSQ Square Tier Frosted Glass 1TCGSQ Square Tier Clear Glass 1TFGSQOC Square Open Center Tier Frosted Glass 1TCGSQOC Square Open Center Tier Clear Glass
	20L 2000 Lm	30K 3000K						
	30L 3000 Lm	35K 3500K						
	45L 4500 Lm	40K 4000K						

EXAMPLE: SGE6SQLEDOS20L30KE1FS/CA0366OSMWSO1TFGSQOC

NOTES:
 1 Nominal Source Lumens at 35K 2 Contact Factory for Additional Options 3 Contact Factory 4 See Product Options Page for Details 5 Standard Bar Hangers 6 Contact Factory 7 Order DS101/2 When Specifying ZIG or BLU
 8 Standard EM 9 EMIT Suffix Required on Trim and Housing 10 Standard Finish 11 Contact Factory for Special Finishes 12 Required 13 Flange and Reflector Same Finish



PROJECT: _____
 TYPE: _____



Dimensions and values shown are nominal. Spectrum Lighting continually works to improve products and reserves the right to make changes which may alter the performance or appearance of products.