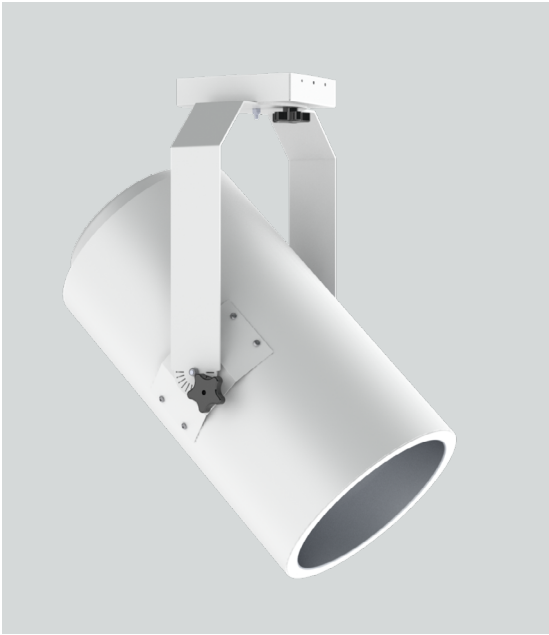


12" ROUND ACCENT DIRECT

GENERAL ILLUMINATION



CYK1220GV - YOKE MOUNT

APPLICATION

12" round x 20" high Theatrical Pro Pendant for auditorium and area lighting. Adjustable / lockable token for aiming and adjustment.

FEATURES

Architectural high performance LED Cylinder luminaire. Designed to illuminate auditoriums, houses of worship and other spaces where LED color quality and control are required. This series offers .01% dim to black as well as DMX, ELV and DALI dimming. Rugged design with flexible mounting, finish and LED options make these extremely versatile fixtures.

FINISH

Multi-stage polyester powder-coat process applied on our dedicated paint lines. See mounting and color pages for standard finishes. All exposed materials are chromate pre-treated to resist corrosion.

ELECTRONICS

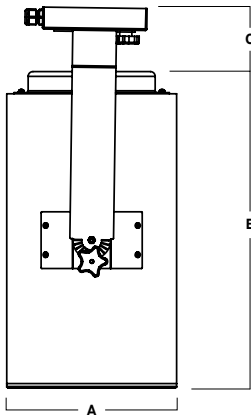
GV LED system features high brightness white Samsung LED's. 3-step MacAdam Ellipse binning. Standard CRI: 85+. Higher CRI, R9 and custom LED configurations are available; consult factory. Variety of electronic 120V/277V and dimming drivers. DMX controls available.

CONSTRUCTION

Fabricated seamless aluminum fixture housing. Specular primary optical reflectors provide high efficiency illumination. Stainless steel hardware with galvanized steel brackets to resist corrosion. One piece reflector trim spun from .063 thick high purity aluminum and finished to specification.

CODE COMPLIANCE

BAA compliant. ETL certified to meet US and Canadian standards. Suitable for dry or damp locations. Manufactured and tested to UL standards No. 1598/8750.



A	B	C
11.7 297.2 mm	21.6 548.6 mm	4.4 111.8 mm

LUMENS / WATTAGE DATA				
PART NUMBER	SOURCE LUMENS ¹	DELIVERED LUMENS ²	SYSTEM WATTS	LPW
CYK1220GV15L	1500	1041	10	104
CYK1220GV27L	2700	1818	18	101
CYK1220GV37L	3700	2666	26	103
CYK1220GV55L	5500	3927	39	101

SERIES	LUMENS ¹	CCT	DRIVER / DIMMING ³	OPTIONS ⁴	TRIM	MOUNTING ⁹	FINISH ¹¹
CYK1220GV	15L 1500 Lm	27K 2700K	EX Electronic Driver, 120V/277V	FS Fuse Holder and Fuse	TSG ⁷ Semi Diffuse Low Iridescent Clear	SM Surface Mount	MW ¹² Matte White MB ¹² Matte Black PT ¹² Platinum Silver CC Custom Color
	27L 2700 Lm	30K 3000K	DS10X 10%, 0-10V, 120V/277V	SC1 Safety Cable	TCY Same Color as Cylinder Custom Color		
	37L 3700 Lm	35K 3500K	DO10X 1%, 0-10V, 120V/277V		TCC Custom Color		
	55L 5500 Lm	40K 4000K	DS2W1 ELV / MLV, 120V				
		50K 5000K	DLTE ⁴ Lutron 2-Wire Forward Phase (MLV), 120V				
			DL3EX ⁴ 1%, Lutron® EcoSystem® Fade, 120V/277V		LENS	EMERGENCY BATTERY OPTIONS	
			ED01X 0.1%, eldoLED 120V/277V		SO ⁸ Micro Prism Solite™ Lens	EMIT ¹⁰ 7W Emergency Battery Test Switch	
			DALIX DALI Control		FG Frosted Glass Lens	EMRM 7W Remote EM	
			DMXS ⁵ DMX Standard Configuration				
			DMXC ⁵ DMX Non-Standard Custom				

EXAMPLE: CYK1220GV37L35KDS10X/TGSO/SM/MW

NOTES:
 1 Nominal Source Lumens at 35K 2 Nominal Delivered Lumens at 35K with TSG-SO 3 Contact Factory for Additional Options 4 37L Max 5 Contact Factory 6 See Product Options Page For Details 7 Standard Finish
 8 Standard Lens 9 See Mounting Page for Details on Components and Finishes 10 EMIT Up to 37L 11 Reference Color Sheet Located on Product Webpage for Full List of Available Colors 12 Standard Finishes



PROJECT: _____
 TYPE: _____



Dimensions and values shown are nominal. Spectrum Lighting continually works to improve products and reserves the right to make changes which may alter the performance or appearance of products.

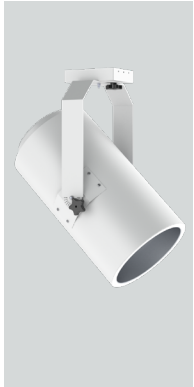
12" ROUND ACCENT DIRECT

GENERAL ILLUMINATION / FIXTURE OPTIONS



STANDARD FINISHES

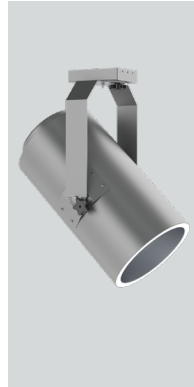
MW
MATTE WHITE



MB
MATTE BLACK



PT
PLATINUM SILVER

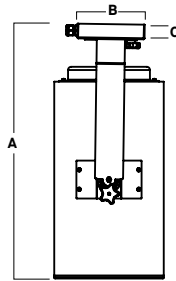


MOUNTING TYPES

YK
YOKE MOUNT

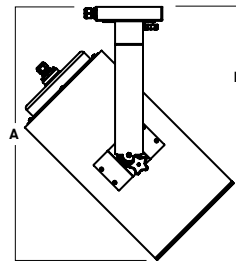


180° VERTICAL



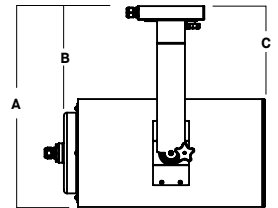
A	B	C
26.0	72	1.5
660.4 mm	182.9 mm	38.1 mm

45° TILT



A	B
271	14.8
688.3 mm	375.9 mm

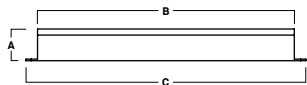
90° TILT



A	B	C
21.7	10.1	13.7
551.2 mm	256.5 mm	348.0 mm

REMOTE EMERGENCY BATTERY OPTIONS

EMRM* - 7W REMOTE EMERGENCY BATTERY
(50' MAX)



A	B	C
1.3	12.6	13.0

*OTHER EM BATTERY SIZES AVAILABLE. CONSULT FACTORY

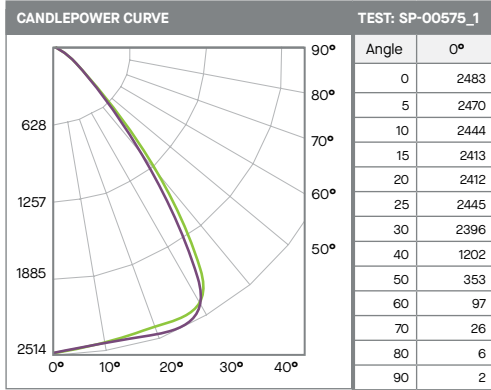
12" ROUND ACCENT DIRECT

GENERAL ILLUMINATION / PHOTOMETRIC DATA



C12xxGV-55L35K-EX-TSG-SO

55L - 85 CRI



ZONAL LUMENS		
0-10	236	6%
0-20	931	24%
0-30	2071	53%
0-40	3190	81%
0-60	3853	98%
0-80	3923	100%
0-90	3927	100%
Total Lumens	3927	100%

SINGLE UNIT: PERFORMANCE			
INITIAL FOOTCANDLES AND BEAM ANGLE DIAMETERS			
Mounting Height*	FC at Center	Diameter of Beam**	FC at Beam**
5.5'	82	7.7'	28
6.5'	59	9.1'	20
7.5'	44	10.5'	15
8.5'	34	11.9'	12
10.0'	25	14.0'	8
12.0'	17	16.8'	6
14.0'	13	19.6'	4
16.0'	10	22.4'	3

* From aperture to horizontal surface below.
 ** At IESNA defined Beam Angle, to 50% Max. CP.

Green: 0-180
 Purple: 45-225

Delivered Lumens: 3927 CP @ 0° (Nadir): 2483
 Luminaire Watts: 39 Beam Angle: 70°
 LER: 101 CRI: 84

Spacing Ratio: 1.32
 Output Multipliers: 15L x 0.27, 27L x 0.49, 37L x 0.67