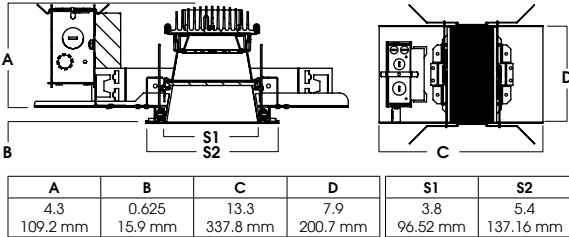
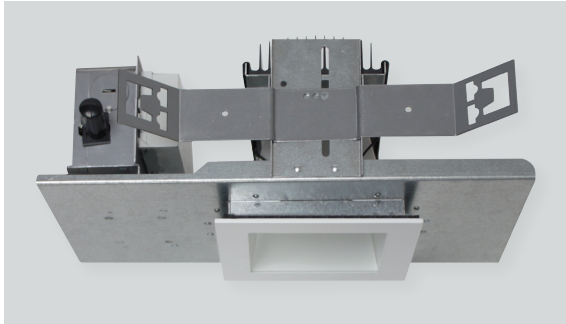
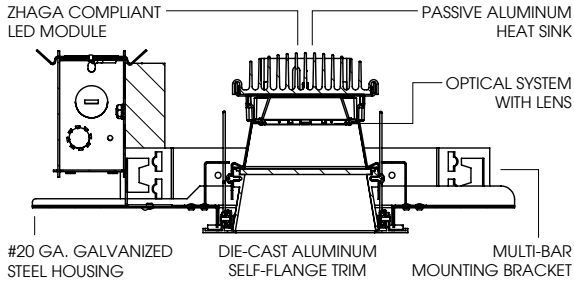


4" SQUARE LED DOWNLIGHT

OS SERIES / 4500 LUMENS MAX



SGE4SQLEDOS - TRIM FLANGE / NON-IC RATED

APPLICATION

4" LED Recessed square aperture downlight for general downlighting.

FEATURES

Two-stage optical system for smooth light distribution. Zhaga International Standard LED module for ease of maintenance and replacement. Shallow plenum design. Tool-less LED module, driver and J-Box access. Multi-Bar mounting brackets. BH27 Standard mounting bars included. Posi-lock trim retention torsion springs. Integral 0.625" collar.

TRIM FINISH

A variety of powdercoat and anodized finishes are available. Matte white flange is standard.

ELECTRONICS

LED module features high brightness white Osram LEDs. 3-step MacAdam Ellipse binning and CRI 84 minimum. Full range of electronic 120V/277V and dimming drivers.

CONSTRUCTION

Housing/frame constructed of #20 ga. galvanized steel to resist corrosion. Self-Flanged one piece trim die-cast high purity aluminum and finished to specification. Passive machined aluminum heatsink.

CODE COMPLIANCE

BAA Compliant. Non-IC rated. ETL certified to meet US and Canadian standards. Suitable for dry or damp locations. Optional Wet location. LM79/LM80/TM21 data available. Manufactured and tested to UL standards No. 1598/8750.

WATTAGE TO LUMENS UPDATE					
CURRENT PART NUMBER EXAMPLE	PREVIOUS PART NUMBER EXAMPLE	SOURCE LUMENS ¹	DELIVERED LUMENS ²	SYSTEM WATTS	LPW
SGE4SQLEDOS10L	SGE4SQLEDOS14W	1100	737	11	67
SGE4SQLEDOS15L	N/A	1500	871	13	67
SGE4SQLEDOS20L	SGE4SQLEDOS25W	2000	1280	20	64
SGE4SQLEDOS30L	SGE4SQLEDOS35W	3000	1736	28	62
SGE4SQLEDOS45L	N/A	4500	2460	41	60

SERIES	LUMENS ¹	CCT	DRIVER / VOLTAGE ³	OPTIONS ⁴	TRIM	FINISH	TRIM OPTIONS	
SGE4SQLEDOS	10L 1100 Lm	27K 2700K	E Electronic Driver DS10_ 10%, 0-10V DO10_ 1%, 0-10V DS2W1 1%, ELV/MLV, 120V DLTE1 1% Lutron® 2-Wire Forward Phase, 120V DL3E_ 1% Lutron® EcoSystem®, Fade EL10_ 1%, eldoLED ED01_ 0.1%, eldoLED DALI_ DALI Control	1 120V 2 277V	BH27 ⁵ 27" Solid Bars H12 12" - 24" Expandable Bars H06 6" - 12" Expandable Bars CB24 24" C-Channel Bars FS Fusing EB Fixture Painted Black CR Corrosion Resistant PR ⁶ Deep Ceiling Extension GR Goof Ring ZIG ⁷ ZigBee Module BLU ⁷ Bluetooth LE EM ⁸ 7W Emergency Battery Test Switch Remote EMIT ⁹ 7W Emergency Battery Test Switch in Trim AMB Anti-Microbial Finish	CA0244OS	MW ¹⁰ Matte White MB Matte Black PT Platinum Silver BZ Bronze OB Oil Rubbed Bronze CH Charcoal AS Anodic Sapphire AN Anodic Natural AC Anodic Champagne AZ Anodic Bronze AK Anodic Black AM Anodic Malachite SN Sun Gold CO Copper Metallic GH Graphite CC ¹¹ Custom Color	SO ¹² Micro Prism Solite™ Lens FG Frosted Glass Lens FGCC Frosted Glass Clear Center FO90 White Optical Acrylic GS Gasket WL Wet Location EMIT ⁹ Emergency Test Switch in Trim PF ¹³ Polished Flange AMB Anti-Microbial Finish
	15L 1500 Lm	30K 3000K						
	20L 2000 Lm	35K 3500K						
	30L 3000 Lm	40K 4000K						
	45L 4500 Lm							

EXAMPLE: SGE4SQLEDOS10L35KE1/CA0244OSMWSO

NOTES:
 1 Nominal Source Lumens at 35K 2 Nominal Delivered Lumens at 35K with MW-SO 3 Contact Factory for Additional Options 4 See Product Options Page for Details 5 Standard Bar Hangers 6 Contact Factory
 7 Order DS10/2 When Specifying ZIG or BLU 8 Standard EM 9 EMIT Suffix Required on Trim and Housing 10 Standard Finish 11 Contact Factory for Special Finishes 12 Standard Lens 13 Flange and Reflector Same Finish



PROJECT: _____
 TYPE: _____



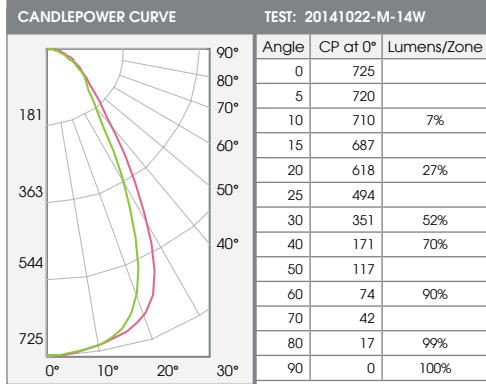
Dimensions and values shown are nominal. Spectrum Lighting continually works to improve products and reserves the right to make changes which may alter the performance or appearance of products.

4" SQUARE LED DOWNLIGHT OS SERIES / PHOTOMETRIC DATA

recessed
fixtures



SGE4SQLEDOS14W35KE1-CA0244OSMWSO



Delivered Lumens: 964
Luminaire Watts: 14.4
LER: 67

CP @ 0° (Nadir): 725
Beam Angle: 60°
Spacing Ratio: 0.96

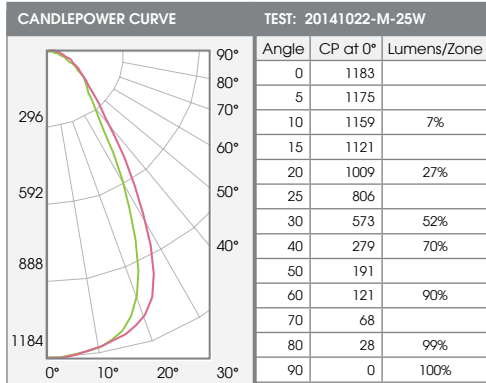
SINGLE UNIT: PERFORMANCE INITIAL FOOTCANDLES AND BEAM ANGLE DIAMETERS			
Mounting Height*	FC at Center	Diameter of Beam**	FC at Edge**
5.5'	24	6.4'	9
6.5'	17	7.5'	6
7.5'	13	8.7'	5
8.0'	11	9.2'	4
8.5'	10	9.8'	4
9.0'	9	10.4'	3
10.0'	7	11.5'	3
11.0'	6	12.7'	2

* From aperture to horizontal surface below.
** At IESNA defined Beam Angle, to 50% Max. CP.

MULTIPLE UNITS: PERFORMANCE 80/50/20% REFLECTANCES INITIAL FOOTCANDLES AND WATTS PER SQUARE FOOT					
Ceiling Height	Fixture Spacing	RCR 2: Large Room		RCR 4: Medium Room	
		FC*	W/Sq. Ft.	FC*	W/Sq. Ft.
8'	4'	51	0.79	48	0.90
	5'	36	0.56	36	0.68
9'	5'	33	0.51	34	0.64
	6'	23	0.35	27	0.51
10'	5'	29	0.46	26	0.48
	6'	26	0.40	21	0.40
11'	6'	24	0.36	20	0.38
	7'	17	0.27	16	0.29
Delivered Illuminance Rating: (DIR)		64 FC per W/Sq. Ft.		53 FC per W/Sq. Ft.	
*Average Footcandles at 2.5' above floor.					

CCT: 3500° K CRI: 84 CCT Output Factors: 40K 103%, 30K 95%, 27K 89% Multiplier for FC Values at 9W: 0.56

SGE4SQLEDOS25W35KE1-CA0244OSMWSO



Delivered Lumens: 1574
Luminaire Watts: 25.6
LER: 61

CP @ 0° (Nadir): 1183
Beam Angle: 60°
Spacing Ratio: 0.96

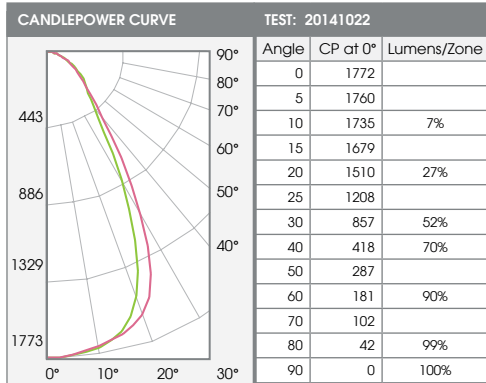
SINGLE UNIT: PERFORMANCE INITIAL FOOTCANDLES AND BEAM ANGLE DIAMETERS			
Mounting Height*	FC at Center	Diameter of Beam**	FC at Edge**
6.5'	28	7.5'	11
7.5'	21	8.7'	8
8.0'	18	9.2'	7
8.5'	16	9.8'	6
9.0'	15	10.4'	5
10.0'	12	11.5'	4
11.0'	10	12.7'	4
12.0'	8	13.9'	3

* From aperture to horizontal surface below.
** At IESNA defined Beam Angle, to 50% Max. CP.

MULTIPLE UNITS: PERFORMANCE 80/50/20% REFLECTANCES INITIAL FOOTCANDLES AND WATTS PER SQUARE FOOT					
Ceiling Height	Fixture Spacing	RCR 2: Large Room		RCR 4: Medium Room	
		FC*	W/Sq. Ft.	FC*	W/Sq. Ft.
9'	5'	53	0.90	56	1.14
	6'	37	0.62	44	0.90
10'	5'	48	0.81	42	0.85
	6'	42	0.71	35	0.71
11'	6'	39	0.65	33	0.67
	7'	28	0.48	26	0.52
12'	7'	27	0.45	27	0.54
	8'	23	0.39	20	0.40
Delivered Illuminance Rating: (DIR)		59 FC per W/Sq. Ft.		49 FC per W/Sq. Ft.	
*Average Footcandles at 2.5' above floor.					

CCT: 3500° K CRI: 84 CCT Output Factors: 40K 103%, 30K 95%, 27K 89%

SGE4SQLEDOS35W35KE1-CA0244OSMWSO



Delivered Lumens: 2356
Luminaire Watts: 35.2
LER: 67

CP @ 0° (Nadir): 1772
Beam Angle: 60°
Spacing Ratio: 0.96

SINGLE UNIT: PERFORMANCE INITIAL FOOTCANDLES AND BEAM ANGLE DIAMETERS			
Mounting Height*	FC at Center	Diameter of Beam**	FC at Edge**
7.5'	32	8.7'	12
8.0'	28	9.2'	10
8.5'	25	9.8'	9
9.0'	22	10.4'	8
10.0'	18	11.5'	7
11.0'	15	12.7'	5
12.0'	12	13.9'	5
14.0'	9	16.2'	3

* From aperture to horizontal surface below.
** At IESNA defined Beam Angle, to 50% Max. CP.

MULTIPLE UNITS: PERFORMANCE 80/50/20% REFLECTANCES INITIAL FOOTCANDLES AND WATTS PER SQUARE FOOT					
Ceiling Height	Fixture Spacing	RCR 2: Large Room		RCR 4: Medium Room	
		FC*	W/Sq. Ft.	FC*	W/Sq. Ft.
10'	5'	72	1.12	63	1.17
	6'	63	0.98	52	0.98
11'	6'	58	0.89	49	0.92
	7'	43	0.66	38	0.72
12'	7'	40	0.62	40	0.74
	8'	35	0.53	30	0.55
14'	7'	40	0.62	35	0.65
	8'	34	0.53	26	0.49
Delivered Illuminance Rating: (DIR)		64 FC per W/Sq. Ft.		53 FC per W/Sq. Ft.	
*Average Footcandles at 2.5' above floor.					

CCT: 3500° K CRI: 84 CCT Output Factors: 40K 103%, 30K 95%, 27K 89%