



1" ROUND DOWNLIGHT

700 LUMENS MAX

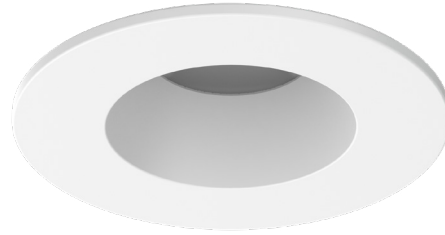
UNIVERSAL HOUSINGS WITH INTERCHANGEABLE TRIMS

Spectrum's A Spec 1" recessed round downlight series features a shallow plenum housing and trim for accent and general illumination.

LUMENS AND WATTAGE CHART					
PART NUMBER	LUMENS	SOURCE LUMENS ²	DELIVERED LUMENS ³	SYSTEM WATTS	LPW
DL	004	400	328	6.3	52
DL	007 ¹	700	574	9.7	59

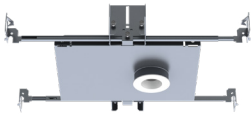
¹ Install Fixtures in Accordance with the Following Marked Spacing: (a) Center To Center of Adjacent Luminaires: 600mm (24in); (b) Top of Luminaire to overhead Building Member: 13mm (0.5in); (c) Luminaire Center to side Building Member: 300mm (12in) ² Nominal Source Lumens ³ Nominal Delivered Lumens at 935 007 DL SP MW XX

PROJECT: _____
TYPE: _____



AVAILABLE HOUSING TYPES

AS01RDFNC - New Construction / 007 Max



AS01RDFIC - IC New Construction / 007 Max



AS01RDFRT - Remodel Construction / 007 Max



- Die-cast aluminum trim with a wide variety of options.
- Shallow plenum housing.
- Universal housing accepts all trim types, including 1" square trim.
- Interchangeable optics.
- 5 year warranty on fixture and electronics.
- Sustainable fixture.

HOUSING				HOUSING OPTIONS							
SERIES	TYPE	CRI/CCT	LUMENS ²	DIMMING		MOUNTING					
AS01RDF	NC RT	New Construction	90 CRI	004	400 Lm	D4	5%, 0-10V				
		Remodel Construction	007 ¹	700 Lm	1			120V			
			927	2700K					2	277V	
			930	3000K							B1
		935	3500K								
		940	4000K								
IC	IC New Construction		004	400 Lm	B0	No Bar Hangers					
			007	700 Lm							
			927	2700K							
			930	3000K							
	935	3500K	Nominal Source Lumens								
	940	4000K									

AVAILABLE TRIM / MODULE TYPE



TRIM OPTIONS					
TRIM TYPE	BEAM	FINISH	FLANGE FINISH		
DL	Downlight	SP	Spot (19°)	MF	Matching Flange For Use with Non-White Trim Finish
		NF	Narrow Flood (26°)		
		FL	Flood (39°)		
		MW	Matte White		
		MB	Matte Black		
		PT	Platinum Silver		
CC	Custom Color				

EXAMPLE: AS01RDFNC927004/D41B1/DLSPMWMF

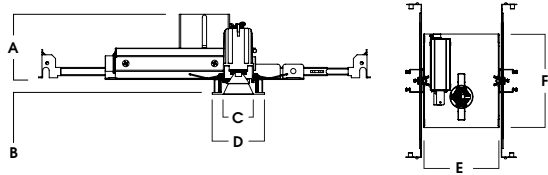
Dimensions and values shown are nominal. Spectrum Lighting continually works to improve products and reserves the right to make changes which may alter the performance or appearance of products.



HOUSING DIMENSIONS

AS01RDFNC - NEW CONSTRUCTION / 007 MAX

Non-IC rated, thermally protected frame-in kit for new construction. Non-IC designation requires insulation must be minimum of 3" from housing.



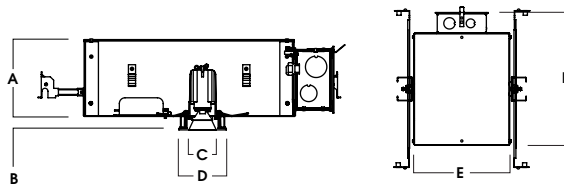
A	B	C	D	E	F
3.1	.625	1.5	2.5	7.6	9.5
78.7 mm	15.9 mm	38.1 mm	63.5 mm	193.0 mm	241.3 mm

Fixture Weight: 2.7 lb

Ceiling Cutout: $\varnothing 21^{1/8}$ "

AS01RDFIC - IC NEW CONSTRUCTION / 007 MAX

IC rated frame-in kit for new construction with direct insulation contact and CCEA (Chicago Plenum) compatibility.



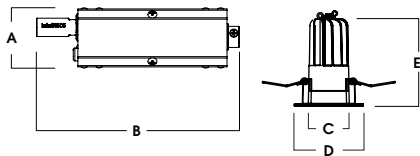
A	B	C	D	E	F
4.0	0.6	1.5	2.5	9.5	13.2
101.6 mm	15.2 mm	38.1 mm	63.5 mm	241.3 mm	335.3 mm

Fixture Weight: 4.2 lb

Ceiling Cutout: $\varnothing 21^{1/8}$ "

AS01RDFRT - REMODEL CONSTRUCTION / 007 MAX

Non-IC rated frame-in kit for existing construction. Non-IC designation requires insulation must be minimum of 3" from housing.



A	B	C	D	E
2.0	7.1	1.5	2.5	3.4
50.8 mm	180.3 mm	38.1 mm	63.5 mm	86.4 mm

Fixture Weight: 1.5 lb

Ceiling Cutout: $\varnothing 21^{1/8}$ "

FEATURES

FRAME-IN KIT

Precision Die-formed 20 gauge galvanized steel housing and tethered driver enclosure for tool-less accessibility once installed. Driver enclosure features integral thermal protector. Posi-lock trim retention springs. Integral 0.625" collar, works with up to 1" ceiling. For thicker ceilings consult factory.

MOUNTING

Multi-Bar mounting brackets. Expandable bar hangers with horizontal range of 14.2"-26". Vertical adjustment is 0.625". Ceiling materials must be rigid enough to support luminaire frame.

DRIVER

Class P constant current 0-10V dimming driver dims to 5%. Power factor >.9 typical, 50/60Hz, 100-175mA.

TRIM

Self-flanged, one-piece, die-cast aluminum finished in a variety of powdercoat options. Inside trim and flange are finished in same color unless otherwise specified (WF= White Flange).

REMODEL

Features tethered power supply and junction box with sheathed wire.

LUMEN OUTPUT

TIR optics maintain beam angles throughout 400-700 lumen output range.

LED

Nichia high power emitter. High CRI >90.

FUSING

Integral optional fast blow fuse with fuse holder.

LISTINGS

ETL Certified to meet US and Canadian Standards. Suitable for damp locations. Manufactured and tested to UL standard No. 1598/8750. BAA compliant. Insulated Ceiling (IC) options available.

WARRANTY

Fixtures, LEDs and drivers carry 5 year Spectrum warranty, as well as individual OEM warranty. Warranty is 5 years from date of manufacturing. LED system rated for operation in an ambient temperatures up to 25 °C.

TRIM / MODULE DATA

DL - DOWNLIGHT MODULE



A
3.4

PHOTOMETRIC DATA - 1" ROUND NEW CONSTRUCTION

AS01RDF NC 935 007 DL SP MW xx

CANDLEPOWER CURVE TEST SP-01014	INTENSITY CANDELA 0° AZIMUTH	ZONAL LUMENS	SINGLE UNIT: PERFORMANCE DIRECT FOOTCANDLES BASED ON DOWNLIGHT ONLY				MULTIPLE UNITS: PERFORMANCE 80/50/20% REFLECTANCES INITIAL FOOTCANDLES AND WATTS PER SQUARE FOOT							
			Mounting Height AFF	FC at Center on Floor	Beam Diameter	FC at Beam Edge	Ceiling Height	Fixture Spacing	RCR 4		RCR 6			
	0°	0° - 10°	244	43%	5.5'	120 fc	1.9'	58 fc	9'	2'	137	2.35	114	2.08
	0°	0° - 20°	476	83%	6.5'	86 fc	2.2'	41 fc	12'	3'	64	1.10	53	0.98
	5°	0° - 30°	549	96%	7.5'	65 fc	2.5'	31 fc	16'	4'	32	0.55	38	0.70
	15°	0° - 40°	563	98%	8.5'	50 fc	2.9'	24 fc	Delivered Illuminance Rating: (DIR)		58 FC per W/Sq. Ft.		55 FC per W/Sq. Ft.	
	25°	0° - 60°	569	99%	10.0'	36 fc	3.4'	17 fc	Recessed mounting Square rooms used for multiple units: RCR 4: Length & Width = Ceiling Ht. - 5.5' x 2.50 RCR 6: Length & Width = Ceiling Ht. - 5.5' x 1.66 * Average Footcandles at 2.5' Above Floor					
	35°	0° - 80°	572	100%	12.0'	25 fc	4.1'	12 fc						
	45°	0° - 80°	572	100%	14.0'	19 fc	4.7'	9 fc						
	55°	Downlight	574	100%	16.0'	14 fc	5.4'	7 fc						
	90°	Total	574	100%										

Delivered Lumens: 574
Luminaire Watts: 9.7
LER: 59.18

CRI: 90+

Beam Angle: 19°
Spacing Ratio: 0.33

Lumen Multiplier: 004 x 0.56
CCT Multiplier: 927 x 0.96, 930 x 0.99, 940 x 1.02

AS01RDF NC 935 007 DL NF MW xx

CANDLEPOWER CURVE TEST SP-01013	INTENSITY CANDELA 0° AZIMUTH	ZONAL LUMENS	SINGLE UNIT: PERFORMANCE DIRECT FOOTCANDLES BASED ON DOWNLIGHT ONLY				MULTIPLE UNITS: PERFORMANCE 80/50/20% REFLECTANCES INITIAL FOOTCANDLES AND WATTS PER SQUARE FOOT							
			Mounting Height AFF	FC at Center on Floor	Beam Diameter	FC at Beam Edge	Ceiling Height	Fixture Spacing	RCR 3		RCR 5			
	0°	0° - 10°	150	29%	5.5'	62 fc	2.6'	29 fc	9'	3'	54	1.01	45	0.92
	0°	0° - 20°	363	69%	6.5'	45 fc	3.1'	21 fc	12'	4'	33	0.62	33	0.67
	5°	0° - 30°	470	90%	7.5'	34 fc	3.5'	15 fc	16'	5'	21	0.39	16	0.33
	15°	0° - 40°	506	96%	8.5'	26 fc	4.0'	12 fc	Delivered Illuminance Rating: (DIR)		54 FC per W/Sq. Ft.		49 FC per W/Sq. Ft.	
	25°	0° - 60°	520	99%	10.0'	19 fc	4.7'	9 fc	Recessed mounting Square rooms used for multiple units: RCR 3: Length & Width = Ceiling Ht. - 5.5' x 3.33 RCR 5: Length & Width = Ceiling Ht. - 5.5' x 2.00 * Average Footcandles at 2.5' Above Floor					
	35°	0° - 80°	523	100%	12.0'	13 fc	5.6'	6 fc						
	45°	0° - 80°	523	100%	14.0'	10 fc	6.6'	4 fc						
	55°	Downlight	524	100%	16.0'	7 fc	7.5'	3 fc						
	90°	Total	524	100%										

Delivered Lumens: 524
Luminaire Watts: 9.7
LER: 54.02

CRI: 90+

Beam Angle: 26°
Spacing Ratio: 0.43

Lumen Multiplier: 004 x 0.56
CCT Multiplier: 927 x 0.96, 930 x 0.99, 940 x 1.02

AS01RDF NC 935 007 DL FL MW xx

CANDLEPOWER CURVE TEST SP-01012	INTENSITY CANDELA 0° AZIMUTH	ZONAL LUMENS	SINGLE UNIT: PERFORMANCE DIRECT FOOTCANDLES BASED ON DOWNLIGHT ONLY				MULTIPLE UNITS: PERFORMANCE 80/50/20% REFLECTANCES INITIAL FOOTCANDLES AND WATTS PER SQUARE FOOT							
			Mounting Height AFF	FC at Center on Floor	Beam Diameter	FC at Beam Edge	Ceiling Height	Fixture Spacing	RCR 3		RCR 5			
	0°	0° - 10°	88	18%	5.5'	32 fc	3.9'	13 fc	9'	4'	25	0.52	22	0.52
	0°	0° - 20°	267	56%	6.5'	23 fc	4.6'	10 fc	12'	5'	17	0.35	18	0.43
	5°	0° - 30°	399	84%	7.5'	17 fc	5.3'	7 fc	16'	6'	11	0.24	9	0.21
	15°	0° - 40°	451	95%	8.5'	13 fc	6.0'	6 fc	Delivered Illuminance Rating: (DIR)		47 FC per W/Sq. Ft.		43 FC per W/Sq. Ft.	
	25°	0° - 60°	468	99%	10.0'	10 fc	7.1'	4 fc	Recessed mounting Square rooms used for multiple units: RCR 3: Length & Width = Ceiling Ht. - 5.5' x 3.33 RCR 5: Length & Width = Ceiling Ht. - 5.5' x 2.00 * Average Footcandles at 2.5' Above Floor					
	35°	0° - 80°	473	100%	12.0'	7 fc	8.5'	3 fc						
	45°	0° - 80°	473	100%	14.0'	5 fc	9.9'	2 fc						
	55°	Downlight	474	100%	16.0'	4 fc	11.3'	2 fc						
	90°	Total	474	100%										

Delivered Lumens: 474
Luminaire Watts: 9.7
LER: 48.87

CRI: 90+

Beam Angle: 39°
Spacing Ratio: 0.63

Lumen Multiplier: 004 x 0.56
CCT Multiplier: 927 x 0.96, 930 x 0.99, 940 x 1.02



PHOTOMETRIC DATA - 1" ROUND IC CONSTRUCTION

AS01RDF IC 935 007 DL SP MW xx

CANDLEPOWER CURVE TEST SP-00827_M-7L	INTENSITY CANDELA 0° AZIMUTH	ZONAL LUMENS	SINGLE UNIT: PERFORMANCE DIRECT FOOTCANDLES BASED ON DOWNLIGHT ONLY				MULTIPLE UNITS: PERFORMANCE 80/50/20% REFLECTANCES INITIAL FOOTCANDLES AND WATTS PER SQUARE FOOT						
			Mounting Height AFF	FC at Center on Floor	Beam Diameter	FC at Beam Edge	Ceiling Height	Fixture Spacing	RCR 4		RCR 6		
	0°	0° - 10° 244 43%	6.5'	86 fc	2.2'	41 fc	12'	3'	64	0.87	53	0.77	
	0°	0° - 20° 476 83%	7.5'	65 fc	2.5'	31 fc	15'	4'	37	0.50	31	0.45	
	5°	0° - 30° 549 96%	8.5'	50 fc	2.9'	24 fc	18'	5'	24	0.33	20	0.29	
	15°	0° - 40° 563 98%	10.0'	36 fc	3.4'	17 fc	Delivered Illuminance Rating: (DIR)					73 FC per W/Sq. Ft.	69 FC per W/Sq. Ft.
	25°	0° - 60° 569 99%	12.0'	25 fc	4.1'	12 fc	Recessed mounting Square rooms used for multiple units: RCR 4: Length & Width = Ceiling Ht. - 2.5' x 2.50 RCR 6: Length & Width = Ceiling Ht. - 2.5' x 1.66 * Average Footcandles at 2.5' Above Floor						
	35°	0° - 80° 572 100%	14.0'	19 fc	4.7'	9 fc							
	45°	0° - 90° 574 100%	16.0'	14 fc	5.4'	7 fc							
	55°	0° - 90° 574 100%	20.0'	9 fc	6.8'	4 fc							
	90°	0° - 90° 574 100%	Total 574 100%										

Delivered Lumens: 574
Luminaire Watts: 7.7
LER: 74.55

CP at 0° (Nadir): 3634
CRI: 90+

Beam Angle: 19°
Spacing Ratio: 0.33

Lumen Multiplier: 004 x 0.56
CCT Multiplier: 927 x 0.96, 930 x 0.99, 940 x 1.02

AS01RDF IC 935 007 DL NF MW xx

CANDLEPOWER CURVE TEST SP-00826_M-7L	INTENSITY CANDELA 0° AZIMUTH	ZONAL LUMENS	SINGLE UNIT: PERFORMANCE DIRECT FOOTCANDLES BASED ON DOWNLIGHT ONLY				MULTIPLE UNITS: PERFORMANCE 80/50/20% REFLECTANCES INITIAL FOOTCANDLES AND WATTS PER SQUARE FOOT						
			Mounting Height AFF	FC at Center on Floor	Beam Diameter	FC at Beam Edge	Ceiling Height	Fixture Spacing	RCR 3		RCR 5		
	0°	0° - 10° 150 29%	5.5'	62 fc	2.6'	29 fc	9'	3"	54	0.81	45	0.73	
	0°	0° - 20° 363 69%	6.5'	45 fc	3.1'	21 fc	12'	4'	33	0.49	33	0.53	
	5°	0° - 30° 470 90%	7.5'	34 fc	3.5'	15 fc	15'	5'	19	0.28	19	0.31	
	15°	0° - 40° 506 96%	8.5'	26 fc	4.0'	12 fc	Delivered Illuminance Rating: (DIR)					68 FC per W/Sq. Ft.	62 FC per W/Sq. Ft.
	25°	0° - 60° 520 99%	10.0'	19 fc	4.7'	9 fc	Recessed mounting Square rooms used for multiple units: RCR 3: Length & Width = Ceiling Ht. - 2.5' x 3.33 RCR 5: Length & Width = Ceiling Ht. - 2.5' x 2.00 * Average Footcandles at 2.5' Above Floor * Exceeds Spacing Ratio by 7%						
	35°	0° - 80° 523 100%	12.0'	13 fc	5.6'	6 fc							
	45°	0° - 90° 524 100%	14.0'	10 fc	6.6'	4 fc							
	55°	0° - 90° 524 100%	16.0'	7 fc	7.5'	3 fc							
	90°	0° - 90° 524 100%	Total 524 100%										

Delivered Lumens: 524
Luminaire Watts: 7.7
LER: 68.05

CP at 0° (Nadir): 1887
CRI: 90+

Beam Angle: 26°
Spacing Ratio: 0.43

Lumen Multiplier: 004 x 0.56
CCT Multiplier: 927 x 0.96, 930 x 0.99, 940 x 1.02

AS01RDF IC 935 007 DL FL MW xx

CANDLEPOWER CURVE TEST SP-00825_M-7L	INTENSITY CANDELA 0° AZIMUTH	ZONAL LUMENS	SINGLE UNIT: PERFORMANCE DIRECT FOOTCANDLES BASED ON DOWNLIGHT ONLY				MULTIPLE UNITS: PERFORMANCE 80/50/20% REFLECTANCES INITIAL FOOTCANDLES AND WATTS PER SQUARE FOOT						
			Mounting Height AFF	FC at Center on Floor	Beam Diameter	FC at Beam Edge	Ceiling Height	Fixture Spacing	RCR 3		RCR 5		
	0°	0° - 10° 88 18%	5.5'	32 fc	3.9'	13 fc	9'	4'	25	0.41	22	0.41	
	0°	0° - 20° 267 56%	6.5'	23 fc	4.6'	10 fc	12'	5'	17	0.28	18	0.34	
	5°	0° - 30° 399 84%	7.5'	17 fc	5.3'	7 fc	15'	6'	13	0.22	11	0.20	
	15°	0° - 40° 451 95%	8.5'	13 fc	6.0'	6 fc	Delivered Illuminance Rating: (DIR)					60 FC per W/Sq. Ft.	54 FC per W/Sq. Ft.
	25°	0° - 60° 468 99%	10.0'	10 fc	7.1'	4 fc	Recessed mounting Square rooms used for multiple units: RCR 3: Length & Width = Ceiling Ht. - 2.5' x 3.33 RCR 5: Length & Width = Ceiling Ht. - 2.5' x 2.00 * Average Footcandles at 2.5' Above Floor						
	35°	0° - 80° 473 100%	12.0'	7 fc	8.5'	3 fc							
	45°	0° - 90° 474 100%	14.0'	5 fc	9.9'	2 fc							
	55°	0° - 90° 474 100%	16.0'	4 fc	11.3'	2 fc							
	90°	0° - 90° 474 100%	Total 474 100%										

Delivered Lumens: 474
Luminaire Watts: 7.7
LER: 61.56

CP at 0° (Nadir): 965
CRI: 90+

Beam Angle: 39°
Spacing Ratio: 0.63

Lumen Multiplier: 004 x 0.56
CCT Multiplier: 927 x 0.96, 930 x 0.99, 940 x 1.02

