

# 8" ROUND ACCENT DIRECT

## STAGE-PRO SERIES



### C0812YKXT - YOKE MOUNT

#### APPLICATION

8" round x 12" high XT series pro luminaire with adjustable / lockable yoke for aiming and adjustment.

#### FEATURES

Fixture tilts and locks 180° and rotates and locks 360°. May be surface, wall, or pendant mounted. Two stage optical system for smooth focused light distribution.

#### FINISH

Multi-stage polyester powder-coat process applied on our dedicated paint lines. See mounting and color pages for standard finishes. All exposed materials are chromate pretreated to resist corrosion.

#### ELECTRONICS

LED system features Xicato LED module with proprietary phosphor technology that provides consistent stable color with CCT control of +/- 100K over life of the light engine. Base CRI is 83 with 2-step MacAdam Ellipse binning. High CRI is 98 with 1 x 2-step MacAdam Ellipse binning. Variety of electronic 120V/277V and dimming drivers.

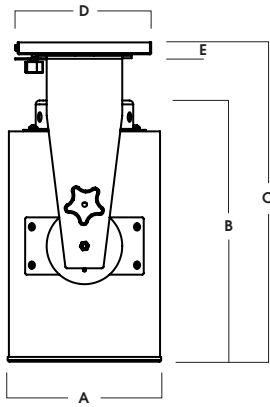
#### CONSTRUCTION

Fabricated seamless aluminum fixture housing. Specular primary optical reflectors provide high efficiency illumination. Impact resistant tempered glass lenses. Stainless steel hardware with galvanized steel brackets to resist corrosion. Trim formed from .063 thick high purity aluminum and finished to specification.

#### CODE COMPLIANCE

BAA compliant. ETL certified to meet US and Canadian standards. Suitable for dry or damp locations. Manufactured and tested to UL standards No. 1598/8750.

0° POSITION



A	B	C	D	E
8.0 203.2 mm	13.5 342.9 mm	16.0 406.4 mm	7.1 180.3 mm	.62 15.8 mm

Fixture Weight: 22.5 lbs

LUMENS / WATTAGE DATA				
PART NUMBER	SOURCE LUMENS	DELIVERED LUMENS <sup>2</sup>	SYSTEM WATTS <sup>3</sup>	LPW
C0812YKXT10L	1000	946	9.1	104
C0812YKXT13L	1300	1274	13.0	98
C0812YKXT20L	2000	1960	21.7	90
C0812YKXT30L	3000	2939	32.6	90

SERIES	LUMENS <sup>1</sup>	CCT	OPTICS	DRIVER / DIMMING <sup>5</sup>	OPTIONS <sup>8</sup>	TRIM	MOUNTING <sup>10</sup>	FINISH <sup>11</sup>				
C0812YKXT	10L	1000 Lm	83 CRI	<b>EX</b> Electronic Driver, 120V/277V <b>DS10X</b> 10%, 0-10V, 120V/277V <b>DO10X</b> 1%, 0-10V, 120V/277V <b>DS2W1</b> ELV / MLV, 120V <b>DLTE1<sup>9</sup></b> Lutron 2-Wire Forward Phase (MLV), 120V <b>DL3EX<sup>6</sup></b> 1%, Lutron® EcoSystem® Fade, 120V/277V <b>ED01X<sup>6</sup></b> 0.1%, eldoLED 120V/277V <b>DMXS<sup>7</sup></b> DMX Standard Configuration <b>DMXC<sup>7</sup></b> DMX Non-Standard Custom	<b>FS</b> Fuse Holder and Fuse <b>CR</b> Corrosion Resistant <b>SC1</b> Safety Cable <b>P1</b> 120V Twist Lock Plug <b>P2</b> 277V Twist Lock Plug	<b>TSG<sup>9</sup></b> Semi Diffuse Low Iridescent Clear <b>TCY</b> Same Color as Cylinder <b>TCC</b> Custom Color <b>NL</b> No Lens <b>SO</b> Micro Prism Solite™ Lens <b>GL</b> Clear Glass Lens <b>FG</b> Frosted Glass Lens	<b>SM</b> Surface Mount <b>EMRM</b> 7W Remote EM <b>EMEN</b> 7W Remote with Enclosure	<b>MW<sup>12</sup></b> Matte White <b>MB<sup>12</sup></b> Matte Black <b>PT<sup>12</sup></b> Platinum Silver <b>CC</b> Custom Color See Page 5 for Full Range of Color Options (83-90095)				
	13L	1300 Lm	27K 2700K						<b>XN<sup>4</sup></b> 12°	<b>DS10X</b>	<b>EMRG</b> 7W Remote EM <b>EMEN</b> 7W Remote with Enclosure	
	20L	2000 Lm	30K 3000K						<b>ND</b> 22°	<b>DO10X</b>		
	30L	3000 Lm	35K 3500K						<b>MD</b> 39°	<b>DS2W1</b>		
			40K 4000K						<b>WD</b> 46°	<b>DLTE1<sup>9</sup></b>		
	30L	3000 Lm	98 CRI						<b>XW</b> 57°	<b>DL3EX<sup>6</sup></b>		<b>EMRM</b> 7W Remote EM <b>EMEN</b> 7W Remote with Enclosure
			27HK 2700K							<b>ED01X<sup>6</sup></b>		
			30HK 3000K							<b>DMXS<sup>7</sup></b>		
			35HK 3500K							<b>DMXC<sup>7</sup></b>		
	40HK	4000K										

**EXAMPLE:** C0812YKXT20L30KNDEX/TSG/SM/MW

**NOTES:**

1 Nominal Source Lumens at Any CCT 2 Nominal Delivered Lumens at 83 CRI at Any CCT with ND-TSG-NL 3 At 83 CRI 4 XN 13L Max at 83 and 98 CRI 5 Contact Factory for Additional Options 6 Requires Longer Yoke 7 Contact Factory 8 See Product Options Page for Details 9 Standard Finish 10 See Mounting Page for Details on Components and Finishes 11 See Color Page for More Options/Consult Factory for Special Finishes 12 Standard Finishes



PROJECT: \_\_\_\_\_  
TYPE: \_\_\_\_\_



Dimensions and values shown are nominal. Spectrum Lighting continually works to improve products and reserves the right to make changes which may alter the performance or appearance of products.

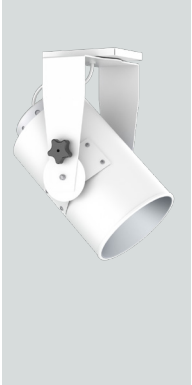
# 8" ROUND ACCENT DIRECT

## STAGE-PRO SERIES / FIXTURE OPTIONS

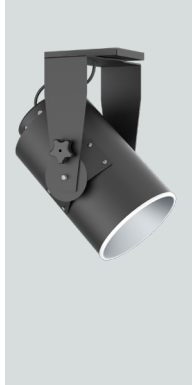


### STANDARD FINISHES

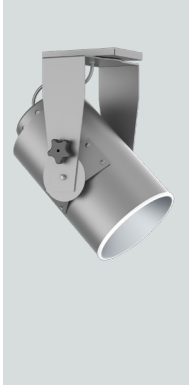
**MW**  
MATTE WHITE



**MB**  
MATTE BLACK

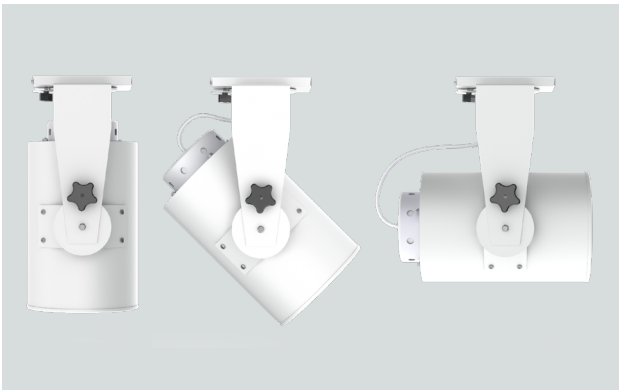


**PT**  
PLATINUM SILVER

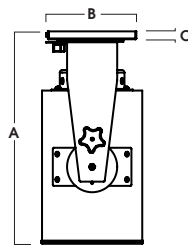


### MOUNTING TYPES

**YK**  
YOKE MOUNT

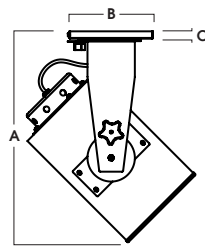


0° POSITION



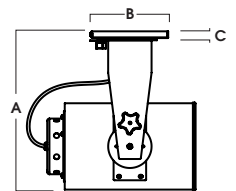
A	B	C
16.0	7.1	.62
406.4 mm	180.3 mm	15.8 mm

45° POSITION



A	B	C
17.8	7.1	.62
452.1 mm	180.3 mm	15.8 mm

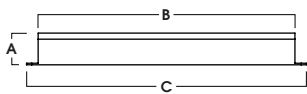
90° TILT



A	B	C
14.7	7.1	.62
373.4 mm	180.3 mm	15.8 mm

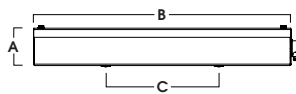
### EMERGENCY BATTERY OPTIONS

**EMRM\*** - 7W REMOTE EMERGENCY BATTERY  
(50' MAX)



A	B	C
1.3	12.6	13.0

**EMEN\*** - 7W REMOTE EMERGENCY BATTERY  
WITH ENCLOSURE (50' MAX)



A	B	C
2.0	17.0	6.2

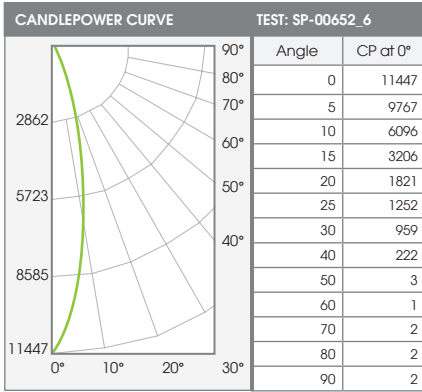
\*OTHER EM BATTERY SIZES AVAILABLE. CONSULT FACTORY

# 8" ROUND ACCENT DIRECT

## STAGE-PRO SERIES / PHOTOMETRIC DATA



### C0812YKXT-30LxxK-NDEX-TSG-NL



ZONAL LUMENS		
0-10	844	29%
0-20	1870	64%
0-30	2491	85%
0-40	2880	98%
0-60	2935	100%
0-80	2938	100%
0-90	2939	100%
Total Lumens	2939	100%

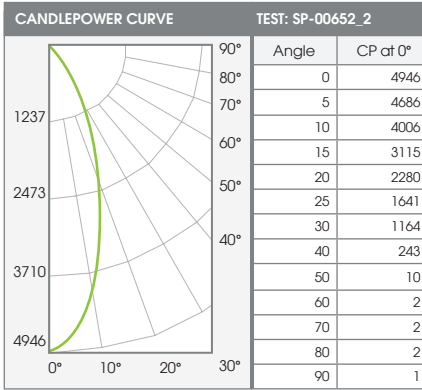
### 30L NARROW - 83 CRI

SINGLE UNIT: PERFORMANCE			
INITIAL FOOTCANDLES AND BEAM ANGLE DIAMETERS			
Mounting Height*	FC at Center	Diameter of Beam**	FC at Beam**
5.5'	378	2.1'	183
6.5'	271	2.5'	131
7.5'	204	2.8'	98
8.5'	158	3.2'	76
10.0'	114	3.8'	55
12.0'	79	4.5'	38
14.0'	58	5.3'	28
16.0'	45	6.0'	22

\* From aperture to horizontal surface below.  
\*\* At IESNA defined Beam Angle, to 50% Max. CP.

Delivered Lumens: 2939    CP @ 0° (Nadir): 11447    Spacing Ratio: 0.36  
 Luminaire Watts: 32.6    Beam Angle: 21.4°    Output Multipliers: 10L x 0.32, 13L x 0.43, 20L x 0.66  
 LER: 90    CRI: 83

### C0812YKXT-30LxxK-MDEX-TSG-NL



ZONAL LUMENS		
0-10	427	17%
0-20	1299	50%
0-30	2072	80%
0-40	2504	97%
0-60	2576	100%
0-80	2579	100%
0-90	2581	100%
Total Lumens	2581	100%

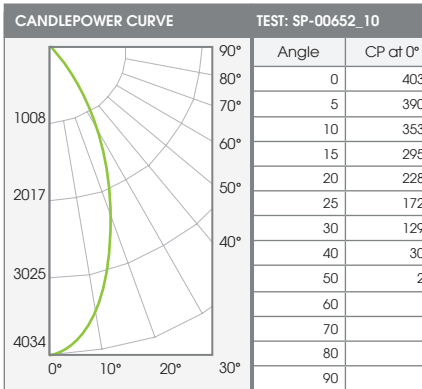
### 30L MEDIUM - 83 CRI

SINGLE UNIT: PERFORMANCE			
INITIAL FOOTCANDLES AND BEAM ANGLE DIAMETERS			
Mounting Height*	FC at Center	Diameter of Beam**	FC at Beam**
5.5'	164	3.8'	73
6.5'	117	4.4'	52
7.5'	88	5.1'	39
8.5'	68	5.8'	31
10.0'	49	6.8'	22
12.0'	34	8.2'	15
14.0'	25	9.6'	11
16.0'	19	10.9'	9

\* From aperture to horizontal surface below.  
\*\* At IESNA defined Beam Angle, to 50% Max. CP.

Delivered Lumens: 2581    CP @ 0° (Nadir): 4946    Spacing Ratio: 0.62  
 Luminaire Watts: 32.6    Beam Angle: 37.7°    Output Multipliers: 10L x 0.32, 13L x 0.43, 20L x 0.66  
 LER: 79    CRI: 83

### C0812YKXT-30LxxK-WDEX-TSG-NL



ZONAL LUMENS		
0-10	361	14%
0-20	1179	46%
0-30	1980	77%
0-40	2474	96%
0-60	2572	100%
0-80	2575	100%
0-90	2577	100%
Total Lumens	2577	100%

### 30L WIDE - 83 CRI

SINGLE UNIT: PERFORMANCE			
INITIAL FOOTCANDLES AND BEAM ANGLE DIAMETERS			
Mounting Height*	FC at Center	Diameter of Beam**	FC at Beam**
5.5'	133	4.5'	57
6.5'	95	5.4'	41
7.5'	72	6.2'	31
8.5'	56	7.0'	24
10.0'	40	8.2'	17
12.0'	28	9.9'	12
14.0'	21	11.5'	9
16.0'	16	13.2'	7

\* From aperture to horizontal surface below.  
\*\* At IESNA defined Beam Angle, to 50% Max. CP.

Delivered Lumens: 2577    CP @ 0° (Nadir): 4034    Spacing Ratio: 0.7  
 Luminaire Watts: 32.6    Beam Angle: 44.8°    Output Multipliers: 10L x 0.32, 13L x 0.43, 20L x 0.66  
 LER: 79    CRI: 83

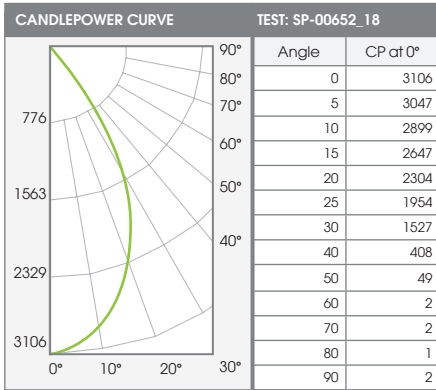
# 8" ROUND ACCENT DIRECT

STAGE-PRO SERIES / PHOTOMETRIC DATA



C0812YKXT-30LxxK-XWEX-TSG-NL

30L XTRA WIDE - 83 CRI



**ZONAL LUMENS**

0-10	286	11%
0-20	1021	38%
0-30	1915	71%
0-40	2525	94%
0-60	2679	100%
0-80	2683	100%
0-90	2685	100%
Total Lumens	2685	100%

**SINGLE UNIT: PERFORMANCE**  
INITIAL FOOTCANDLES AND BEAM ANGLE DIAMETERS

Mounting Height*	FC at Center	Diameter of Beam**	FC at Beam**
5.5'	103	6.2'	39
6.5'	74	7.4'	28
7.5'	55	8.5'	21
8.5'	43	9.6'	16
10.0'	31	11.3'	12
12.0'	22	13.6'	8
14.0'	16	15.9'	6
16.0'	12	18.1'	5

\* From aperture to horizontal surface below.  
\*\* At IESNA defined Beam Angle, to 50% Max. CP.

Delivered Lumens: 2685  
Luminaire Watts: 32.6  
LER: 82

CP @ 0° (Nadir): 3106  
Beam Angle: 59.1°  
CRI: 83

Spacing Ratio: 0.9  
Output Multipliers: 10L x 0.32, 13L x 0.43, 20L x 0.66

# COLOR OPTIONS - POWDER COAT PAINT FINISHES

NOTE: NO PRINTED IMAGE CAN EQUAL THE EXACT COLOR OF FINISH ON METAL.  
SEE INDIVIDUAL SPECIFICATION SHEETS OR CONSULT FACTORY FOR ADDITIONAL INFORMATION.



## STANDARD CORD / STEM / CANOPY FINISHES

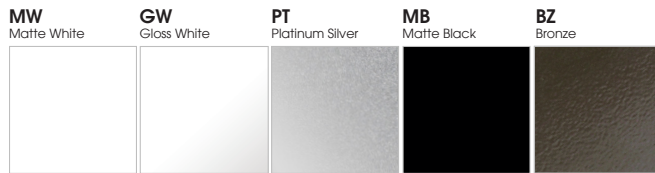
FIXTURE COLOR	STANDARD CORD COLOR	STANDARD CANOPY / STEM COLOR
Matte White, Textured White	Matte White	Matte White
Gloss White	Matte White	Gloss White
Matte Black, Textured Black	Matte Black	Matte Black
All Others	Matte Black	Same Color as Fixture
Custom Color	Contact Factory	Contact Factory

## PAINT TIMES

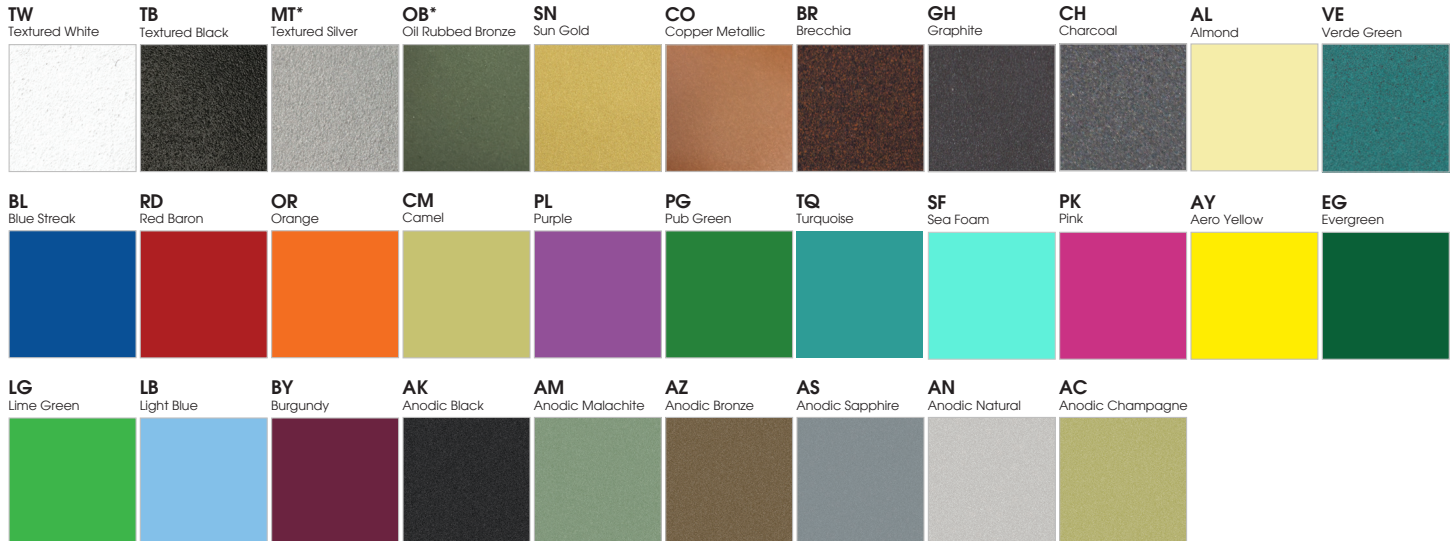
TIER	COST	AVERAGE PAINT TIME*
Tier 1 - Standard Finishes	\$	⌚
Tier 2 - Typical Finishes	\$\$	⌚⌚
Custom Color	Contact Factory	Contact Factory

\*CONTACT FACTORY FOR SPECIFIC PRODUCT LEAD TIMES

## TIER 1 - STANDARD FINISHES



## TIER 2 - TYPICAL FINISHES



## CUSTOM COLOR FINISHES

CONTACT FACTORY

**CC**  
Custom Color



\*UNAVAILABLE FOR WET LOCATION