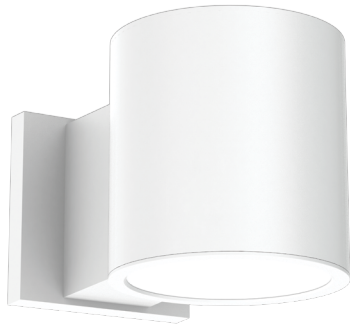




**6" ROUND DIRECT  
DAMP LOCATION  
GAMMA SERIES**

PROJECT: \_\_\_\_\_  
 QUANTITY: \_\_\_\_\_ TYPE: \_\_\_\_\_



CF0606PC



CF0612PC



CF0618PC

SERIES	LUMENS <sup>1</sup>	CCT	OPTICS	DRIVER / DIMMING <sup>2</sup>	LENS	MOUNTING <sup>3</sup>	FINISH <sup>4</sup>
<b>CF0606PC</b> 6" x 6"	<b>10L</b> 750 Lm	80 CRI	<b>ND</b> 13° <b>MD</b> 30° <b>WD</b> 53° <b>XW</b> 78°	<b>EX</b> Electronic Driver, 120V/277V <b>DO10X</b> 1%, 0-10V, 120V/277V <b>DS2W1</b> ELV/MLV, 120V	<b>NL</b> No Lens <b>CL</b> Clear Glass Lens <b>SO</b> Micro Prism Solite™ Lens <b>HL</b> Hex Louver	<b>WM</b> Wall Mount	<b>MW</b> <sup>5</sup> Matte White <b>MB</b> <sup>5</sup> Matte Black <b>PT</b> <sup>5</sup> Platinum Silver <b>CC</b> Custom Color
	<b>15L</b> 1150 Lm	<b>27K</b> 2700K					
<b>CF0612PC</b> 6" x 12"	<b>20L</b> 1550 Lm	<b>30K</b> 3000K					
	<b>30L</b> 2300 Lm	<b>35K</b> 3500K					
<b>CF0618PC</b> 6" x 18"	<b>40L</b> 3100 Lm	<b>40K</b> 4000K					
		90 CRI				EMERGENCY BATTERY OPTIONS	
		<b>27HK</b> 2700K				<b>EMRM</b> 7W Remote EM	
		<b>30HK</b> 3000K				<b>EMEN</b> 7W Remote with Enclosure	
		<b>35HK</b> 3500K					
		<b>40HK</b> 4000K					

EXAMPLE: CF0606PC15L35KNDEX/NL/WM/MW

**NOTES:**  
 1 Nominal Delivered Lumens at 3500K 2 Consult Factory for Additional Options 3 See Mounting Page for Details on Components and Finishes  
 4 Reference Color Sheet Located on Product Webpage for Full List of Available Colors 5 Standard Finishes



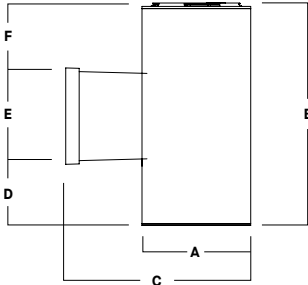


# 6" ROUND DIRECT DAMP LOCATION GAMMA SERIES

LUMENS / WATTAGE DATA			
PART NUMBER	DELIVERED LUMENS <sup>1</sup>	SYSTEM WATTS	LPW
CF0612PC 10L	732	6.5	113
CF0612PC 15L	1083	9.5	114
CF0612PC 20L	1463	12.9	113
CF0612PC 30L	2195	19.9	110
CF0612PC 40L	2926	27.4	107

<sup>1</sup> Nominal Delivered Lumens at 3500K, 80 CRI, Medium Optic with Clear Lens

## DIMENSIONS



Dimensioned with **CF0612PC**

SERIES	A	B	C	D	E	F
CF0606PC	6.1	6.4	10.3	0.4	5.4	0.6
CF0612PC	6.1	12.4	10.3	3.4	5.4	3.6
CF0618PC	6.1	18.4	10.3	6.4	5.4	6.6

## APPLICATION

The Gamma Family of Cylinders are a robust offering of point source LED luminaires featuring high efficacies, an assortment of optical control, and installation flexibility, which make them suitable for a wide range of commercial and institutional applications.

## ELECTRONICS

Solid-state light engine available in various color temperatures and lumen outputs. Specifiable in 2700K, 3000K, 3500K, 4000K in CRI 80 (Typ.), or 2700K, 3000K, 3500K, 4000K in CRI 90 (Typ.), color accuracy  $\leq 3$  SDCM. Selection of integral electronic constant current, dimmable drivers available, power factor  $> 0.9$  (Typ). Driver and light engine are field serviceable for future replacement or upgrades. Emergency battery options provide 7W for 90 minutes.

## CONSTRUCTION

Seamless cylinder body machined from 6063 extruded aluminum. Trim and top cap are die-cast aluminum. Twist and lock trim design for no visible fasteners. Passive aluminum heatsink optimized for LED life and performance. Specular reflectors offered in variety of beam spreads. Lens accessory options available (maximum of 2).

## MOUNTING

Mounting bracket for direct installation with 4" octagonal junction boxes. Single-piece, seamless die-cast aluminum wall arm. See mounting page for additional information. Contact factory for special installation circumstances.

## FINISH

Multi-stage polyester powder-coat process applied on our in-house finishing department. Custom colors also available (contact factory with RAL#). Wall arm will match cylinder finish specification.

## CODE COMPLIANCE

ETL Listed. Suitable for dry or damp locations with operation in ambient conditions up to 25°C. 5 year limited warranty on all components. Proudly designed and manufactured in Massachusetts, USA.

## SERIES SIZES

CF0606PC



CF0612PC



CF0618PC



## STANDARD FINISHES SHOWN WITH CF0612PC

MW  
Matte White



MB  
Matte Black

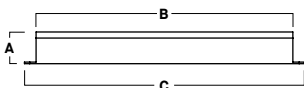


PT  
Platinum Silver



## EMERGENCY BATTERY OPTIONS

EMRM\* - 7W REMOTE EMERGENCY BATTERY  
(50' MAX)



A	B	C
1.3	12.6	13.0

EMEN\* - 7W REMOTE EMERGENCY BATTERY  
WITH ENCLOSURE (50' MAX)



A	B	C
2.0	17.0	6.2

\*OTHER EM BATTERY SIZES AVAILABLE, CONSULT FACTORY





# 6" ROUND DIRECT

## GAMMA SERIES / PHOTOMETRIC DATA

CF06XXPC 40L 35K ND XX CL XX

CANDLEPOWER CURVE TEST SP-01041	INTENSITY CANDELA 0° AZIMUTH	ZONAL LUMENS	SINGLE UNIT: PERFORMANCE DIRECT FOOTCANDLES BASED ON DOWNLIGHT ONLY				MULTIPLE UNITS: PERFORMANCE 80/50/20% REFLECTANCES INITIAL FOOTCANDLES AND WATTS PER SQUARE FOOT						
			Mounting Height AFF	FC at Center on Floor	Beam Diameter	FC at Beam Edge	Ceiling Height	Fixture Spacing	RCR 4		RCR 6		
	0°	0° - 10° 866 29%	8'	263 fc	1.9'	129 fc	22'	4'	169	1.73	139	1.59	
	0°	0° - 20° 16841 48%	10'	168 fc	2.4'	82 fc	26'	5'	112	1.15	92	1.05	
	5°	0° - 30° 11572 67%	12'	117 fc	2.8'	57 fc	30'	6'	79	0.82	66	0.75	
	15°	0° - 40° 1784 88%	14'	86 fc	3.3'	42 fc	Delivered Illuminance Rating: (DIR) 97 FC per W/Sq. Ft. 87 FC per W/Sq. Ft.						
	25°	0° - 60° 1162 100%	16'	66 fc	3.8'	32 fc	2' Suspension Length to luminous aperture Square rooms used for multiple units: RCR 4: Length & Width = Ceiling Ht. - 4.5' x 2.50 RCR 6: Length & Width = Ceiling Ht. - 4.5' x 1.66						
	35°	0° - 80° 997 100%	20'	42 fc	4.7'	21 fc	* Average Footcandles at 2.5' Above Floor						
	45°	0° - 90° 330 100%	24'	29 fc	5.7'	14 fc	** Exceeds Spacing Ratio by 1%						
	55°	0° - 90° 5 100%	28'	21 fc	6.6'	11 fc	*** Exceeds Spacing Ratio by 2%						
	90°	0° - 90° 0 100%	Total	2941	100%								

Delivered Lumens: 2941  
Luminaire Watts: 27.4  
LER: 107.34

CP at 0° (Nadir): 16841  
CRI: 80

Beam Angle: 13°  
Spacing Ratio: 0.23

Lumen Multiplier: 10L x 0.25, 15L x 0.37, 20L x 0.50, 30L x 0.75  
CCT Multiplier: 27K x 0.97, 30K x 0.98, 40K x 1.04  
27HK x 0.78, 30HK x 0.82

See Page 1 for System Watts for all outputs

CF06XXPC 40L 35K MD XX CL XX

CANDLEPOWER CURVE TEST SP-01038	INTENSITY CANDELA 0° AZIMUTH	ZONAL LUMENS	SINGLE UNIT: PERFORMANCE DIRECT FOOTCANDLES BASED ON DOWNLIGHT ONLY				MULTIPLE UNITS: PERFORMANCE 80/50/20% REFLECTANCES INITIAL FOOTCANDLES AND WATTS PER SQUARE FOOT						
			Mounting Height AFF	FC at Center on Floor	Beam Diameter	FC at Beam Edge	Ceiling Height	Fixture Spacing	RCR 3		RCR 5		
	0°	0° - 10° 478 16%	8'	89 fc	4.4'	40 fc	18'	6'	67	0.66	53	0.60	
	0°	0° - 20° 1281 44%	10'	57 fc	5.5'	26 fc	22'	8'	40	0.40	32	0.36	
	5°	0° - 30° 5293 66%	12'	39 fc	6.6'	18 fc	26'	10'	26	0.26	21	0.24	
	15°	0° - 40° 2574 88%	14'	29 fc	7.7'	13 fc	Delivered Illuminance Rating: (DIR) 101 FC per W/Sq. Ft. 89 FC per W/Sq. Ft.						
	25°	0° - 60° 1335 100%	16'	22 fc	8.8'	10 fc	2' Suspension Length to luminous aperture Square rooms used for multiple units: RCR 3: Length & Width = Ceiling Ht. - 4.5' x 3.33 RCR 5: Length & Width = Ceiling Ht. - 4.5' x 2.00						
	35°	0° - 80° 1019 100%	20'	14 fc	11.0'	6 fc	* Average Footcandles at 2.5' Above Floor						
	45°	0° - 90° 297 100%	24'	10 fc	13.2'	4 fc							
	55°	0° - 90° 10 100%	28'	7 fc	15.3'	3 fc							
	90°	0° - 90° 0 100%	Total	2926	100%								

Delivered Lumens: 2926  
Luminaire Watts: 27.4  
LER: 106.79

CP at 0° (Nadir): 1281  
CRI: 80

Beam Angle: 30°  
Spacing Ratio: 0.50

Lumen Multiplier: 10L x 0.25, 15L x 0.37, 20L x 0.50, 30L x 0.75  
27K x 0.97, 30K x 0.98, 40K x 1.04, 27HK x 0.78, 30HK x 0.82

See Page 1 for System Watts for all outputs

CF06XXPC 40L 35K WD XX CL XX

CANDLEPOWER CURVE TEST SP-01287_M-40L	INTENSITY CANDELA 0° AZIMUTH	ZONAL LUMENS	SINGLE UNIT: PERFORMANCE DIRECT FOOTCANDLES BASED ON DOWNLIGHT ONLY				MULTIPLE UNITS: PERFORMANCE 80/50/20% REFLECTANCES INITIAL FOOTCANDLES AND WATTS PER SQUARE FOOT						
			Mounting Height AFF	FC at Center on Floor	Beam Diameter	FC at Beam Edge	Ceiling Height	Fixture Spacing	RCR 2		RCR 4		
	0°	0° - 10° 316 11%	8'	54 fc	7.9'	20 fc	14'	6'	83	0.77	72	0.77	
	0°	0° - 20° 1071 37%	10'	34 fc	9.9'	13 fc	18'	8'	41	0.38	36	0.38	
	5°	0° - 30° 3326 66%	12'	24 fc	11.9'	9 fc	22'	10'	31	0.29	21	0.23	
	15°	0° - 40° 2624 89%	14'	18 fc	13.9'	7 fc	Delivered Illuminance Rating: (DIR) 108 FC per W/Sq. Ft. 94 FC per W/Sq. Ft.						
	25°	0° - 60° 1732 99%	16'	13 fc	15.8'	5 fc	2' Suspension Length to luminous aperture Square rooms used for multiple units: RCR 2: Length & Width = Ceiling Ht. - 4.5' x 5.00 RCR 4: Length & Width = Ceiling Ht. - 4.5' x 2.50						
	35°	0° - 80° 1039 99%	20'	9 fc	19.8'	3 fc	* Average Footcandles at 2.5' Above Floor						
	45°	0° - 90° 225 100%	24'	6 fc	23.8'	2 fc							
	55°	0° - 90° 21 100%	28'	4 fc	27.7'	2 fc							
	90°	0° - 90° 2 100%	Total	2913	100%								

Delivered Lumens: 2913  
Luminaire Watts: 27  
LER: 107.89

CP at 0° (Nadir): 3445  
CRI: 80

Beam Angle: 53°  
Spacing Ratio: 0.76

Lumen Multiplier: 10L x 0.25, 15L x 0.36, 20L x 0.50, 30L x 0.75  
CCT Multiplier: 27K x 0.97, 30K x 0.98, 40K x 1.04  
27HK x 0.78, 30HK x 0.83

See Page 1 for System Watts for all outputs





# 6" ROUND DIRECT

## GAMMA SERIES / PHOTOMETRIC DATA

CF06XXPC 40L 35K XW XX CL XX

CANDLEPOWER CURVE TEST SP-01044	INTENSITY CANDELA 0° AZIMUTH	ZONAL LUMENS		SINGLE UNIT: PERFORMANCE DIRECT FOOTCANDLES BASED ON DOWNLIGHT ONLY			MULTIPLE UNITS: PERFORMANCE 80/50/20% REFLECTANCES INITIAL FOOTCANDLES AND WATTS PER SQUARE FOOT								
		0° - 10°	206	7%	Mounting Height AFF	FC at Center on Floor	Beam Diameter	FC at Beam Edge	Ceiling Height	Fixture Spacing	RCR 1		RCR 3		
	0°	2153	0° - 20°	785	27%	6'	60 fc	9.7'	14 fc	14'	8'	50	0.44	42	0.44
	5°	2124	0° - 30°	1642	57%	8'	34 fc	12.9'	8 fc	18'	10'	29	0.25	21	0.22
	15°	2030	0° - 40°	2490	86%	10'	22 fc	16.1'	5 fc	22'	12'	20	0.18	20	0.20
	25°	1863	0° - 60°	2856	98%	12'	15 fc	19.3'	4 fc	Delivered Illuminance Rating: (DIR)		113 FC per W/Sq. Ft.		97 FC per W/Sq. Ft.	
	35°	1406	0° - 80°	2904	100%	14'	11 fc	22.5'	3 fc	2' Suspension Length to luminous aperture Square rooms used for multiple units: RCR 1: Length & Width = Ceiling Ht. - 4.5' x 10.00 RCR 3: Length & Width = Ceiling Ht. - 4.5' x 3.33 * Average Footcandles at 2.5' Above Floor					
	45°	401	0° - 90°	2906	100%	16'	8 fc	25.7'	2 fc						
	55°	26	Total	2907	100%	20'	5 fc	32.2'	1 fc						
	90°	0				24'	4 fc	38.6'	1 fc						

Delivered Lumens: **2907**  
Luminaire Watts: **27.4**  
LER: **106.09**

CP at 0° (Nadir): **2153**  
CRI: **80**

Beam Angle: **78°**  
Spacing Ratio: **1.17**

Lumen Multiplier: 10L x 0.25, 15L x 0.37, 20L x 0.50, 30L x 0.75  
CCT Multiplier: 27K x 0.97, 30K x 0.98, 40K x 1.04  
27HK x 0.78, 30HK x 0.82

See Page 1 for System Watts for all outputs

