



COMMERCIAL DOWNLIGHT SERIES BY SPECTRUM

5" ROUND DOWNLIGHT

NON-IC CONSTRUCTION

Spectrum's Infinium 5" recessed round downlight series features a shallow plenum housing for general illumination.

LUMENS AND WATTAGE CHART			
PART NUMBER	DELIVERED LUMENS ¹	SYSTEM WATTS	LPW
SGE5LEDFX10L	742	6.6	112
SGE5LEDFX15L	1195	10.5	114
SGE5LEDFX20L	1608	14.4	112
SGE5LEDFX30L	2391	21.9	109
SGE5LEDFX40L	3215	30	107
SGE5LEDFX50L	4122	38.6	107

¹ Nominal Delivered Lumens at 35K with MW SO

PROJECT: _____
 QUANTITY: _____ TYPE: _____



MATTE WHITE
MATCHING FLANGE



MATTE BLACK
MATCHING FLANGE



SEMI-DIFFUSE
MATCHING FLANGE



PLATINUM SILVER
MATCHING FLANGE

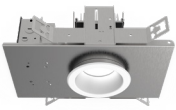


BRONZE
MATCHING FLANGE

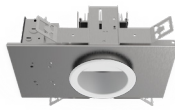


AVAILABLE HOUSING TYPE

SGE5LEDFX - Downlight



SGW5LEDFX - Wall Wash



PRODUCT SELECTOR GUIDE

SERIES	LUMENS	CRI / CCT	DRIVER / VOLTAGE	EMERGENCY	BAR HANGERS	TRIM TYPE	FINISH	FLANGE FINISH	LENS	TRIM OPTIONS
SGE5LEDFX						AR5223FX				
EXAMPLE	15L	35K	DX		BH27	AR5223FX	MW	MF	SO	

FIXTURE HOUSING SPECIFICATION

SERIES	LUMENS	CRI / CCT	DRIVER / VOLTAGE	EMERGENCY	BAR HANGERS
Downlight	10L 750 Lm 15L 1200 Lm 20L 1600 Lm 30L 2400 Lm 40L 3200 Lm 50L 4100 Lm	90 Minimum 27HK 2700K 30HK 3000K 35HK 3500K 40HK 4000K	DX 1%, 0-10V, 120V/277V DS2W1 1%, ELV/TRIAC, 120V	EM Integral Emergency Battery EMRM Remote Emergency Battery Pack Installer Responsible For EM Access	BH27 27" Solid Bars Standard Bar Hangers H12 12" - 24" Expandable Bars CB24 24" C-Channel Bars
Wall Wash	SGW5LEDFX Nominal Delivered Lumens at 35K with MW SO	80 Minimum 30K 3000K 35K 3500K 40K 4000K 50K 5000K			

- Up to 4100 delivered lumens.
- Smooth light distribution for general illumination.
- Shallow plenum construction.
- L70 at >60,000 Hours at 70% lumens maintenance.
- 5 year warranty on fixture and electronics.
- Sustainable fixture.
- Damp or wet location listed.
- Ease of maintenance.
- Post-lock trim retention torsion springs.

TRIM SPECIFICATION

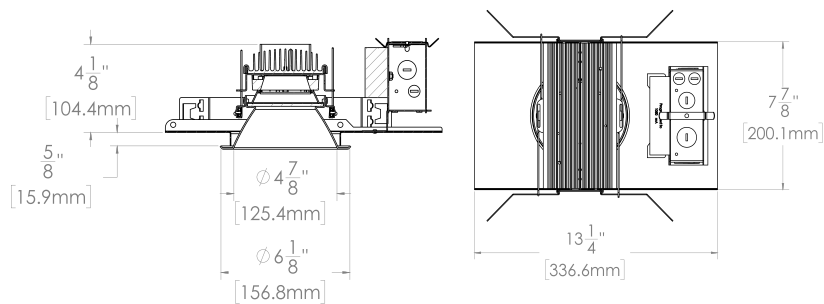
TRIM TYPE	FINISH	FLANGE FINISH	LENS	TRIM OPTIONS
Downlight	MW Matte White MB Matte Black SG Semi-Diffuse PT Platinum Silver CC Custom Color Consult Factory	MF Matching Flange Wall Wash Not Available with Tier 4 Finishes NON MATCHING WF White Flange BF Black Flange SF Platinum Flange CCF Custom Color Flange Consult Factory	STANDARD LENS FOR DOWNLIGHT SO Micro Prism Solite™ Lens	W Wet Location Gasket is Supplied with "W" Option GS Gasket
Wall Wash	See Color Guide for Full Range of Color Options	See Color Guide for Full Range of Color Options	STANDARD LENS FOR WALL WASH SK Skytex™ Lens	



HOUSING DIMENSIONS

- NEW CONSTRUCTION

Non-IC rated, thermally protected frame-in kit for new construction.



TRIM DATA

AR5223FX - DOWNLIGHT



AR5923FX - WALL WASH



FEATURES

APPLICATIONS

FX series 5" diameter downlights, designed for general downlighting with smooth light distribution.

FEATURES

Shallow plenum construction. Companion retrofit and remodel fixtures available. Auto dim thermal protector for long term reliability. Zhaga international standard LED module for ease of maintenance and future replacement. Tool-less LED module, driver, and J-Box access. Multi-Bar mounting brackets, fit a variety of mounting bars. Posi-lock trim retention torsion springs. Integral 5/8" (.625) collar, works in ceiling up to 1" Deep. Intended for Non-IC new construction.

FINISH

Variety of powdercoat and anodized finishes available. Matte white flange is standard.

ELECTRONICS

LED system features high efficacy Philips LEDs. Standard CRI is >80. Drivers are overload and short circuit protected as well as thermally regulated. Sound rating A.

CONSTRUCTION

Housing/frame constructed of #20 ga. galvanized steel to resist corrosion. Self-flanged one piece trim spun from 0.063 3002 high purity aluminum and finished to specification. Passive machined aluminum heatsink.

CODE COMPLIANCE

BAA Compliant. Non-IC New Construction only. ETL certified to meet US and Canadian standards. Suitable for dry or damp locations. Optional Wet location listed trim. LM79/LM80 data available. Manufactured and tested to UL standards No. 1598.

RATED LIFE

Rated for 60,000 Hours at 70% lumen maintenance. (L70)



PHOTOMETRIC DATA - 5" ROUND DOWNLIGHT

SGE5LEDFX 50L 35K XX AR5223FX MW WF SO

CANDLEPOWER CURVE TEST SP-01243	INTENSITY CANDELA 0° AZIMUTH	ZONAL LUMENS	SINGLE UNIT: PERFORMANCE DIRECT FOOTCANDLES BASED ON DOWNLIGHT ONLY				MULTIPLE UNITS: PERFORMANCE 80/50/20% REFLECTANCES INITIAL FOOTCANDLES AND WATTS PER SQUARE FOOT					
			Mounting Height AFF	FC at Center on Floor	Beam Diameter	FC at Beam Edge	Ceiling Height	Fixture Spacing	RCR 2		RCR 4	
	0°	0° - 10° 305 7%	6'	89 fc	7.8'	26 fc	10'	6'	102	0.99	86	0.99
	0° 3188	0° - 20° 1135 28%	8'	50 fc	10.5'	15 fc	12'	8'	63	0.62	53	0.62
	5° 3177	0° - 30° 2217 54%	10'	32 fc	13.1'	9 fc	16'	10'	43	0.41	26	0.30
	15° 2973	0° - 40° 3091 75%	12'	22 fc	15.7'	6 fc	Delivered Illuminance Rating: (DIR)					
	25° 2394	0° - 60° 3858 94%	14'	16 fc	18.3'	5 fc	103 FC per W/Sq. Ft. 87 FC per W/Sq. Ft.					
	35° 1405	0° - 80° 4090 99%	16'	12 fc	20.9'	4 fc	Recessed mounting Square rooms used for multiple units: RCR 2: Length & Width = Ceiling Ht. - 2.5' x 5.00 RCR 4: Length & Width = Ceiling Ht. - 2.5' x 2.50 * Average Footcandles at 2.5' Above Floor					
	45° 605	0° - 90° 4109 100%	20'	8 fc	26.1'	2 fc						
	55° 311	90° 3	24'	6 fc	31.4'	2 fc						
	90° 3	Total 4122 100%										

Delivered Lumens: 4122
Luminaire Watts: 38.58
LER: 106.84

CP at 0° (Nadir): 3188
CRI: 80+

Beam Angle: 66°
Spacing Ratio: 1.00

Lumen Multiplier: 10L x 0.18, 15L x 0.29, 20L x 0.39, 30L x 0.58, 40L x 0.78
CCT Multiplier: 27HK x 0.77, 30K x 0.96, 40K x 1.03, 50K x 1.04

See Page 1 for System Watts for all outputs

SGE5LEDFX 50L 35K XX AR5223FX SG WF SO

CANDLEPOWER CURVE TEST SP-01243_1	INTENSITY CANDELA 0° AZIMUTH	ZONAL LUMENS	SINGLE UNIT: PERFORMANCE DIRECT FOOTCANDLES BASED ON DOWNLIGHT ONLY				MULTIPLE UNITS: PERFORMANCE 80/50/20% REFLECTANCES INITIAL FOOTCANDLES AND WATTS PER SQUARE FOOT					
			Mounting Height AFF	FC at Center on Floor	Beam Diameter	FC at Beam Edge	Ceiling Height	Fixture Spacing	RCR 2		RCR 4	
	0°	0° - 10° 337 9%	6'	98 fc	6.8'	33 fc	10'	6'	92	0.99	79	0.99
	0° 3537	0° - 20° 1219 34%	8'	55 fc	9.1'	18 fc	12'	8'	57	0.61	49	0.61
	5° 3523	0° - 30° 2262 63%	10'	35 fc	11.3'	12 fc	16'	10'	39	0.41	24	0.30
	15° 3176	0° - 40° 3017 83%	12'	25 fc	13.6'	8 fc	Delivered Illuminance Rating: (DIR)					
	25° 2243	0° - 60° 3533 98%	14'	18 fc	15.8'	6 fc	93 FC per W/Sq. Ft. 80 FC per W/Sq. Ft.					
	35° 1118	0° - 80° 3592 99%	16'	14 fc	18.1'	5 fc	Recessed mounting Square rooms used for multiple units: RCR 2: Length & Width = Ceiling Ht. - 2.5' x 5.00 RCR 4: Length & Width = Ceiling Ht. - 2.5' x 2.50 * Average Footcandles at 2.5' Above Floor					
	45° 403	0° - 90° 3601 100%	20'	9 fc	22.6'	3 fc						
	55° 144	90° 2	24'	6 fc	27.2'	2 fc						
	90° 2	Total 3619 100%										

Delivered Lumens: 3619
Luminaire Watts: 38.5
LER: 94.00

CP at 0° (Nadir): 3537
CRI: 80+

Beam Angle: 58°
Spacing Ratio: 0.89

Lumen Multiplier: 10L x 0.18, 15L x 0.29, 20L x 0.39, 30L x 0.58, 40L x 0.78
CCT Multiplier: 27HK x 0.77, 30K x 0.96, 40K x 1.03, 50K x 1.04

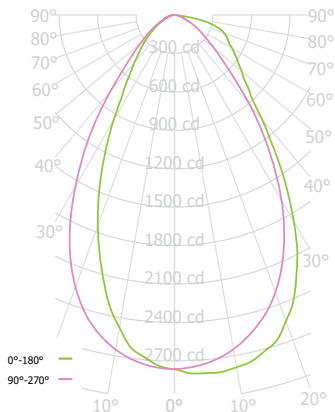
See Page 1 for System Watts for all outputs



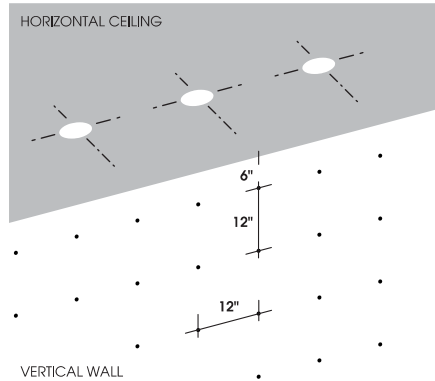
PHOTOMETRIC DATA - 5" ROUND WALL WASH

SGW5LEDX 50L 35K XX AR5923FX MW WF SK

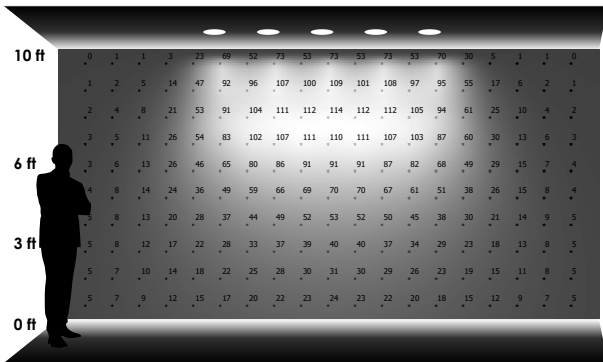
CANDLEPOWER CURVE TEST SP-01234	PERFORMANCE SUMMARY	REFERENCE DIAGRAM
------------------------------------	---------------------	-------------------



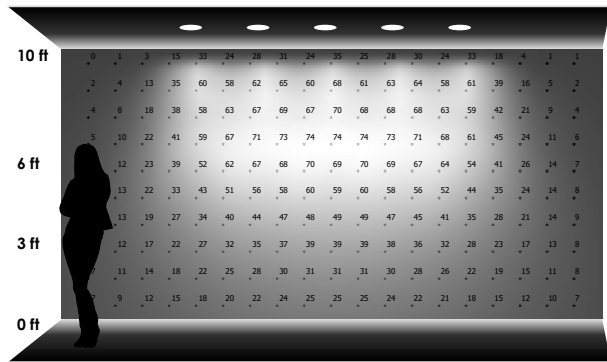
Delivered Lumens: 3544
 Luminaire Watts: 38.3
 LER: 92.53
 CP at 0deg (Nadir): 2764
 CRI: 80+
 Lumen Multiplier: 10L x 0.18, 15L x 0.29, 20L x 0.39, 30L x 0.58, 40L x 0.78
 CCT Multiplier: 27HK x 0.77, 30K x 0.96, 40K x 1.03, 50K x 1.04



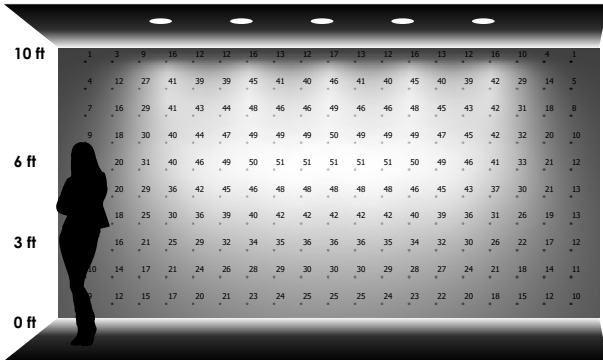
PERFORMANCE DATA - INITIAL ILLUMINATION (FOOTCANDLES) ON WALL - DIRECT LIGHT ONLY



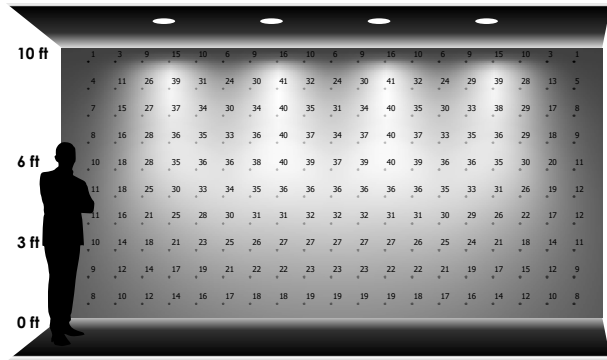
5 LUMINAIRES
 2'-0" away from wall
 2'-0" between luminaires



5 LUMINAIRES
 2'-6" away from wall
 2'-6" between luminaires



5 LUMINAIRES
 3'-0" away from wall
 3'-0" between luminaires



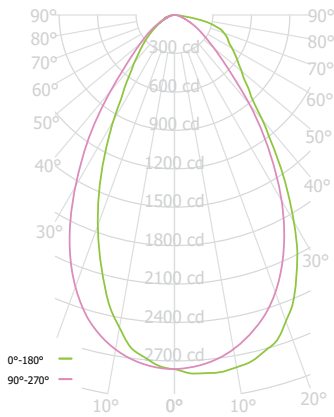
4 LUMINAIRES
 3'-0" away from wall
 4'-0" between luminaires



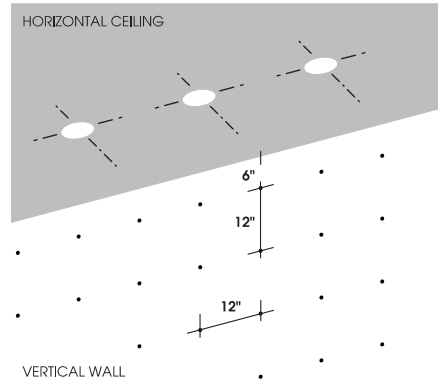
PHOTOMETRIC DATA - 5" ROUND WALL WASH

SGW5LEDFX 50L 35K XX AR5923FX MW WF SK

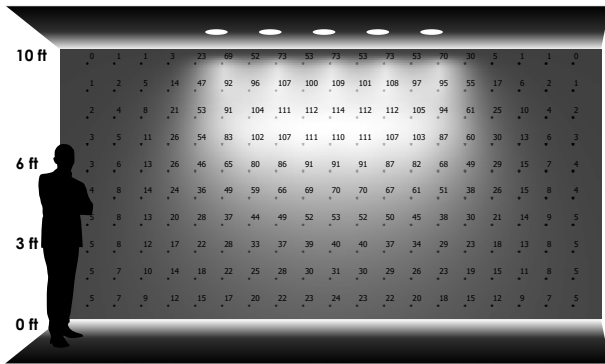
CANDLEPOWER CURVE TEST SP-01234	PERFORMANCE SUMMARY	REFERENCE DIAGRAM
------------------------------------	---------------------	-------------------



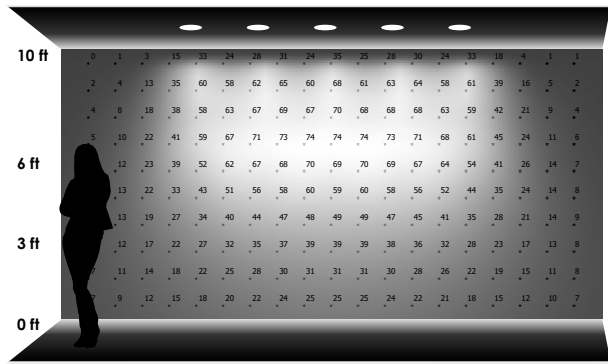
Delivered Lumens: 3544
 Luminaire Watts: 38.3
 LER: 92.53
 CP at 0deg (Nadir): 2764
 CRI: 80+
 Lumen Multiplier: 10L x 0.18, 15L x 0.29, 20L x 0.39, 30L x 0.58, 40L x 0.78
 CCT Multiplier: 27HK x 0.77, 30K x 0.96, 40K x 1.03, 50K x 1.04



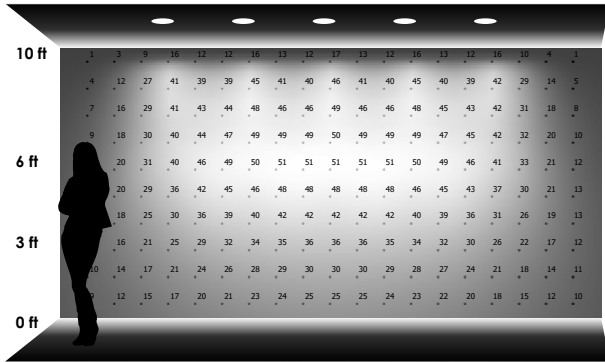
PERFORMANCE DATA - INITIAL ILLUMINATION (FOOTCANDLES) ON WALL - DIRECT LIGHT ONLY



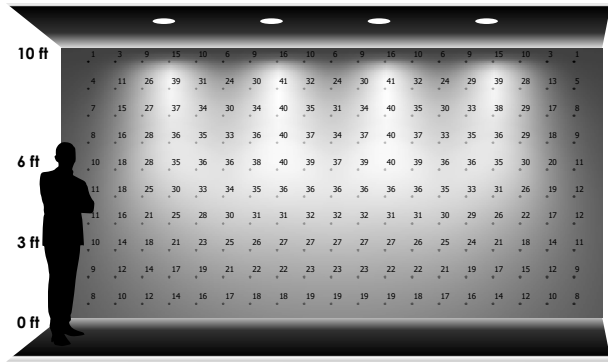
5 LUMINAIRES
 2'-0" away from wall
 2'-0" between luminaires



5 LUMINAIRES
 2'-6" away from wall
 2'-6" between luminaires



5 LUMINAIRES
 3'-0" away from wall
 3'-0" between luminaires



4 LUMINAIRES
 3'-0" away from wall
 4'-0" between luminaires

