

TWH4FX

4" WALL WASH TRACKLIGHT

Powertrack Series LED tracklight for wall wash floodlighting, display lighting, high ceiling, and vertical illumination.

LUMENS / WATTAGE DATA

PART NUMBER	SOURCE LUMENS ¹	DELIVERED LUMENS ²	SYSTEM WATTS	LPW/LER
TWH4FX 20L	2000	1753	16	110
TWH4FX 30L	3000	2602	23	113
TWH4FX 40L	4000	3445	31	111
TWH4FX 50L	5000	4296	38	113
TWH4FX 60L	6000	5201	45.8	114
TWH4FX 70L	7000	6051	53.2	114

¹Nominal Source Lumens at 35K ²Nominal Delivered Lumens at 35K xx MW

FEATURES

Side mounted driver housing accepts all Spectrac dimming and control options. Fixture rotates 359° and tilts up to 120°. Passive cooled Zhaga compliant LED module for future maintenance or upgrade.

FINISH

Multi-stage polyester powder-coat process applied on our dedicated paint lines. A wide variety of standard and custom finishes are available.

ELECTRONICS

LED system features high efficacy PHILIPS LEDs. Standard CRI is >80. 90CRI and Additional CCT's available, contact factory. Drivers are overload and short circuit protected as well as thermally regulated.

CONSTRUCTION

Die-cast and extruded aluminum construction.

CODE COMPLIANCE

BAA compliant. ETL certified to meet US and Canadian standards. Suitable for dry or damp locations. Manufactured and tested to UL Standards No. 1574.

PROJECT: _____

QUANTITY: _____

TYPE: _____



PRODUCT SELECTOR GUIDE

SERIES	LUMENS ¹	CCT	DRIVER / VOLTAGE	ADAPTOR / MOUNTING	LENSING	FINISH
TWH4FX						

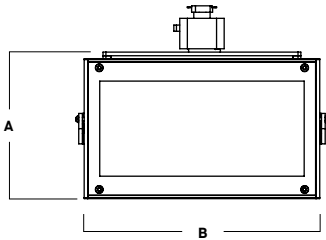
EXAMPLE

TWH4FX	30L	35K	E1	TEK100	PG	MW
---------------	-----	-----	----	--------	----	----

SERIES	LUMENS ¹	CCT	DRIVER / VOLTAGE	ADAPTOR / MOUNTING	LENSING	FINISH	
TWH4FX	20L	1753 Lm	30K 3000K 35K 3500K 40K 4000K	DS2W1 E1	BET GES66 TEK100	PG Prismatic Glass	MW Matte White MB Matte Black PT Platinum Silver CC Custom Color
	30L	2602 Lm					
	40L	3445 Lm		Global TEK 2 CIR/2 NEUT 120V			
	50L	4296 Lm		TP3 Global XTSC 3 CIR/1 NEUT 120V, 0-10V Dimmable			
	60L	5201 Lm			HTEK100 Global TEK 2 CIR/2 NEUT 277V		
	70L	6051 Lm		E2 Non-Dimming Electronic Driver, 277V			
¹ Nominal Delivered Lumens at 35K xx MW		DO101 1%, 0-10V Dimming, 120V	DO102 1%, 0-10V Dimming, 277V				



DIMENSIONS



A	B
4.8 121.9 mm	7.7 195.6 mm

FINISH

MW
Matte White



PT
Platinum Silver



MB
Matte Black



BZ
Bronze



CC
Custom Color



PAINT TIMES

TIER	COST	AVERAGE PAINT TIME*
Tier 1 - Standard Finishes	\$	
Custom Color	Contact Factory	Contact Factory

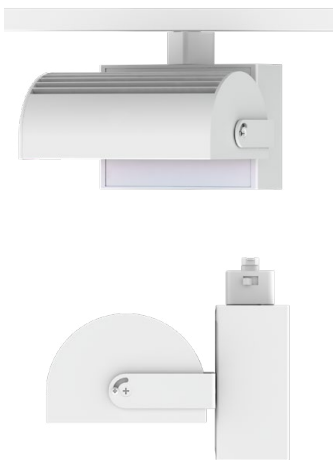
*CONTACT FACTORY FOR SPECIFIC PRODUCT LEAD TIMES

STANDARD CORD / STEM / CANOPY FINISHES / TRACK ADAPTER

FIXTURE COLOR	STANDARD CORD COLOR / TRACK ADAPTER
Matte White	Matte White
Matte Black	Matte Black
All Others	Matte Black
Custom Color	Contact Factory

MOUNTING TYPES

0° TILT



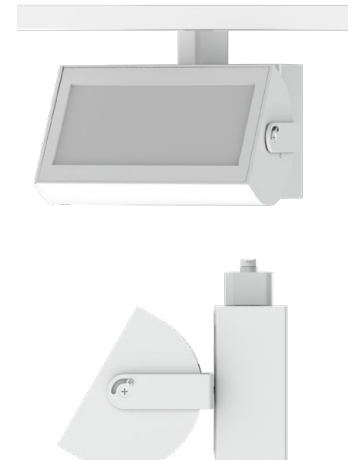
45° TILT



90° POSITION



120° TILT



ADAPTOR

BET

Basix 1 CIR/1 NEUT 120V



GES66

Global GES 1 CIR/1 NEUT 120V



TEK100

Global TEK 2 CIR/2 NEUT 120V



TP3

Global XTSC 3 CIR/1 NEUT 120V,
0-10V Dimmable



HTEK100

Global TEK 2 CIR/2 NEUT 277V



TWD

EUTRAC 2 CIR/2 NEUT 277V,
0-10V Dimmable



TWH4FX 70L 35K xx MW

CANDLEPOWER CURVE TEST SP-01254	INTENSITY CANDELA 0° AZIMUTH	ZONAL LUMENS	SINGLE UNIT: PERFORMANCE DIRECT FOOTCANDLES BASED ON DOWNLIGHT ONLY				MULTIPLE UNITS: PERFORMANCE 80/50/20% REFLECTANCES INITIAL FOOTCANDLES AND WATTS PER SQUARE FOOT									
			Mounting Height AFF	FC at Center on Floor	Beam Diameter	FC at Beam Edge	Ceiling Height	Fixture Spacing	RCR 2		RCR 4					
	0°	3580	0° - 10°	341	6%	8'	56 fc	12.4'	13 fc	14'	10'	51	0.48	60	0.69	
	0°	3580	0° - 30°	2559	42%	10'	36 fc	15.4'	8 fc	18'	12'	39	0.36	32	0.36	
	20°	3170	0° - 60°	5365	89%	12'	25 fc	18.5'	6 fc	22'	16'	24	0.22	19	0.22	
	40°	1706	90° - 120°	6	0%	14'	18 fc	21.6'	4 fc	Delivered Illuminance Rating: (DIR)		106 FC per W/Sq. Ft.		87 FC per W/Sq. Ft.		
	60°	542	90° - 150°	10	0%	16'	14 fc	24.7'	3 fc	1' Suspension Length to luminous aperture Square rooms used for multiple units: RCR 2: Length & Width = Ceiling Ht. - 3.5' x 5.00 RCR 4: Length & Width = Ceiling Ht. - 3.5' x 2.50 * Average Footcandles at 2.5' Above Floor						
	80°	125	0° - 90°	6038	100%	20'	9 fc	30.9'	2 fc							
	90°	6	90° - 180°	12	0%	24'	6 fc	37.1'	1 fc							
	100°	1	Total	6051	100%	28'	5 fc	43.3'	1 fc							
	120°	2														
	140°	3														
	160°	3														
	180°	3														

Delivered Lumens: **6051**
 Luminaire Watts: **53.2**
 LER: **113.74**

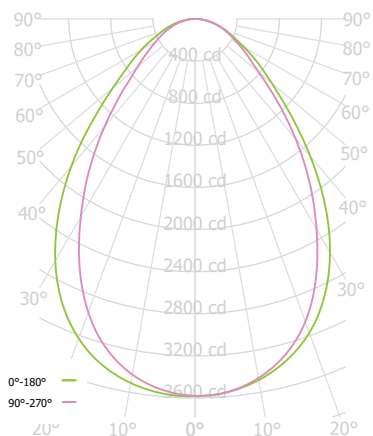
CP at 0° (Nadir): **3580**
 CRI: **80+**

Beam Angle: **79°**
 Spacing Ratio: **1.09**

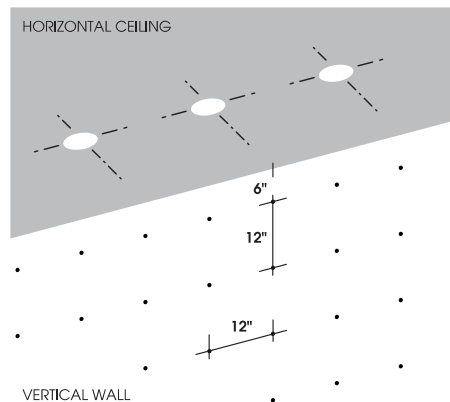
Lumen Multiplier: 20L x 0.29, 30L x 0.43, 40L x 0.57, 50L x 0.71, 60L x 0.86
 CCT Multiplier: 30K x 1.0, 40K x 1.08

TWH4FX 70L 35K xx MW

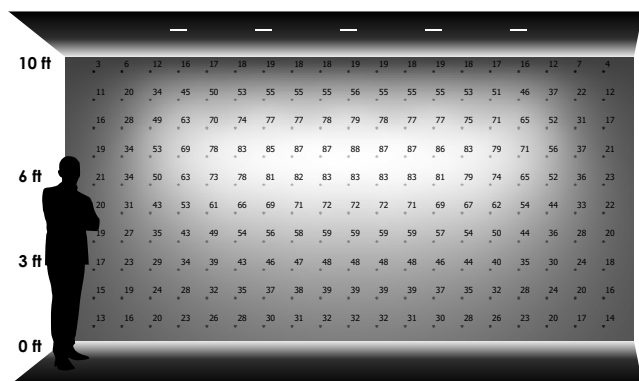
CANDLEPOWER CURVE TEST SP-01254	PERFORMANCE SUMMARY	REFERENCE DIAGRAM
------------------------------------	---------------------	-------------------



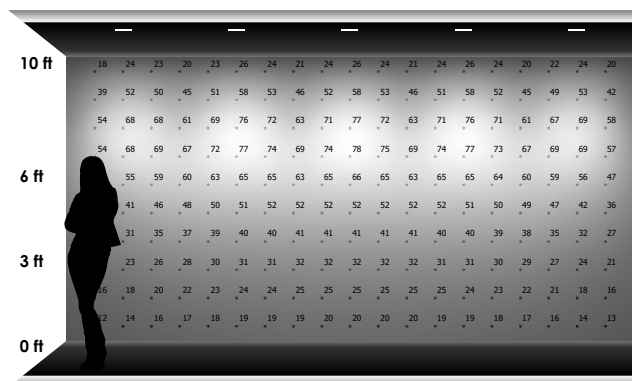
Delivered Lumens: 6051
 Luminaire Watts: 53.2
 LER: 113.74
 CP at 0deg (Nadir): 3580
 CRI: 80+
 Lumen Multiplier: 20L x 0.29, 30L x 0.43, 40L x 0.57, 50L x 0.71, 60L x 0.86
 CCT Multiplier: 30K x 1.0, 40K x 1.08



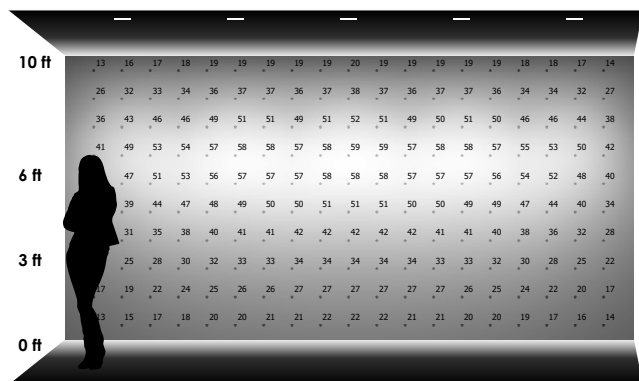
PERFORMANCE DATA - INITIAL ILLUMINATION (FOOTCANDLES) ON WALL - DIRECT LIGHT ONLY



5 LUMINAIRES
 3' - 0" away from wall
 3' - 0" between luminaires



5 LUMINAIRES
 3' - 0" away from wall
 4' - 0" between luminaires
 5° tilt towards wall



5 LUMINAIRES
 4' - 0" away from wall
 4' - 0" between luminaires
 8° tilt towards wall



3 LUMINAIRES
 5' - 0" away from wall
 5' - 0" between luminaires
 10° tilt towards wall

COLOR OPTIONS - POWDER COAT PAINT FINISHES

NOTE: NO PRINTED IMAGE CAN EQUAL THE EXACT COLOR OF FINISH ON METAL.
SEE INDIVIDUAL SPECIFICATION SHEETS OR CONSULT FACTORY FOR ADDITIONAL INFORMATION.



STANDARD CORD / STEM / CANOPY FINISHES / TRACK ADAPTER

FIXTURE COLOR	STANDARD CORD COLOR / TRACK ADAPTER	STANDARD CANOPY / STEM COLOR
Matte White	Matte White	Matte White
Matte Black	Matte Black	Matte Black
All Others	Matte Black	Same Color as Fixture
Custom Color	Contact Factory	Contact Factory

PAINT TIMES

TIER	COST	AVERAGE PAINT TIME*
Tier 1 - Standard Finishes	\$	🕒
Custom Color	Contact Factory	Contact Factory

*CONTACT FACTORY FOR SPECIFIC PRODUCT LEAD TIMES

TIER 1 - STANDARD FINISHES



CUSTOM COLOR FINISHES

CONTACT FACTORY

CC
Custom Color

