



# 3" ROUND SUPER SHALLOW 1300 LUMENS MAX

## UNIVERSAL HOUSINGS WITH INTERCHANGEABLE TRIMS

Spectrum's A Spec 3" recessed round downlight series features a super shallow plenum housing and variety of trims for accent and general illumination.

LUMENS AND WATTAGE CHART					
PART NUMBER	LUMENS	SOURCE LUMENS <sup>1</sup>	DELIVERED LUMENS <sup>2</sup>	SYSTEM WATTS	LPW
RDSS3F	XT10L 70D	1000	807	11.1	73
RDSS3F	XT13L 70D	1000	765	11.1	69
RDSS3F	XT10L 90D	1000	806	11.1	73
RDSS3F	XT13L 90D	1300	1089	15.0	73

PROJECT: \_\_\_\_\_

TYPE: \_\_\_\_\_



Lensed

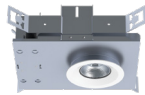


Open

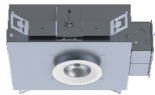


### AVAILABLE HOUSING TYPES

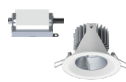
SR3SMO - New Construction / 13L Max



SR3SMI - IC New Construction / 13L Max



SR3SMR - Remodel Construction / 13L Max



### FIXTURE HOUSING SPECIFICATION

SERIES		LUMENS <sup>1</sup>		DRIVER / DIMMING / VOLTAGE			OPTIONS		
SR3SMO	New Construction	XT10L	1000 Lm	E	Electronic Driver	1	120V	H12	12" - 24" Expandable Bars
SR3SMI	IC New Construction	XT13L	1300 Lm	DS10	10%, 0-10V	2	277V	H06	6" - 12" Expandable Bars
SR3SMR	Remodel Construction			DO10	1%, 0-10V			BH27	27" Solid Bars
				DS2W1	ELV/MLV, 120V			CB24	24" C-Channel Bars
				DLTE1	1% Lutron® 2-Wire Forward Phase, 120V			CH24	24" Chicago Bars
				DL3E	1% Lutron® EcoSystem® Fade			FS	Fusing
				EL10	1%, eldoLED			EM <sup>3</sup>	Integral Emergency Battery
				ED01	0.1%, eldoLED			EMRM	Remote Emergency Battery Pack
				BLU	Bluetooth LE			EB	Black Housing
								PR2 <sup>2</sup>	2" Thick Ceiling Adaptor

- Die-cast aluminum trim with a wide variety of options.
- Super Shallow plenum housing.
- Performance Xicato LED module for superior reliability and color consistency.
- Large selection of dimming and control options.
- Interchangeable optics and lenses.
- See SR3 for shallow plenum and SR3D for 1" deep regress trim.
- 5 year warranty on fixture and electronics.
- 10 year warranty on LED CCT.
- Bluetooth LE option.
- Sustainable fixture.
- Zhaga International Standard LED Module for future upgrades.
- 83CRI 2SDCM, 98CRI 1x2SDCM best in industry.

### AVAILABLE TRIM / MODULE TYPES



### TRIM / MODULE SPECIFICATION

TRIM		CCT		OPTICS		FINISH <sup>5</sup>		OPTIONS							
RDSS3F	Downlight	83 CRI		70D	72°	MW <sup>6</sup>	Matte White	NL	No Lens						
		27K	2700K							90D	87°	MB	Matte Black	SO <sup>8</sup>	Solite™ Micro Prism Lens
		30K	3000K									PT	Platinum Silver	GL	Clear Glass Lens
		35K	3500K									BZ	Bronze	FG	Frosted Glass Lens
40K	4000K	CH	Charcoal	WL	Wet Location										
		98 CRI ARTIST				OB	Oil Rubbed Bronze	PR2 <sup>2</sup>	2" Thick Ceiling Adaptor						
		27HK	2700K			AS	Sapphire	WF <sup>9</sup>	White Flange						
		30HK	3000K			AM	Malachite								
		35HK	3500K			SN	Sun Gold								
		40HK	4000K			CO	Copper Metallic								
						GH	Graphite								
						CC <sup>7</sup>	Custom Color								

EXAMPLE: SR3SMOXT10LDS2W1/H12/RDSS3F27K70DMWSO

NOTES:  
 1 Nominal Source Lumens at Any CCT 2 Nominal Delivered Lumens 83 CRI at Any CCT with MW-SO Trim 3 Not Available with IC 4 Contact Factory 5 Inside Trim And Flange Will Match Color Specified 6 Standard Finish  
 7 Contact Factory for Special Finishes 8 Standard Lens to Achieve Listed Beam Angle 9 Otherwise Flange Is Same Color As Interior Of Trim



LIGHTSOURCE BY XICATO®



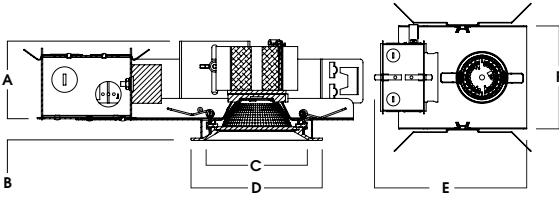
Dimensions and values shown are nominal. Spectrum Lighting continually works to improve products and reserves the right to make changes which may alter the performance or appearance of products.



## HOUSING DIMENSIONS

### SR3SMO - NEW CONSTRUCTION / 13L MAX

Non-IC rated, thermally protected frame-in kit for new construction. Non-IC designation requires insulation must be minimum of 3" from housing.



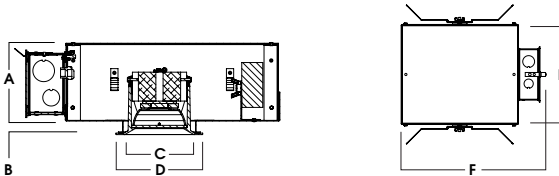
A	B	C	D	E	F
2.7	0.6	3.63	4.5	10.8	7.6
68.6 mm	15.2 mm	92.2 mm	114.3 mm	274.3 mm	193.0 mm

Fixture Weight: 4.0 lbs

Ceiling Cutout: Ø 4"

### SR3SMI - IC NEW CONSTRUCTION / 13L MAX

IC rated frame-in kit for new construction with direct insulation contact and CCEA (Chicago Plenum) compatibility.



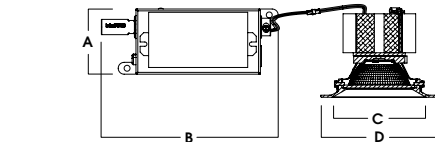
A	B	C	D	E	F
4.0	.625	3.63	4.5	9.5	13.2
101.6 mm	15.9 mm	92.2 mm	114.3 mm	241.3 mm	335.3 mm

Fixture Weight: 4.0 lbs

Ceiling Cutout: Ø 4"

### SR3SMR - REMODEL CONSTRUCTION / 13L MAX

Non-IC rated frame-in kit for existing construction. Non-IC designation requires insulation must be minimum of 3" from housing.



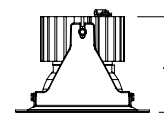
A	B	C	D
2.8	7.5	3.63	4.5
71.1 mm	190.5 mm	92.2 mm	114.3 mm

Fixture Weight: 2.0 lbs

Ceiling Cutout: Ø 3 3/4"

## TRIM / MODULE DATA

### RDSS3F - DOWNLIGHT MODULE



Lm	A
XT10L	3.5
XT13L	3.5

## FEATURES

### FRAME-IN KIT

Precision Die-formed 20 gauge galvanized steel housing and integral junction box with (3) 5/8", (3) 7/8" and (2) 1 1/8" knockouts. Junction box capacity: 8 12AWG rated for 90 °C. Tool-less driver and junction box access for ease of maintenance. Post-loc trim retention springs for 5/8"-1" ceiling thickness. Use PR2 for up to 2" thick ceiling. For thicker ceilings consult factory.

### MOUNTING

A variety of mounting bars are available (excluding remodel). Ceiling materials must be rigid to support luminaire frame.

### DRIVER

Several constant current dimming drivers are available. Power factor >.9 typical, 50/60Hz, 350-1050mA.

### TRIM

Self-flanged, one-piece, die-cast aluminum finished in a variety of powdercoat options. Inside trim and flange are finished in same color unless otherwise specified (WF= White Flange). For trimless options see N-Line.

### REMODEL

Features tethered power supply and junction box with sheathed wire.

### LUMEN OUTPUT

72° and 87° optics with 1300 Lumens max.

### LED

Zhaga compatible high performance Xicato module. Proprietary phosphor technology provides consistent and stable color with CCT control of +/- 100K over life of light engine.

### EMERGENCY

Integral or remote 7W emergency battery options are available. Operates for 90 minutes and produces nominal 450 lumens.

### BLUETOOTH

Integral Bluetooth LE option is available for dimming to .1%, grouping, remote access, electrical feedback and beacon technology.

### FUSING

Integral optional fast blow fuse with fuse holder.

### COLOR VARIATION

Standard CRI (83) within 2-step MacAdam Ellipse. High CRI (98) within 1x2-step MacAdam Ellipse.

### LISTINGS

ETL Certified to meet US and Canadian Standards. Manufactured and tested to UL standard No. 1598/8750. BAA compliant. Wet location (WL), City of Chicago Environmental Air (CCEA), and Insulated Ceiling (IC) options available.

### WARRANTY

Fixtures, LEDs and drivers carry 5 year Spectrum warranty, as well as individual OEM warranty. Warranty is 5 years from date of manufacturing. LED system rated for operation in an ambient temperatures up to 25 °C.



# PHOTOMETRIC DATA - 3" ROUND SUPER SHALLOW

SR3SM-XT-13L-E1-RDSS3F-xxK-70D-MW-SO

CANDLEPOWER CURVE TEST SP-00492_18_M-XT13L	INTENSITY CANDELA 0° AZIMUTH	ZONAL LUMENS	SINGLE UNIT: PERFORMANCE DIRECT FOOTCANDLES BASED ON DOWNLIGHT ONLY	MULTIPLE UNITS: PERFORMANCE 80/50/20% REFLECTANCES INITIAL FOOTCANDLES AND WATTS PER SQUARE FOOT
	0°	0° - 10° 80 7%	Mounting Height AFF	Ceiling Height
	0° 707	0° - 20° 268 25%	FC at Center on Floor	Fixture Spacing
	5° 714	0° - 30° 501 46%	Beam Diameter	RCR 2
	15° 679	0° - 40° 734 68%	FC at Beam Edge	FC + W/Sq. Ft.
	25° 511	0° - 60° 1037 96%		RCR 4
	35° 370	0° - 80° 1089 101%		FC + W/Sq. Ft.
	45° 256	0° - 90° 1080 100%		
	55° 120	Total 1080 100%		
	90° 0			

Delivered Lumens: 1091  
Luminaire Watts: 15  
LER: 72.73

CP at 0° (Nadir): 707  
CRI: 83

Beam Angle: 71°  
Spacing Ratio: 0.99

Lumen Multiplier: 10L x 0.74  
CCT Multiplier: LEDXT lumen output is the same for all available CCT's

SR3SM-XT-13L-E1-RDSS3F-xxK-90D-MW-SO

CANDLEPOWER CURVE TEST SP-00492_9-M-XT13L	INTENSITY CANDELA 0° AZIMUTH	ZONAL LUMENS	SINGLE UNIT: PERFORMANCE DIRECT FOOTCANDLES BASED ON DOWNLIGHT ONLY	MULTIPLE UNITS: PERFORMANCE 80/50/20% REFLECTANCES INITIAL FOOTCANDLES AND WATTS PER SQUARE FOOT
	0°	0° - 10° 59 6%	Mounting Height AFF	Ceiling Height
	0° 511	0° - 20° 212 20%	FC at Center on Floor	Fixture Spacing
	5° 491	0° - 30° 440 41%	Beam Diameter	RCR 2
	15° 548	0° - 40° 710 66%	FC at Beam Edge	FC + W/Sq. Ft.
	25° 507	0° - 60° 1031 95%		RCR 4
	35° 444	0° - 80° 1087 100%		FC + W/Sq. Ft.
	45° 287	0° - 90° 1078 100%		
	55° 110	Total 1078 100%		
	90° 0			

Delivered Lumens: 1089  
Luminaire Watts: 15  
LER: 72.60

CP at 0° (Nadir): 511  
CRI: 83

Beam Angle: 91°  
Spacing Ratio: 1.35

Lumen Multiplier: 10L x 0.74  
CCT Multiplier: LEDXT lumen output is the same for all available CCT's

