



4" ROUND DEEP DOWNLIGHT N-LINE 4000 LUMENS MAX

UNIVERSAL HOUSINGS WITH INTERCHANGEABLE TRIMS

Spectrum's A Spec 4" recessed round downlight series features a 2" regressed trim and variety of options for accent and general illumination.

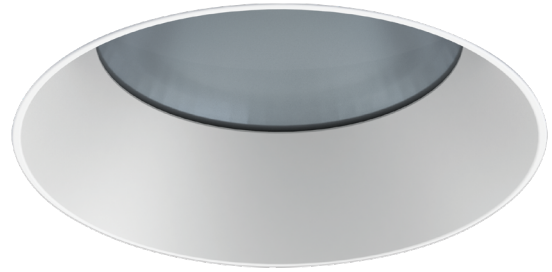
LUMENS AND WATTAGE CHART					
PART NUMBER	LUMENS	SOURCE LUMENS ¹	DELIVERED LUMENS ²	SYSTEM WATTS	LPW
RDD4N	XT10L	1000	743	11.1	67
RDD4N	XT13L	1300	1002	15.0	67
RDD4N	XT20L	2000	1541	23.7	65
RDD4N	XT30L	3000	2311	34.6	67
RDD4N	XT40L	4000	2966	39.9	74

PROJECT: _____

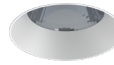
QUANTITY: _____ TYPE: _____



Lensed



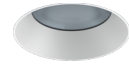
Open



Adjustable

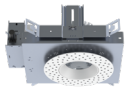


Wall Wash

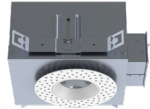


AVAILABLE HOUSING TYPES

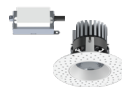
SR4NMO - New Construction / 40L Max



SR4NMI - IC New Construction / 20L Max



SR4NMR - Remodel Construction / 40L Max



Shown with N-Line Plaster Fitter

FIXTURE HOUSING SPECIFICATION

SERIES		LUMENS ¹		DRIVER / DIMMING / VOLTAGE		OPTIONS	
SR4NMO	New Construction	XT10L	1000 Lm	E_	Electronic Driver	1	120V
SR4NMI³	IC New Construction	XT13L	1300 Lm	DS10_	10%, 0-10V	2	277V
SR4NMR	Remodel Construction	XT20L	2000 Lm	DO10_	1%, 0-10V		
		XT30L	3000 Lm	DS2W1	ELV/MLV, 120V		
		XT40L	4000 Lm	DLTE1	1% Lutron® 2-Wire Forward Phase, 120V		
		XN BEAM		DL3E_	1%, Lutron® EcoSystem® Fade		
		XN10L	1000 Lm	EL10_	1%, eldoLED		
		XN13L	1300 Lm	ED01_	0.1%, eldoLED		
				DMXS_4/8	DMX Standard Configuration		
				DMXC_4/8	DMX Non-Standard Custom		
				BLU	Bluetooth LE		
				AWN	Athena Wireless Node (RF Module Only)		
						H12⁵	12" - 24" Expandable Bars
						H06	6" - 12" Expandable Bars
						BH27	27" Solid Bars
						CB24	24" C-Channel Bars
						CH24	24" Chicago Bars
						EM⁷	Integral Emergency Battery
						EMRM	Remote Emergency Battery Pack
						EB	Black Housing
						PR2⁶	2" Thick Ceiling Adaptor

- Die-cast aluminum trim with a wide variety of options.
- Deep regressed trim.
- Universal housing accepts all trim types, including F-Line self-flange.
- Performance Xicato LED module for superior reliability and color consistency.
- Large selection of dimming and control options.
- Interchangeable optics and lenses.
- 5 year warranty on fixture and electronics.
- 10 year warranty on LED CCT.
- Bluetooth LE option.
- Sustainable fixture.
- Zhaga International Standard LED Module for future upgrades.
- 83CRI 2SDCM, 98CRI 1x2SDCM best in industry.

AVAILABLE TRIM / MODULE TYPES



TRIM / MODULE SPECIFICATION

TRIM		CCT		OPTICS		FINISH		OPTIONS	
RDD4N	Downlight	83 CRI		XN²	9°	MW¹²	Matte White	NL	No Lens
RDA4N³	30° Adjustable	27K	2700K	ND	17°	MB	Matte Black	SO¹⁵	Micro Prism Solite™ Lens
RDW4N¹⁰	Wall Wash	30K	3000K	MD	28°	PT	Platinum Silver	LW¹⁶	Wall Wash Spread Lens
		35K	3500K	WD	41°	BZ	Bronze	GL	Clear Glass Lens
		40K	4000K	XW	62°	CH	Charcoal	FG	Frosted Glass Lens
		98 CRI ARTIST ¹¹				OB	Oil Rubbed Bronze	PR2⁶	2" Thick Ceiling Adaptor
		27HK	2700K			AS	Sapphire	WL	Wet Location
		30HK	3000K			AM	Malachite		
		35HK	3500K			SN	Sun Gold		
		40HK	4000K			CO	Copper Metallic		
						GH	Graphite		
						CC¹⁴	Custom Color		

EXAMPLE: SR4NMOXT10LDS2W1/H12EM/RDW4N27KXWCHNL

NOTES:

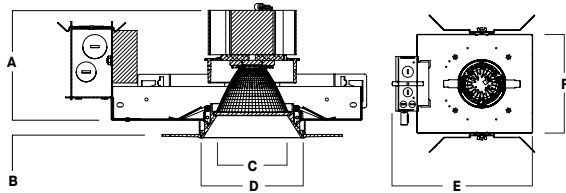
1 Nominal Source Lumens at Any CCT 2 Nominal Delivered Lumens 83 CRI at Any CCT with WD-MW-NL Trim 3 20L Max 4 Contact Factory 5 Not Available with IC 6 Standard Bar Hangers 7 Not Available in IC 8 Contact Factory 9 30L Max/No HK CCT 10 XW Optic Only / LW Lens Only 11 30L Max 12 9mm, 13L Max, All XN Draw More Watts Than Other Optics; See Photometry 13 Standard Finish 14 Contact Factory for Special Finishes 15 Standard Lens 16 Standard Lens for Wall Wash



HOUSING DIMENSIONS

SR4NMO - NEW CONSTRUCTION / 40L MAX

Non-IC rated, thermally protected frame-in kit for new construction. Non-IC designation requires insulation must be minimum of 3" from housing.



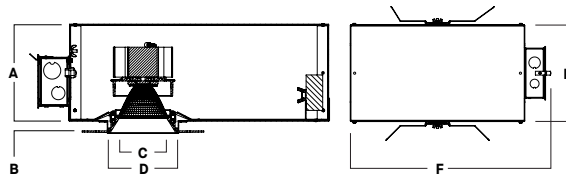
A	B	C	D	E	F
4.8	.625	3.1	4.5	13.2	9.5
121.9 mm	15.2 mm	78.7 mm	114.3 mm	335.3 mm	241.3 mm

Fixture Weight: 7 lbs

Ceiling Cutout: Ø 5"

SR4NMI - IC NEW CONSTRUCTION / 20L MAX

IC rated frame-in kit for new construction with direct insulation contact and CCEA (Chicago Plenum) compatibility.



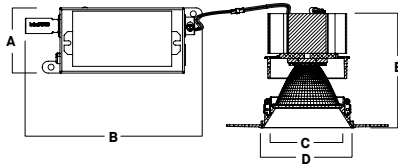
A	B	C	D	E	F
6.4	.625	3.1	4.5	9.5	10L-13L: 13.2
162.6 mm	15.9 mm	78.7 mm	114.3 mm	241.3 mm	20L: 19.2

Fixture Weight: 9 lbs

Ceiling Cutout: Ø 5"

SR4NMR - REMODEL CONSTRUCTION / 40L MAX

Non-IC rated frame-in kit for existing construction. Non-IC designation requires insulation must be minimum of 3" from housing.



A	B	C	D	E
2.8	7.5	3.1	4.5	5.7
71.1 mm	190.5 mm	78.7 mm	114.3 mm	144.8 mm

Fixture Weight: 5 lbs

Ceiling Cutout: Ø 5"

FEATURES

FRAME-IN KIT

Precision Die-formed 20 gauge galvanized steel housing and integral junction box with (3) 5/8", (3) 7/8" and (2) 1 1/8" knockouts. Junction box capacity: 8 12AWG rated for 90 °C. Tool-less driver and junction box access for ease of maintenance. Posi-loc trim retention springs for 5/8"-1" ceiling thickness. Use PR2 for up to 2" thick ceiling. For thicker ceilings consult factory.

MOUNTING

A variety of mounting bars are available (excluding remodel). Ceiling materials must be rigid to support luminaire frame.

DRIVER

Several constant current dimming drivers are available. Power factor >.9 typical, 50/60Hz, 350-1050mA.

TRIM

Flangeless, one-piece, die-cast aluminum finished in a variety of powdercoat options.

REMODEL

Features tethered power supply and junction box with sheathed wire.

LUMEN OUTPUT

XN narrow optic restricted to 1300 lumens max. All other optics and kelvins maintain 1000-4000 lumens range.

LED

Zhaga compatible high performance Xicato module. Proprietary phosphor technology provides consistent and stable color with CCT control of +/- 100K over life of light engine.

EMERGENCY

Integral or remote 7W emergency battery options are available. Operates for 90 minutes and produces nominal 450 lumens.

DMX

See [DMX Connections and Settings Guide](#) for default configurations. Contact quotes@speclight.com or your local representative for custom solutions.

BLUETOOTH

Integral Bluetooth LE option is available for dimming to .1% grouping, remote access, electrical feedback and beacon technology.

FUSING

Integral optional fast blow fuse with fuse holder.

COLOR VARIATION

Standard CRI (83) within 2-step MacAdam Ellipse. High CRI (98) within 1x2-step MacAdam Ellipse.

LISTINGS

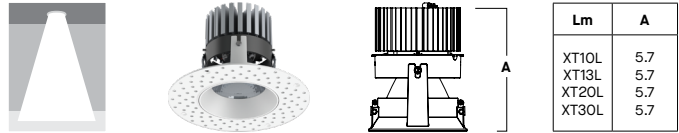
ETL Certified to meet US and Canadian Standards. Manufactured and tested to UL standard No. 1598/8750. BAA compliant. Wet location (WL), City of Chicago Environmental Air (CCEA), and Insulated Ceiling (IC) options available.

WARRANTY

Fixtures, LEDs and drivers carry 5 year Spectrum warranty, as well as individual OEM warranty. Warranty is 5 years from date of manufacturing. LED system rated for operation in an ambient temperatures up to 25 °C.

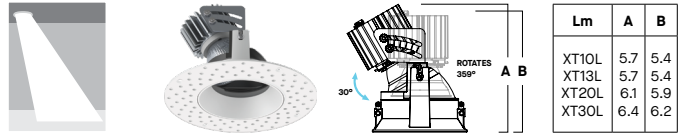
TRIM / MODULE DATA

RDD4N - DOWNLIGHT MODULE



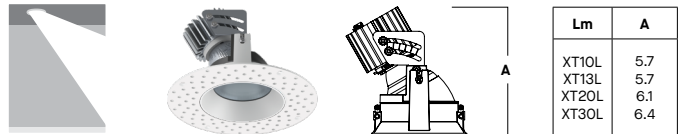
Lm	A
XT10L	5.7
XT13L	5.7
XT20L	5.7
XT30L	5.7

RDA4N - 30° ADJUSTABLE MODULE



Lm	A	B
XT10L	5.7	5.4
XT13L	5.7	5.4
XT20L	6.1	5.9
XT30L	6.4	6.2

RDW4N - WALL WASH MODULE

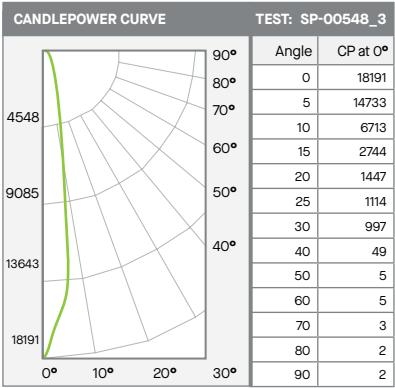


Lm	A
XT10L	5.7
XT13L	5.7
XT20L	6.1
XT30L	6.4



PHOTOMETRIC DATA - 4" ROUND DEEP N-LINE

SR4NMx-XT40L-E1-RDD4x-xxK-ND-MW-NL



Distance	Lumens	%
0-10	1172	39%
0-20	2094	70%
0-30	2635	88%
0-40	2964	99%
0-60	2980	100%
0-80	2985	100%
0-90	2987	100%
Total Lumens	2987	100%

40L NARROW - 83 CRI

Mounting Height*	FC at Center	Diameter of Beam**	FC at Beam**
5.5'	601	1.6'	294
6.5'	431	1.9'	211
7.5'	323	2.2'	158
8.5'	252	2.5'	123
10'	182	3.0'	89
12'	126	3.6'	62
14'	93	4.2'	45
16'	71	4.8'	35

Ceiling Height	Fixture Spacing	RCR 8		RCR 10	
		FC*	W/Sq. Ft.	FC*	W/Sq. Ft.
8'	2.5' **	101	1.59	74	1.25
12'	4' ***	68	1.06	66	1.11
16'	5' **	57	0.9	56	0.93

Delivered Illuminance Rating: (DIR) 63 FC per W/Sq. Ft. 59 FC per W/Sq. Ft.

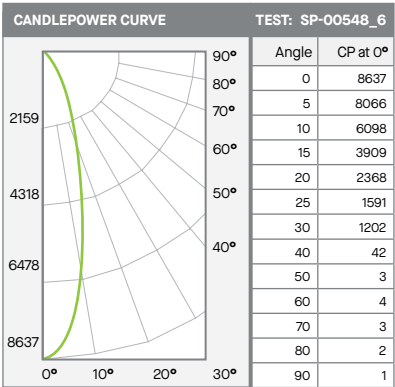
Square Rooms used for Multiple Units:
 - RCR 8: Length & Width = Ceiling Ht. x 1.25
 - RCR 10: Length & Width = Ceiling Ht. x 1.0
 * Average Footcandles at floor
 ** Exceeds spacing criteria by 4%
 *** Exceeds spacing criteria by 11%

Delivered Lumens: 2987 CP @ 0° (Nadir): 18191
 Luminaire Watts: 39.9 CRI: 83
 LER: 75

Beam Angle: 16.9°
 Spacing Ratio: 0.3

FC Multipliers: 10L x 0.322, 13L x 0.433, 20L x 0.667
 W/Sq. Ft. Multipliers: 10L x 0.320, 13L x 0.433, 20L x 0.685

SR4NMx-XT40L-E1-RDD4x-xxK-MD-MW-NL



Distance	Lumens	%
0-10	703	24%
0-20	1807	61%
0-30	2569	87%
0-40	2945	99%
0-60	2958	100%
0-80	2964	100%
0-90	2965	100%
Total Lumens	2965	100%

40L MEDIUM - 83 CRI

Mounting Height*	FC at Center	Diameter of Beam**	FC at Beam**
5.5'	286	2.7'	135
6.5'	204	3.2'	97
7.5'	154	3.6'	72
8.5'	120	4.1'	56
10'	86	4.9'	41
12'	60	5.8'	28
14'	44	6.8'	21
16'	34	7.8'	16

Ceiling Height	Fixture Spacing	RCR 4		RCR 6	
		FC*	W/Sq. Ft.	FC*	W/Sq. Ft.
8'	4' **	113	1.59	88	1.36
12'	6' **	63	0.89	58	0.9
16'	8' **	44	0.62	33	0.51

Delivered Illuminance Rating: (DIR) 71 FC per W/Sq. Ft. 64 FC per W/Sq. Ft.

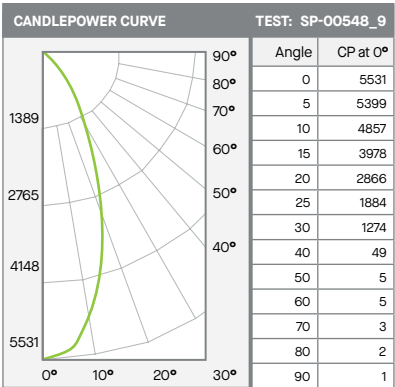
Square Rooms used for Multiple Units:
 - RCR 4: Length & Width = Ceiling Ht. x 2.5
 - RCR 6: Length & Width = Ceiling Ht. x 1.66
 * Average Footcandles at floor
 ** Exceeds spacing criteria by 6%

Delivered Lumens: 2965 CP @ 0° (Nadir): 8637
 Luminaire Watts: 39.9 CRI: 83
 LER: 74

Beam Angle: 27.3°
 Spacing Ratio: 0.48

FC Multipliers: 10L x 0.322, 13L x 0.433, 20L x 0.667
 W/Sq. Ft. Multipliers: 10L x 0.320, 13L x 0.433, 20L x 0.685

SR4NMx-XT40L-E1-RDD4x-xxK-WD-MW-NL



Distance	Lumens	%
0-10	500	17%
0-20	1599	54%
0-30	2510	85%
0-40	2937	99%
0-60	2957	100%
0-80	2964	100%
0-90	2966	100%
Total Lumens	2966	100%

40L WIDE - 83 CRI

Mounting Height*	FC at Center	Diameter of Beam**	FC at Beam**
5.5'	183	4.1'	80
6.5'	131	4.9'	57
7.5'	98	5.7'	43
8.5'	77	6.4'	34
10'	55	7.5'	24
12'	38	9.0'	17
14'	28	10.6'	12
16'	22	12.1'	9

Ceiling Height	Fixture Spacing	RCR 2		RCR 4	
		FC*	W/Sq. Ft.	FC*	W/Sq. Ft.
8'	5'	95	1.22	83	1.2
12'	7'	55	0.71	49	0.71
16'	9'	31	0.4	28	0.4

Delivered Illuminance Rating: (DIR) 77 FC per W/Sq. Ft. 69 FC per W/Sq. Ft.

Square Rooms used for Multiple Units:
 - RCR 2: Length & Width = Ceiling Ht. x 5.0
 - RCR 4: Length & Width = Ceiling Ht. x 2.5
 * Average Footcandles at floor

Delivered Lumens: 2966 CP @ 0° (Nadir): 5531
 Luminaire Watts: 39.9 CRI: 83
 LER: 74

Beam Angle: 41.3°
 Spacing Ratio: 0.68

FC Multipliers: 10L x 0.322, 13L x 0.433, 20L x 0.667
 W/Sq. Ft. Multipliers: 10L x 0.320, 13L x 0.433, 20L x 0.685

