



4" ROUND DEEP DOWNLIGHT N-LINE WILDLIFE FRIENDLY

UNIVERSAL HOUSINGS WITH INTERCHANGEABLE TRIMS

Spectrum's Enduro 4" recessed round downlight series features a trim and variety of options for accent and general illumination.

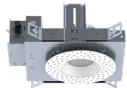
LUMENS AND WATTAGE CHART					
PART NUMBER	LUMENS	SOURCE LUMENS ¹	DELIVERED LUMENS ²	SYSTEM WATTS	LPW
RDD4N	TA5L	500	486	15.5	31
RDD4N	TD10L	1000	815	15.6	52

PROJECT: _____
 QUANTITY: _____ TYPE: _____

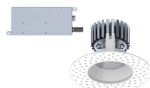


AVAILABLE HOUSING TYPES

SR4NMO - New Construction



SR4NMR - Remodel Construction



Shown with N-Line Plaster Fitter

FIXTURE HOUSING SPECIFICATION

SERIES	LUMENS ¹	DRIVER / DIMMING / VOLTAGE	OPTIONS	MOUNTING	
SR4NMO New Construction	AMBER ONLY ³ TA5L 500 Lm Amber Only	DO10_ 1%, 0-10V	1 120V 2 277V	EB Black Housing PR⁵ Consult Factory	H12⁶ 12" - 24" Expandable Bars BH27 27" Solid Bars CB24 24" C-Channel Bars
SR4NMR Remodel Construction	DUAL CIRCUIT ⁴ TD10L CIR 1 1000 Lm at 3000K CIR 2 500 Lm Amber Only	DS2W_ ELV/MLV, 120V	1 120V		

- Full Shielding.
- Die-cast aluminum trim with a wide variety of options.
- Deep regressed trim.
- Universal housing accepts all trim types, including F-Line self-flange
- 5 year warranty on fixture and electronics.
- Sustainable fixture.

AVAILABLE TRIM / MODULE TYPES

RDD4N



TRIM / MODULE SPECIFICATION

TRIM	CCT	FINISH	LENS ⁹	OPTIONS
RDD4N Downlight	AMBER ONLY ³ TA5LAMB 500 Lm Amber Only	MW⁷ Matte White MB Matte Black PT Platinum Silver BZ Bronze CH Charcoal OB Oil Rubbed Bronze AS Sapphire AM Malachite SN Sun Gold CO Copper Metallic GH Graphite CC⁸ Custom Color	SO¹⁰ Micro Prism Solite™ Lens GL Clear Glass Lens	PR⁵ Consult Factory
	DUAL CIRCUIT ⁴ TD10L30K CIR 1 1000 Lm at 3000K CIR 2 500 Lm Amber Only			

EXAMPLE: SR4NMOTA5LDS2W1/H12/RDD4NTA5LAMBCHSO

EXAMPLE: SR4NMOTD10LDS2W1/H12/RDD4NTD10L30KCHSO

NOTES:

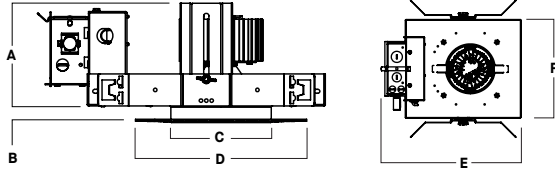
1 Nominal Source Lumens 2 Nominal Delivered Lumens 3 Specify with TA Only 4 Specify with TD Only, TD/Dual Circuit Option Requires Dedicated on Site Controls by Others, Controls by Others Are Not to Allow Both Circuits to be Energized Simultaneously, Consult Factory for More Information 5 Contact Factory 6 Standard Bar Hangers 7 Standard Finish 8 Contact Factory for Special Finishes 9 Lens is Required 10 Standard Lens



HOUSING DIMENSIONS

SR4NMO - NEW CONSTRUCTION

Non-IC rated, thermally protected frame-in kit for new construction. Non-IC designation requires insulation must be minimum of 3" from housing.



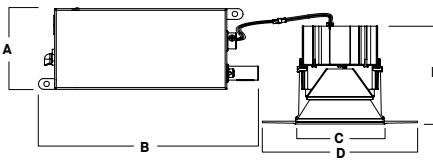
A	B	C	D	E	F
4.8	6.25	4.3	8.0	13.1	9.5
121.9 mm	15.2 mm	109.2 mm	203.2 mm	332.7 mm	241.3 mm

Fixture Weight: 7 lbs

Ceiling Cutout: Ø 5"

SR4NMR - REMODEL CONSTRUCTION

Non-IC rated frame-in kit for existing construction. Non-IC designation requires insulation must be minimum of 3" from housing.



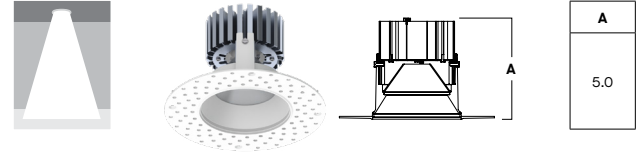
A	B	C	D	E
3.8	10.2	4.3	8.0	5.0
96.5 mm	259.1 mm	109.2 mm	203.2 mm	127.0 mm

Fixture Weight: 5 lbs

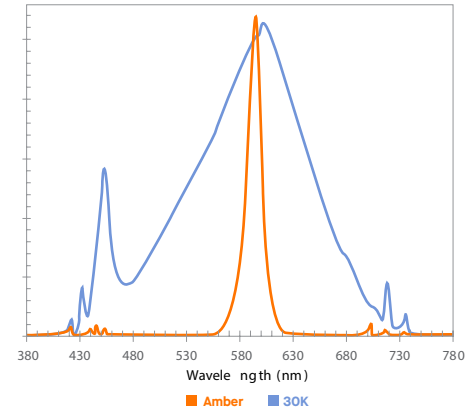
Ceiling Cutout: Ø 5"

TRIM / MODULE DATA

RDD4N - DOWNLIGHT MODULE



SPECTRAL POWER DISTRIBUTION COMPARISON



FEATURES

FRAME-IN KIT

Precision Die-formed 20 gauge galvanized steel housing and integral junction box with (3) 5/8", (3) 7/8" and (2) 1 1/8" knockouts. Junction box capacity: 8 12AWG rated for 90 °C. Tool-less driver and junction box access for ease of maintenance. Posi-loc trim retention springs for 5/8"-1" ceiling thickness.

MOUNTING

A variety of mounting bars are available (excluding remodel). Ceiling materials must be rigid to support luminaire frame.

TRIM

Flangeless, one-piece, die-cast aluminum finished in a variety of powdercoat options. Designed for wet location. Trim option for trimless plaster. For self-flange options see F-Line.

REMODEL

Features tethered power supply and junction box with sheathed wire.

ELECTRONICS

Full shielding. Single circuit, amber only option is available. Amber LEDs are monochromatic, narrow spectral bandwidth that only emit long wavelengths >560 nm and <625 nm. Proprietary 2-circuit LED system: Circuit 1 is 3000K at 1000 lumens, Circuit 2 is Amber only at 500 lumens. 3000K white light is 3-step MacAdam Ellipse binning, with 80+ CRI.

EMERGENCY

Contact Factory.

COLOR VARIATION

Standard CRI (80) within 3-step MacAdam Ellipse.

LISTINGS

ETL Certified to meet US and Canadian Standards. Manufactured and tested to UL standard No. 1598/8750. BAA compliant. Suitable for wet locations. International Dark-Sky Association approved fixture.

WARRANTY

Fixtures, LEDs and drivers carry 5 year Spectrum warranty, as well as individual OEM warranty. Warranty is 5 years from date of manufacturing. LED system rated for operation in an ambient temperatures up to 25 °C.



PHOTOMETRIC DATA - 4" ROUND DEEP DOWNLIGHT

SR4Mx TA5L xx xx RDD4x TA5LAMB xx xx SO

CANDLEPOWER CURVE TEST SP-01334	INTENSITY CANDELA 0° AZIMUTH	ZONAL LUMENS	SINGLE UNIT: PERFORMANCE HORIZONTAL FOOTCANDLES INITIAL DOWNLIGHT ONLY				MULTIPLE UNITS: PERFORMANCE 80/50/20% REFLECTANCES HORIZONTAL FOOTCANDLES AND WATTS/SQ FT						
			Mounting Distance	FC at Beam Center	Diameter at Beam Angle	FC at Beam Edge	Ceiling Height	Fixture Spacing	RCR 3		RCR 5		
	0°	0° - 10° 25 5%	5.5'	8 fc	8.4'	2 fc	9'	6'	8	0.30	8	0.37	
	0° 256	0° - 20° 97 20%	6.5'	6 fc	9.9'	2 fc							
	5° 257	0° - 30° 202 42%	7.5'	5 fc	11.4'	1 fc	12'	8'	6	0.25	4	0.17	
	15° 255	0° - 40° 296 61%	8.5'	4 fc	12.9'	1 fc							
	25° 231	0° - 60° 385 79%	10.0'	3 fc	15.2'	1 fc	16'	12'	3	0.12	2	0.09	
	35° 152	0° - 80° 446 92%	12.0'	2 fc	18.3'	0 fc							
	45° 69	0° - 90° 471 97%	14.0'	1 fc	21.3'	0 fc	Delivered Illuminance Rating: (DIR) 25 FC per W/Sq. Ft. 21 FC per W/Sq. Ft. Recessed mounting Square rooms used for multiple units: RCR 3: Length & Width = Ceiling Ht. - 2.5' x 3.33 RCR 5: Length & Width = Ceiling Ht. - 2.5' x 2.00 * Average Initial Footcandles at 2.5' Above Floor						
	55° 39	Total 486 100%	16.0'	1 fc	24.3'	0 fc							
	90° 12												

Delivered Lumens: 486
Luminaire Watts: 15.5
LER: 31.35

CP at 0° (Nadir): 256
CRI: N/A

Beam Angle: 75°
Spacing Ratio: 1.15

Lumen Multiplier: N/A
CCT Multiplier: N/A

SR4Mx TD10L xx xx RDD4x TD10L30K xx xx SO

CANDLEPOWER CURVE TEST SP-01337	INTENSITY CANDELA 0° AZIMUTH	ZONAL LUMENS	SINGLE UNIT: PERFORMANCE HORIZONTAL FOOTCANDLES INITIAL DOWNLIGHT ONLY				MULTIPLE UNITS: PERFORMANCE 80/50/20% REFLECTANCES HORIZONTAL FOOTCANDLES AND WATTS/SQ FT						
			Mounting Distance	FC at Beam Center	Diameter at Beam Angle	FC at Beam Edge	Ceiling Height	Fixture Spacing	RCR 3		RCR 5		
	0°	0° - 10° 46 6%	5.5'	16 fc	8.3'	4 fc	9'	6'	13	0.30	14	0.37	
	0° 472	0° - 20° 179 22%	6.5'	11 fc	9.8'	3 fc							
	5° 473	0° - 30° 371 46%	7.5'	8 fc	11.3'	2 fc	12'	8'	11	0.25	6	0.17	
	15° 471	0° - 40° 542 66%	8.5'	7 fc	12.8'	2 fc							
	25° 423	0° - 60° 695 85%	10.0'	5 fc	15.1'	1 fc	16'	12'	5	0.12	3	0.09	
	35° 276	0° - 80° 772 95%	12.0'	3 fc	18.1'	1 fc							
	45° 120	0° - 90° 800 98%	14.0'	2 fc	21.1'	1 fc	Delivered Illuminance Rating: (DIR) 44 FC per W/Sq. Ft. 37 FC per W/Sq. Ft. Recessed mounting Square rooms used for multiple units: RCR 3: Length & Width = Ceiling Ht. - 2.5' x 3.33 RCR 5: Length & Width = Ceiling Ht. - 2.5' x 2.00 * Average Initial Footcandles at 2.5' Above Floor						
	55° 65	Total 815 100%	16.0'	2 fc	24.1'	0 fc							
	90° 13												

Delivered Lumens: 815
Luminaire Watts: 15.5
LER: 52.58

CP at 0° (Nadir): 472
CRI: 80

Beam Angle: 74°
Spacing Ratio: 1.14

Lumen Multiplier: only 10K available
CCT Multiplier: only 30K available



PHOTOMETRIC DATA - 4" ROUND DEEP DOWNLIGHT

SR4Mx TA5L xx xx RDD4x TA5LAMB xx xx GL

CANDLEPOWER CURVE TEST SP-01332	INTENSITY CANDELA 0° AZIMUTH	ZONAL LUMENS	SINGLE UNIT: PERFORMANCE HORIZONTAL FOOTCANDLES INITIAL DOWNLIGHT ONLY				MULTIPLE UNITS: PERFORMANCE 80/50/20% REFLECTANCES HORIZONTAL FOOTCANDLES AND WATTS/SQ FT					
			Mounting Distance	FC at Beam Center	Diameter at Beam Angle	FC at Beam Edge	Ceiling Height	Fixture Spacing	RCR 3		RCR 5	
	0°	0° - 10° 24 5%	5.5'	8 fc	8.6'	2 fc	9'	6'	7	0.30	8	0.37
	0° 251	0° - 20° 96 21%	6.5'	6 fc	10.2'	1 fc	12'	8'	6	0.25	4	0.17
	5° 252	0° - 30° 205 44%	7.5'	4 fc	11.8'	1 fc	16'	12'	3	0.12	2	0.09
	15° 255	0° - 40° 305 65%	8.5'	3 fc	13.3'	1 fc	Delivered Illuminance Rating: (DIR) 25 FC per W/Sq. Ft. 21 FC per W/Sq. Ft.					
	25° 240	0° - 60° 387 83%	10.0'	3 fc	15.7'	1 fc	Recessed mounting Square rooms used for multiple units: RCR 3: Length & Width = Ceiling Ht. - 2.5' x 3.33 RCR 5: Length & Width = Ceiling Ht. - 2.5' x 2.00 * Average Initial Footcandles at 2.5' Above Floor					
	35° 162	0° - 80° 434 93%	12.0'	2 fc	18.8'	0 fc						
	45° 63	0° - 90° 454 97%	14.0'	1 fc	22.0'	0 fc						
	55° 34	Total 468 100%	16.0'	1 fc	25.1'	0 fc						
	90° 10											

Delivered Lumens: **468**
Luminaire Watts: **15.5**
LER: **30.19**

CP at 0° (Nadir): **251**
CRI: **N/A**

Beam Angle: **76°**
Spacing Ratio: **1.20**

Lumen Multiplier: **N/A**
CCT Multiplier: **N/A**

SR4Mx TD10L xx xx RDD4x TD10L30K xx xx GL

CANDLEPOWER CURVE TEST SP-01335	INTENSITY CANDELA 0° AZIMUTH	ZONAL LUMENS	SINGLE UNIT: PERFORMANCE HORIZONTAL FOOTCANDLES INITIAL DOWNLIGHT ONLY				MULTIPLE UNITS: PERFORMANCE 80/50/20% REFLECTANCES HORIZONTAL FOOTCANDLES AND WATTS/SQ FT					
			Mounting Distance	FC at Beam Center	Diameter at Beam Angle	FC at Beam Edge	Ceiling Height	Fixture Spacing	RCR 3		RCR 5	
	0°	0° - 10° 44 6%	5.5'	15 fc	8.4'	4 fc	9'	6'	13	0.30	13	0.37
	0° 453	0° - 20° 175 22%	6.5'	11 fc	10.0'	3 fc	12'	8'	11	0.25	6	0.17
	5° 456	0° - 30° 368 47%	7.5'	8 fc	11.5'	2 fc	16'	12'	5	0.12	3	0.09
	15° 464	0° - 40° 542 69%	8.5'	6 fc	13.1'	2 fc	Delivered Illuminance Rating: (DIR) 43 FC per W/Sq. Ft. 36 FC per W/Sq. Ft.					
	25° 423	0° - 60° 680 87%	10.0'	5 fc	15.4'	1 fc	Recessed mounting Square rooms used for multiple units: RCR 3: Length & Width = Ceiling Ht. - 2.5' x 3.33 RCR 5: Length & Width = Ceiling Ht. - 2.5' x 2.00 * Average Initial Footcandles at 2.5' Above Floor					
	35° 284	0° - 80° 746 95%	12.0'	3 fc	18.4'	1 fc						
	45° 105	0° - 90° 771 98%	14.0'	2 fc	21.5'	1 fc						
	55° 56	Total 785 100%	16.0'	2 fc	24.6'	0 fc						
	90° 12											

Delivered Lumens: **785**
Luminaire Watts: **15.5**
LER: **50.65**

CP at 0° (Nadir): **453**
CRI: **80**

Beam Angle: **75°**
Spacing Ratio: **1.19**

Lumen Multiplier: **only 10L available**
CCT Multiplier: **only 30K available**

