



3" ROUND DEEP DOWNLIGHT

3000 LUMENS MAX

UNIVERSAL HOUSINGS WITH INTERCHANGEABLE TRIMS

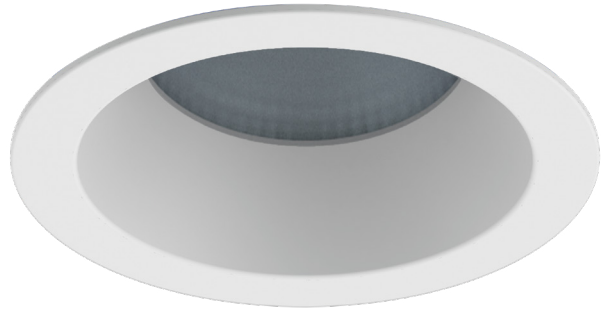
Spectrum's A Spec 3" recessed round downlight series features a 2" regressed trim and variety of options for accent and general illumination.

LUMENS AND WATTAGE CHART					
PART NUMBER	LUMENS	SOURCE LUMENS ¹	DELIVERED LUMENS ²	SYSTEM WATTS	LPW
RDD3F	XT10L	1000	954	11.1	86
RDD3F	XT13L	1300	1285	15	86
RDD3F	XT20L	2000	1977	23.7	83
RDD3F	XT30L	3000	2965	34.6	86

PROJECT: _____
 TYPE: _____

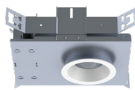


Lensed



AVAILABLE HOUSING TYPES

SR3DMO - New Construction / 30L Max



SR3DMI - IC New Construction / 20L Max



SR3DMR - Remodel Construction / 30L Max



FIXTURE HOUSING SPECIFICATION

SERIES		LUMENS ¹		DRIVER / DIMMING / VOLTAGE			OPTIONS		
SR3DMO	New Construction	XT10L	1000 Lm	E	Electronic Driver	1	120V	H12	12" - 24" Expandable Bars
SR3DMI	IC New Construction	XT13L	1300 Lm	DS10	10%, 0-10V	2	277V	H06	6" - 12" Expandable Bars
SR3DMR	Remodel Construction	XT20L ⁴	2000 Lm	DO10	1%, 0-10V			BH27	27" Solid Bars
		XT30L ^{4/5}	3000 Lm	DS2W1	ELV/MLV, 120V			CB24	24" C-Channel Bars
				DLTE1	1% Lutron® 2-Wire Forward Phase, 120V			CH24	24" Chicago Bars
		XN BEAM		DL3E	1% Lutron® EcoSystem® Fade			FS	Fusing
		XN10L	1000 Lm	EL10	1%, eldoLED			EM	Integral Emergency Battery
		XN13L ⁵	1300 Lm	ED01	0.1%, eldoLED			EMRM	Remote Emergency Battery Pack
				DMXS ^{6/7}	DMX Standard Configuration			EB	Black Housing
				DMXC ^{6/7}	DMX Non-Standard Custom			PR2	2" Thick Ceiling Adaptor
				BLU	Bluetooth LE				

- Die-cast aluminum trim with a wide variety of options.
- Deep regressed trim.
- Universal housing accepts all trim types, including N-Line trimless.
- Performance Xicato LED module for superior reliability and color consistency.
- Large selection of dimming and control options.
- Interchangeable optics and lenses.
- See SR3 for 1/2" shallow regress trim and SR3S for super shallow plenum.
- 5 year warranty on fixture and electronics.
- 10 year warranty on LED CCT.
- Bluetooth LE option.
- Sustainable fixture.
- Zhaga International Standard LED Module for future upgrades.
- 83CRI 2SDCM, 98CRI 1x2SDCM best in industry.

AVAILABLE TRIM / MODULE TYPES



TRIM / MODULE SPECIFICATION

TRIM		CCT		OPTICS		FINISH ¹¹		OPTIONS	
RDD3F	Downlight	83 CRI		XN ¹⁰	12°	MW ¹²	Matte White	NL	No Lens
RDA3F	35° Adjustable	27K	2700K	ND	25°	MB	Matte Black	SO	Micro Prism Solite™ Lens
RDI3F	15° Adjustable	30K	3000K	MD	43°	PT	Platinum Silver	LW ¹⁴	Wall Wash Spread Lens
RDW3F	Wall Wash	35K	3500K	WD	53°	BZ	Bronze	GL	Clear Glass Lens
		40K	4000K	XW	62°	CH	Charcoal	FG	Frosted Glass Lens
		98 CRI ARTIST ¹				OB	Oil Rubbed Bronze	PR2 ²	2" Thick Ceiling Adaptor
		27HK	2700K			AS	Sapphire	WL	Wet Location
		30HK	3000K			AM	Malachite	WF ¹⁵	White Flange
		35HK	3500K			SN	Sun Gold		
		40HK	4000K			CO	Copper Metallic		
						GH	Graphite		
						CC ¹³	Custom Color		

EXAMPLE: SR3DMOXT10LDS2W1/H12/RDA3F27KMDMWNL

NOTES:

1 Nominal Source Lumens at Any CCT 2 Nominal Delivered Lumens 83 CRI at Any CCT with MD-MW-GL Trim 3 20L Max 4 For 20L HK and 30L Options Install Fixtures in Accordance with the Following Marked Spacing: (a) Center To Center of Adjacent Luminaires: 600mm (24in); (b) Top of Luminaire to overhead Building Member: 39mm (1.5in); (c) Luminaire Center to side Building Member: 300mm (12in) 5 Not Available with HK 6 Contact Factory 7 Not Available in IC 8 ND and XW Optic Not Available 9 XW Optic Only / LW Lens Only 10 9mm, 13L Max, All XN Draw More Watts Than Other Optics; See Photometry 11 Inside Trim And Flange Will Match Color Specified 12 Standard Finish 13 Contact Factory for Special Finishes 14 Standard Lens for Wall Wash 15 Otherwise Flange Is Same Color As Interior Of Trim

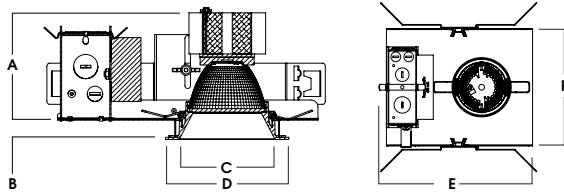
Dimensions and values shown are nominal. Spectrum Lighting continually works to improve products and reserves the right to make changes which may alter the performance or appearance of products.



HOUSING DIMENSIONS

SR3DMO - NEW CONSTRUCTION / 30L MAX

Non-IC rated, thermally protected frame-in kit for new construction. Non-IC designation requires insulation must be minimum of 3" from housing.



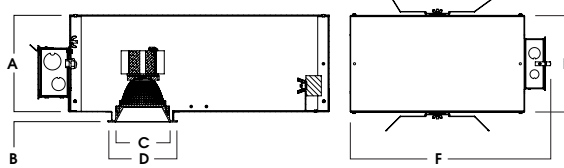
LED	A	B	C	D	E	F
XT10L	4.0	.625	3.63	4.5	9.6	7.6
XT13L	4.0	.625	3.63	4.5	9.6	7.6
XT20L	4.5	.625	3.63	4.5	9.6	7.6
XT30L	4.8	.625	3.63	4.5	9.6	7.6

Fixture Weight: 4.0 lbs

Ceiling Cutout: Ø 4"

SR3DMI - IC NEW CONSTRUCTION / 20L MAX

IC rated frame-in kit for new construction with direct insulation contact and CCEA (Chicago Plenum) compatibility.



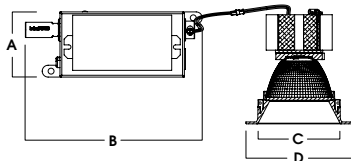
A	B	C	D	E	F
6.4	.625	3.63	4.5	9.5	10L-13L: 13.2
162.6 mm	15.9 mm	92.2 mm	114.3 mm	241.3 mm	20L: 19.2

Fixture Weight: 5.0 lbs

Ceiling Cutout: Ø 4"

SR3DMR - REMODEL CONSTRUCTION / 30L MAX

Non-IC rated frame-in kit for existing construction. Non-IC designation requires insulation must be minimum of 3" from housing.



A	B	C	D
2.8	7.5	3.63	4.5
71.1 mm	190.5 mm	92.2 mm	114.3 mm

Fixture Weight: 2.0 lbs

Ceiling Cutout: Ø 3 3/4"

FEATURES

FRAME-IN KIT

Precision Die-formed 20 gauge galvanized steel housing and integral junction box with (3) 5/8", (3) 7/8" and (2) 1 1/8" knockouts. Junction box capacity: 8 12AWG rated for 90 °C. Tool-less driver and junction box access for ease of maintenance. Post-loc trim retention springs for 5/8"-1" ceiling thickness. Use PR2 for up to 2" thick ceiling. For thicker ceilings consult factory.

MOUNTING

A variety of mounting bars are available (excluding remodel). Ceiling materials must be rigid to support luminaire frame.

DRIVER

Several constant current dimming drivers are available. Power factor >.9 typical, 50/60Hz, 350-1050mA.

TRIM

Self-flanged, one-piece, die-cast aluminum finished in a variety of powdercoat options. Inside trim and flange are finished in same color unless otherwise specified (WF= White Flange). For trimless options see N-Line.

REMODEL

Features tethered power supply and junction box with sheathed wire.

LUMEN OUTPUT

XN narrow optic restricted to 1300 lumens max. All other optics and kelvins maintain 1000-3000 lumens range.

LED

Zhaga compatible high performance Xicato module. Proprietary phosphor technology provides consistent and stable color with CCT control of +/- 100K over life of light engine.

EMERGENCY

Integral or remote 7W emergency battery options are available. Operates for 90 minutes and produces nominal 450 lumens.

DMX

See [DMX Connections and Settings Guide](#) for default configurations. Contact quotes@speclight.com or your local representative for custom solutions.

BLUETOOTH

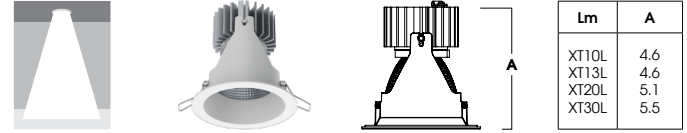
Integral Bluetooth LE option is available for dimming to .1%, grouping, remote access, electrical feedback and beacon technology.

FUSING

Integral optional fast blow fuse with fuse holder.

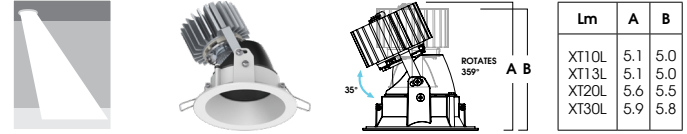
TRIM / MODULE DATA

RDD3F - DOWNLIGHT MODULE



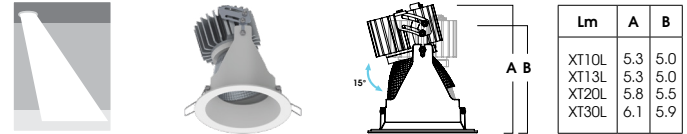
Lm	A
XT10L	4.6
XT13L	4.6
XT20L	5.1
XT30L	5.5

RDA3F - 35° ADJUSTABLE MODULE



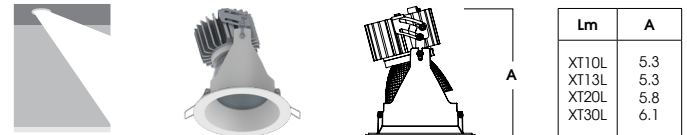
Lm	A	B
XT10L	5.1	5.0
XT13L	5.1	5.0
XT20L	5.6	5.5
XT30L	5.9	5.8

RDI3F - 15° ADJUSTABLE MODULE



Lm	A	B
XT10L	5.3	5.0
XT13L	5.3	5.0
XT20L	5.8	5.5
XT30L	6.1	5.9

RDW3F - WALL WASH MODULE



Lm	A
XT10L	5.3
XT13L	5.3
XT20L	5.8
XT30L	6.1

COLOR VARIATION

Standard CRI (83) within 2-step MacAdam Ellipse. High CRI (98) within 1x2-step MacAdam Ellipse.

LISTINGS

ETL Certified to meet US and Canadian Standards. Manufactured and tested to UL standard No. 1598/8750. BAA compliant. Wet location (WL), City of Chicago Environmental Air (CCEA), and Insulated Ceiling (IC) options available.

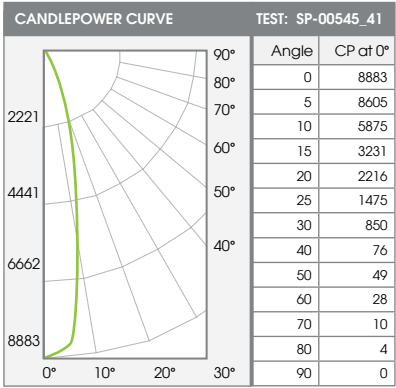
WARRANTY

Fixtures, LEDs and drivers carry 5 year Spectrum warranty, as well as individual OEM warranty. Warranty is 5 years from date of manufacturing. LED system rated for operation in an ambient temperatures up to 25 °C.



PHOTOMETRIC DATA - 3" ROUND DEEP

SR3DMx-XT30L-E1-RDD3x-xxK-ND-MW-GL



ZONAL LUMENS		
0-10	733	27%
0-20	1725	64%
0-30	2402	89%
0-40	2607	96%
0-60	2685	99%
0-80	2710	100%
0-90	2713	100%
Total Lumens	2713	100%

30L NARROW - 83 CRI

SINGLE UNIT: PERFORMANCE INITIAL FOOTCANDLES AND BEAM ANGLE DIAMETERS			
Mounting Height*	FC at Center	Diameter of Beam**	FC at Beam**
5.5'	294	2.5'	140
6.5'	210	2.9'	100
7.5'	158	3.4'	75
8.5'	123	3.8'	59
10'	89	4.5'	42
12'	62	5.4'	29
14'	45	6.3'	22
16'	35	7.2'	17

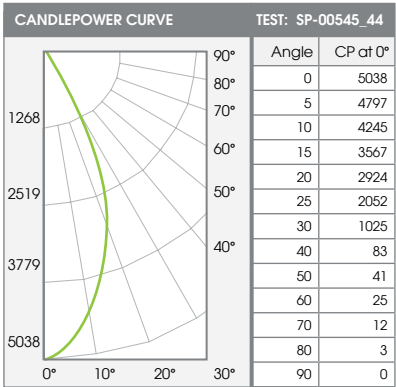
MULTIPLE UNITS: PERFORMANCE 80/50/20% REFLECTANCES INITIAL FOOTCANDLES AND WATTS PER SQUARE FOOT					
Ceiling Height	Fixture Spacing	RCR 8		RCR 10	
		FC*	W/Sq. Ft.	FC*	W/Sq. Ft.
8'	2.5'	87	1.38	63	1.08
12'	4'	58	0.92	56	0.96
16'	5'	49	0.78	48	0.81
Delivered Illuminance Rating: (DIR)		63 FC per W/Sq. Ft.		58 FC per W/Sq. Ft.	

Square Rooms used for Multiple Units:
 - RCR 8: Length & Width = Ceiling Ht. x 1.25
 - RCR 10: Length & Width = Ceiling Ht. x 1.0
 * Average Footcandles at floor

Delivered Lumens: 2713 CP @ 0° (Nadir): 8883 Beam Angle: 25.4°
 Luminaire Watts: 34.6 CRI: 83 Spacing Ratio: 0.44

FC Multipliers: 10L x 0.322, 13L x 0.433, 20L x 0.667
 W/Sq. Ft. Multipliers: 10L x 0.320, 13L x 0.433, 20L x 0.685

SR3DMx-XT30L-E1-RDD3x-xxK-MD-MW-GL



ZONAL LUMENS		
0-10	452	15%
0-20	1501	51%
0-30	2524	85%
0-40	2848	96%
0-60	2932	99%
0-80	2963	100%
0-90	2965	100%
Total Lumens	2965	100%

30L MEDIUM - 83 CRI

SINGLE UNIT: PERFORMANCE INITIAL FOOTCANDLES AND BEAM ANGLE DIAMETERS			
Mounting Height*	FC at Center	Diameter of Beam**	FC at Beam**
5.5'	167	4.5'	71
6.5'	119	5.3'	51
7.5'	90	6.2'	38
8.5'	70	7.0'	30
10'	50	8.2'	22
12'	35	9.8'	15
14'	26	11.5'	11
16'	20	13.1'	8

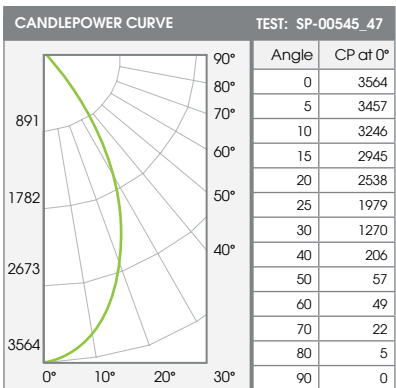
MULTIPLE UNITS: PERFORMANCE 80/50/20% REFLECTANCES INITIAL FOOTCANDLES AND WATTS PER SQUARE FOOT					
Ceiling Height	Fixture Spacing	RCR 4		RCR 6	
		FC*	W/Sq. Ft.	FC*	W/Sq. Ft.
8'	5'	62	0.78	56	0.79
12'	8'	49	0.62	56	0.78
16'	10'	27	0.35	32	0.44
Delivered Illuminance Rating: (DIR)		78 FC per W/Sq. Ft.		72 FC per W/Sq. Ft.	

Square Rooms used for Multiple Units:
 - RCR 4: Length & Width = Ceiling Ht. x 2.5
 - RCR 6: Length & Width = Ceiling Ht. x 1.66
 * Average Footcandles at floor

Delivered Lumens: 2965 CP @ 0° (Nadir): 5038 Beam Angle: 44.6°
 Luminaire Watts: 34.6 CRI: 83 Spacing Ratio: 0.72

FC Multipliers: 10L x 0.322, 13L x 0.433, 20L x 0.667
 W/Sq. Ft. Multipliers: 10L x 0.320, 13L x 0.433, 20L x 0.685

SR3DMx-XT30L-E1-RDD3x-xxK-WD-MW-GL



ZONAL LUMENS		
0-10	318	12%
0-20	1120	41%
0-30	2008	73%
0-40	2550	93%
0-60	2719	99%
0-80	2755	100%
0-90	2757	100%
Total Lumens	2757	100%

30L WIDE - 83 CRI

SINGLE UNIT: PERFORMANCE INITIAL FOOTCANDLES AND BEAM ANGLE DIAMETERS			
Mounting Height*	FC at Center	Diameter of Beam**	FC at Beam**
5.5'	118	5.5'	47
6.5'	84	6.5'	34
7.5'	63	7.4'	25
8.5'	49	8.4'	20
10'	36	9.9'	14
12'	25	11.9'	10
14'	18	13.9'	7
16'	14	15.9'	6

MULTIPLE UNITS: PERFORMANCE 80/50/20% REFLECTANCES INITIAL FOOTCANDLES AND WATTS PER SQUARE FOOT					
Ceiling Height	Fixture Spacing	RCR 2		RCR 4	
		FC*	W/Sq. Ft.	FC*	W/Sq. Ft.
8'	6'	66	0.78	58	0.78
12'	9'	29	0.35	26	0.35
16'	12'	16	0.20	14	0.20
Delivered Illuminance Rating: (DIR)		82 FC per W/Sq. Ft.		73 FC per W/Sq. Ft.	

Square Rooms used for Multiple Units:
 - RCR 2: Length & Width = Ceiling Ht. x 5.0
 - RCR 4: Length & Width = Ceiling Ht. x 2.5
 * Average Footcandles at floor

Delivered Lumens: 2846 CP @ 0° (Nadir): 3564 Beam Angle: 52.8°
 Luminaire Watts: 34.6 CRI: 83 Spacing Ratio: 0.84

FC Multipliers: 10L x 0.322, 13L x 0.433, 20L x 0.667
 W/Sq. Ft. Multipliers: 10L x 0.320, 13L x 0.433, 20L x 0.685