

CANDLEPOWER CURVE
TEST SP-15009_1

Delivered Lumens: 2140
Luminaire Watts: 20
LER: 107.00

INTENSITY
CANDELA
0° AZIMUTH

0°
0° 9946
5° 9005
15° 3184
25° 573
35° 175
45° 68
55° 25
90° 2

CP at 0° (Nadir): 9946
CRI: 80+

ZONAL LUMENS

0° - 10°	783	37%
0° - 20°	1655	77%
0° - 30°	1936	90%
0° - 40°	2049	96%
0° - 60°	2123	99%
0° - 80°	2129	99%
0° - 90°	2130	100%
Total	2140	100%

Beam Angle: 24°
Spacing Ratio: 0.41
Melanopic Ratio 0.57

SINGLE UNIT: PERFORMANCE
HORIZONTAL FOOTCANDLES
INITIAL DOWNLIGHT ONLY

Mounting Distance	FC at Beam Center	Diameter at Beam Angle	FC at Beam Edge
6.5 '	235 fc	2.8 '	110 fc
7.5 '	177 fc	3.2 '	83 fc
8.5 '	138 fc	3.6 '	64 fc
10.0 '	99 fc	4.3 '	47 fc
12.0 '	69 fc	5.1 '	32 fc
14.0 '	51 fc	6.0 '	24 fc
16.0 '	39 fc	6.8 '	18 fc
20.0 '	25 fc	8.5 '	12 fc

CCT Multiplier: 30K x .93

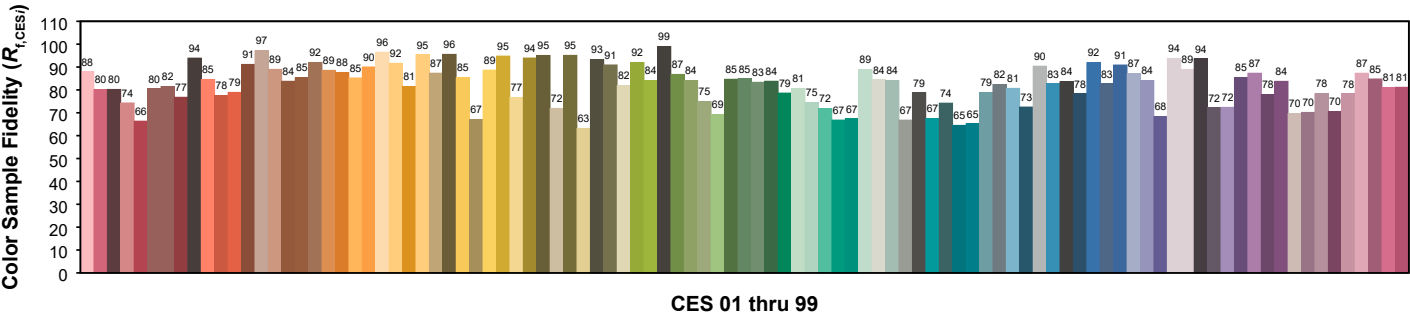
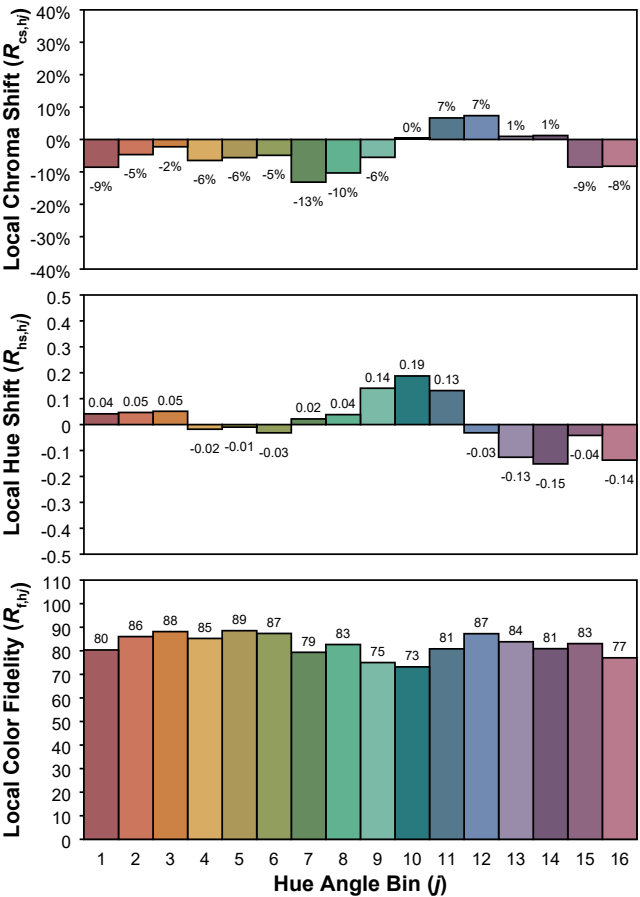
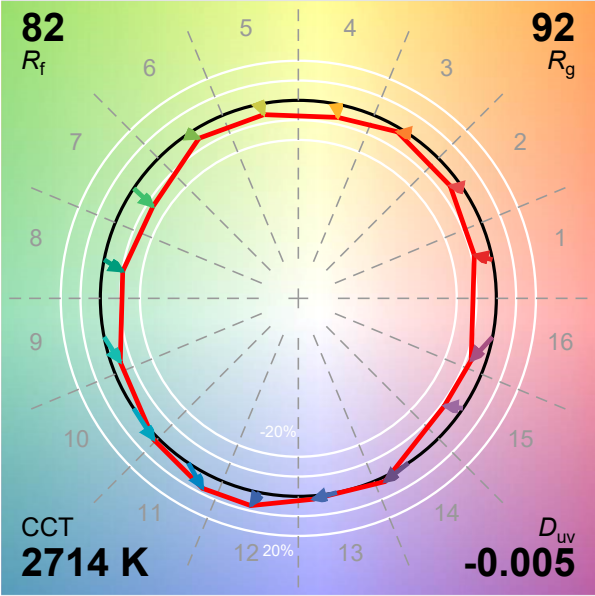
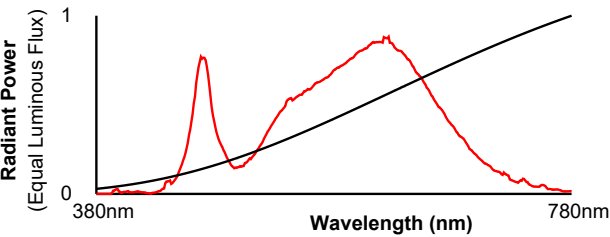
MULTIPLE UNITS: PERFORMANCE
80/50/20% REFLECTANCES
HORIZONTAL FOOTCANDLES AND WATTS/SQ FT

Ceiling Height	Fixture Spacing	RCR 4		RCR 6	
		FC +	W/Sq. Ft.	FC +	W/Sq. Ft.
15'	4'	123	1.19	132	1.37
18'	5'	77	0.75	83	0.86
22'	6'	62	0.60	51	0.53
Delivered Illuminance Rating: (DIR)		103 FC per W/Sq. Ft.		96 FC per W/Sq. Ft.	
1' Suspension Length to luminous aperture Square rooms used for multiple units: RCR 4: Length & Width = Ceiling Ht. - 3.5' x 2.50 RCR 6: Length & Width = Ceiling Ht. - 3.5' x 1.66 + Average Initial Footcandles at 2.5' Above Floor					

IES TM-30-18 Color Rendition Report

Manufacturer: Spectrum Lighting

Model: SP-15009_1 ~ TSRA31 21L 35K ND E1 BET xx



Luminous Flux:	1894 lm
Radiant Flux:	6 Wrad
Electrical Power:	20 W
Efficacy:	95 lm/W
Melanopic Flux:	1080 mel lm
Melanopic Ratio:	0.57
CCT:	2714K
xy Coordinates:	0.445, 0.394
u'v' Coordinates:	0.261, 0.519
Delta u'v':	-0.005

CIE u'v' (1976)

