



8" SQUARE DIRECT FOCUSED ILLUMINATION



CO812SQXT, CO816SQXT, CO824SQXT - WALL MOUNT

APPLICATION

8" square x 12", 16" or 24" high 8" diameter series cylinder luminaire for accent and general illumination.

FEATURES

Spectrum's Cylinder series provides traditional architectural style with high performance and energy efficient illumination. Rugged design with flexible mounting, finish and LED options make these extremely versatile fixtures. Quick change LED module with interchangeable optics for job site flexibility and fixture upgrade.

FINISH

Multi-stage polyester powder-coat process applied on our dedicated paint lines. See mounting and color pages for standard finishes. All exposed materials are chromate pre-treated to resist corrosion.

ELECTRONICS

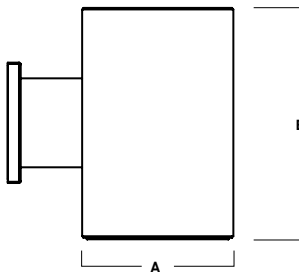
LED system features Xicato LED module with proprietary phosphor technology that provides consistent stable color with CCT control of +/- 100K over life of the light engine. Base CRI is 83 with 2-step MacAdam Ellipse binning. High CRI is 98 with 1 x 2-step MacAdam Ellipse binning. Variety of electronic 120V/277V and dimming drivers.

CONSTRUCTION

Fabricated seamless aluminum fixture housing. Silicone gasket seals optical chamber. Specular primary optical reflectors provide high efficiency illumination. Impact resistant tempered glass lenses. Trim formed from .063 thick high purity aluminum and finished to specification.

CODE COMPLIANCE

BAA compliant. ETL certified to meet US and Canadian standards. Suitable for dry or damp locations. Manufactured and tested to UL standards No. 1598/8750.



SERIES	A	B
CO812SQXT	8.0	12.1
CO816SQXT	8.0	16.1
CO824SQXT	8.0	24.1

Fixture Weight: 21.5 lbs

LUMENS / WATTAGE DATA				
PART NUMBER	SOURCE LUMENS	DELIVERED LUMENS ²	SYSTEM WATTS ³	LPW
CO8xxSQXT10L	1000	740	9.1	81
CO8xxSQXT13L	1300	998	13.0	77
CO8xxSQXT20L	2000	1535	21.7	71
CO8xxSQXT30L	3000	2302	32.6	71

SERIES	LUMENS ¹	CCT	OPTICS	DRIVER / DIMMING ⁶	OPTIONS ⁷	TRIM	MOUNTING ¹¹	FINISH ¹²
CO812SQXT 8" x 12" Cylinder	10L 1000 Lm	83 CRI	XN ⁸ 13°	EX Electronic Driver, 120V/277V	FS Fuse Holder and Fuse	TCY ⁹ Same Color as Cylinder TPT Platinum Silver TCC Custom Color	WM3 Wall Mount 3" Extension WM5 Wall Mount 5" Extension	MW ¹³ Matte White MB ¹³ Matte Black PT ¹³ Platinum Silver CC Custom Color
	13L 1300 Lm	27K 2700K	ND 22°	DS10X 10%, 0-10V, 120V/277V	CR Corrosion Resistant			
CO816SQXT 8" x 16" Cylinder	20L 2000 Lm	30K 3000K	MD 41°	DO10X 1%, 0-10V, 120V/277V				
	30L 3000 Lm	35K 3500K	WD 48°	DS2W1 ELV/MLV, 120V				
CO824SQXT 8" x 24" Cylinder		98 CRI ¹	XW 59°	DLTE1 Lutron 2-Wire Forward Phase (MLV), 120V		LENS NL No Lens GL ⁹ Clear Glass Lens SO ¹⁰ Micro Prism Solite™ Lens	EMERGENCY BATTERY OPTIONS EMRM 7W Canopy Mounted EM EMEN 7W Remote EM	
				DL3EX 1% Lutron® EcoSystem® Fade, 120V/277V				
				ED01X 0.1%, eldoLED 120V/277V				
				DALIX DALI Control				
		27HK 2700K						
		30HK 3000K						
		35HK 3500K						
		40HK 4000K						

EXAMPLE: CO812SQXT20L35KWDEX/TPTSO/WM5/MW

NOTES:

1 Nominal Source Lumens at Any CCT 2 Nominal Delivered Lumens at 83 CRI at Any CCT with WD-TSG-SO 3 At 83 CRI 4 20L Max 5 13L Max/XN not Available with 98 CRI Option 6 Contact Factory for Additional Options 7 See Product Options Page for Details 8 Standard Finish 9 Standard Lens for XN, ND 10 Standard Lens for MD, WD, XW 11 See Mounting Page for Details on Components and Finishes 12 Reference Color Sheet Located on Product Webpage for Full List of Available Colors 13 Standard Finishes



PROJECT: _____
TYPE: _____



Dimensions and values shown are nominal. Spectrum Lighting continually works to improve products and reserves the right to make changes which may alter the performance or appearance of products.

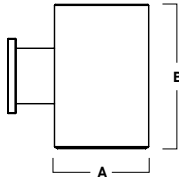
8" SQUARE DIRECT

FOCUSED ILLUMINATION / FIXTURE OPTIONS



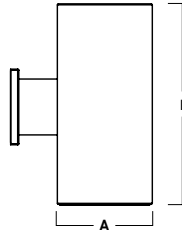
SERIES SIZES

CO812SQXT



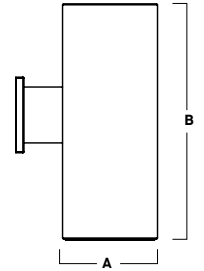
A	B
8.0	12.1
203.2 mm	307.3 mm

CO816SQXT



A	B
8.0	16.1
203.2 mm	408.9 mm

CO824SQXT



A	B
8.0	24.1
203.2 mm	612.1 mm

STANDARD FINISHES

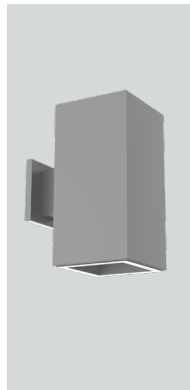
MW
MATTE WHITE



MB
MATTE BLACK

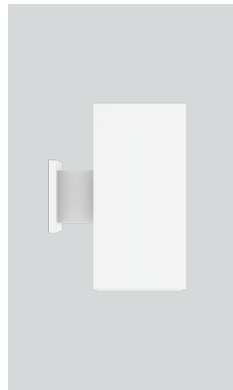


PT
PLATINUM SILVER

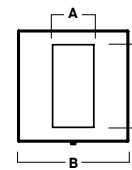


WALL MOUNT DETAIL

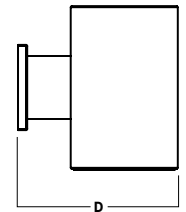
WM3
WALL MOUNT 3" EXTENSION



FRONT VIEW

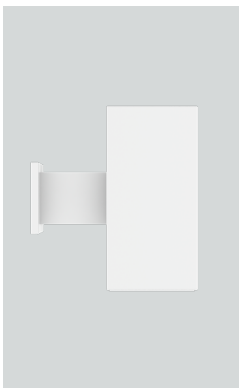


SIDE VIEW

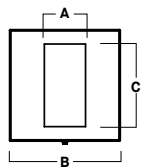


A	B	C	D
2.4	6.4	4.7	11.9
61.0 mm	162.6 mm	119.4 mm	302.3 mm

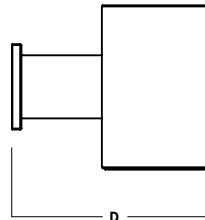
WM5
WALL MOUNT 5" EXTENSION



FRONT VIEW



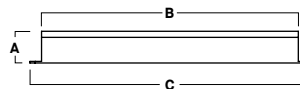
SIDE VIEW



A	B	C	D
2.4	6.4	4.7	14.7
61.0 mm	162.6 mm	119.4 mm	373.4 mm

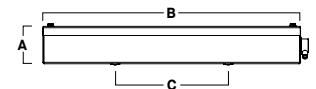
EMERGENCY BATTERY OPTIONS

EMRM* - 7W REMOTE EMERGENCY BATTERY
(50' MAX)



A	B	C
1.3	12.6	13.0

EMEN* - 7W REMOTE EMERGENCY BATTERY
WITH ENCLOSURE (50' MAX)



A	B	C
2.0	17.0	6.2

*OTHER EM BATTERY SIZES AVAILABLE, CONSULT FACTORY

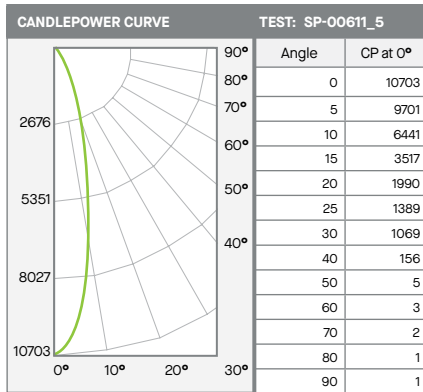
8" SQUARE DIRECT

FOCUSED ILLUMINATION / PHOTOMETRIC DATA



C08xxSQXT-30LxxK-NDEX-TSG-GL

30L NARROW - 83 CRI



Distance	Lumens	%
0-10	776	28%
0-20	1749	64%
0-30	2407	88%
0-40	2699	99%
0-60	2725	100%
0-80	2732	100%
0-90	2737	100%
Total Lumens	2739	100%

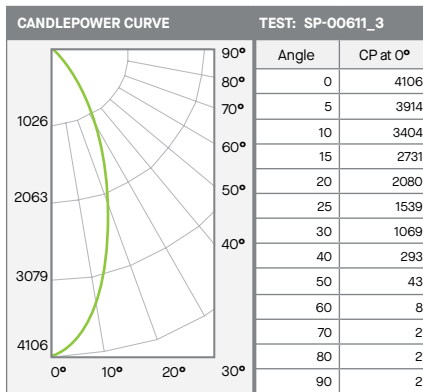
Mounting Height*	FC at Center	Diameter of Beam**	FC at Beam**
5.5'	354	2.1'	170
6.5'	253	2.5'	122
7.5'	190	2.9'	92
8.5'	148	3.3'	71
10.0'	107	3.9'	52
12.0'	74	4.7'	36
14.0'	55	5.5'	26
16.0'	42	6.2'	20

* From aperture to horizontal surface below.
** At IESNA defined Beam Angle, to 50% Max. CP.

Delivered Lumens: 2739 CP @ 0° (Nadir): 10703 Spacing Ratio: 0.4
 Luminaire Watts: 32.6 Beam Angle: 22.1° Output Multipliers: 10L x 0.32, 13L x 0.43, 20L x 0.67
 LER: 84 CRI: 83

C08xxSQXT-30LxxK-MDEX-TSG-SO

30L MEDIUM - 83 CRI



Distance	Lumens	%
0-10	359	15%
0-20	1132	49%
0-30	1857	80%
0-40	2220	95%
0-60	2318	99%
0-80	2327	100%
0-90	2333	100%
Total Lumens	2334	100%

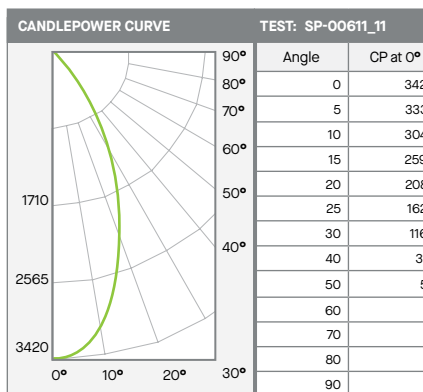
Mounting Height*	FC at Center	Diameter of Beam**	FC at Beam**
5.5'	136	4.1'	60
6.5'	97	4.9'	43
7.5'	73	5.6'	32
8.5'	57	6.4'	25
10.0'	41	7.5'	18
12.0'	29	9.0'	13
14.0'	21	10.5'	9
16.0'	16	12.0'	7

* From aperture to horizontal surface below.
** At IESNA defined Beam Angle, to 50% Max. CP.

Delivered Lumens: 2334 CP @ 0° (Nadir): 4106 Spacing Ratio: 0.64
 Luminaire Watts: 32.6 Beam Angle: 41.1° Output Multipliers: 10L x 0.32, 13L x 0.43, 20L x 0.67
 LER: 72 CRI: 83

C08xxSQXT-30LxxK-WDEX-TSG-SO

30L WIDE - 83 CRI



Distance	Lumens	%
0-10	307	13%
0-20	1021	44%
0-30	1754	76%
0-40	2156	94%
0-60	2284	99%
0-80	2295	100%
0-90	2301	100%
Total Lumens	2302	100%

Mounting Height*	FC at Center	Diameter of Beam**	FC at Beam**
5.5'	113	4.9'	47
6.5'	81	5.8'	34
7.5'	61	6.7'	25
8.5'	47	7.6'	20
10.0'	34	8.9'	14
12.0'	24	10.7'	10
14.0'	17	12.5'	7
16.0'	13	14.2'	6

* From aperture to horizontal surface below.
** At IESNA defined Beam Angle, to 50% Max. CP.

Delivered Lumens: 2302 CP @ 0° (Nadir): 3420 Spacing Ratio: 0.74
 Luminaire Watts: 32.6 Beam Angle: 48° Output Multipliers: 10L x 0.32, 13L x 0.43, 20L x 0.67
 LER: 71 CRI: 83

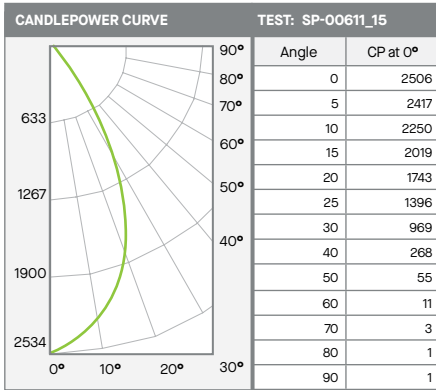
8" SQUARE DIRECT

FOCUSED ILLUMINATION / PHOTOMETRIC DATA



C08xxSQXT-30LxxK-XWEX-TSG-SO

30L XTRA WIDE - 83 CRI



Beam Angle	Lumens	% of Total
0-10	232	10%
0-20	841	38%
0-30	1574	71%
0-40	2028	91%
0-60	2209	99%
0-80	2221	100%
0-90	2226	100%
Total Lumens	2227	100%

Mounting Height*	FC at Center	Diameter of Beam**	FC at Beam**
5.5'	83	6.2'	31
6.5'	59	7.3'	22
7.5'	45	8.5'	17
8.5'	35	9.6'	13
10.0'	25	11.3'	10
12.0'	17	13.6'	7
14.0'	13	15.8'	5
16.0'	10	18.1'	4

* From aperture to horizontal surface below.
 ** At IESNA defined Beam Angle, to 50% Max. CP.

Delivered Lumens: 2227 CP @ 0° (Nadir): 2506 Spacing Ratio: 0.84
 Luminaire Watts: 32.6 Beam Angle: 58.9° Output Multipliers: 10L x 0.32, 13L x 0.43, 20L x 0.67
 LER: 68 CRI: 83