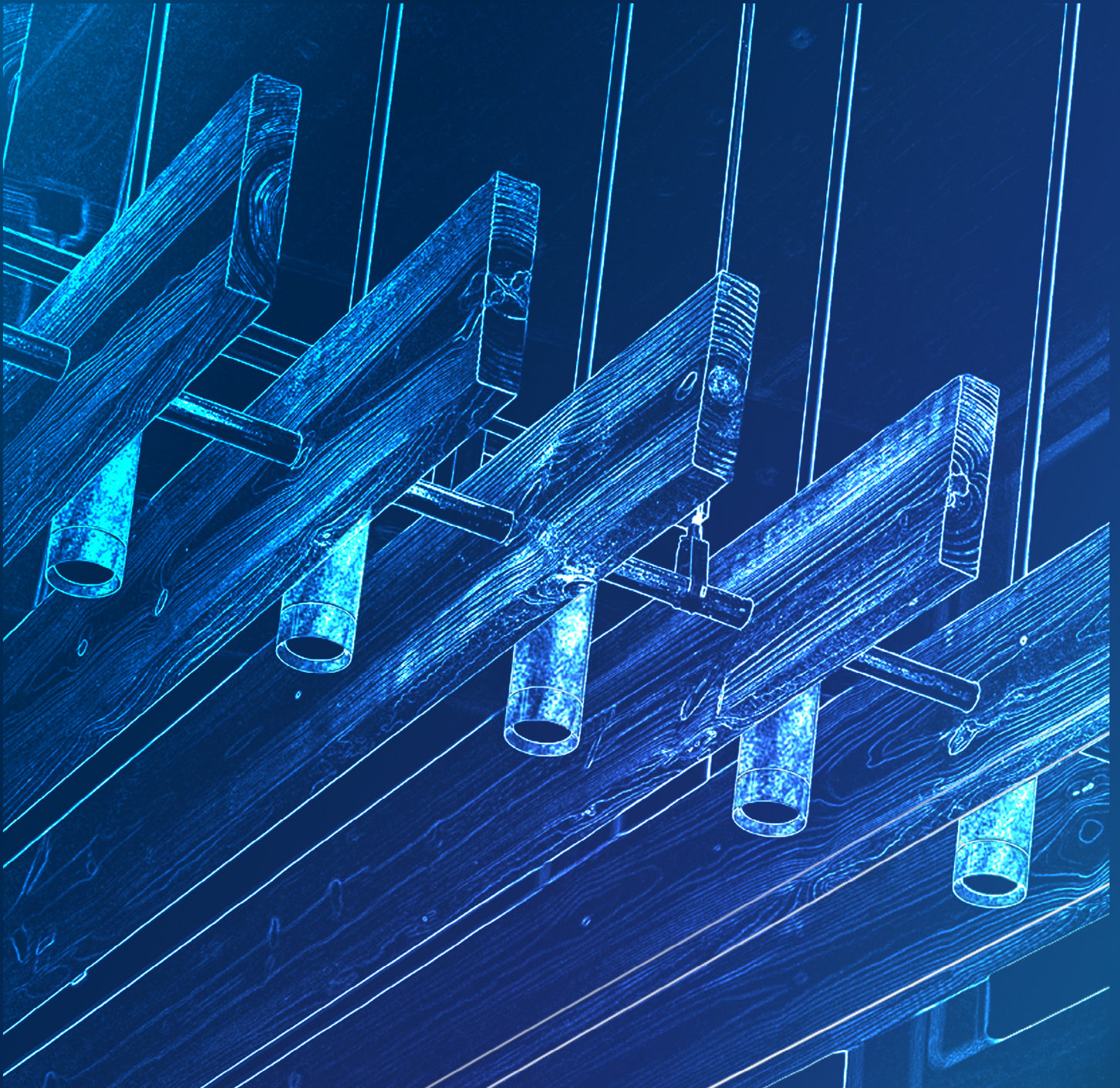


# DECORATIVE LIGHTING

**DESIGNER GUIDE**



Spectrum Lighting

ILLUMINATING WHAT'S POSSIBLE.







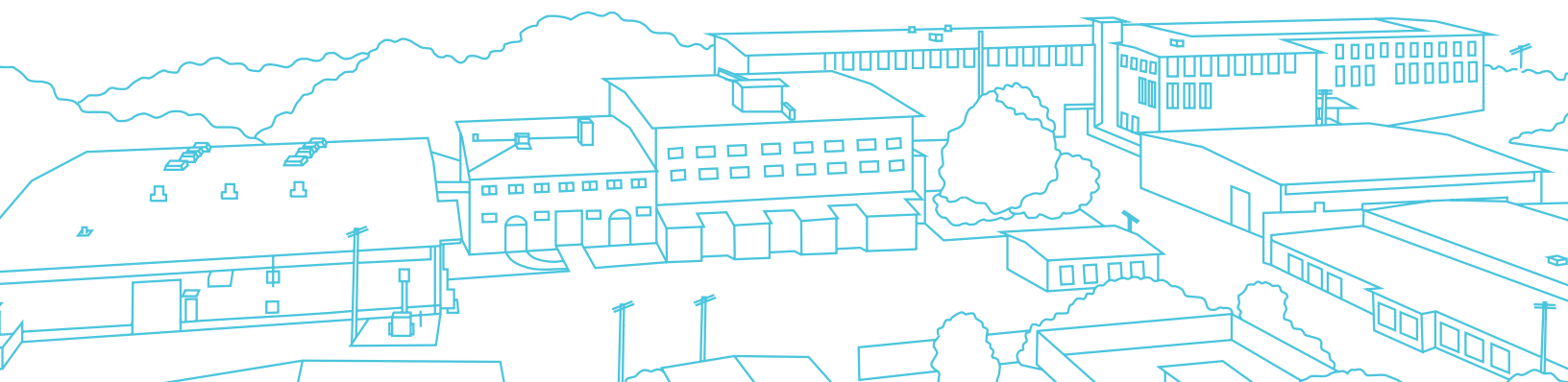


Our portfolio is broad like a large manufacturer, but our way of working is responsive — the way only an independent business can be. We value having the freedom and flexibility to quickly meet your lighting needs and deliver solutions that bring your vision to life.

We're here to guide you with a deep understanding of the lighting industry and we'll always take the time to answer your questions, listen to your ideas, and offer up a fresh perspective. When things get tough we're all-hands-on-deck, because we're here to help you get the job done—no matter what.

We've learned a lot in the past 30 years, and we're proud to share that knowledge with you. Because with greater knowledge comes greater possibilities for us all, and we've built our business on illuminating new possibilities.

ILLUMINATING WHAT'S POSSIBLE.





# OUR STORY

**"AT SPECTRUM, WE HAVE ALWAYS CHARTED OUR OWN COURSE, WITH DEEP LIGHTING KNOWLEDGE TO SHARE & AN APPETITE FOR DISCOVERING NEW POSSIBILITIES."**

---

PRESIDENT CHRIS ROEMLEIN



Spectrum Lighting was started in 1992 with a partnership between Jeff Fein and Chris Roemlein. High school friends, they connected after college with the goal of starting a business and living in a great part of the world. After going through a list of possible businesses, they decided low voltage landscape lighting would be a unique business. At the time there was little competition and most outdoor fixtures were line voltage. Utilizing low voltage outdoor par 36, DC base and halogen lamps and employing a local machine shop the partners built a line of understated functional outdoor luminaires.

The original company was named Alta Industries and the name and logo shared another belief in that life should be "big" fun. The partners shared a joy in skiing, climbing, mountain biking, scuba diving, windsurfing and sailing in Newport, Rhode Island. We called it fun hogging after one of our heroes, Yvon Chouinard of Patagonia. Their first sailboat was named Fun Hog.

During the mid-late 1990s the United States saw many industries shut down factories and move to China and then in the 2000s to Mexico. It was during this time that many companies auctioned or sold off equipment that was specialized in the manufacturing of metal components. The company was able to integrate equipment from local silver and hollowware companies like Reed and Barton, Gorham and others that shut factories.

One of the prides of the company is maintaining a strength in metalworking; protecting age old techniques like metal spinning while embracing new technologies like laser cutting and CNC machinery. It is the mix of tradition and technology that make Spectrum special.

In 1996 the company changed names to Spectrum Lighting and entered the architectural lighting market with downlights and decorative luminaires. The logo was changed to a free form wave to symbolize having fun while you work. The company developed new products and kept true to form adding people, buildings and equipment in the pursuit of having a sustainable private business, designing and producing all fixtures in house.

Today Spectrum has a 250,000 sq. ft. factory located on 5 acres in Fall River, MA and employs 250 people. We take pride in manufacturing locally and providing a high quality work life for all our employees.





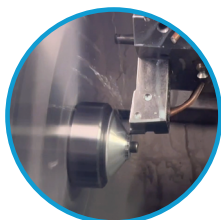




# A LOOK INSIDE SPECTRUM...

## Machine Shop

The machine shop has several high speed machining centers to produce press and spin tooling, LED heat sinks as well as turning, milling, EDM and other operations.



## Press

Spectrum has over 75 manual, hydraulic and mechanical presses to draw, form and finish our spun and stamped parts. All tooling is produced and maintained here in-house.



## Tech Center

Refresh your understanding of the universal qualities of light: intensity, distribution, and color. Gain new insights on the essential functions of light.



## Laser Fabrication

Our laser cutting machines are used for precision cutting in a wide range of projects.



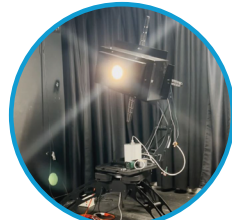
## Engineering

Our engineering, product design and support teams design leading edge products with all industrial, electrical, optical and mechanical design done in house.



## Photometric Lab

Our photometric lab measures the optical performance of our luminaires, including luminous intensities, a plethora of color data and even flicker data.





We are a vertically integrated manufacturer, controlling every aspect of production, from fabrication through assembly with heart felt dedication, in the United States to ensure design integrity and consistently deliver a high level of quality and service.



### Customer Care

Our team will help with quoting projects, fixture specification questions, sales help, commitment dates on orders, tech support, custom or special fixture designs and lighting design assistance.



### Assembly

With independent work cells, rather than fixed assembly lines, we are able to provide more interesting work to our teams as well as turn out multiple products on each work cell.



### Welding

Spectrum Lighting prides itself on in-house fabrication with TIG, MIG, arc and spot welding. This process allows us to finish fixtures, trims and housings to a high standard.



### Heat Test Lab

The heat lab checks for excessive heat over recommended limits to monitor safety and longevity of luminaires.



### Spinning

Our spinning is performed by skilled craftsmen on hand spinning lathes as well as automated machines.



### Finishing

Spectrum runs a state of the art powder coat process with a five stage chromate pretreat and multi-stage oven.





# SPECLUME DECORATIVE



Spectrum Lighting's SpecLume Decorative Series is inspired by contemporary designs and finishes. This series features integral high lumen LEDs with frosted dome enclosures set high in the shade for maximum visual comfort.





## CONTEMPORARY SERIES

Enhance your lighting projects with the versatile Vino and Banco Pendants. The Vino (VP2407PX) features a rolled front edge and hidden hardware, while the Banco (RG1817GV) offers a bold, classic design with refined details, making both striking additions to residential, architectural and commercial spaces.

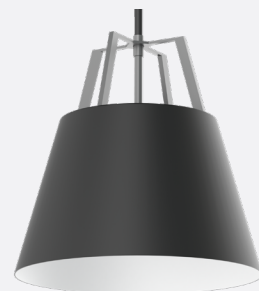


Vino Dining Room

**VINO PENDANT - 6000 LM**  
VP2407PX - 24.1" x 7.2"



**BANCO PENDANT - 5500 LM**  
RG1817GV - 18.1" x 17.6"



# GLOBO SERIES

## GIANT GLOBE - 5500 LM

GPRF1200GV - 12"



GPRF1600GV - 16"



GPRF2000GV - 20"



GPRF2400GV - 23.9"



GPRF3600GV - 36.5"



## HALF MOON - 2700 LM

HP1200GV - 12"



Bubble Dental - Newton, MA



Health Catalyst - Cottonwood Height, UT



Elevate your lighting design with Spectrum Lighting's versatile Globo Series, featuring the Half Moon Pendant (HP1200GV) and the Giant Globe Radius Fitter Pendant (GPRF-GV). The HP1200GV combines high-quality aluminum construction with white opal acrylic for a clean, modern look. The GPRF-GV features an opal acrylic globe in various sizes and a smooth radius fitter, delivering energy-efficient LED illumination. Designed and manufactured in the USA, these BAA-compliant, ETL-certified pendants provide durable, reliable, and versatile lighting solutions for any commercial or residential application.



Fircrest Community Center - Fircrest, WA



Keller Whitley Road Elementary School - Keller, TX



Jnana Therapeutics - Boston, MA

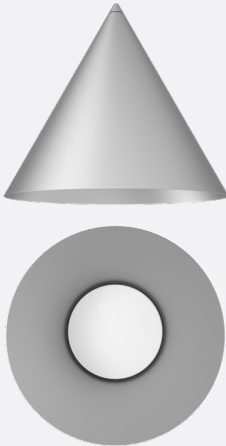


# SPIN SERIES

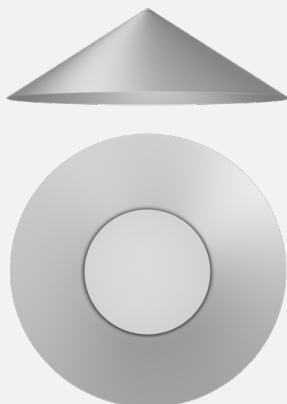
**SN12**  
12" x 26.1"



**SN24**  
22" x 24"



**SN32**  
32" x 10.8"



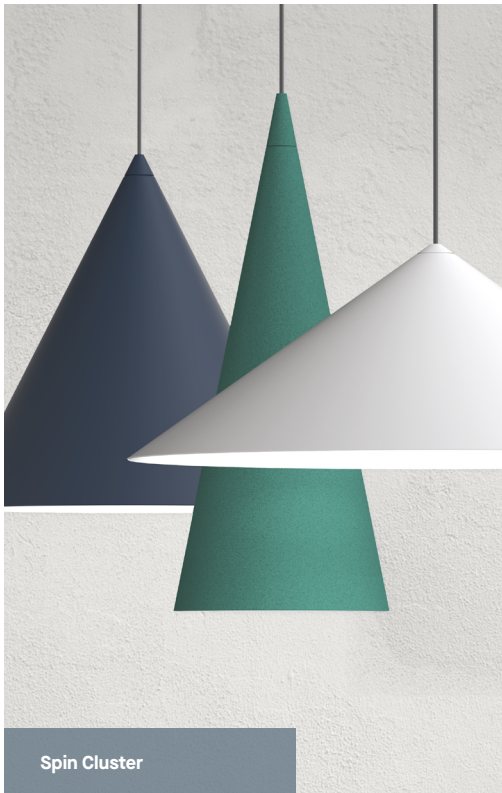
SN12 Office Space



DPR - Cambridge, MA



Comprised of three distinct shapes, the Spin Pendants reflect timeless form that can elevate the atmosphere of any architectural space. Designed in collaboration with Elkus Manfredi Architects. Every detail has been considered and executed with a designer's eye, including CNC precision machined finials, minimalist mounting, soft etch lensing, and no visible hardware. The Spin pendants are truly one of the most refined pendant luminaire series available, and are made by hand in America. Available with outputs up to 3000 delivered lumens along with efficacies reaching 108 LPW. No visible hardware provides seamless aesthetics and refined craftsmanship.



Spin Cluster



Cluster Living Room



Spectrum Powder Coating



Spectrum Metal Spinning



# DOMO SERIES

## HALF DOME PENDANT - 5500 LM

HD1606GV - 15.7" x 7"



HD2412GV - 24" x 12.7"



HD3012GV - 30.4" x 12.3"



## ORION PENDANT - 5500 LM

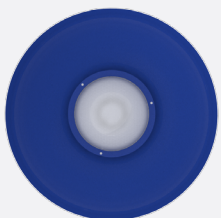
ON1606GV - 15.7" x 7"



ON2412GV - 24" x 12.7"



ON3012GV - 30.4" x 12.3"





The Domo Family redefines contemporary lighting with its sleek designs and exceptional performance. Handcrafted in Massachusetts, these fixtures combine high-lumen integral LEDs with frosted dome enclosures for glare-free, visually comfortable illumination. Whether it's the modern elegance of the Half Dome Pendant or the classic charm of the Retro Pendant, the Domo Family offers versatile options in lumen outputs, color temperatures, and finishes to suit any space. Crafted from high-purity aluminum with meticulous attention to detail, these pendants seamlessly merge form and function, providing energy-efficient lighting solutions with a touch of sophistication.

### TETON - 5500 LM

EG1210GV - 11.5" x 11.2"



EG1612GV - 16.1" x 13.4"



### GRAND TETON - 5500 LM

SD1210GV - 11.5" x 11.2"

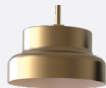


SD1612GV - 16.1" x 13.4"



### CLARENCE PENDANT- 5500 LM

CL0612GV - 12.1" x 7.5"



CL0916GV - 16.1" x 9.7"



CL1324GV - 24" x 14"





# ESPRESSO SERIES

## DUO ESPRESSO - 2000 LM

ME0604GV - 6" x 6"



ME0709GV - 7.4" x 9.2"



## MINI ESPRESSO - 2700 LM

**DIRECT**

ME0713DGV - 7.5" x 13"



**DIRECT / INDIRECT**  
ME0713UDGV - 7.5" x 13"



## ESPRESSO - 5500 LM

**DIRECT**

ME1314DGV - 13.9" x 14.4"  
ME1816DGV - 16.7" x 18.1"

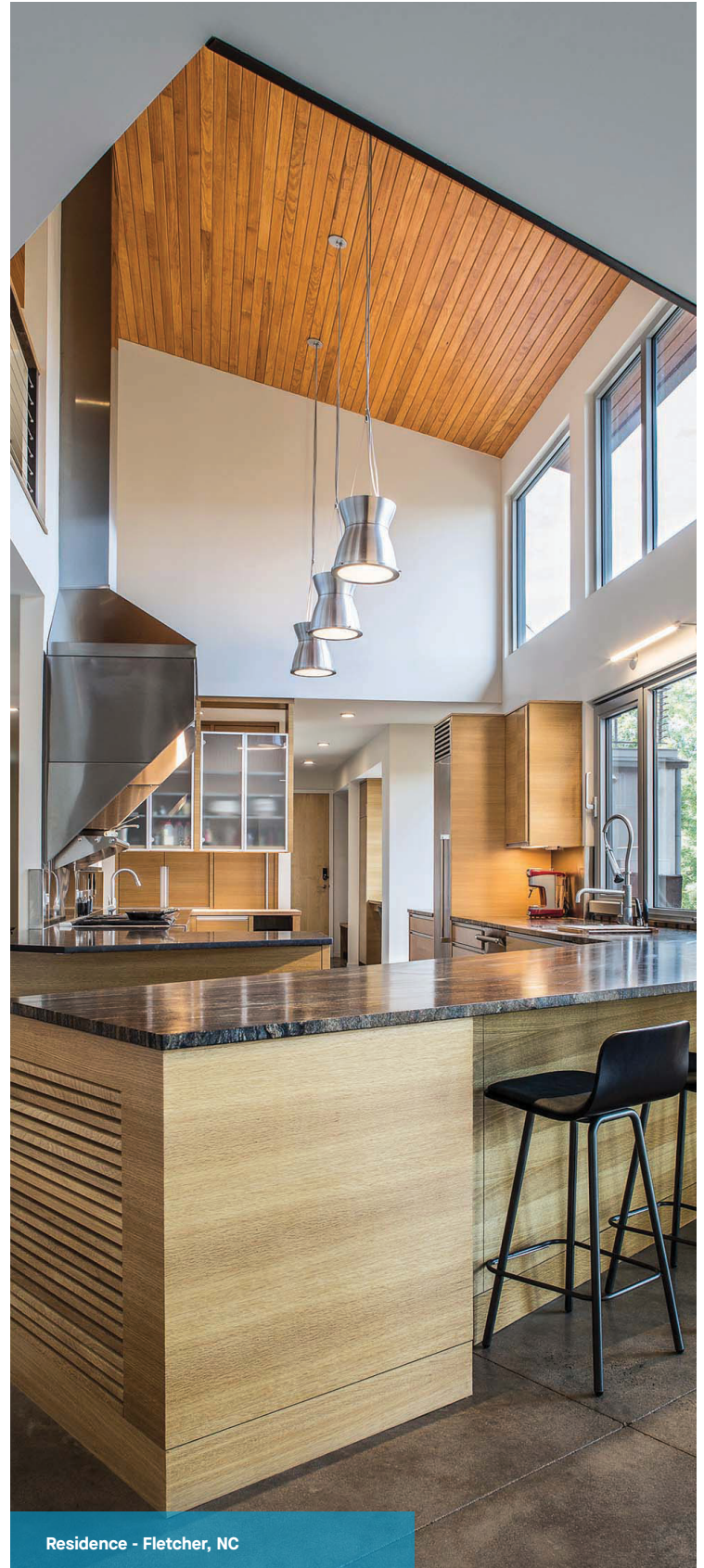


**DIRECT / INDIRECT**  
ME1314UDGV - 13.9" x 14.4"  
ME1816UDGV - 16.7" x 18.1"





The Spectrum Lighting Espresso Series offers a versatile collection of sleek pendant luminaires designed to enhance any modern space with elegance and excellent performance. Featuring a minimalist curved cylindrical design, these pendants provide tailored illumination with options for direct and direct/indirect lighting configurations. Available in multiple sizes, delivering up to 5500 lumens, the Espresso Series fit a wide range of applications, from offices and retail spaces to hospitality and residential settings. Crafted with premium materials for durability, the series combines functional lighting with aesthetic appeal, making it ideal for contemporary interiors.





# CYLINDRO & QUADRO SERIES

The Quadro and Cylindro Series feature modern pendant luminaires with opal acrylic shades, available in a range of sizes, multiple finishes, and customizable options.

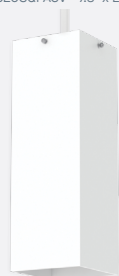
## CYLINDRO - 2700 LM

CY0608RDGV - 6" x 8"  
CY0618RDGV - 6" x 18"  
CY0820RDGV - 7.8" x 20"



## QUADRO - 2700 LM

CY0618SQFAGV - 6" x 18.5"    CLOSED BOTTOM - 1500 LM  
CY0820SQFAGV - 7.8" x 20.5"    CY0608SQCBFAGV - 6" x 8.7"



OPEN BOTTOM - 1500 LM  
CY0608SQOBFAGV - 6" x 8"



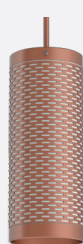
## BISTRO PENDANT - 2700 LM

AF0609GV - 6.1" x 9.2"    AF0810GV - 8.1" x 10.2"  
AF0618GV - 6.1" x 18.4"    AF0820GV - 8.1" x 20.2"  
AF0624GV - 6.1" x 24.4"



## DODGER - 2700 LM

PAC0609GV - 6" x 9"    PAC0810GV - 8" x 10"  
PAC0618GV - 6" x 18"    PAC0820GV - 8" x 20"  
PAC0624GV - 6" x 24"







## LIGHT DISCS

The Light Disc Pendants are designed with a modern, minimalist style to enhance contemporary spaces. With a variety of finishes and customizable options for mounting and dimming, it can fit into various settings. Designed for long-lasting reliability, these fixtures combine modern aesthetics with exceptional performance, making it ideal for spaces requiring both style and functionality.



Brower Park Library - Brooklyn, NY



Delta Mont-Sainte-Anne - Beaufort, QC

**24" LIGHT DISC - 4700 LM**  
LD2405LEDLX - 25" x 4.5"



**36" LIGHT DISC - 8600 LM**  
LD3605LEDLX - 36" x 4.5"







# CAFÉ SERIES

## DECORATIVE SOCKET PENDANT

### DSP CLASSIC

DSP1INC - 3" x 1.8"



### DSP ROUND TOP

DSP2INC - 3" x 1.8"



### DSP CONE

DSP3INC - 3.5" x 2.8"



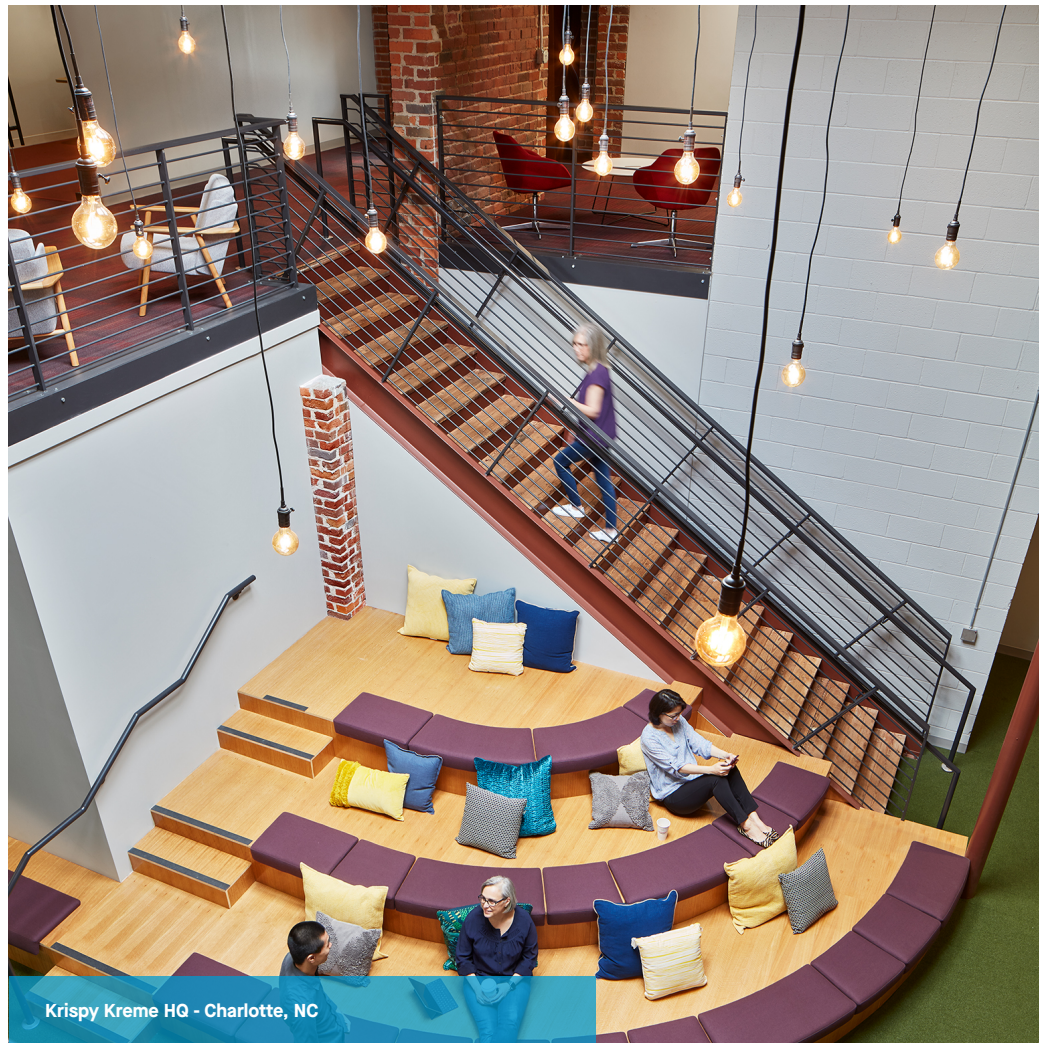
### DSP FLARE

DSP4INC - 3.6" x 2.9"



### DSP VINTAGE

DSP5INC - 2.7" x 1.3"



Krispy Kreme HQ - Charlotte, NC



Jnana Therapeutics - Boston, MA



The Café Series is a collection of luminaires that meet the needs for smaller scale decorative performance lighting. All fixtures are handcrafted in the Spectrum factory in Fall River, Massachusetts. Shades and components are hand spun from natural metals and finished to specification. The light engines are discreet LEDs with integral heatsinks that provide long term reliability. Fixtures feature a comfort view diffuser to obscure LED source and provide visual comfort. The Café Series are available with a wide range of finish colors, mounting options and braided color cords.

**POMME - 1500 LM**  
SD1208GV - 9.6" x 8.6"



**BARISTA - 1500 LM**  
ET60GV - 6.5" x 7.9"



**APRIO - 1500 LM**  
AC1007GV - 10.3" x 8.1"



**CAPPUCCINO - 1500 LM**  
BU40GV - 6.4" x 8.7"



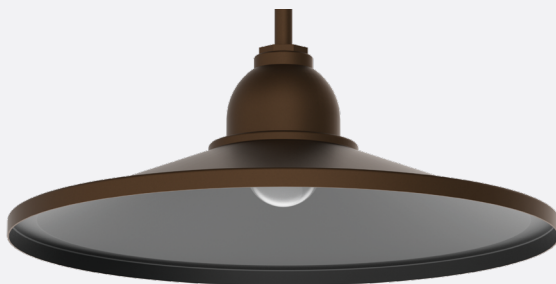
**CORTADO - 1500 LM**  
RB70GV - 6.1" x 8.1"



**CAVA - 1500 LM**  
LC50GV - 6.1" x 8.1"



**BRISTOL - 1500 LM**  
FP1906GV - 19.1" x 6.9"



**HOBOKEN PENDANT - 1300 LM**

CY0405DXT CY4 - 4" x 9"



CY0405DXT CY6 - 4" x 11"



CY0405DXT CY8 - 4" x 13"



CY0405DXT CY12 - 4" x 17"



Aprio Café





# CYLINDERS



Spectrum's Cylinder Series combines traditional architectural style with high-performance, energy-efficient illumination. Rugged designs, flexible mounting, customizable finishes and LED options help make these fixtures extremely versatile. The quick-change LED module and interchangeable optics provide job site flexibility and easy fixture upgrades.





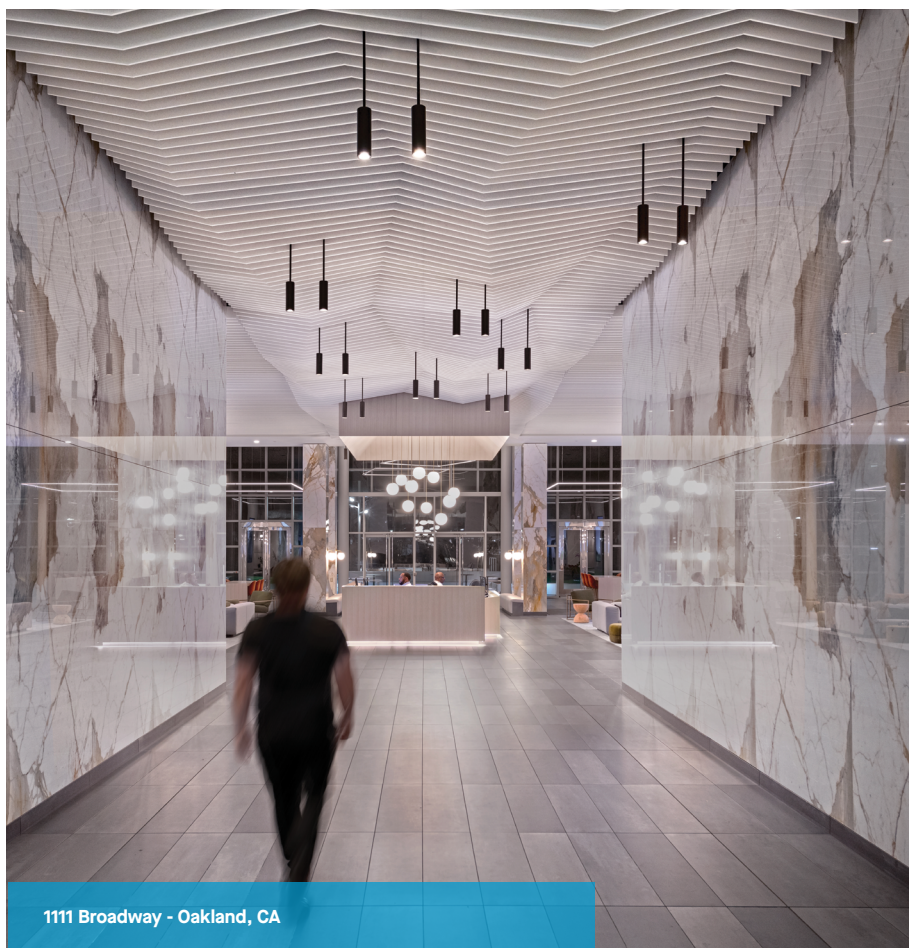
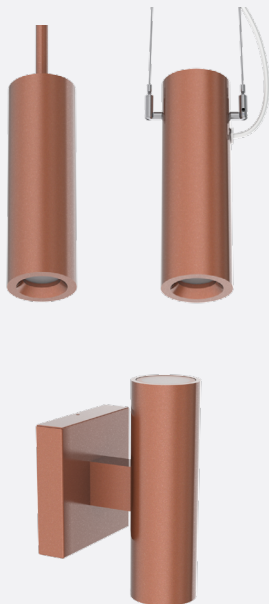
## PICO SERIES

The Pico series offers round and square cylinders designed for ceiling, wall, and pendant mounting along with providing direct, indirect, or direct-indirect illumination. Ideal for commercial and residential settings, these fixtures combine versatility, energy efficiency, and modern design.

### 3" ROUND - 1000 LM

DIRECT, DIRECT/INDIRECT, INDIRECT

C0310XT - 3.3" x 10.6"  
C0310UDXT - 3.3" x 10.6"  
C0310UXT - 3.3" x 10.6"



1111 Broadway - Oakland, CA



1111 Broadway - Oakland, CA



Betterment Office - New York, NY





## GAMMA SERIES

### 4" ROUND - 2000 LM DIRECT

CF0406PC, CW0406PC - 4.1" x 6.4"  
CF0412PC, CW0412PC - 4.1" x 12.4"  
CF0418PC, CW0418PC - 4.1" x 18.4"



### 4" ROUND - 2000 LM DIRECT

CF0406PC, CW0406PC - 4.1" x 6.4"  
CF0412PC, CW0412PC - 4.1" x 12.4"  
CF0418PC, CW0418PC - 4.1" x 18.4"



### 4" ROUND - 2000 LM DIRECT, DIRECT/INDIRECT, INDIRECT

CF0406PC, CW0406PC - 4.1" x 6.4"  
CF0412PC, CW0412PC - 4.1" x 12.4"  
CF0418PC, CW0418PC - 4.1" x 18.4"



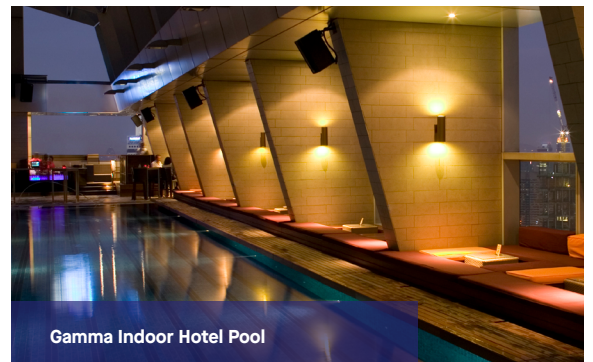
Betterment Office - New York, NY



National Instruments - Austin, TX



Gamma Outdoor Hotel Pool



Gamma Indoor Hotel Pool



Spectrum's Gamma Series combines precision craftsmanship with advanced functionality. Manufactured from extruded, die-cast, and machined aluminum, these fixtures integrate LEDs, drivers, optics, and lenses into a streamlined design. Built for easy maintenance and servicing, the series offers a range of finishes, mounting options, lumen outputs, and beam spreads to suit diverse applications. With a focus on energy efficiency and durability, Gamma fixtures are ideal for enhancing architectural, commercial and residential interiors with customizable, high-performance lighting solutions.



National Instruments - Austin, TX



Sakonnet House - Tiverton, RI



Gamma Office Entrance

**6" ROUND - 4000 LM**  
DIRECT

CF0606PC, CW0606PC - 6.1" x 6.4"  
CF0612PC, CW0612PC - 6.1" x 12.4"  
CF0618PC, CW0618PC - 6.1" x 18.4"



**6" ROUND - 4000 LM**  
DIRECT

CF0606PC, CW0606PC - 6.1" x 6.4"  
CF0612PC, CW0612PC - 6.1" x 12.4"  
CF0618PC, CW0618PC - 6.1" x 18.4"



**6" ROUND - 4000 LM**  
DIRECT

CF0606PC, CW0606PC - 6.1" x 6.4"  
CF0612PC, CW0612PC - 6.1" x 12.4"  
CF0618PC, CW0618PC - 6.1" x 18.4"







## CR2 SERIES

Machined from billet aluminum in our factory, the CR2 series is executed within fine manufacturing tolerances to insure the fit and finish of all components, resulting in the luminaire's extremely clean appearance. Our ultra-slim mounting systems and tool-free canopy, with no visible hardware carry the minimalist details to the ceiling. Nothing but clean edges and smooth beam patterns.



CR2 Dining Room



CR2 Patio Entrance



First United Bank - Fredricksburg, TX

2" ROUND  
DIRECT - 2338 LM  
CR2 - 2.5" x 8"





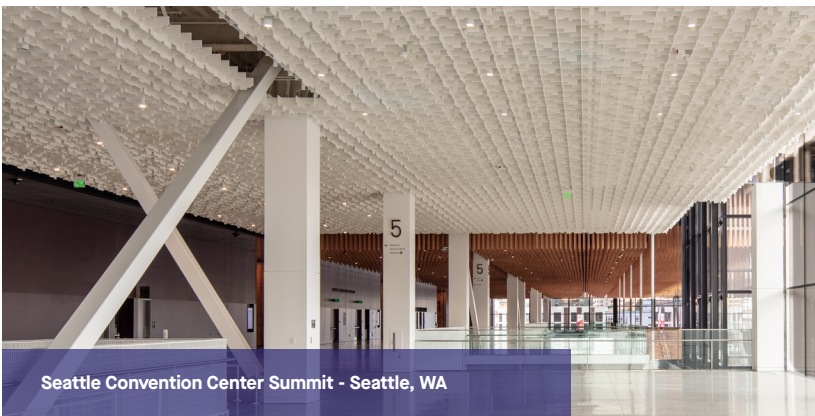


## PRO-FORM SERIES

The Pro-Form series features high-performance, energy-efficient cylinder luminaires in a variety of sizes. With high lumen outputs they offer superior flexibility. These fixtures blend classic design with modern efficiency, making them ideal for commercial and architectural lighting.



First United Bank - Fredricksburg, TX



Seattle Convention Center Summit - Seattle, WA



Draper Recreation Center - Draper, UT

**4" ROUND  
DIRECT - 4000 LM**  
C0412XT - 4" x 12.3"



**6" ROUND  
DIRECT - 5000 LM**  
C0612BX - 6.2" x 12.1"







## GENERAL ILLUMINATION SERIES

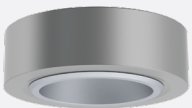


Amica Mutual Pavilion - Providence , RI



Great Lakes Academy - Chicago, IL

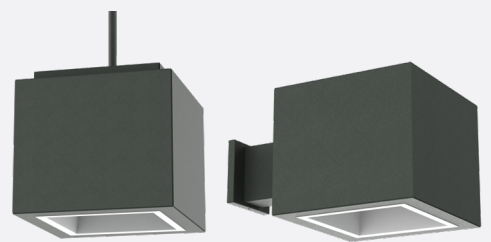
**12" ROUND  
DIRECT - 3700 LM**  
C1203GV - 11.7" x 3.6"



**12" ROUND  
DIRECT - 5500 LM**  
C1210GV - 11.4" x 11.9"



**12" SQUARE  
DIRECT - 5500 LM**  
C1210SGGV - 12" x 11"



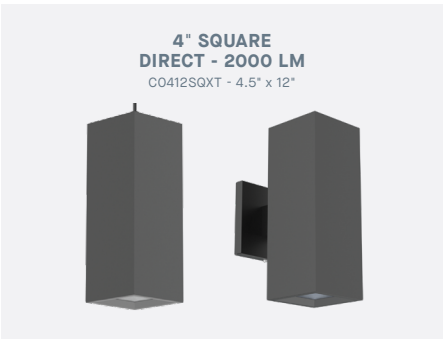




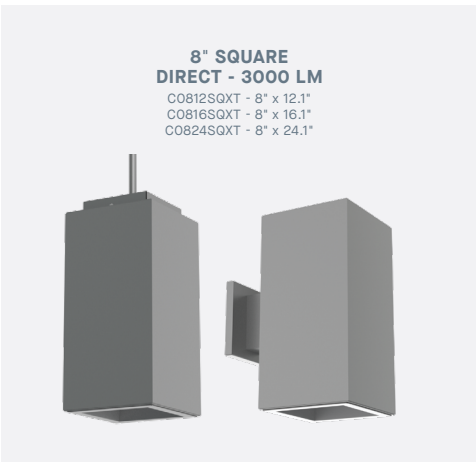
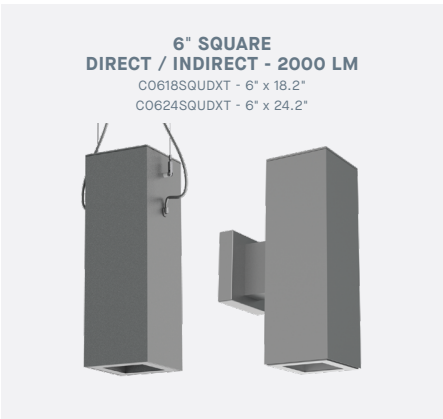
# FOCUSED ILLUMINATION SERIES



Health Catalyst - Cottonwood Heights, UT



ProtaGene - Burlington, MA







# RLM CLASSICS



Spectrum Lighting's RLM Classics Series are inspired by vintage electric lighting fixture designs, recrafted using modern materials and incorporating the latest in LED technology. These fixtures are spun by hand in our Massachusetts factory from high grade aluminum and completed with a durable powder coat finish.





## SUBWAY & SCHOOLHOUSE SERIES

The Subway Series offers customizable, durable fixtures with integral LEDs and a modern design, ideal for diverse applications. The Schoolhouse Series blends classic designs with modern LED technology, offering customizable, energy-efficient fixtures for traditional and transitional spaces.



### SCHOOLHOUSE SHADE - 14000 LM

SS12 - 12" x 6"  
SS14 - 14" x 6.8"  
SS16 - 16" x 8.5"  
SS18 - 18" x 8.8"



### WALLSTON - 2700 LM

SJ1GV - 5.5" x 11.2"  
PJ1GV - 4.8" x 9.2"



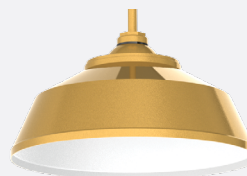
### QUINCY SERIES - 2700 LM

NL1008GV - 8.1" x 10.6"  
NL1010GV - 10.3" x 10.6"  
NL1012GV - 12.5" x 10.6"



### BOYLSTON - 2700 LM

SB1016GV - 16.2" x 8.5"



### COPLEY SERIES - 2700 LM

SB1014GV - 14.5" x 9.9"





# TIERS & PIER LIGHTS SERIES



Pier Light Restaurant Dining Room



Hildreth Elementary School - Harvard, MA



Hildreth Elementary School - Harvard, MA



These tiered fixtures have a timeless look with a distinct maritime influence. Made in our factory from hand spun aluminum these fixtures feature integral best in class LED light engines and are designed to last a lifetime. These fixtures can be wall or ceiling mounted. Available with damp or wet location ratings. Each fixture includes a soft etched glass diffuser to prevent glare, add visual interest and protect the LED light engine. Choose from a variety of shapes, sizes and powder coat paint finishes to make your perfect light fixture.

#### TECH TIER - 2700 LM

TT1610GV - 7.5" x 10.7"  
TT1010GV - 10.3" x 10.7"  
TT0510GV - 16.5" x 10.7"



#### TECH ACRYLIC - 2700 LM

TA1610GV - 7.5" x 10.7"  
TA1010GV - 10.3" x 10.7"  
TA0510GV - 16.5" x 10.7"



#### PIER LIGHT - 4500 LM

PL1411GV - 14" x 11.7"  
PL1613GV - 16" x 11.7"  
PL2015GV - 20" x 11.7"



#### PIER LIGHT SHORT - 4500 LM

PS1408GV - 14" x 10.6"  
PS1609GV - 15.8" x 10.6"  
PS2011GV - 20" x 10.6"



#### PIER LIGHT SHORT STRAIGHT - 4500 LM

PSN1408GV - 14" x 9.6"  
PSN1609GV - 15.8" x 9.6"  
PSN2011GV - 20" x 9.6"



#### PIER LIGHT - 1500 LM

MPL1209GV - 8.8" x 8.1"



#### MINI CONCORDIA - 1500 LM

CN1308GV - 13" x 7.8"



#### CONCORDIA - 4500 LM

CN1812GV - 18" x 13"

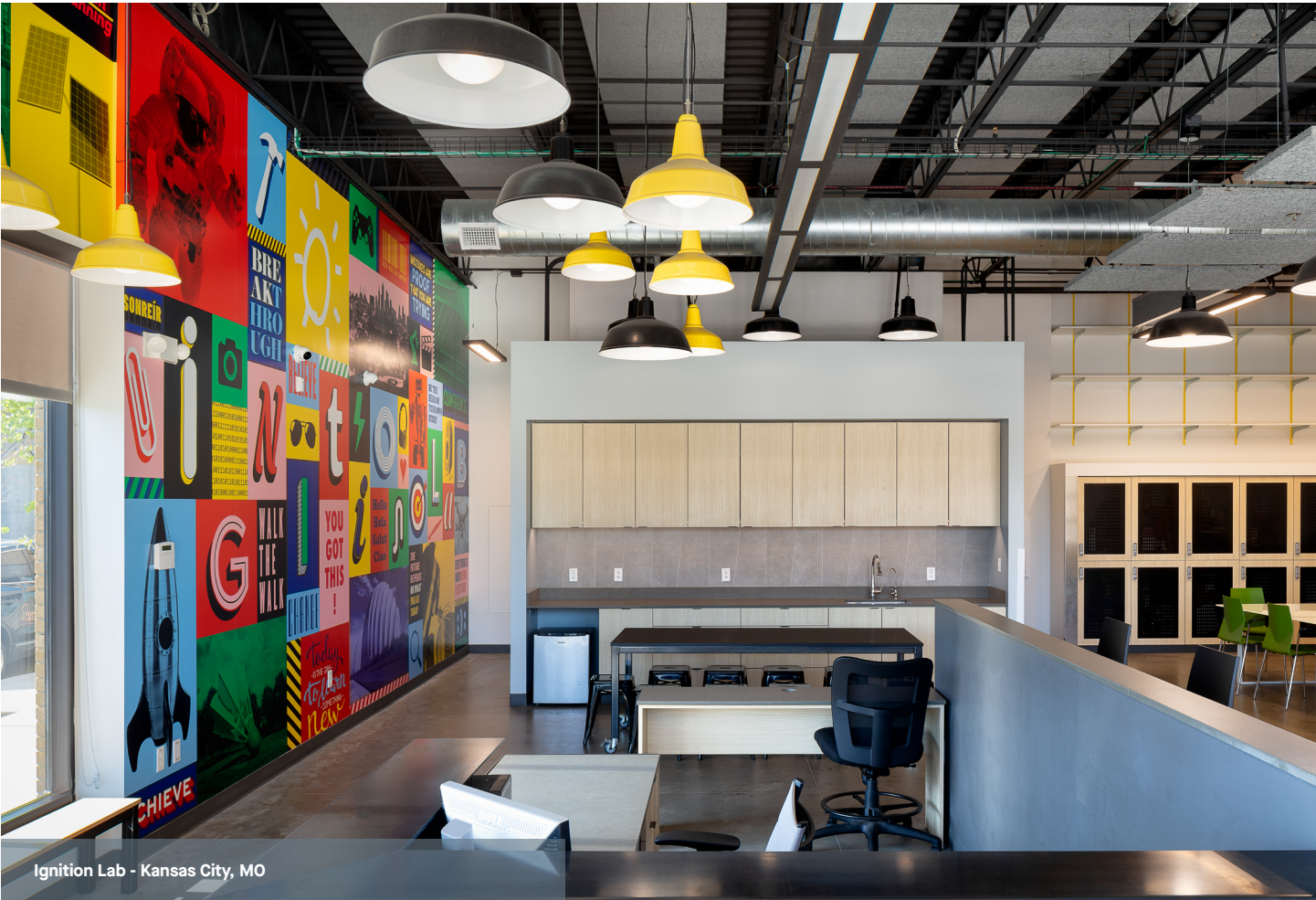








Our Classic Shapes Series celebrates the timeless elegance of vintage electric lighting, reimagined for modern spaces. These fixtures draw inspiration from early 20th-century industrial and farmhouse designs, featuring clean lines, bold forms, and authentic charm. Handcrafted in Massachusetts from high-grade aluminum using traditional spun-metal techniques, they combine heritage craftsmanship with cutting-edge LED technology. Finished in durable powder coat paint, Classic Shapes fixtures deliver a seamless blend of nostalgic style and modern performance, perfect for creating inviting, versatile lighting in both traditional and contemporary settings.



Ignition Lab - Kansas City, MO

**SHORT WAREHOUSE SHADE - 5500 LM**

SW1509GV - 14.5" x 9"  
SW1910GV - 18.5" x 10"



**WAREHOUSE SHADE - 5500 LM**

WS1210GV - 12.5" x 9.87"  
WS1410GV - 14.5" x 11.68"  
WS1611GV - 16.5" x 12.18"  
WS1812GV - 18.5" x 12.68"  
WS2015GV - 20.0" x 13.19"



**GIANT WAREHOUSE SHADE - 5500 LM**

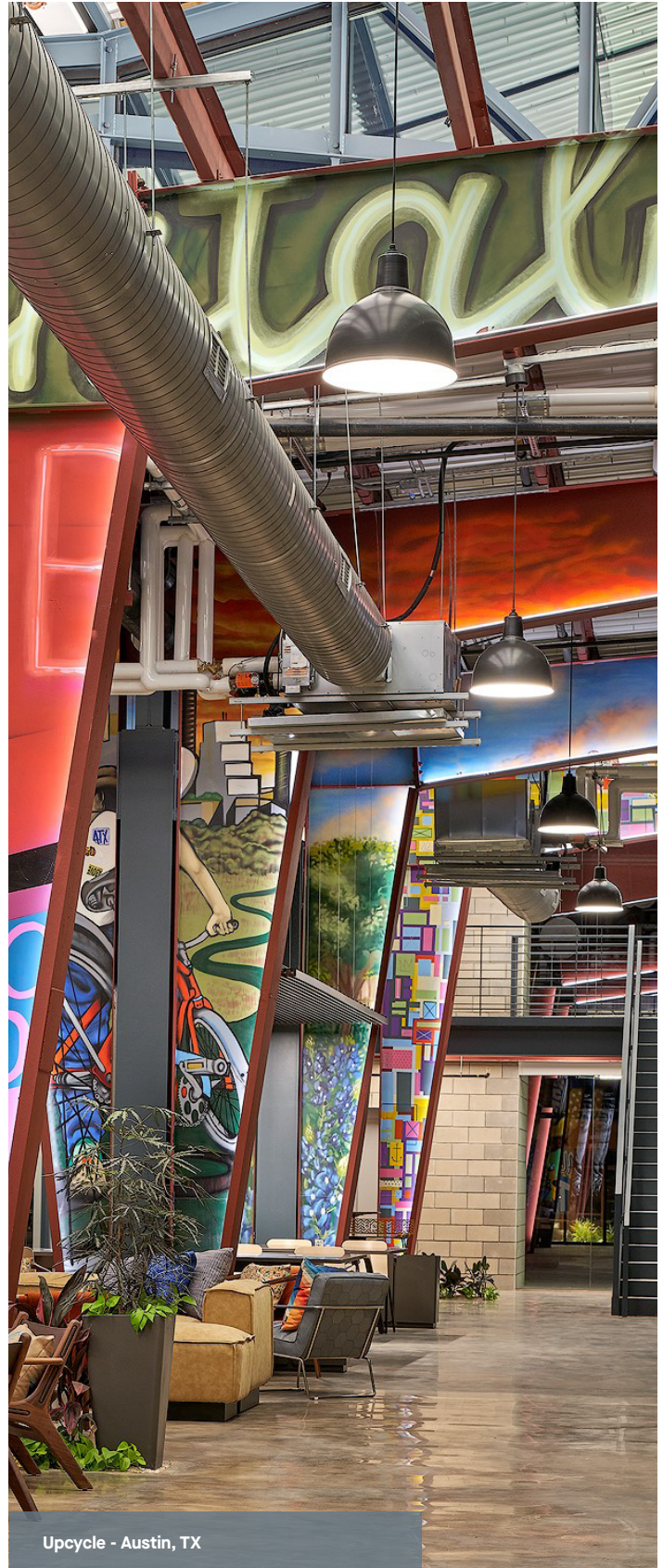
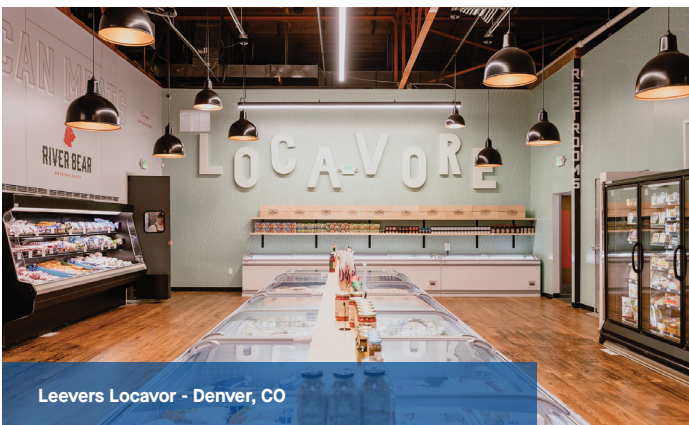
WS2414GV - 24.1" x 14.1"  
WS3617GV - 36.0" x 17.1"







## CLASSIC SHAPES SERIES







## DEEP BOWL - 5500 LM

DB1009GV - 10.6" x 9.8"  
DB1211GV - 12.5" x 12.7"  
DB1413GV - 14.5" x 14.7"  
DB1615GV - 16.8" x 16.7"  
DB1817GV - 18.5" x 18.7"



## ZEVA - 1500 LM

ZV1206GV - 12" x 6.3"



## EMBLEM SIGN - 2700 LM

EB0709GV - 7.1" x 9.7"  
EB0910GV - 8.8" x 9.8"  
EB1214GV - 12.4" x 12.1"



## ANGLED REFLECTOR - 2700 LM

AR0808GV - 8" x 9"  
AR1012GV - 10.3" x 11.3"  
AR1214GV - 12" x 13.8"

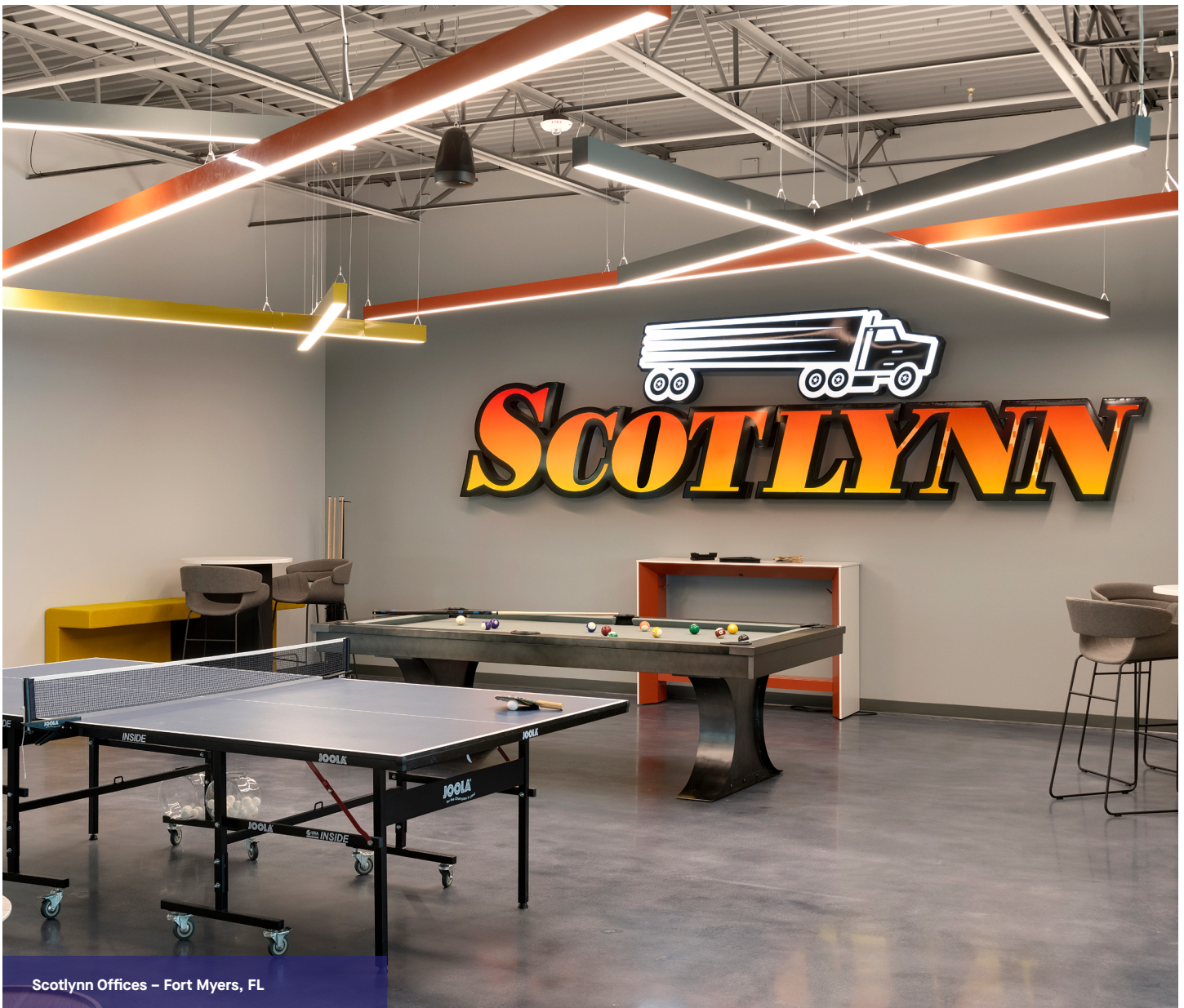


## OPEN REFLECTOR - 4500 LM

OR1514GV - 14.5" x 14.8"  
OR1917GV - 18.7" x 17.7"







# SPECLINE LINEAR

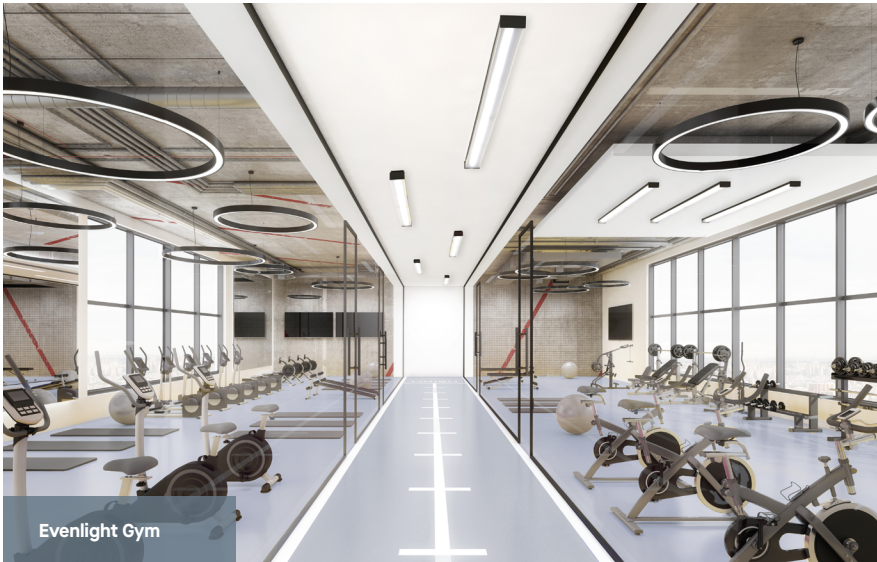


Our Specline linear products deliver versatile, high-performance LED solutions that are ideal for modern architectural and commercial applications. These fixtures feature sleek designs with options for recessed, suspended, and surface mounting, accommodating a wide range of environments such as offices, retail, and educational spaces. With customizable lengths, finishes, and color temperatures, the Specline collection offers tailored solutions to meet specific aesthetic and functional lighting needs. Engineered for energy efficiency and durability, they comply with Buy American Act standards, ensuring quality and sustainability.

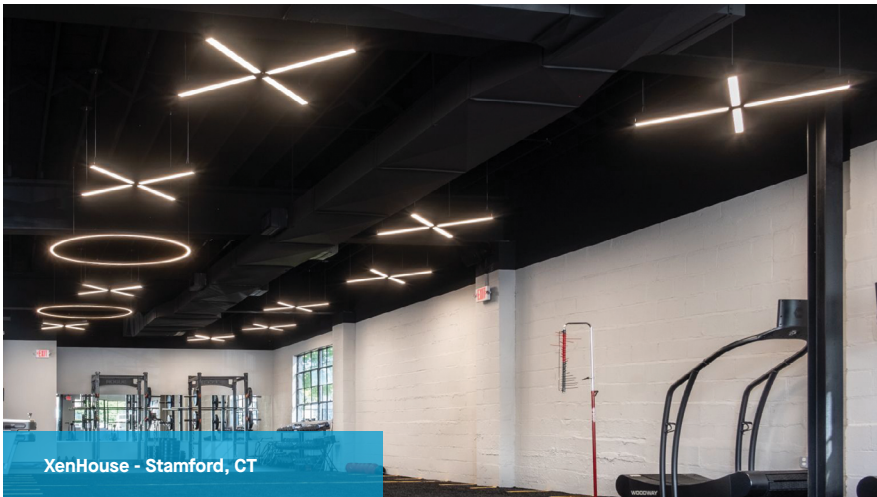




# LINEAR SERIES



Evenlight Gym



XenHouse - Stamford, CT



Zola HQ - New York, NY

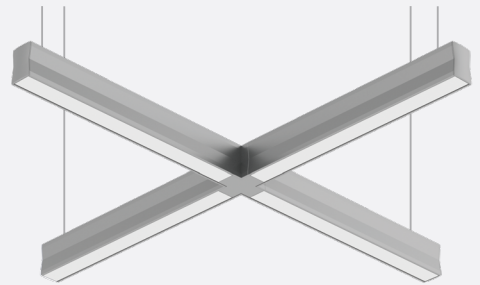
## EVENLIGHT SEMI-DIRECT - 2000 LM

EVO4IND240L - 24" x 3.8"  
EVO4IND480L - 48" x 3.8"



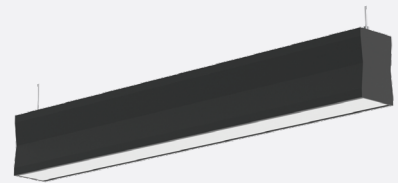
## X-TREME PENDANT - 20000 LM

SL03x480L - 52.4" x 3.3"



## SPECLINE PENDANT - 2500 LM

SL03IND240L - 24.4" x 3.3"  
SL03IND480L - 48.4" x 3.3"  
SL03IND960L - 96.4" x 3.3"



DW - Diffuse White



LW - Wide Beam Symmetric



LA - Asymmetric





# LUMEN MAX HIGH BAYS



The Lumen Max High Bay series from Spectrum Lighting combines high-performance illumination with stylish decorative features, making it a standout choice for large indoor spaces. Perfect for warehouses, manufacturing facilities, gymnasiums, and retail environments, these fixtures deliver optimal brightness with a touch of design sophistication. Engineered for efficiency and durability, they feature customizable options, advanced energy-saving technology, and aesthetic enhancements that elevate the look of any space while ensuring cost-effective, long-lasting, and reliable lighting solutions.



**COMFORT VIEW SERIES  
ALUMINUM & PRISMATIC - 5500 LM**  
12" DDS12GV & 16" DDS16GV



**ACORN PENDANTS - 10000 LM**

WA1212LX - 13.1" x 13.9"  
PA1212LX - 13.1" x 13.8"  
PA1415GV - 13.3" x 15.5"

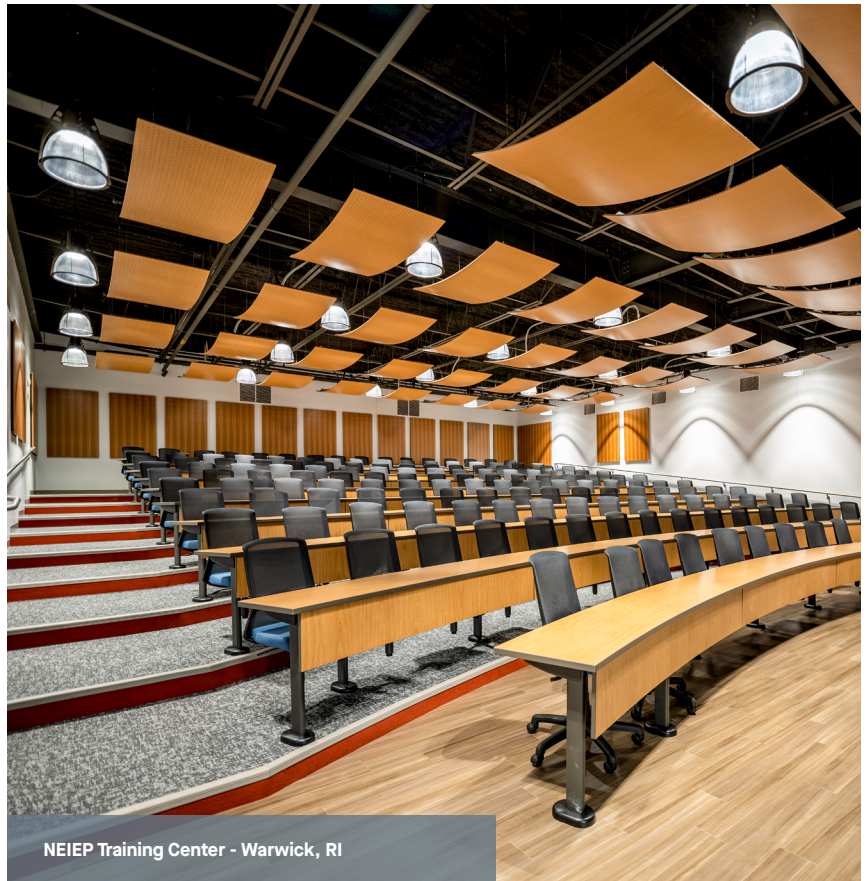


**12" ALUMINUM &  
PRISMATIC TECH - 5500 LM**  
12" ATXAL12GV, PRX12GV & 16" ATXAL16GV, PRX16GV



**16" & 22" PRISMATIC  
ARC PENDANT - 14000 LM**

PRAF16LX - 17.6" x 22"  
PRAF22LX - 24.4" x 26.5"



NEIEP Training Center - Warwick, RI



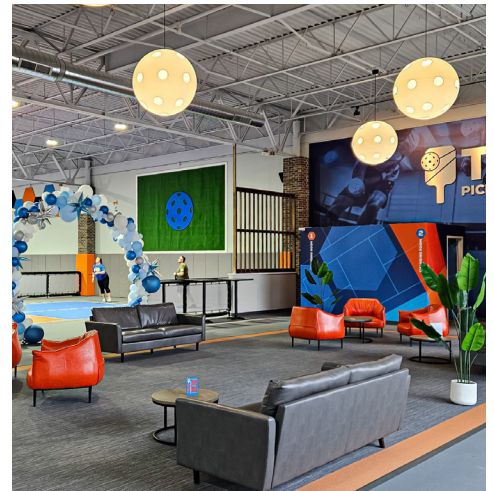
YMCA - Orlando, FL



YMCA - Orlando, FL

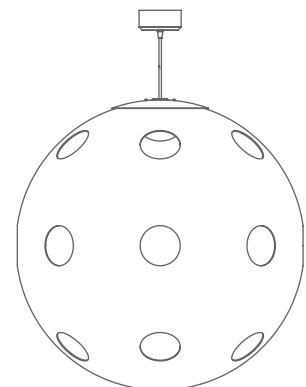


# CUSTOM DESIGNS - WHERE FORM MEETS FUNCTION



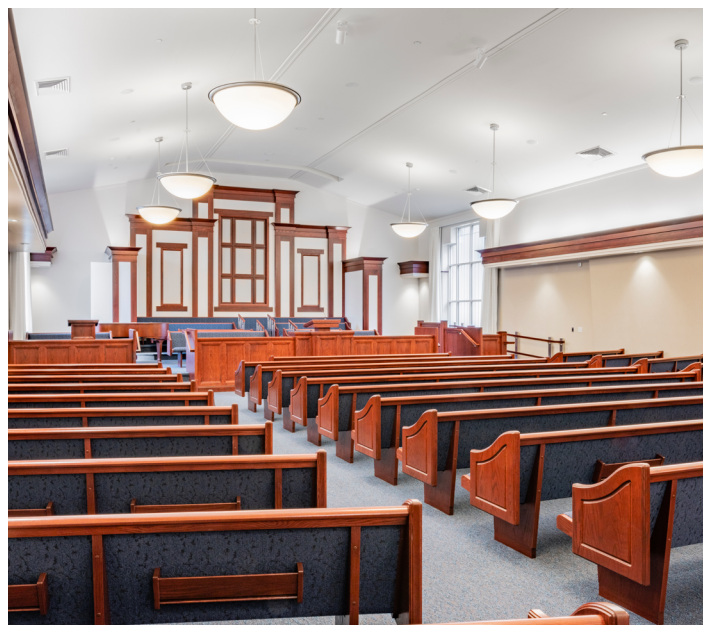
## TRUE PICKLEBALL CLUB LATHAM, NY

One of our most innovative custom designs, this 36" illuminated pickleball luminaire showcases our decorative white opal acrylic Giant Globe with a unique twist. Precision-machined in-house to create a unique perforated design, the fixture delivers 5,500 lumens at 3500K, enhanced by a specially designed internal diffuser that creates a "light within a light" effect. Acting as the sole light source for the space, this fixture eliminates the need for additional luminaires.



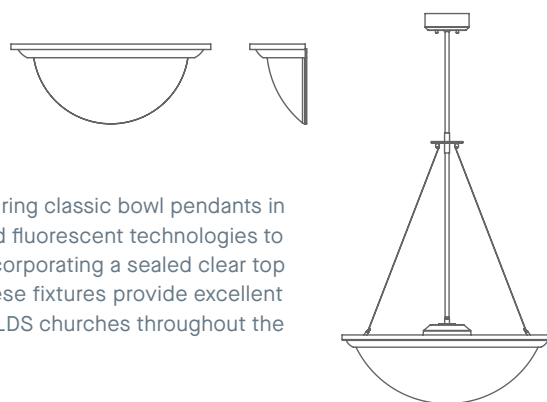


Over the last 30 years Spectrum has created many custom architectural luminaires. We possess the capacity and experience to give form to your unique vision by creating custom lighting fixtures that capture your individual requirements. Our commitment to pushing boundaries and integrating new technologies enriches our offering to go beyond ordinary architectural and decorative lighting. Contact [quotes@speclight.com](mailto:quotes@speclight.com) with any relevant product design information and we will advise within 24 hours if it is a project/product we can manufacture.



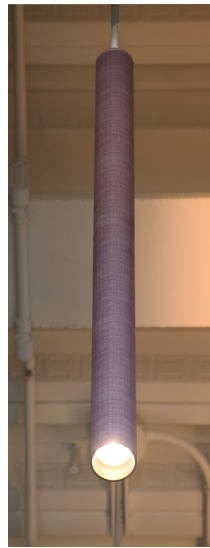
## LDS CHURCH NEWTON, MA

The Church of Latter-Day Saints approached us to create a timeless lighting solution featuring classic bowl pendants in two sizes, complemented by matching wall sconces. Transitioning from incandescent and fluorescent technologies to LED, the designs utilized direct and indirect illumination, eliminating LED imaging, and incorporating a sealed clear top lens to prevent debris from collecting inside of the bowl. Finished in antique bronze, these fixtures provide excellent illumination, dimming to 1%, require minimal maintenance, and are now installed in many LDS churches throughout the country, offering an enduring blend of functionality and aesthetic appeal.



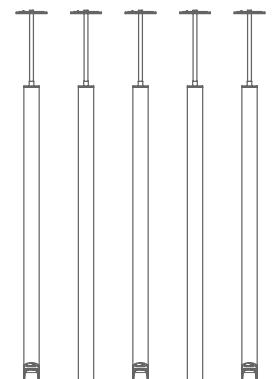


# CUSTOM DESIGNS



## PARCEL 12 BOSTON, MA

The Parcel 12 Project in Boston required a custom lighting fixture that blended functionality with sculptural design to complement the space's dramatic triple-height ceiling. The design featured 36" machined cylinders, some illuminated and others blank, finished with a custom wood grain sublimation to match the atrium's wood paneling. Vertically installed millwork slats accentuated the ceiling's height while adding balance and structure, presenting the challenge of harmonizing the raw, unfinished ceiling with the wall design. The resulting fixtures, less than half of which were illuminated, provided precise beam control and optimal light output, ensuring a cohesive and visually striking interior.



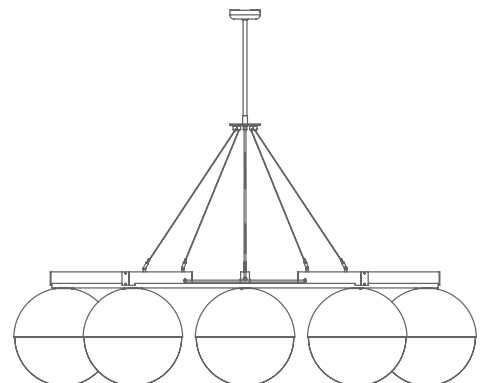


# CUSTOM DESIGNS



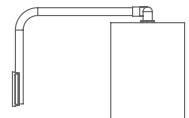
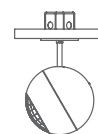
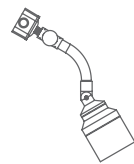
## WATERTOWN EXPLORATORY LABS (WELL) WATERTOWN, MA

Watertown Exploratory Labs (WELL) has undergone a transformative redevelopment, featuring extensive building and sitewide upgrades to create a state-of-the-art campus environment. As part of this enhancement, Spectrum provided custom-designed large-scale fabricated rings, incorporating E-base LED lamps and LED integral illumination. Precision-engineered in collaboration with the architect and builder, these fixtures were mounted to seamlessly integrate into specialized coves and expansive open areas, elevating both functionality and aesthetics.





# CUSTOM DESIGNS



## TWA HOTEL AT JFK NEW YORK, NY

The former TWA Flight Center was originally designed by Eero Saarinen and completed in the 1960s. Today, it has been transformed into a first-class retro hotel, the only on-site hotel at JFK Airport. Spectrum was given the opportunity of recreating the 1962 vintage eyeball, cylinder, and spotlight fixtures, updated with modern functions and longer lifespans. These lights were made to fit in the exact places as the original 1960s fixtures, which have been lost or sat idle during the years of the center's disuse. These fixtures match the original lumens and beam patterns of a 500 W PAR56 lamp with a modernized 5000 Lumen LED system with Xicato light sources and special optics.

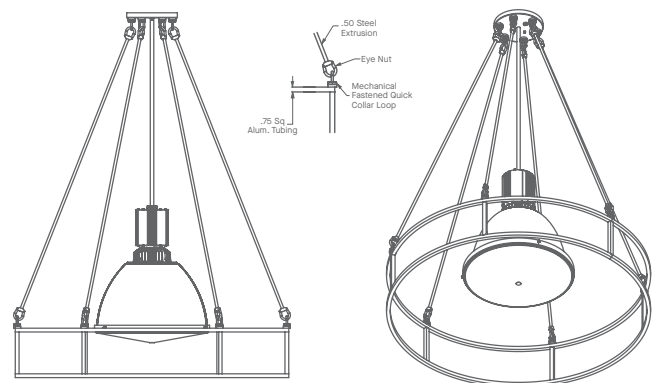


# CUSTOM DESIGNS



## UBER TALENT HUB CHICAGO, IL

Designed by Gensler, the space seamlessly integrates 25 distinct work 'neighborhoods' with meeting rooms, relaxation areas, and collaborative hubs. Our high-bay lighting fixtures are showcased in a striking, custom-designed ringed cage made of heavy-gauge aluminum hardware, adding an industrial yet sophisticated touch.





# COLOR OPTIONS - POWDER COAT PAINT FINISHES

At Spectrum Lighting our fixtures are finished with state of the art technology and expertise in our onsite powder coat facility. Having an onsite powder coat facility ensures we have full control over the color production process. We offer a broad range of standard colors along with the ability to offer custom colors while still ensuring the highest quality finish possible.

## Terra Colors

Terra – (noun) origin Latin for ‘earth’



Drawing from the rich hues of lush forests, tranquil oceans and vibrant meadows, Spectrum's new Terra color palette brings the calming essence of nature into spaces that impact everyday life.

## Eco Colors

Eco – (adjective) not harming the environment



Spectrum has long held sustainability as a cornerstone of our operating principles, and we wholeheartedly believe we must do everything we can to protect this one home we share. We are proud to announce our new Eco Colors collection which utilizes powder coats, produced using resins containing post-consumer recycled plastic (or rPET) to reduce carbon emissions and plastic pollution.

## Nouveau Pastel

Matte Interior Finishes

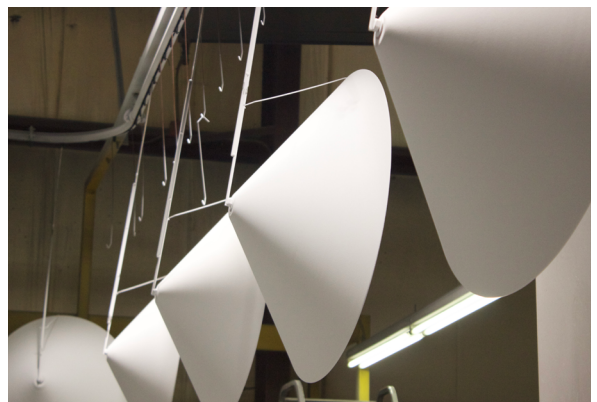


The lighting industry is full of standards, high-tech instruments, and technical jargon. Take a step back and embrace your inner artist with Spectrum Lighting's Nouveau Pastel Matte Interior Finishes. Enhance the interior color scheme to create a more pleasant atmosphere. Studies show that an improved mood can increase one's sense of well-being and overall productivity.

Rose Quartz (RQ) – This heartwarming tint calms the atmosphere and can enhance skin tones. Get ready to feel the space hugging you back! Rose quartz pairs well with 3000K and 2700K, 80 CRI and 90 CRI LEDs.

Light Almond (LA) – This delicious tint subtly warms the light and is highly reflective. Light Almond pairs well with 3500K and 3000K, 80 CRI and 90 CRI LEDs.

Hazy Blue (HB) – The slight cool shift of Hazy Blue will have a pleasing, energetic effect on you. Hazy Blue pairs well with 4000K and 3500K, 80 CRI and 90 CRI LEDs.





ALL COLORS ARE AVAILABLE FOR FINISHING THE EXTERIOR AND INTERIOR OF A FIXTURE, EXCLUDING NOUVEAU PASTEL.

NOTE: NO PRINTED IMAGE CAN EQUAL THE EXACT COLOR OF FINISH ON METAL. CONSULT FACTORY FOR ADDITIONAL INFORMATION.



PRODUCT COLOR AVAILABILITY

PRODUCT TYPE	TIER 1	TIER 2 - GLOSS	TIER 2 - ECO CLASSICS	TIER 2 - NATURALS	TIER 2 - NOUVEAU PASTELS	TIER 3
Cylinders	✓	x	✓	✓	x	x
Lumen Max Highbay & Lowbay	✓	✓	✓	✓	✓	x
Multiples	✓	x	x	x	x	x
RLM Shades	✓	✓	✓	✓	✓	✓
Speculume Decorative	✓	✓	✓	✓	✓	✓
Speculume Linear	✓	x	✓	✓	x	x
Track	✓	x	x	x	x	x
Fixture Exterior	✓	✓	✓	✓	x	✓
Fixture Interior	✓	✓	✓	✓	✓	✓

TIER 1 - STANDARD FINISHES

<b>MW</b> Matte White	<b>MB</b> Matte Black	<b>PT</b> Platinum Silver	<b>TW</b> Textured White	<b>TB</b> Textured Black	<b>MT*</b> Textured Silver	<b>BZ</b> Bronze

TIER 2 - SPECIALTY FINISHES

<b>Gloss</b>		<b>Eco Classics</b> - Eco-Conscious Powder Coat Solution Produced from 25% Post-Consumer Plastics				
<b>GW</b> Gloss White	<b>GB</b> Gloss Black	<b>RD</b> Ruby Red	<b>OR</b> Harvest Orange	<b>AY</b> Saffron Yellow	<b>EG</b> Emerald Green	<b>BL</b> Ocean Blue
<b>Naturals</b>						
<b>OB*</b> Oil Rubbed Bronze	<b>SN</b> Burnished Brass	<b>CO</b> Copper	<b>GH</b> Graphite	<b>CH</b> Charcoal	<b>BR</b> Rust	<b>VE</b> Aged Copper
<b>AK</b> Gun Metal	<b>AZ</b> Champagne Bronze	<b>AS</b> Pearl	<b>AN</b> Mist White			
<b>Terra</b>						<b>Nouveau Pastel</b> - Matte Finish, Available for Interior of Shade Only
<b>OH</b> Ochre (RAL 1024)	<b>WN</b> Woodland (RAL 6003)	<b>PI</b> Paprika (RAL 3016)	<b>SH</b> Sapphire (RAL 5003)	<b>PN</b> Pale Rose (RAL 3015)	<b>SB</b> Smooth Beige (RAL 7044)	<b>RQ</b> Rose Quartz
						<b>LA</b> Light Almond
						<b>HB</b> Hazy Blue

TIER 3 - HAND APPLIED FINISHES

<b>GA*</b> Galvanized	<b>GF*</b> Gold Flake

\*UNAVAILABLE FOR WET LOCATION

CUSTOM COLOR FINISHES Contact factory

<b>CC</b> Custom Color

MOUNTING FINISHES

FIXTURE COLOR	STANDARD CORD COLOR	STANDARD CANOPY / STEM COLOR
Matte White, Textured White	Matte White	Matte White
Gloss White	Matte White	Gloss White
Matte Black, Gloss Black, Textured Black	Matte Black	Matte Black
All Others	Matte Black	Same Color as Fixture
Custom Color	Contact Factory	Contact Factory

PAINT TIMES

TIER	COST	AVERAGE PAINT TIME*
Tier 1 - Standard Finishes	\$	⌚
Tier 2 - Specialty	\$\$	⌚⌚
Tier 3 - Hand Applied	\$\$\$	⌚⌚⌚
Custom Color	Contact Factory	Contact Factory

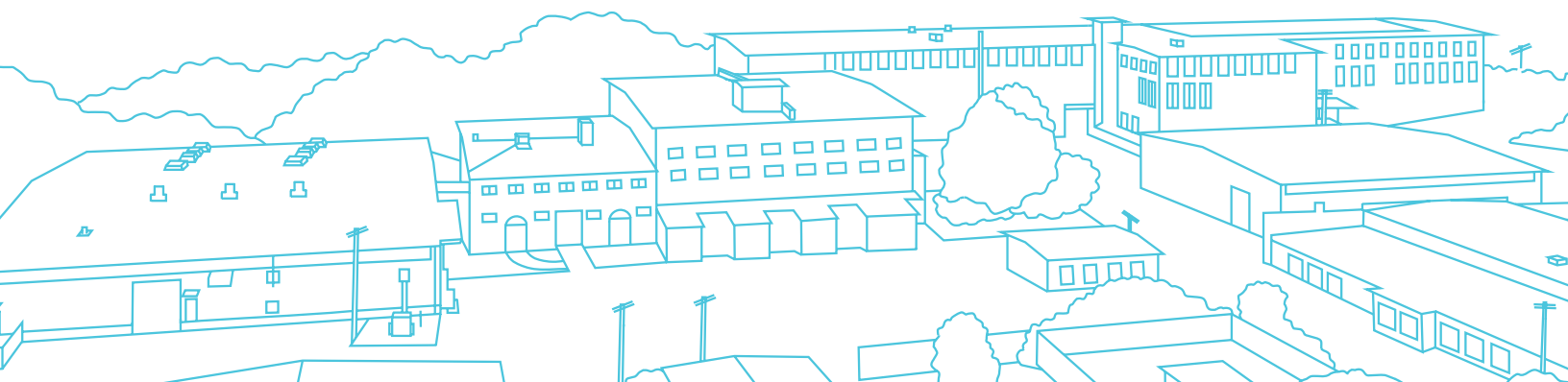
\*CONTACT FACTORY FOR SPECIFIC PRODUCT LEAD TIMES





# Spectrum Lighting

ILLUMINATING WHAT'S POSSIBLE.











# DECORATIVE LIGHTING DESIGNER GUIDE



Spectrum Lighting

[speclight.com](http://speclight.com) • [quotes@speclight.com](mailto:quotes@speclight.com) • 508.678.2303 • 994 Jefferson St. Fall River, MA 02721