

TEK TRACK

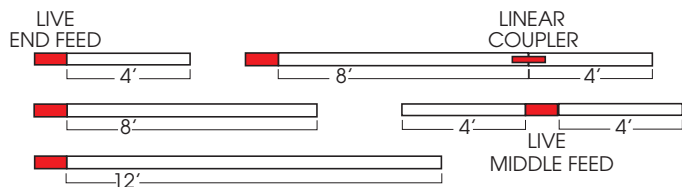
2 CIRCUIT / 2 NEUTRAL
120 VOLT

USE TEK100 ADAPTOR

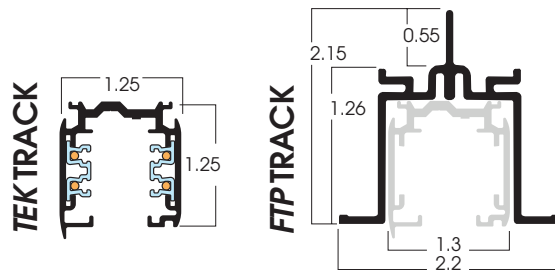
TEK
SERIES

COMPONENTS OF TEK TRACK INSTALLATION

TYPICAL TRACK INSTALLATIONS



- 2 Circuit/2 Neutral Track
- Architectural Grade.
- ISO 9002 Quality
- Integral Suspension rail.
- Copper connector/
polycarbonate components
- UL Listed.

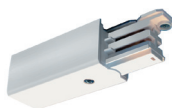


DESCRIPTION	PART #	PART #
	TRACK	RECESSED
4' TRACK	TEK44	FTP44
8' TRACK	TEK48	FTP48
12' TRACK	TEK412	FTP412

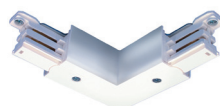
SPECIFY FINISH: Natural Aluminum (-1) Available for track lengths only; Black (-2); White (-3)

ACCESSORIES FOR TEK TRACK INSTALLATION

LIVE END
TEK11



FEEDABLE "L"
CONNECTOR
TEK34



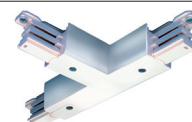
LIVE MIDDLE FEED
TEK14



DEAD END
TEK41



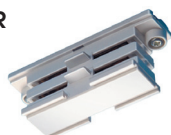
FEEDABLE "T"
CONNECTOR
RIGHT-TEK39, LEFT-TEK40



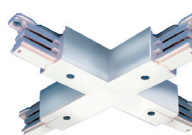
MONO POINT
1 CIRCUIT GES70
SPECIFY ADAPTOR GES66



LINEAR COUPLER
TEK21



FEEDABLE "X"
CONNECTOR
TEK38



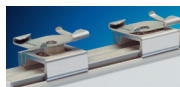
SPECIFY FINISH: Black (-2); White (-3)

MOUNTING ACCESSORIES FOR TEK TRACK

STEM KIT for GES/GET
SPUS ()
Specify Stem Length
12", 18", 24", 48"



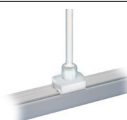
T-BAL CLIP
SKBT12



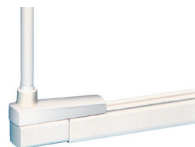
CABLE CLIP
SKB12



UNIVERSAL
SP4P



END FEED
SUSPENSION
SP4E



OTHER ACCESSORIES NOT SHOWN

DESCRIPTION	PART #
Ceiling Cup Cable	SKB30
*Cable Lengths (*5', 9')	SKB34 (*)

SPECIFY FINISH: Black (-2); White (-3)



Dimensions shown are nominal. Spectrum Lighting is continually improving products and reserves the right to make changes that will not alter performance or appearance with or without written notice.



PROJECT:

TYPE:

CAT. NO.:





Adaptor must match track-use this chart to select adaptor.
adaptor will be wired to track head.

	1 CIRCUIT	2 CIRCUIT		3 CIRCUIT	3 CIRCUIT DIMMING
	1 NEUTRAL	2 NEUTRAL		1 NEUTRAL	1 NEUTRAL
SERIES NUMBER	GES	TEK	HTEK	XTS	GNC
Voltage	120	120	277	120	120
REQUIRED ADAPTOR	GES66	TEK100	HTEK100	GA100	GA100

DIMMING

	2 CIRCUIT			3 CIRCUIT	3 CIRCUIT DIMMING
	1 NEUTRAL	2 NEUTRAL		1 NEUTRAL	1 NEUTRAL
SERIES NUMBER	GES	TEK	HTEK	XTS	GNC
Voltage	120	120	277	120	120
TRACK LENGTHS	SPECIFY FINISH: Natural Aluminum (-1) Available for track lengths only; Black (-2); White (-3)				
4' Length	GES204	TEK44 / *FTP44	HTEK44 / *FTP44	XTS44 / *FTP44	GNC44
8' Length	GES208	TEK48 / *FTP48	HTEK48 / *FTP48	XTS48 / *FTP48	GNC48
12' Length	GES212	TEK412 / *FTP412	HTEK412 / *FTP412	XTS412 / *FTP412	GNC412
ACCESSORIES	SPECIFY FINISH: Black (-2); White (-3) *FTP (Recessed Track Jacket-Order Separately if Required)				
Live End	GES11	TEK11	HTEK11	XTS11	GNC11
Live End w/ Current Limiter (SPECIFY AMPS)	GES11CL	TEK11CL	HTEK11CL	N/A	N/A
End Cap	GES41	TEK41	HTEK41	XTS41	GNC41
Linear Coupler	GES21	TEK21	HTEK21	XTS21	GNC21
Conduit End Feed	GES13	N/A	N/A	N/A	N/A
Live Middle Feed	GES14	TEK14	HTEK14	XTS14	GNC14
Feedable L	GES34	TEK34	HTEK34	XTS34	GNC34
Feedable T	GES40	TEK40	HTEK40	XTS40	GNC40
Feedable X	GES38	TEK38	HTEK38	XTS38	GNC38
Floating Feed	GES67	N/A	N/A	N/A	N/A
Conduit Continuation	GES13 & GES16	N/A	N/A	N/A	N/A
Flex Connect	GES23	N/A	N/A	N/A	N/A
Monopoint***	GES70	N/A	N/A	N/A	N/A
TRACK MOUNTING	SPECIFY FINISH: Black (-2); White (-3)				
Stem Kit	GEA37 / ()	SPUS / ()	SPUS / ()	SPUS / ()	SPUS / ()
End Feed Suspension	GEA11	SP4E	SP4E	SP4E	SP4E
Universal Feed Suspension	GEA10	SP4P	SP4P	SP4P	SP4P
L Feed Suspension	N/A	SP4L	SP4L	SP4L	SP4L
T Feed Suspension	N/A	SP4T	SP4T	SP4T	SP4T
X Feed Suspension	N/A	SP4X	SP4X	SP4X	SP4X
TBAR Clip	GEA7	SKBT12	SKBT12	SKBT12	SKBT12
Cable Clip	N/A	SKB10	SKB10	SKB10	SKB10
Threaded Rod Mounting Clip	GEA6				
Ceiling Cup for Cable Rod*	N/A	SKB30	SKB30	SKB30	SKB30
Cable Lengths*	N/A	SKB34 (*)	SKB34 (*)	SKB34 (*)	SKB34 (*)
SPECIFY FINISH: Black (-2); White (-3) / (): SPECIFY STEM LENGTH / (*): SPECIFY CABLE LENGTH, 5' OR 9'					